

AGRIBEE

“STATE PROGRAMMES AND PROCESSES: ACHIEVING A WIN-WIN RESULT”

Ilanga Estate

15 September 2009

BY

Dr TJ Masiteng



agriculture
Department of
Agriculture
FREE STATE PROVINCE

TABLE OF CONTENTS

- **INTRODUCTION**
- **LARP PURPOSE**
- **LARP FEATURES**
- **LARP: PILLARS (1-5)**
- **SMALL PRODUCTION SYSTEMS**
- **LARGE PRODUCTION SYSTEMS**
- **GOVERNMENT UNDERTAKES**
- **CONCLUSIONS**

LARP PURPOSE

- To fast track sustainable Land and Agrarian Reform
- To ensure alignment of activities between Agriculture and Land Reform
- To create a one-stop centre for service delivery

LARP FEATURES

- ❑ Focus on the Letsema/Ilema
 - ❑ Going back to the land
 - ❑ Encouraging people to work together
- Improved efficiency of production
- Expansion of production areas
- Increased livestock numbers and crop yields
- Use of high yielding varieties (crops); breeds (animals) of superior qualities
- Increased access to production inputs

LARP: PILLARS (1-5)

- **Land Reform**
- **Increase black entrepreneurs by 10%**
- **Universal access to support**
- **Increase agricultural production by 10-15%**
- **Increase agricultural trade by 10-15%**

SMALL PRODUCTION SYSTEMS

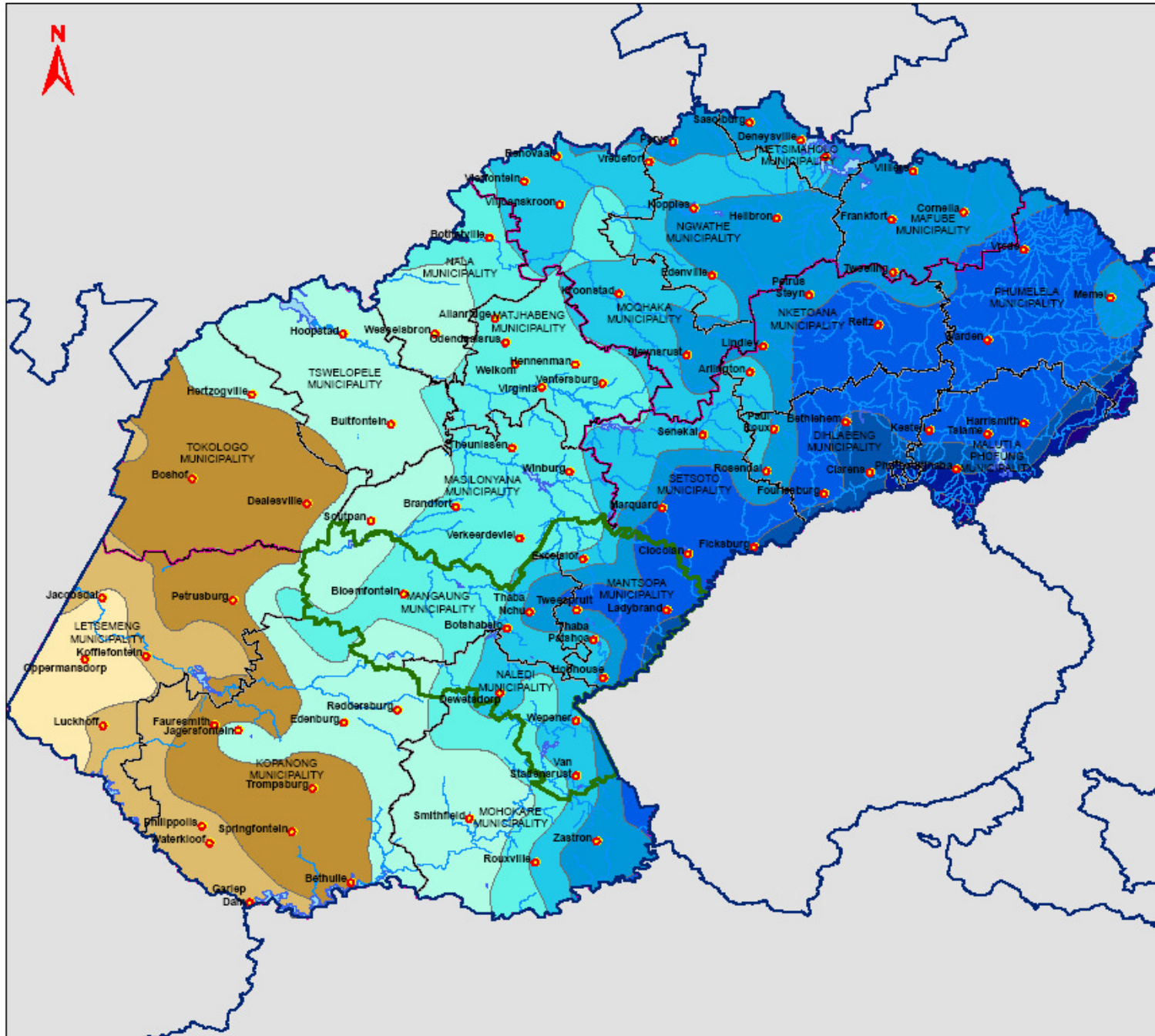
- Livestock production
 - Small holder milk production systems
 - Improve on quality of livestock
- Crop production
 - Vegetables , grains (wheat and maize)
 - Other cash crops

LARGE PRODUCTION SYSTEMS

- ❑ Infrastructure development with special focus on:
 - ❑ Rehabilitation of irrigation schemes
 - ❑ Identified projects
 - ❑ Oppermans, Tikwe irrigation infrastructure
 - livestock and vegetable gardens
- ❑ Mechanisation
 - ❑ Encouraging entrepreneurship for people who can hire out tractors – Tractor recapitalisation programme
 - ❑ Ensure that local communities have capacity to service tractors

GOVERNMENT UNDERTAKES:

- ❖ Ensure the creation of an enabling environment to support agriculture;
- ❖ Continue with, and further develop, the implementation of the Comprehensive Agricultural Support Programme ('CASP') and other government programmes;
- ❖ Implement MAFISA (Micro-Agricultural Financial Institutions of South Africa) and other government financing facilities to further enterprise development; and
- ❖ Establish Public-Private Partnerships to improve service delivery.



PROJECT

FREE STATE AGRICULTURAL SECTOR FRAMEWORK

PLAN DESCRIPTION


AVERAGE ANNUAL RAINFALL

LEGEND

- FREE STATE BORDER
- MOTHEO DISTRICT MUNICIPALITY
- DISTRICT MUNICIPALITIES
- LOCAL MUNICIPALITIES
- RIVERS
- DAMS

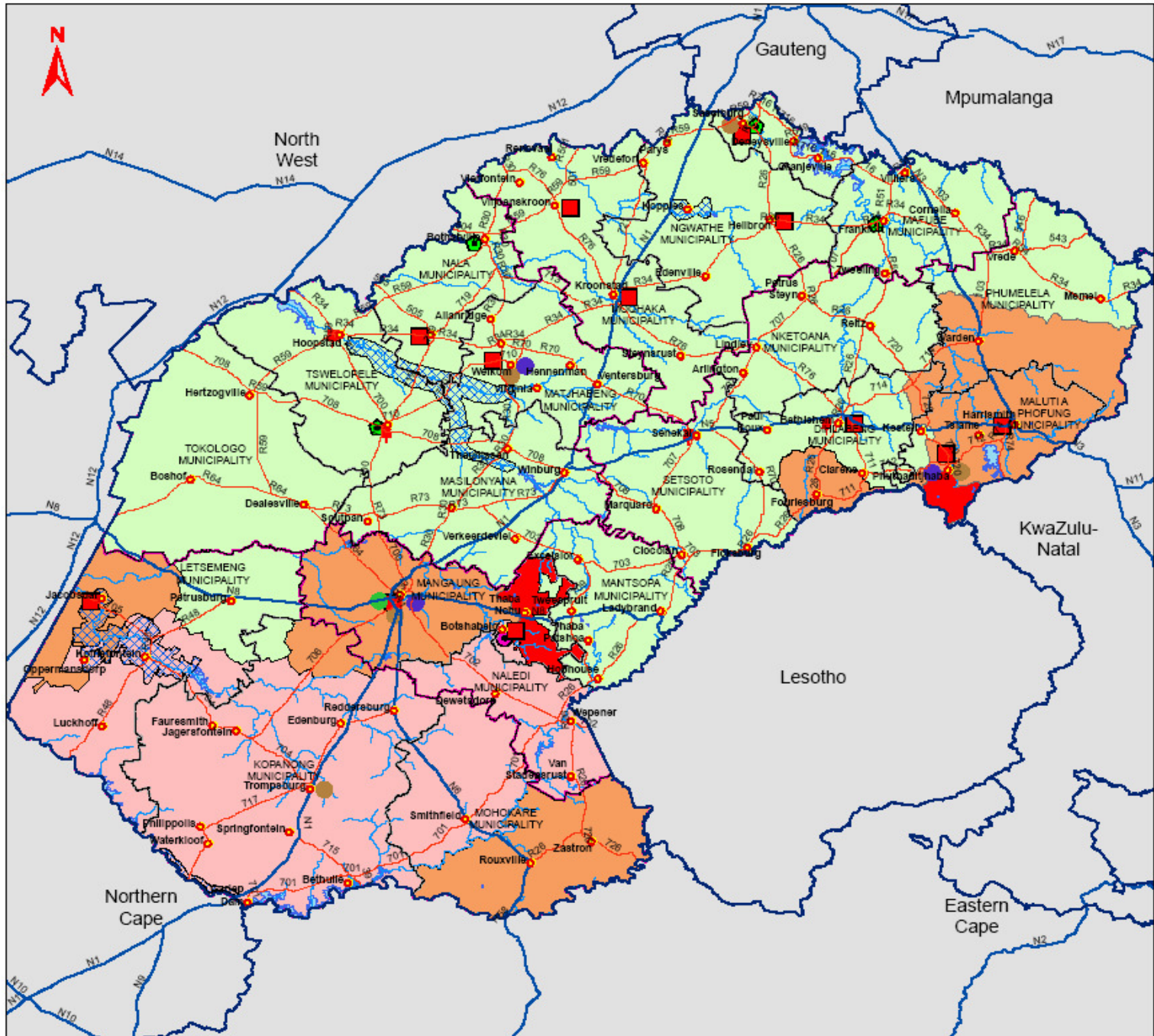
AVERAGE ANNUAL RAINFALL

- 301 - 350
- 351 - 400
- 401 - 450
- 451 - 500
- 501 - 550
- 551 - 600
- 601 - 650
- 651 - 700
- 701 - 750
- 751 - 800
- 801 - 850
- 851 - 900

 DEPARTMENT OF AGRICULTURE	DESIGN: S.H.
	DRAWN: S.W.
	APPROVED: S.H.
	COPYRIGHT: DAT
SCALE: 1:2,000,000	JAB
DRAWING NO: 0134B	




66 C.P. HOOGENHOUT & MATE
 LANGENHOVENPARK, BLOEMFONTEIN
 P.O. BOX 37922
 LANGENHOVENPARK, 9330
 TEL: 051 446 0532/0461
 FAX: 051 446 0530
 E-mail: urban@udk.co.za



PROJECT


FREE STATE AGRICULTURAL SECTOR FRAMEWORK

PLAN DESCRIPTION

CURRENT REALITY **2**


- LEGEND**
- FREE STATE BORDER
 - DISTRICT MUNICIPALITIES
 - LOCAL MUNICIPALITIES
 - TOWNS
 - NATIONAL ROADS
 - PRIMARY ROADS
 - river1
 - DAMS
 - ▨ IRRIGATION SCHEME
- AGRICULTURAL REGION**
- CATTLE
 - GRAINS
 - SHEEP
 - SUBSISTANCE
- CENTRES**
- ADMINISTRATIVE CENTRE
 - EDUCATION CENTRE
 - LEGISLATIVE CENTRE
- NODES**
- AGRICULTURE NODE
 - BIO- FUEL NODE
 - IDZ NODE
 - MANUFACTURING NODE

CLIENT



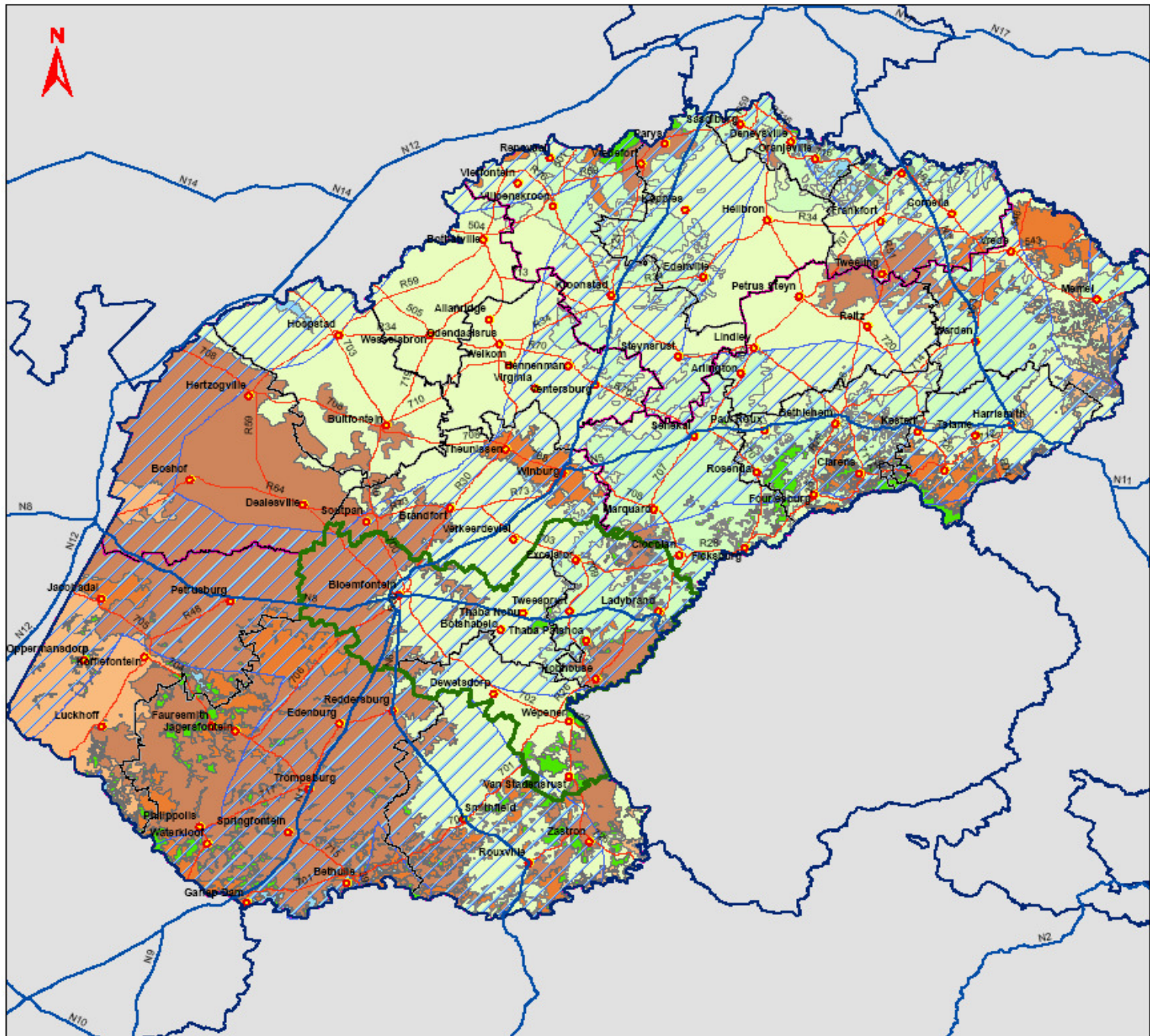
DEPARTMENT OF AGRICULTURE

DESIGN:	S.H. DE BRUYN
DRAWN:	S.W. SLABBERT
APPROVED:	S.H. DE BRUYN
COPYRIGHT RESERVED	
SCALE:	DATE:
1:2,000,000	JANUARY 2008
DRAWING NO:	
0134B/2/1	




URBAN DYNAMICS
TOWN & REGIONAL PLANNERS

95 C.P. HOOGENHOUT & MATERHA MAARTENS
LANGENHOVENPARK, BLOEMFONTEIN
P.O. BOX 37522
LANGENHOVENPARK, 9330
TEL: 051 445 0520/451
FAX: 051 445 0590
E-mail: urban@ud.co.za



PROJECT

FREE STATE AGRICULTURAL SECTOR FRAMEWORK

PLAN DESCRIPTION

AGRICULTURAL POTENTIAL **3**


LEGEND

- FREE STATE BORDER
- MOTHEO DISTRICT MUNICIPALITY
- DISTRICT MUNICIPALITIES
- LOCAL MUNICIPALITIES
- PRIMARY ROADS

AGRICULTURAL POTENTIAL

- High potential arable land
- Marginal potential arable land
- Moderate potential arable land
- Non-arable; low potential grazing land
- Non-arable; low to moderate potential grazing land
- Non-arable; moderate potential grazing land
- Wilderness
- Water
- AGRICULTURAL DEVELOPMENT CORRIDOR

CLIENT



DEPARTMENT OF AGRICULTURE

DESIGN:	S.H. DE BRUYN
DRAWN:	S.W. SLABBERT
APPROVED:	S.H. DE BRUYN
COPYRIGHT RESERVED	
SCALE:	DATE:
1:2,000,000	JANUARY 2008
DRAWING NO:	
0134B/3/1	

0 10 20 30 40 50 60 70 80 90 100

KILOMETRES



URBAN DYNAMICS
TOWN & REGIONAL PLANNERS

66 C.P. HOOGENHOUT & MATERHA MAARTENS
LANGENHOVENPARK, BLOEMFONTEIN
P.O. BOX 37522
LANGENHOVENPARK, 9330
TEL: 051 448 0520/451
FAX: 051 448 0590
E-mail: urban@uol.co.za

INCREASE BLACK ENTREPRENEURS BY 10%

- ❑ Promote the creation of functional co-operatives Promote the development of Agro-processing areas nearer to primary production areas.
- ❑ Promote value addition of food
- ❑ Promote post harvest storage and preservation of food
- ❑ This initiative will be done in partnership with the Dti , private sector, ARC other institutions

INCREASE AGRICULTURAL TRADE BY 10-15%

- ❑ Promote access to markets
 - Sustain existing markets
 - Open new markets
- ❑ Review legislation which hampers access to markets
 - Quality control services which are focusing on exports only need to be broadened to include imports (Most of imports of agricultural products go for manufacturing).
- ❑ Increase the credibility of the South African Certification systems
 - Harmonize activities for certification – focus also on SADC
 - Establish a traceability system for both animal and plant products

CONCLUSIONS

- The recent increase in food prices requires a considered response.
 - The negative impact of climate change on food production in many areas.
 - Impacts on food supply and demand, commodity prices.
-
- The diversity & uniqueness of sub-sectors within the agricultural sector.**
 - Commitment by all stakeholders.**
 - Establishment of a vibrant and successful agricultural industry.**
 - Promote AgriBEE in the entire value chain of the agribusiness industry.**
 - Support Equity schemes & beneficiaries.**
 - Support new entrepreneurs.**
 - Support, advice and establish Agricultural cooperatives.**
 - Promote sustainable management and use of natural resources.**

“OPERATION HLA SELA”

KE YA LEBOHA!

DANKIE!

THANK YOU!

ENKOSI!

HA KHENSA!

RE A LEBOGA!

RO LIVHUWA!

SIYABONGA!

SIYATHOKOZA!

