



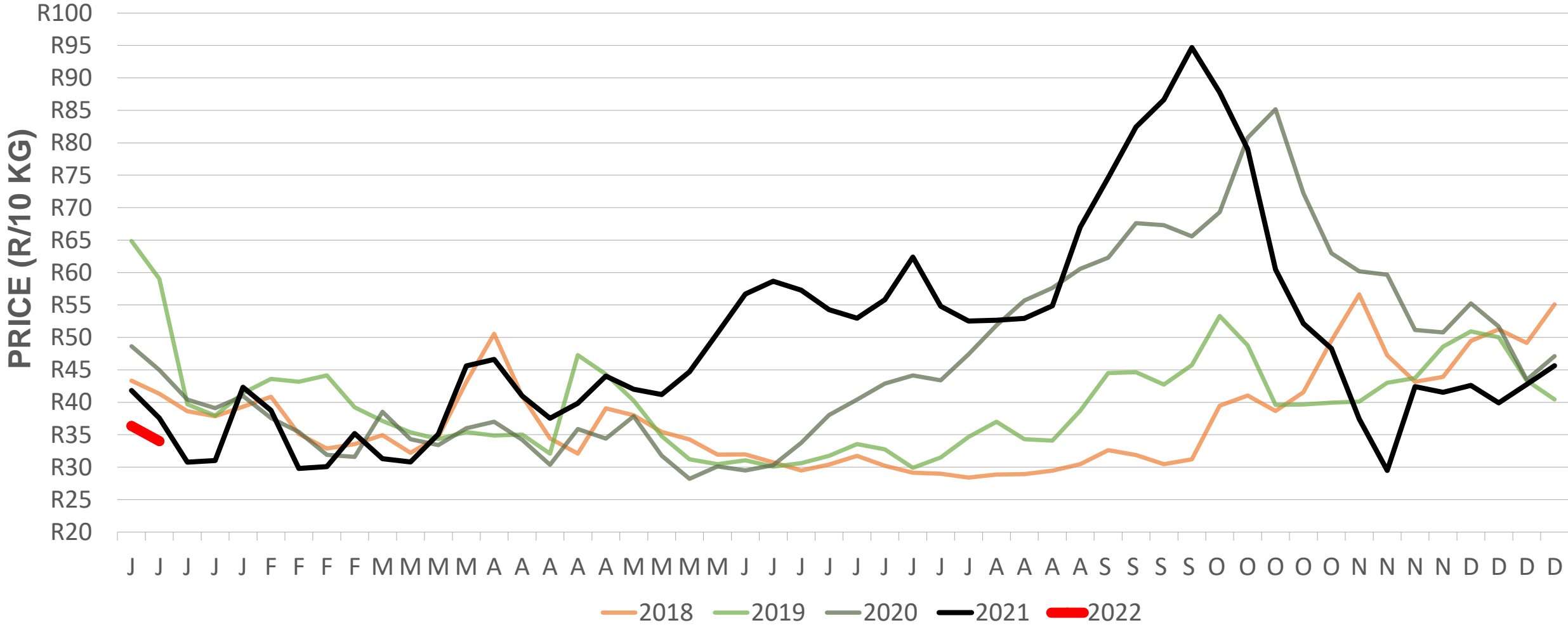
Potatoes  
Aartappels SA

# Weekly Market Information

14 January 2022

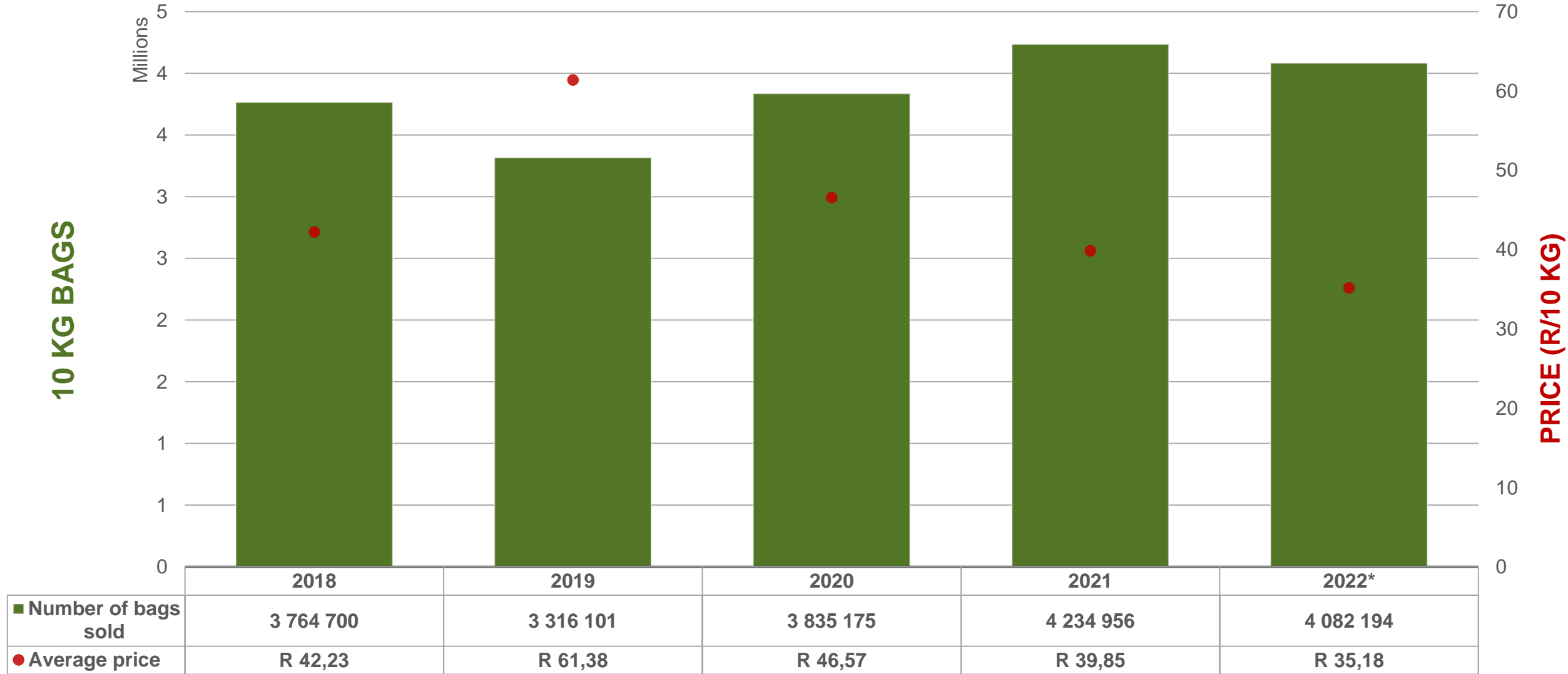
[www.potatoes.co.za](http://www.potatoes.co.za)

# Average weekly price – all markets & all classes



<b>Weekly price</b>	
R34,02	 6% (week on week)

# Cumulative total number of 10 kg bags sold on markets: 2022 calendar year

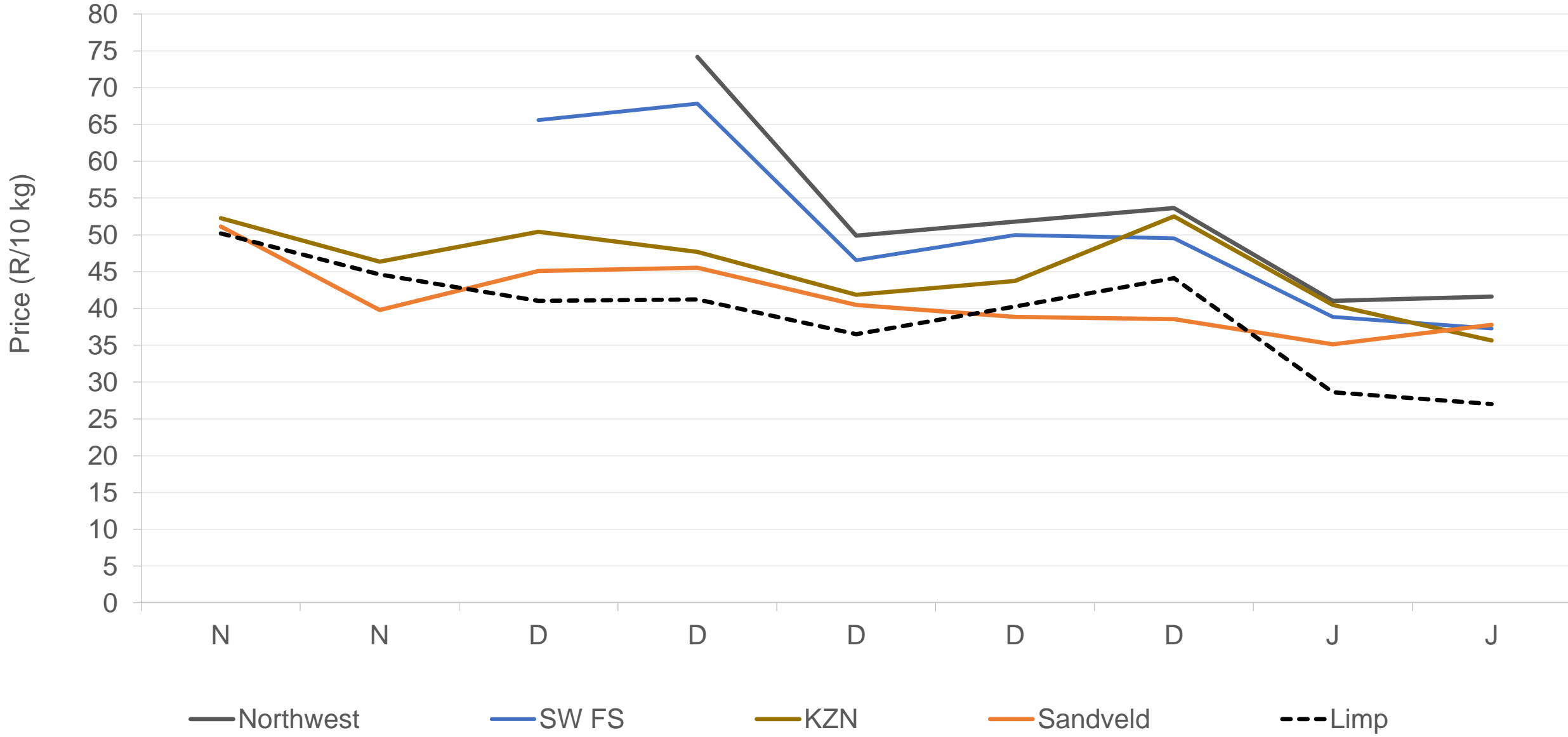


Sold 361 574 bags less than the first two weeks of the year (2016 to 2021) for 2022

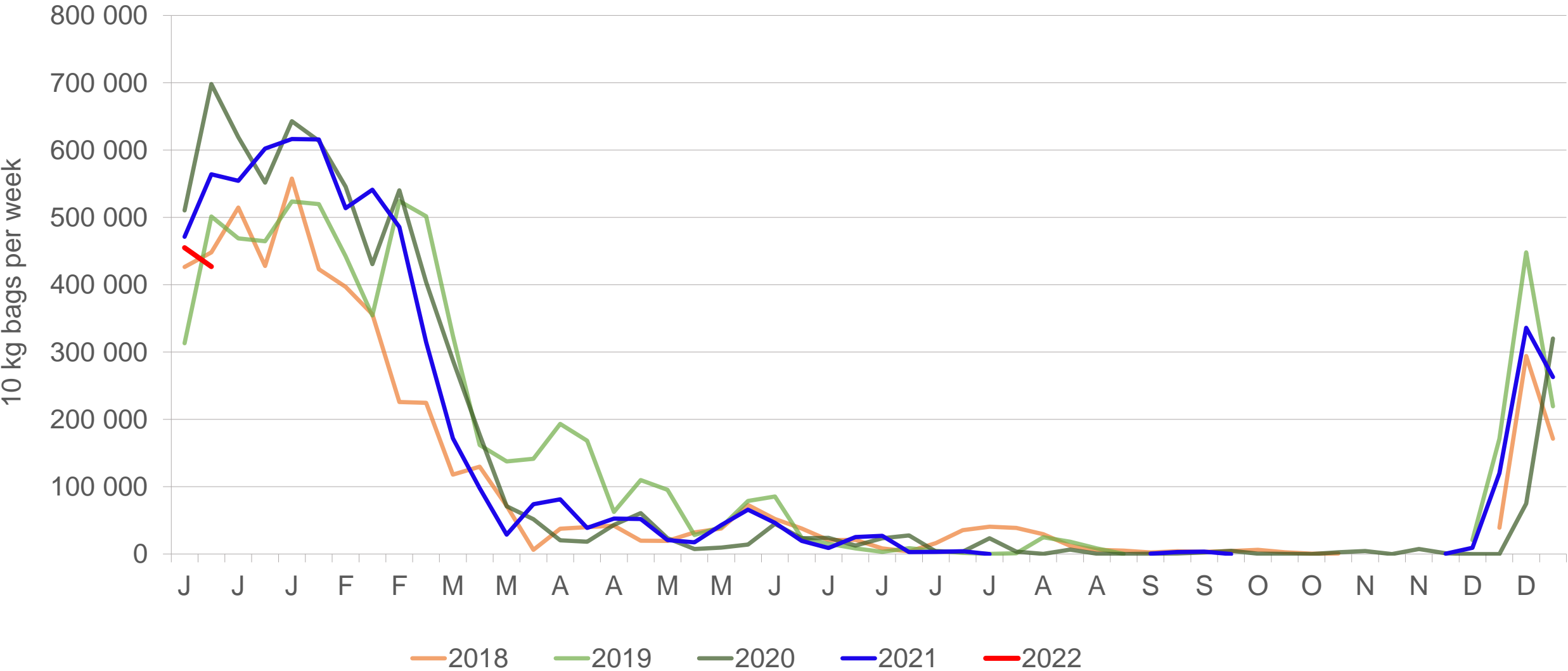
# RSA daily Price versus Daily Available stocks (all classes & all sizes)



# Average Class 1 Medium prices in regions

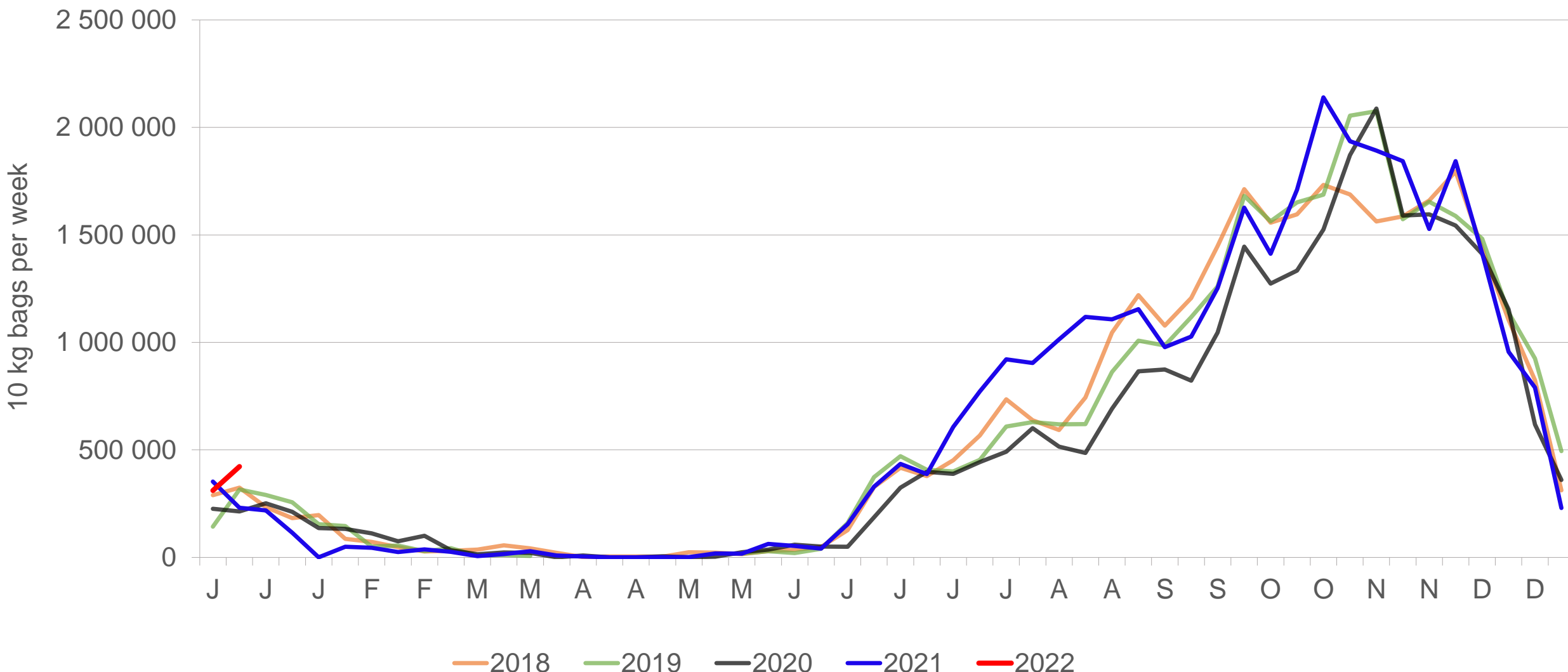


# South Western Free State: Amount of 10 kg bags per week sold on FPMs



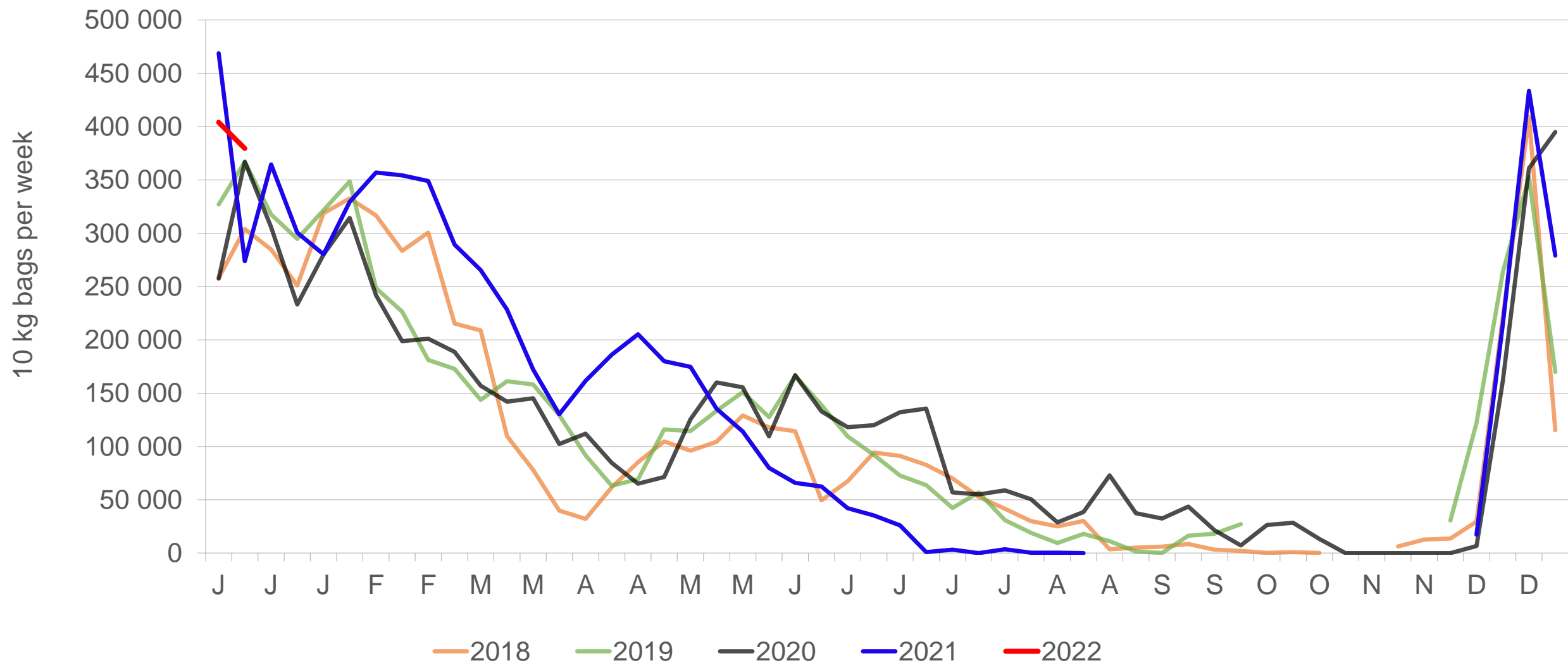
Sold 113 913 bags less than the first two weeks of the year for 2022.

# Limpopo: Amount of 10 kg bags per week sold on FPMs (all classes)



Sold 194 938 bags more than the **first two weeks of the year** for 2022.

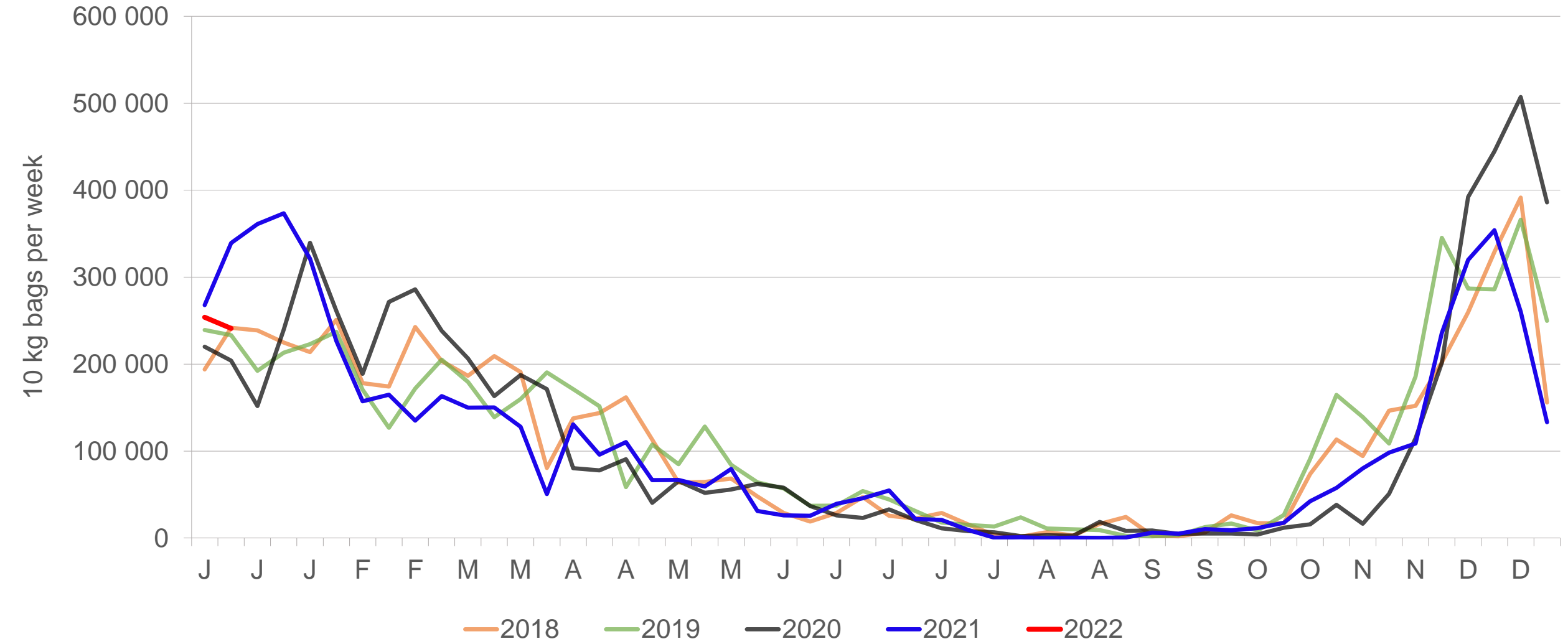
# North West: Amount of 10 kg bags per week sold on FPMs (all classes)



Sold 141 715 bags more than the **first two weeks** of the year for 2022.

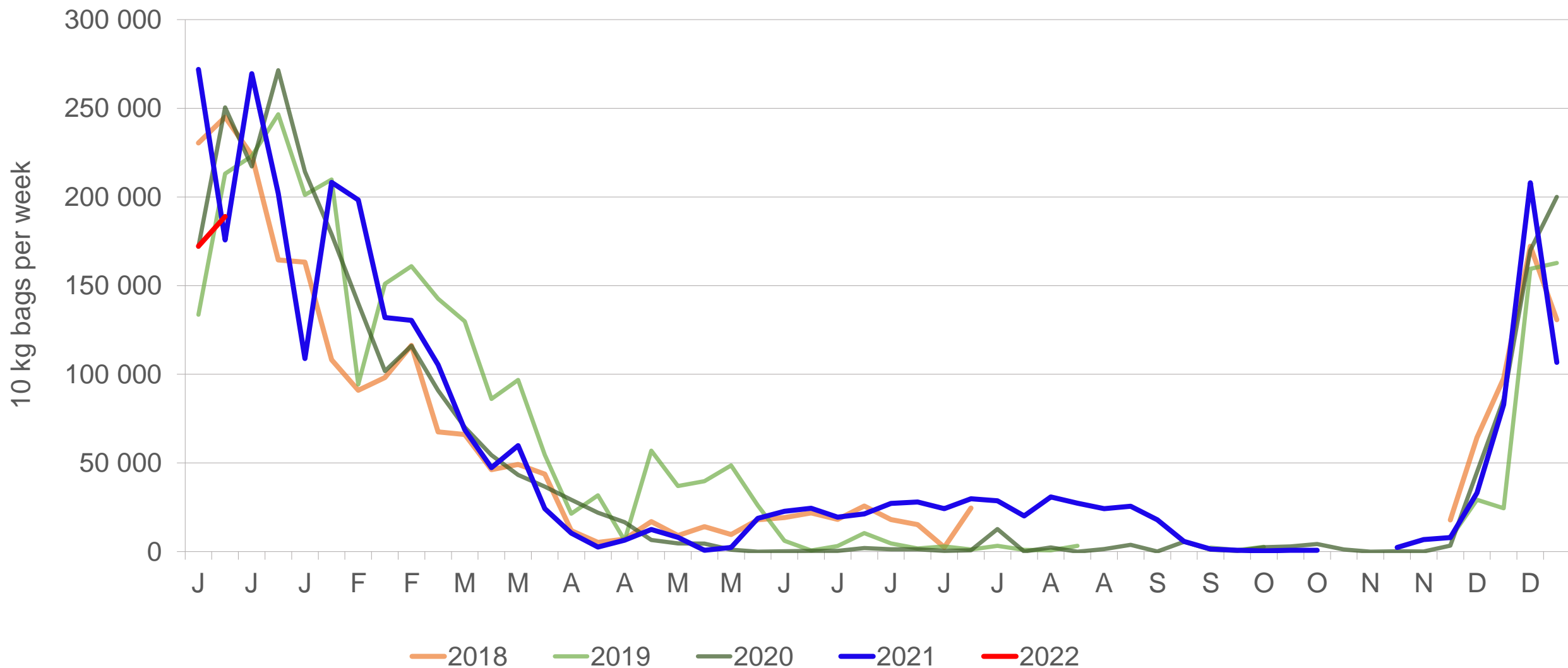


# KwaZulu-Natal: Amount of 10 kg bags per week sold on FPMs (all classes)



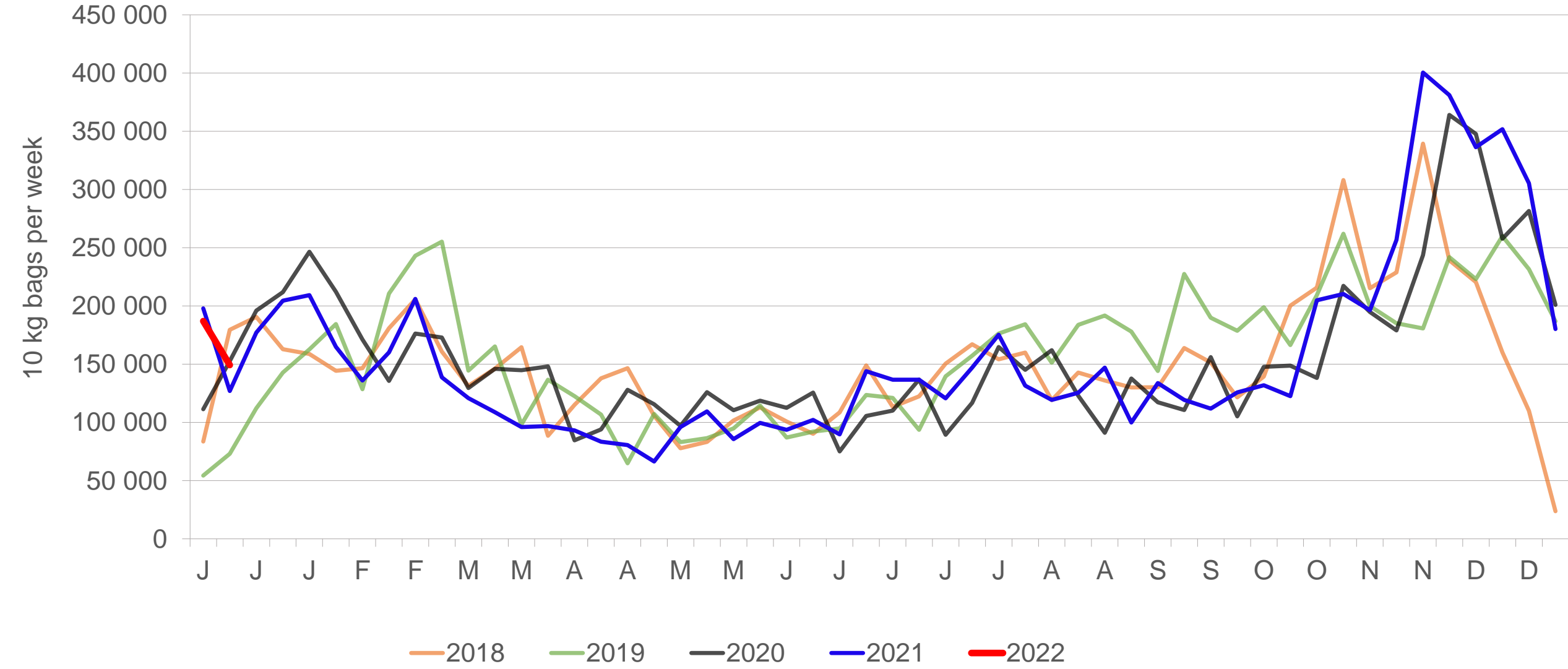
Sold 63 108 bags **more** than the **first two weeks of the year** for 2022.

# Gauteng: Amount of 10 kg bags per week sold on FPMs (all classes)



Sold 53 132 bags less than the **first two weeks of the year** for 2022.

# Sandveld: Amount of 10 kg bags per week sold on FPMs (all classes)



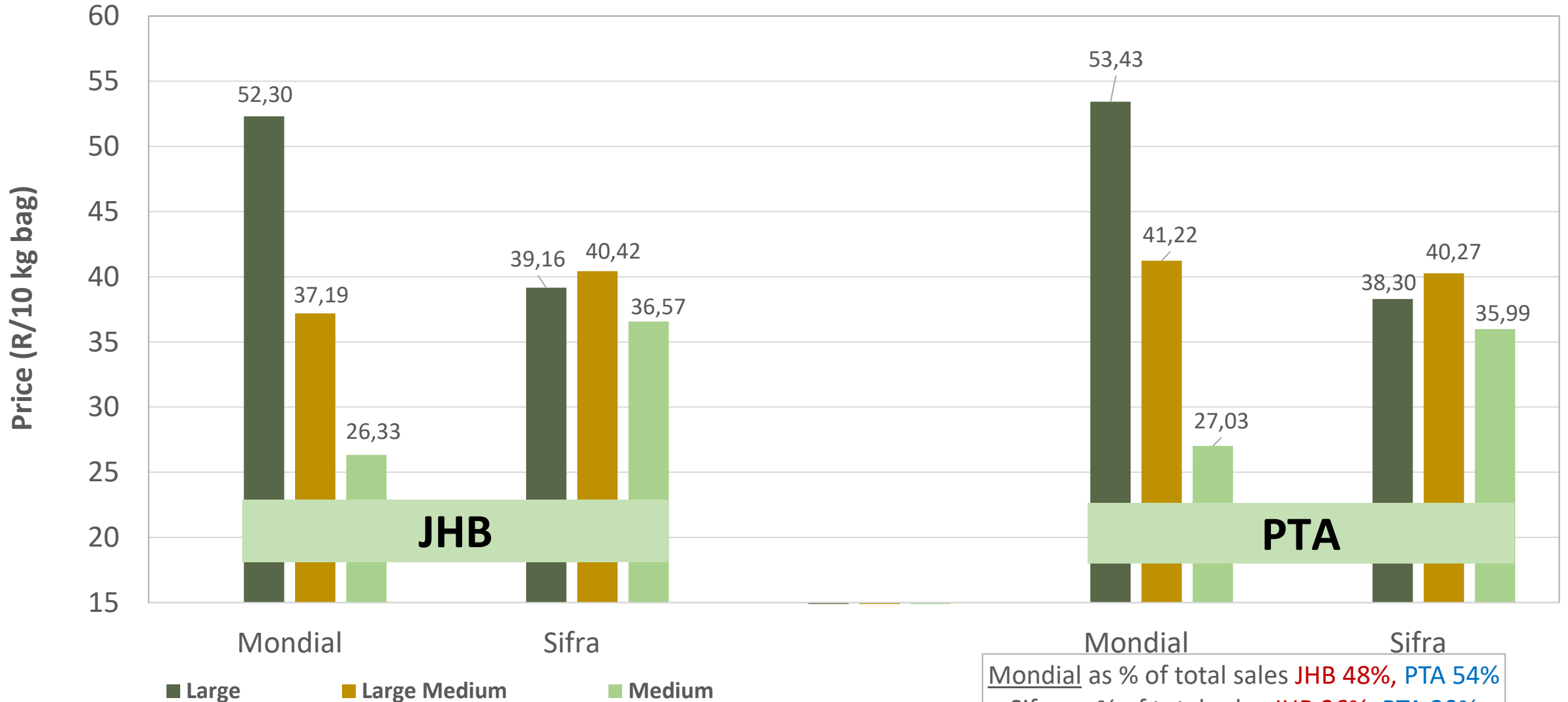
Sold 98 871 bags more than the **first two weeks of the year** for 2022

# Average weekly prices and volumes for 10 kg bags of potatoes sold on selected markets from selected production regions



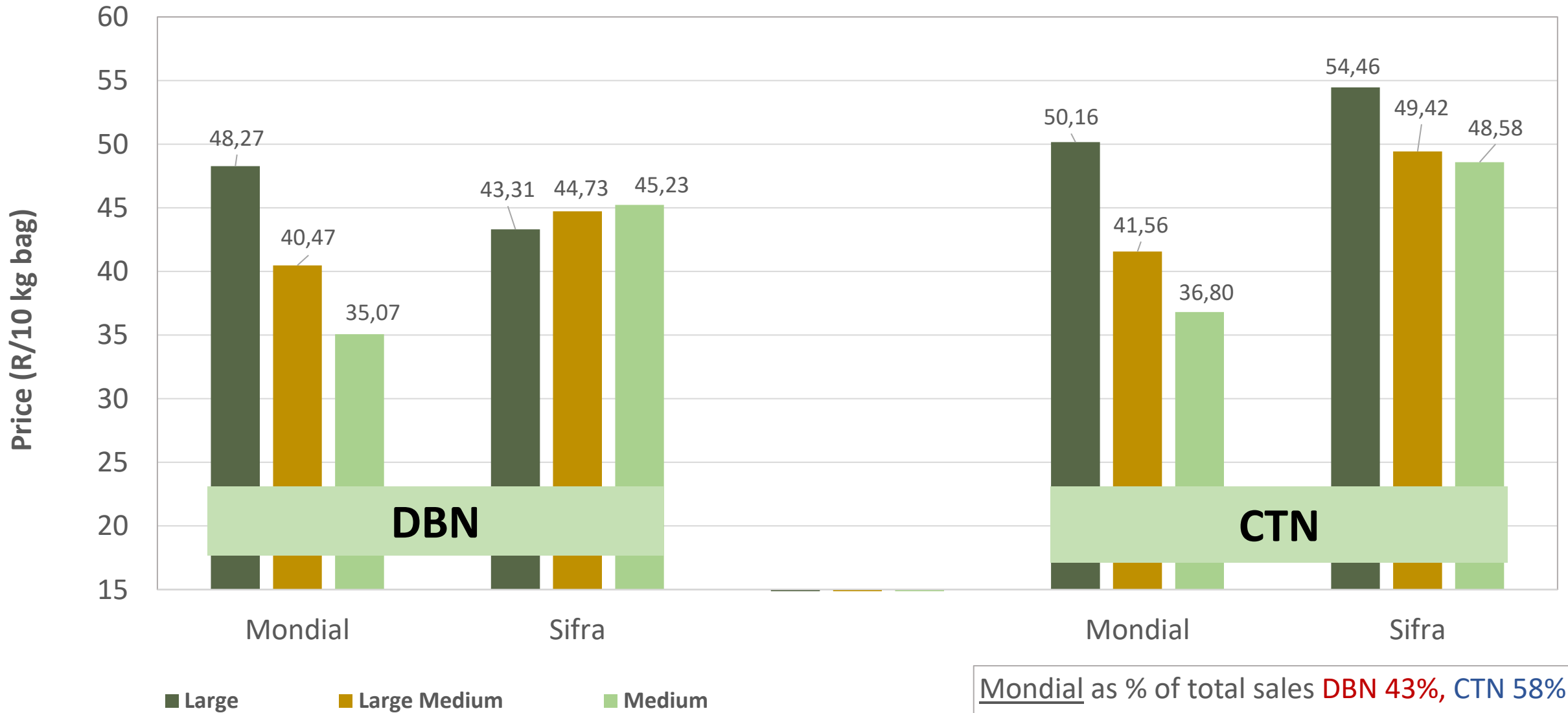
Klas & Grootte	South Western Freestate				Limpopo				North West				KwaZulu-Natal				Gauteng				Sandveld		All Regions	
	JOH		PRE		JOH		PRE		JOH		PRE		DUR		PIE		JOH		PRE		CAP		All Markets	
	Volume	Prices	Volume	Prices	Volume	Prices	Volume	Prices	Volume	Prices	Volume	Prices	Volume	Prices	Volume	Prices	Volume	Prices	Volume	Prices	Volume	Prices	Volume	Prices
	10kg	R/10kg	10kg	R/10kg	10kg	R/10kg	10kg	R/10kg	10kg	R/10kg	10kg	R/10kg	10kg	R/10kg	10kg	R/10kg	10kg	R/10kg	10kg	R/10kg	10kg	R/10kg	10kg	R/10kg
1L	29 375	37,01	7 168	36,92	45 901	40,96	20 490	48,10	33 256	45,19	29 497	42,52	9 614	48,60	5 961	48,20	30 022	42,33	10 251	44,93	10 221	51,56	447 441	43,87
1L/M	50 657	37,24	19 297	36,27	74 506	30,43	29 784	37,82	39 236	45,14	28 541	46,25	8 624	39,80	6 617	35,95	24 350	36,39	10 345	39,59	21 229	43,14	539 567	38,10
1M	34 312	35,59	13 117	34,00	69 870	23,48	23 939	24,89	23 913	41,30	23 837	39,66	11 901	34,11	7 792	34,65	31 325	29,84	15 362	28,59	21 595	40,05	446 620	32,42
1S	3 600	17,14	393	13,52	18 425	11,40	5 780	11,28	8 189	25,43	3 596	20,63	4 676	23,54	5 507	15,39	8 644	18,42	4 326	14,12	8 752	31,84	114 965	18,71
1S/M	13 452	24,69	4 416	24,40	15 216	13,71	11 741	16,93	14 774	29,62	7 081	28,00	381	35,12	558	31,46	3 524	21,12	1 935	21,07	6 485	31,31	136 157	24,20
1XL	-	-	-	-	194	42,36	-	-	-	-	-	-	-	-	-	-	-	-	-	-	-	-	194	42,36
1XS	1 892	14,64	-	-	5 142	6,61	-	-	10 080	20,41	-	-	-	-	-	-	1 702	10,58	-	-	-	-	19 354	14,93
1XXS	-	-	-	-	-	-	-	-	-	-	-	-	-	-	-	-	-	-	-	-	-	-	-	-
2L	1 152	37,13	668	31,91	6 165	40,94	6 801	39,38	550	50,34	1 809	34,42	3 983	39,44	1 477	43,05	558	32,75	774	40,61	5 714	39,33	69 659	39,25
2L/M	1 268	37,16	2 375	32,84	6 253	25,94	5 075	35,90	2 445	28,05	992	38,21	3 696	37,33	2 145	37,14	1 086	27,37	451	31,29	13 486	36,32	79 742	33,26
2M	328	25,31	890	28,88	3 925	19,15	3 043	19,58	149	21,65	1 839	32,25	2 336	32,74	1 304	31,40	2 382	19,42	175	31,75	17 487	32,60	74 527	27,00
2S	33	24,85	36	20,72	1 299	4,27	228	3,23	-	-	468	16,21	771	16,33	365	23,85	633	12,05	412	9,97	2 969	20,54	14 679	15,49
2S/M	543	19,51	19	22,53	1 059	16,04	1 530	7,80	-	-	820	21,95	-	-	-	-	-	-	-	-	455	24,96	16 513	19,35
2XL	-	-	-	-	-	-	-	-	-	-	-	-	-	-	-	-	-	-	-	-	-	-	-	-
2XS	-	-	-	-	172	6,23	-	-	-	-	-	-	-	-	-	-	-	-	-	-	-	-	1 364	3,88
2XXS	-	-	-	-	-	-	-	-	-	-	-	-	-	-	-	-	-	-	-	-	-	-	-	-
3L	1 629	21,85	1 115	16,91	1 680	16,51	455	26,59	440	29,17	720	41,57	35	25,00	-	-	386	14,53	1 113	13,37	523	31,16	15 385	22,97
3L/M	1 596	18,30	102	22,17	-	-	281	27,11	1 870	28,11	1 172	35,31	791	31,45	110	31,45	124	15,00	208	13,38	99	24,00	12 152	24,62
3M	5 313	15,18	1 554	15,49	1 129	14,96	657	21,90	3 664	17,13	662	13,67	1 296	21,07	868	29,19	4 594	9,09	808	17,76	1 207	25,45	44 894	18,49
3S/M	-	-	-	-	144	4,44	-	-	1 650	18,60	112	25,92	-	-	-	-	-	-	-	-	-	-	2 756	18,91
3XS	-	-	-	-	-	-	-	-	-	-	-	-	-	-	-	-	-	-	-	-	-	-	44	5,00
3XXS	-	-	-	-	-	-	-	-	-	-	-	-	-	-	-	-	-	-	-	-	-	-	-	-
4L	-	-	-	-	-	-	11	8,09	-	-	-	-	-	-	-	-	-	-	-	-	-	-	49	13,47
4L/M	-	-	-	-	-	-	-	-	-	-	71	14,15	-	-	-	-	-	-	-	-	-	-	804	19,52
4M	-	-	112	8,01	-	-	168	14,99	-	-	236	6,23	194	26,70	303	23,20	-	-	-	-	39	28,72	1 921	17,14
4S	-	-	-	-	-	-	-	-	-	-	-	-	-	-	-	-	-	-	82	6,00	576	11,53	658	10,84
4S/M	-	-	-	-	-	-	-	-	-	-	-	-	-	-	-	-	-	-	-	-	288	16,61	332	15,07
Total	145 150	33,56	52 222	32,68	251 080	27,11	112 285	31,56	140 216	38,31	103 641	39,70	49 941	35,99	36 217	31,73	109 339	31,96	46 556	32,27	117 915	36,85	2 067 934	34,02

# PTA & JHB markets: Average Prices - Different Sizes (only 10 kg bags)



Mondial as % of total sales JHB 48%, PTA 54%  
 Sifra as % of total sales JHB 36%, PTA 30%


# DBN & CTN markets: Average Prices - Different Sizes (only 10 kg bags)





Mondial as % of total sales **DBN 43%**, **CTN 58%**  
Sifra as % of total sales **DBN 49%**, **CTN 30%**


# Thank you for your time

Feel free to contact us on:

 [jano@potatoes.co.za](mailto:jano@potatoes.co.za)  
[fpcoetzee@potatoes.co.za](mailto:fpcoetzee@potatoes.co.za)

 +27 (0)12 349 1906

 6 De Havilland Crescent  
Persequor Techno Park  
Persequor Park  
Pretoria

 [www.potatoes.co.za](http://www.potatoes.co.za)



Potatoes  
Aartappels SA