



## Weekly Market Information

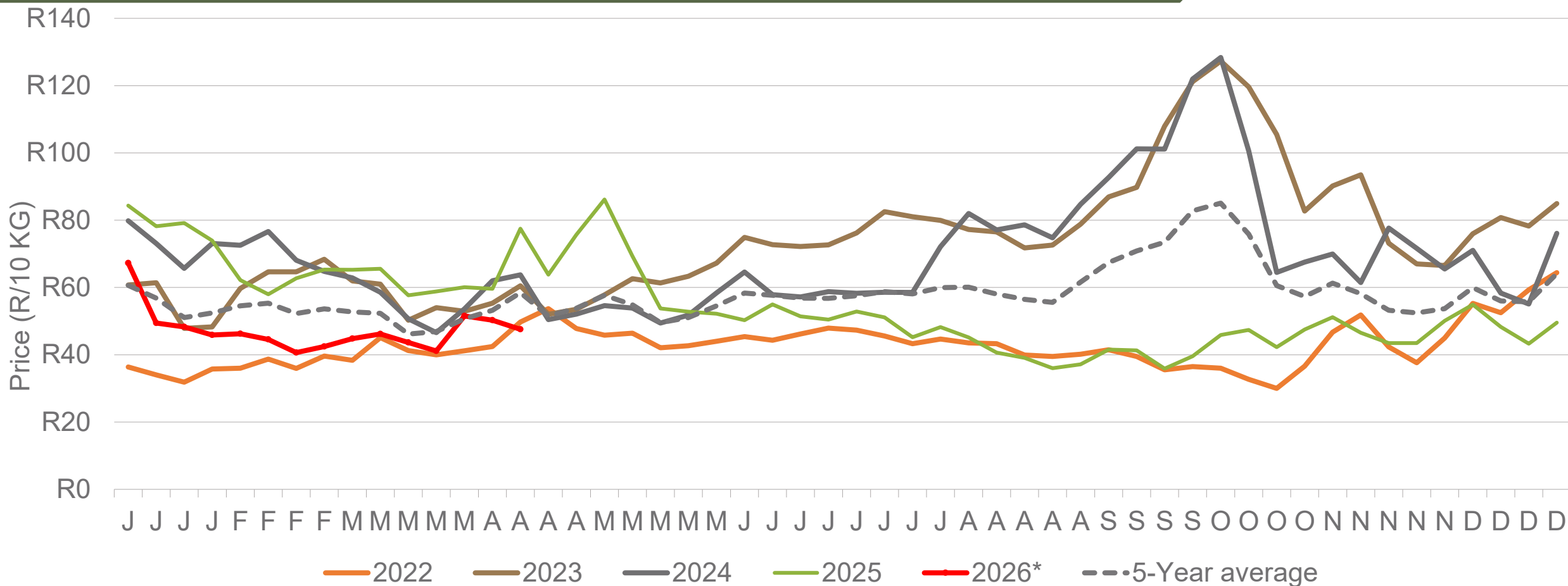
10 April 2026



Potatoes  
Aartappels SA

[www.potatoes.co.za](http://www.potatoes.co.za)

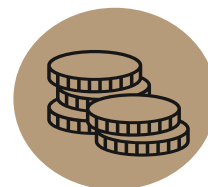
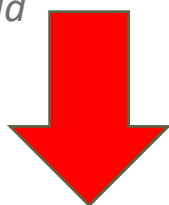
# Average weekly price – all markets & all classes



Number of bags sold

**10%**

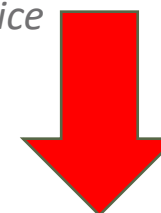
(Week on Week)



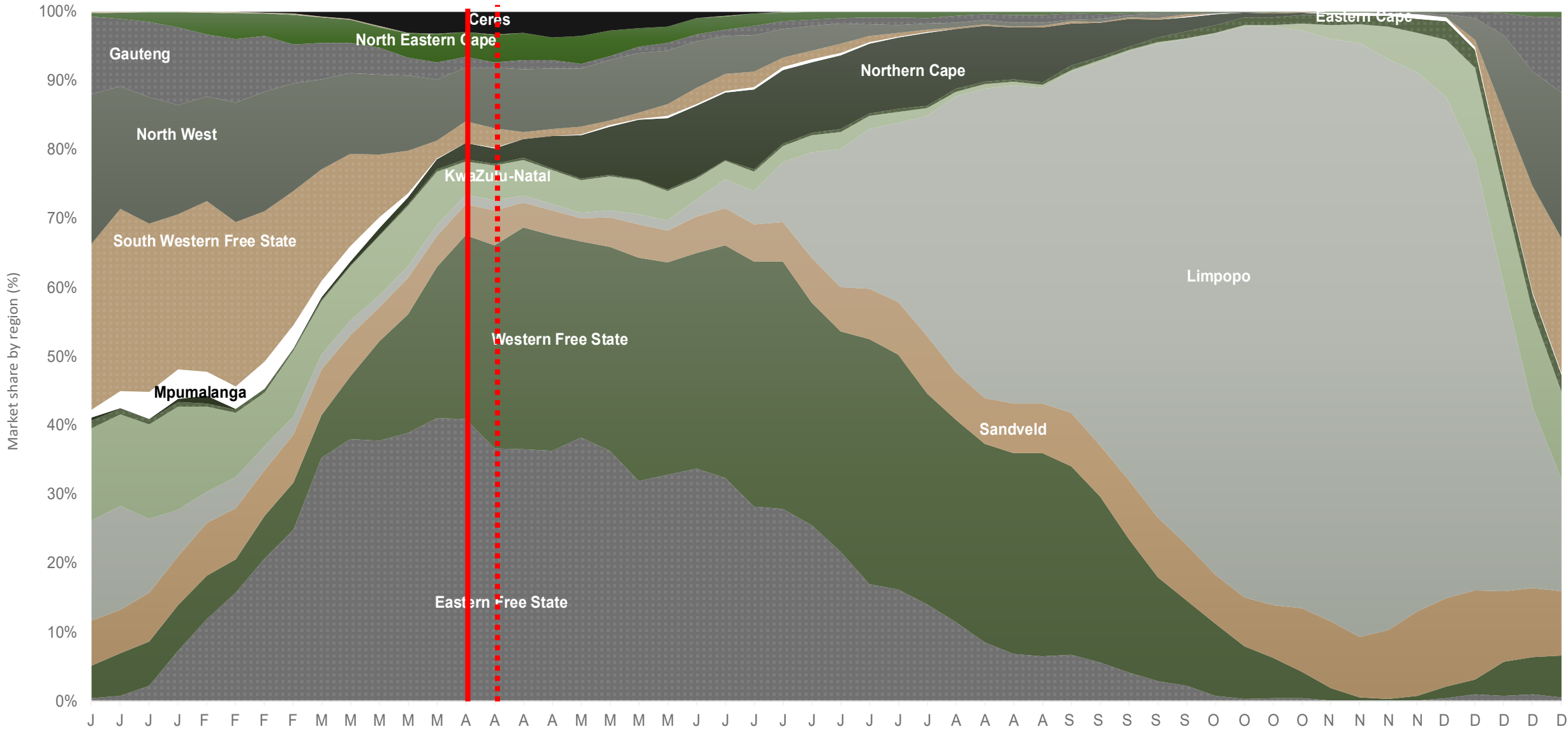
Average weekly price

**5%**

(Week on week)

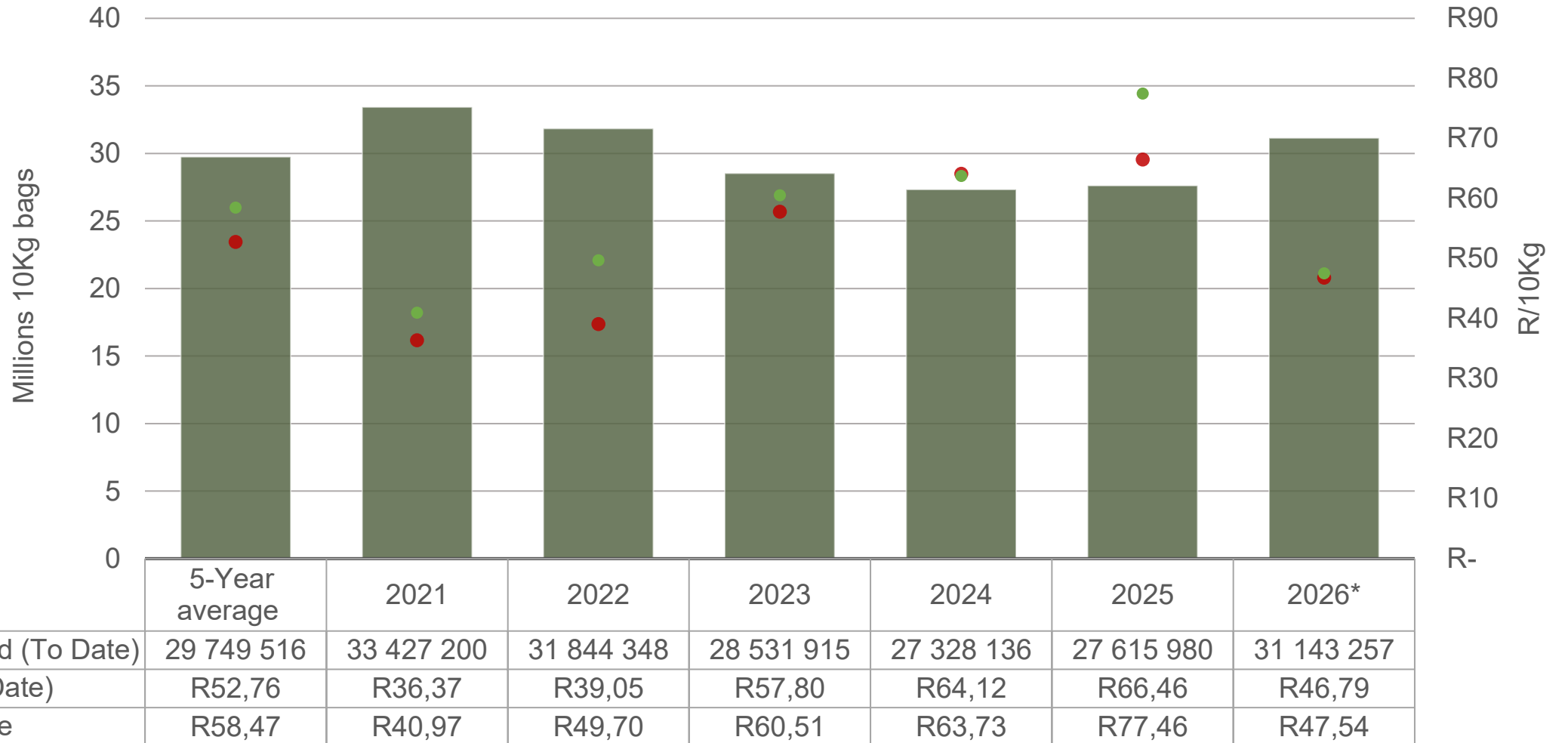


# Market share of regions on fresh produce markets 2021-2025



*Data disclaimer: Potatoes SA does not take responsibility for the accuracy or interpretation of company data re-purposed by 3rd parties*

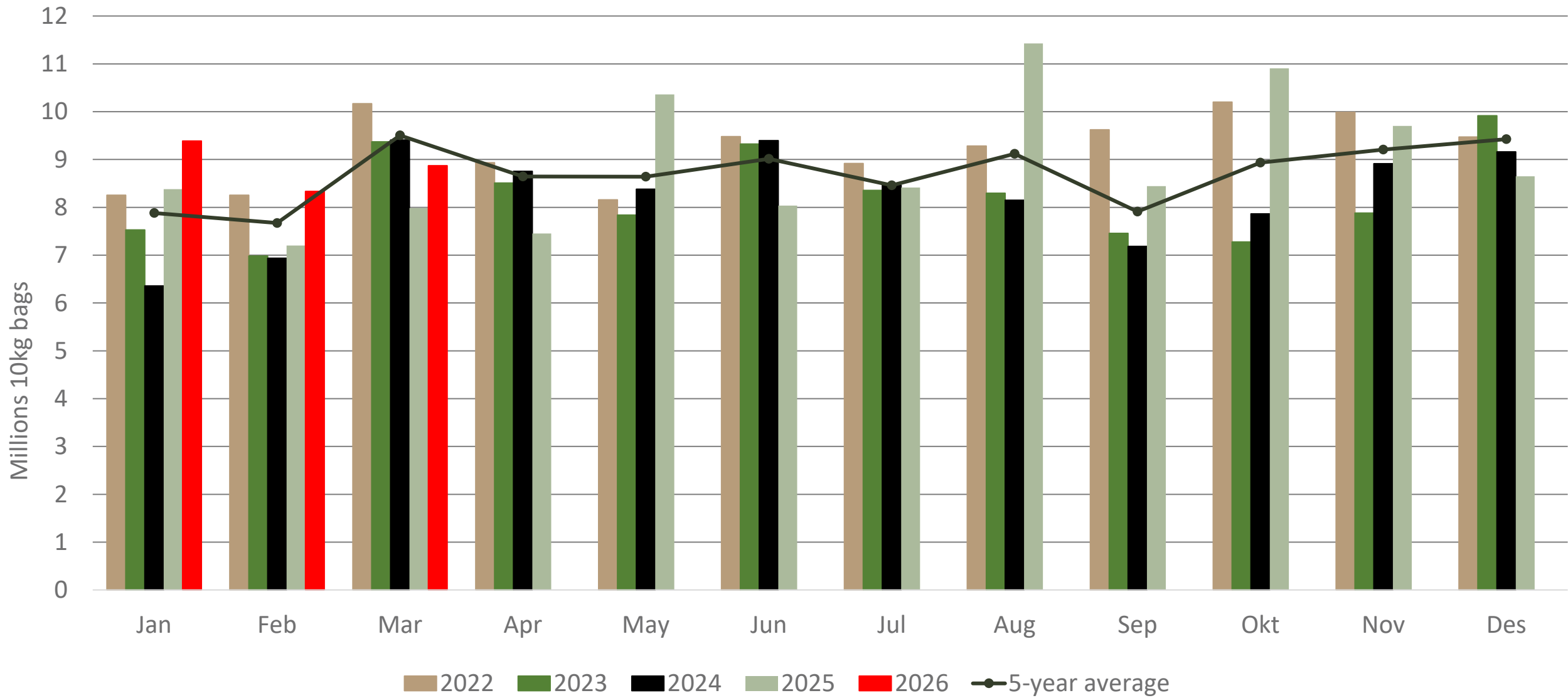
# Cumulative total number of 10 kg bags sold on markets



Sold 1,393,741 bags **more** than the **5-year average** (2021 to 2025) of the first 15 weeks of 2026

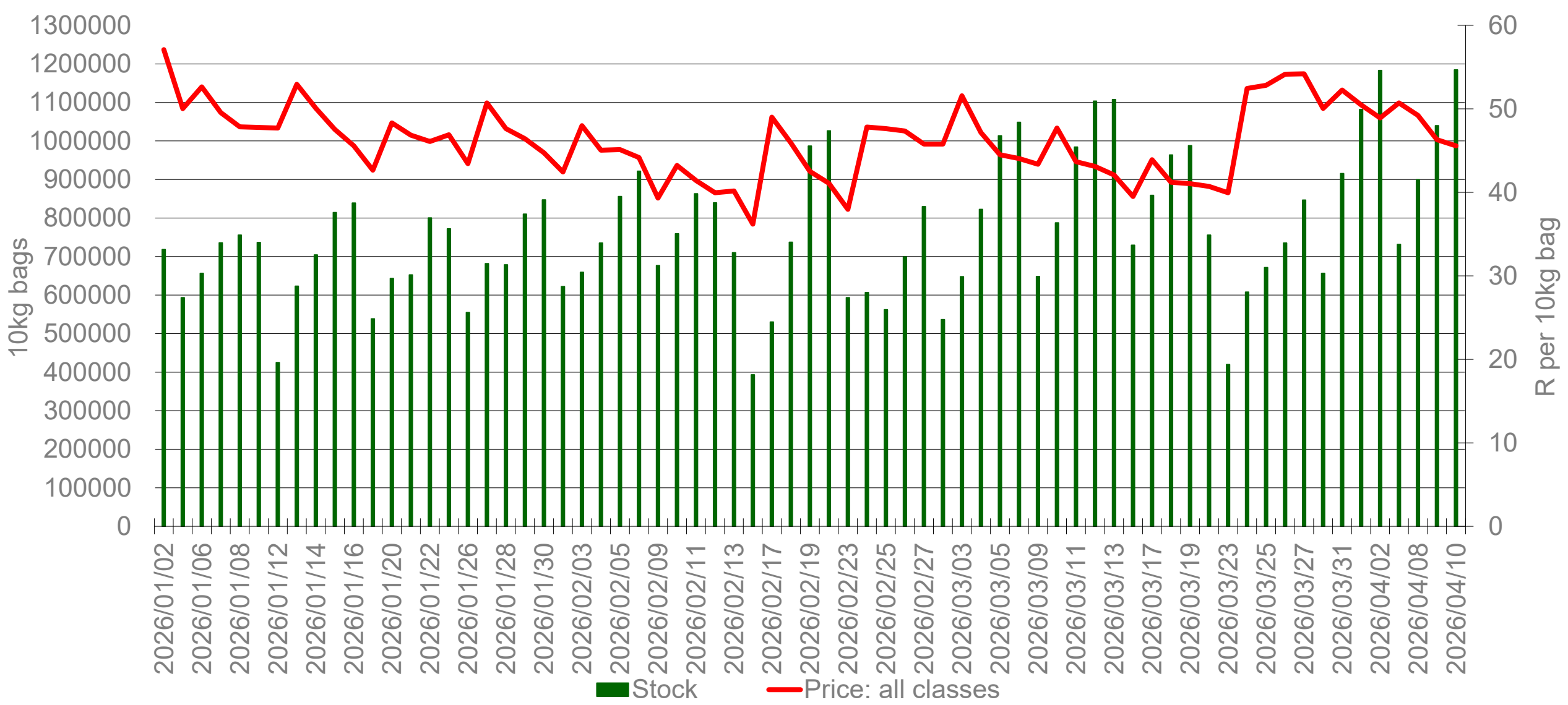
*Data disclaimer: Potatoes SA does not take responsibility for the accuracy or interpretation of company data re-purposed by 3rd parties*

# Monthly sales volumes on markets: Potatoes



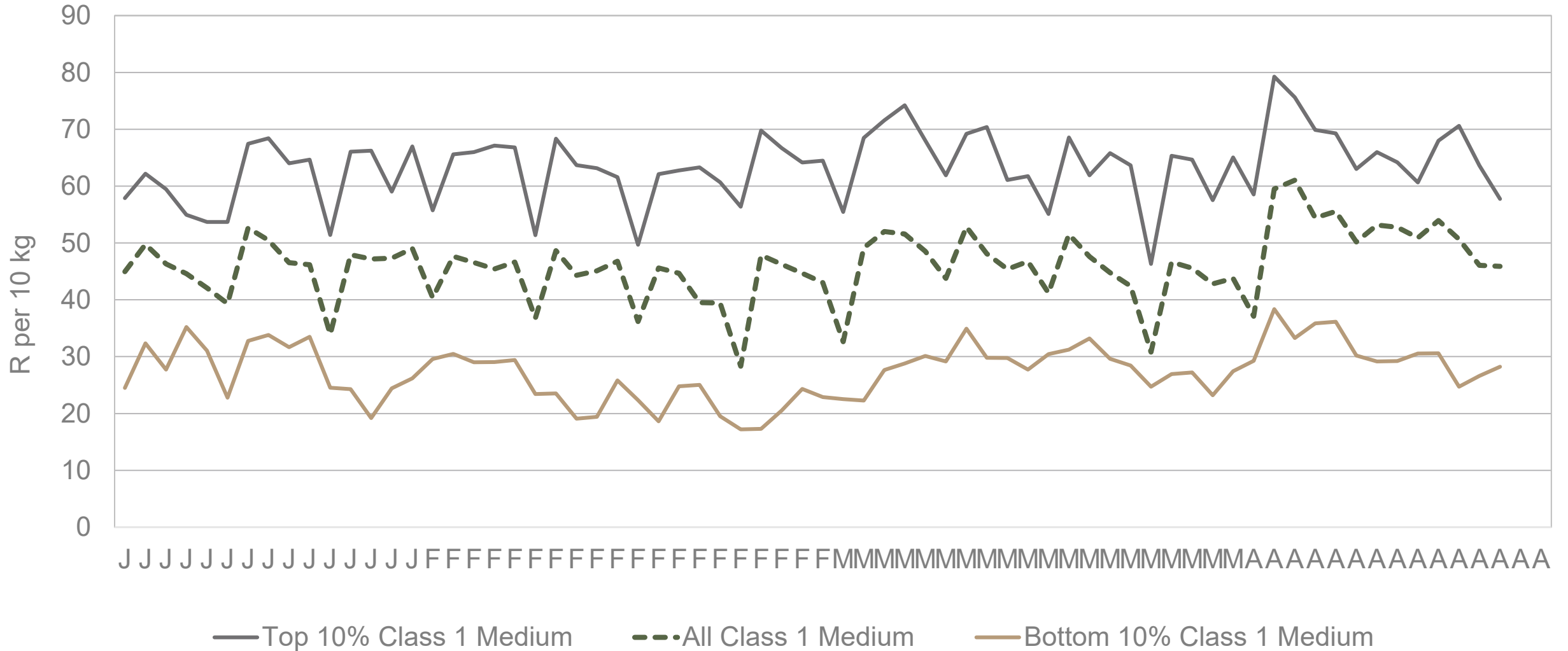
Data disclaimer: Potatoes SA does not take responsibility for the accuracy or interpretation of company data re-purposed by 3rd parties

# RSA daily price versus daily available stocks (all classes & all sizes)



Data disclaimer: Potatoes SA does not take responsibility for the accuracy or interpretation of company data re-purposed by 3rd parties

# JHB market daily : Top 10% versus bottom 10% prices – Class 1 Medium (since January 2026)



Data disclaimer: Potatoes SA does not take responsibility for the accuracy or interpretation of company data re-purposed by 3rd parties

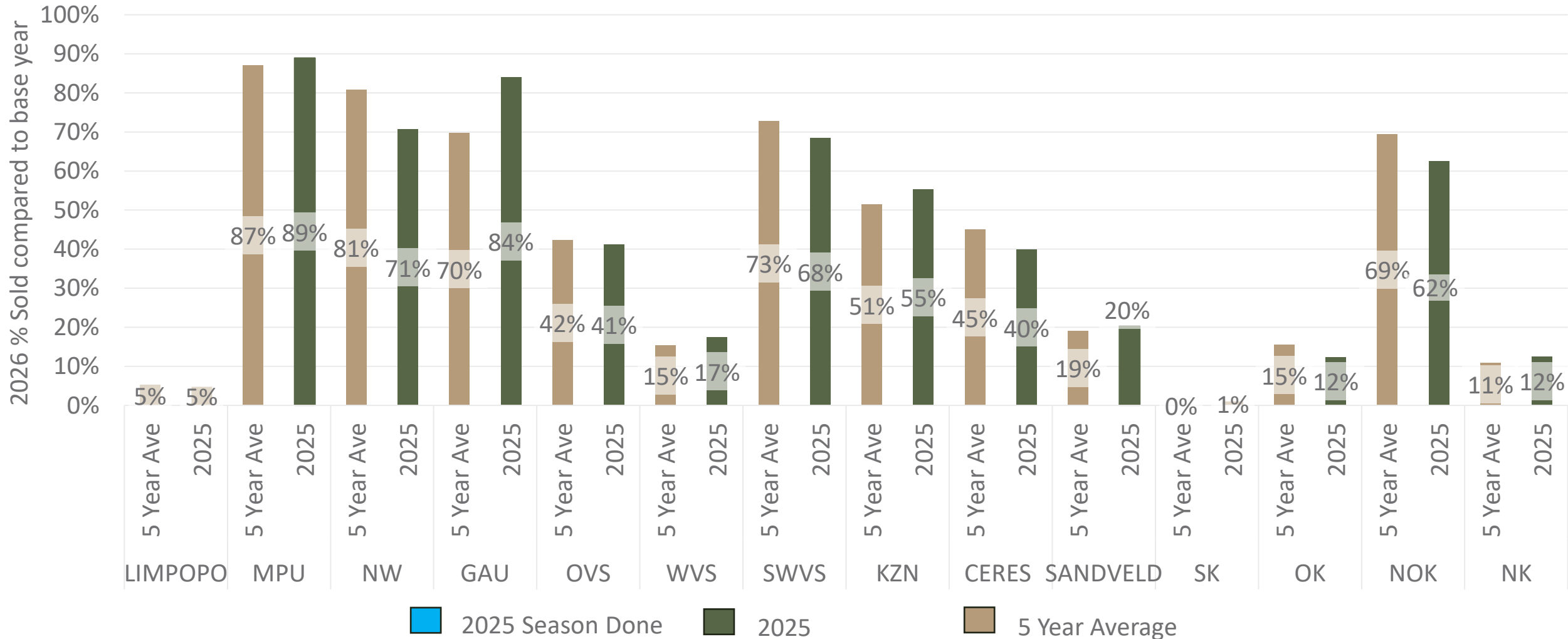
# FPM Sales pace comparison per region

## 2026 compared to 5-year average and 2025



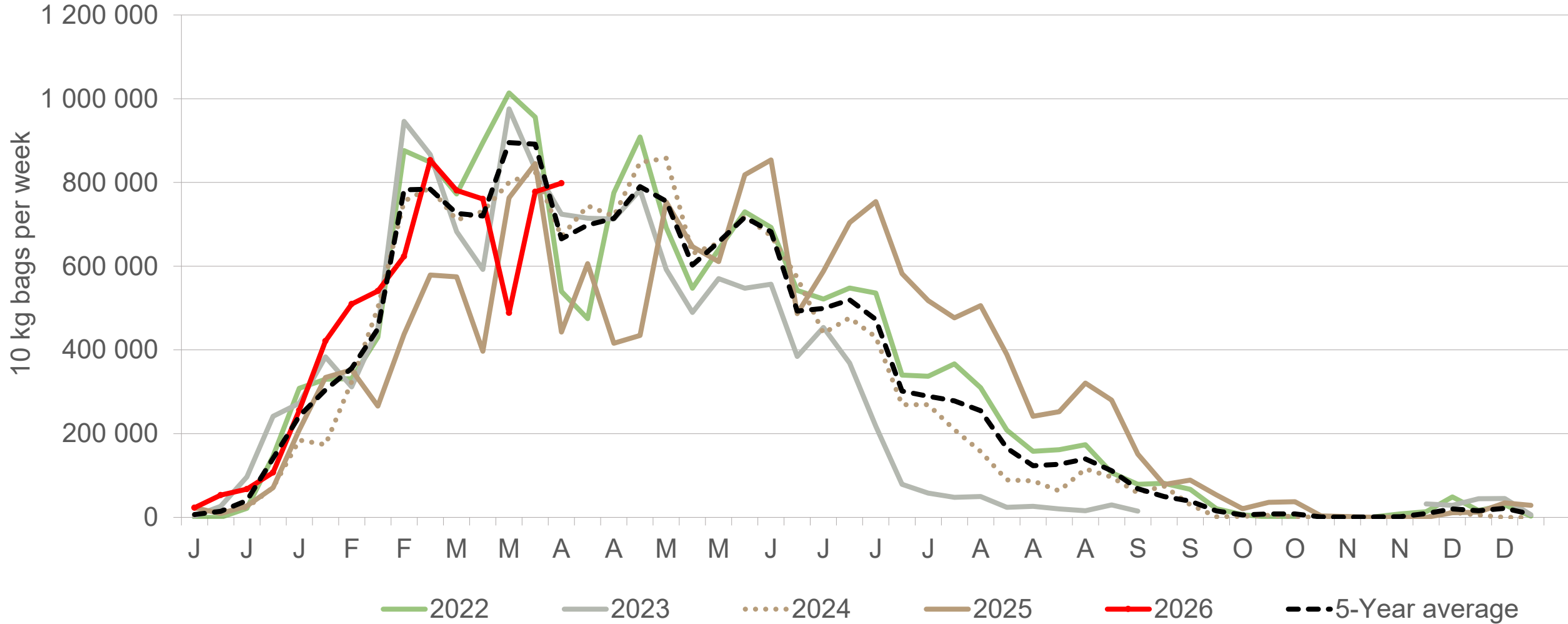
The *FPM Sales pace* compares the current year's cumulative volumes sold on the FPM with the previous year and the five-year average. Differences in these trends reflect variations in hectares planted, regional weather conditions, yield performance, and market timing. Blue indicates regions that are done delivering for this season. Seasons are based on calendar year.

*Note: This comparison is based on total volumes sold, not on hectares planted*



*Data disclaimer: Potatoes SA does not take responsibility for the accuracy or interpretation of company data re-purposed by 3rd parties*

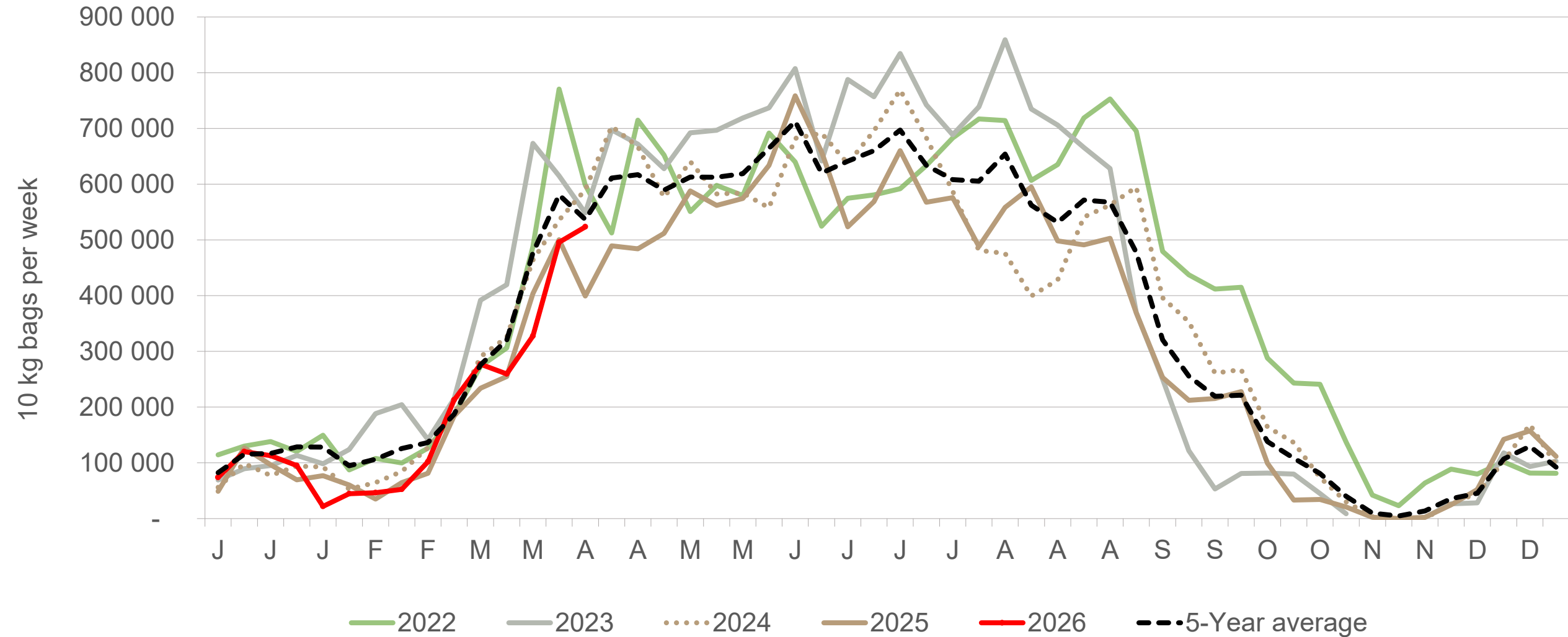
# Eastern Free State: Amount of 10 kg bags per week sold on FPMs (all classes)



Sold 32% bags **more** than the first 15 weeks of 2025 and 40,765 **more** than the 5-year average (2021 to 2025) of the first 15 weeks of each year.

*Data disclaimer: Potatoes SA does not take responsibility for the accuracy or interpretation of company data re-purposed by 3rd parties*

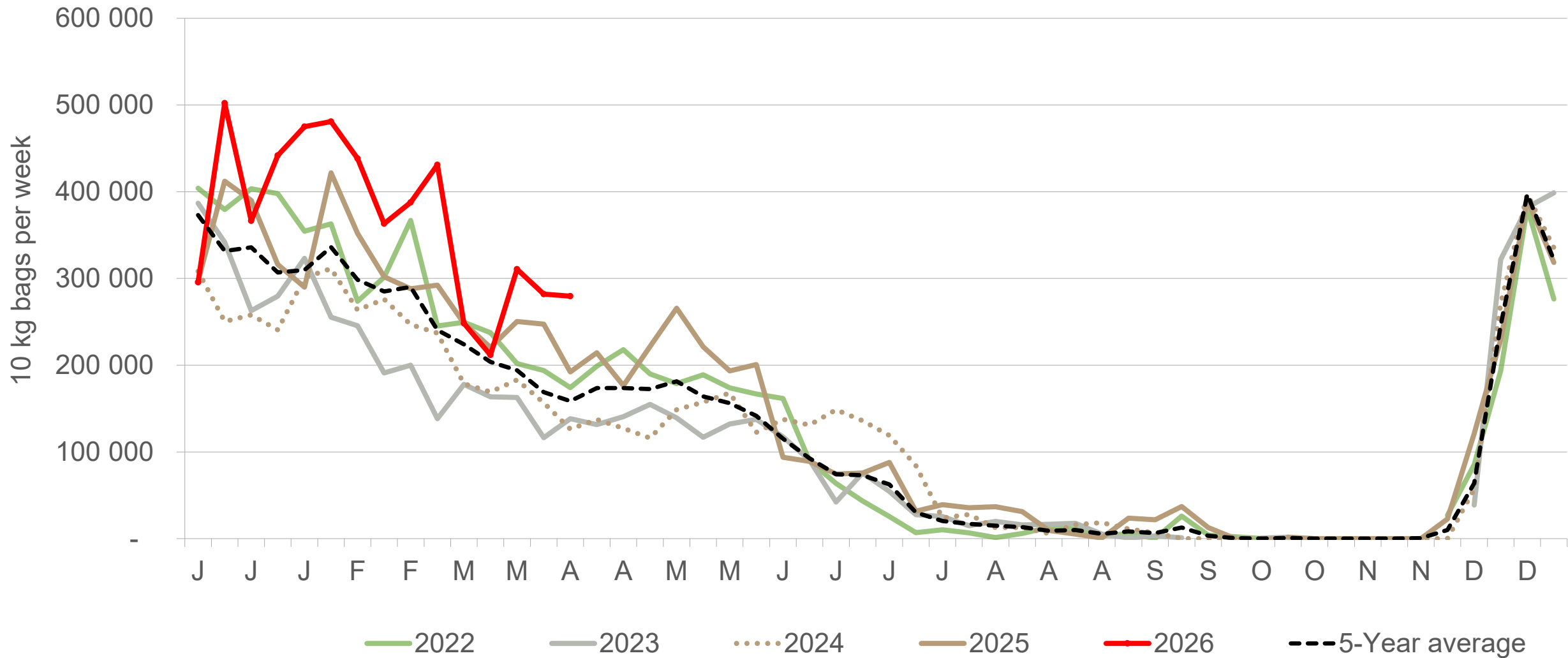
# Western Free State : Amount of 10 kg bags per week sold on FPMs (all classes)



Sold 5% bags **more** than the first 15 weeks of 2025 and 647,308 bags **less** than the 5-year average (2021 to 2025) of the first 15 weeks of each year.

*Data disclaimer: Potatoes SA does not take responsibility for the accuracy or interpretation of company data re-purposed by 3rd parties*

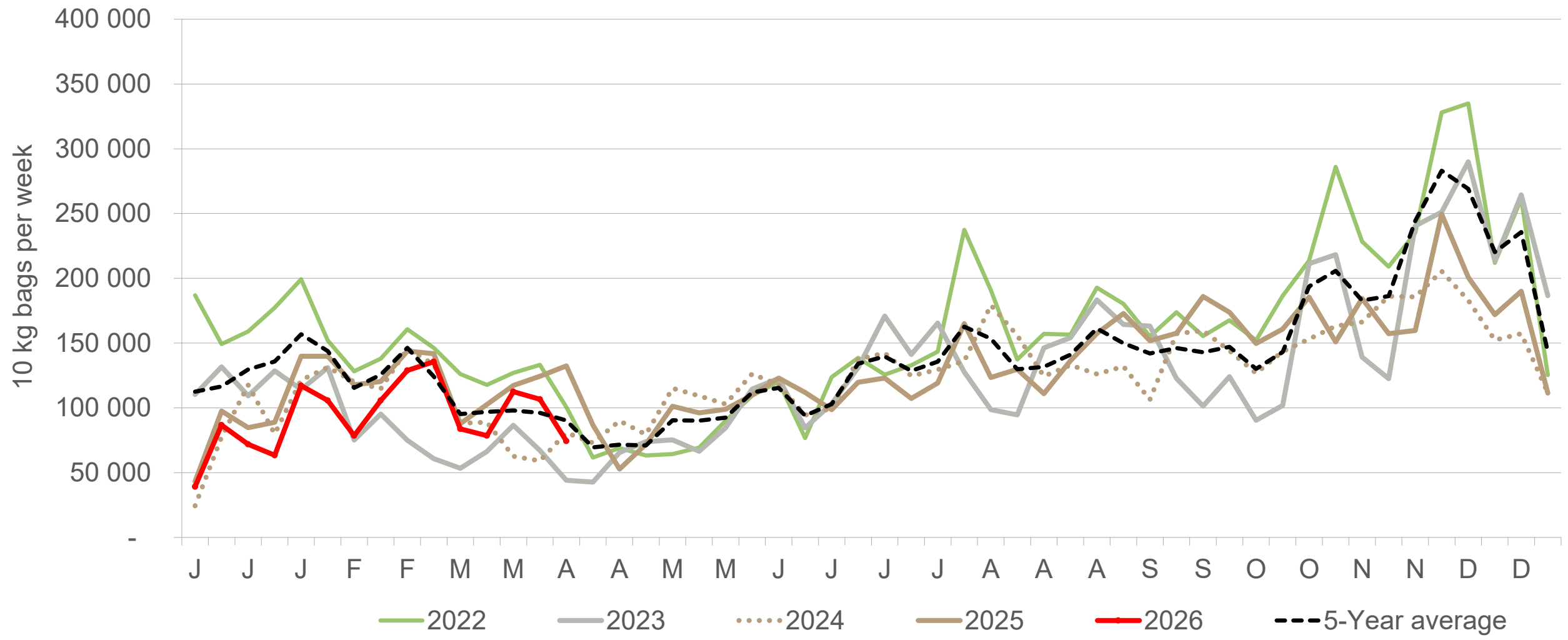
# North-West: Amount of 10 kg bags per week sold on FPMs (all classes)



Sold 22% bags **more** than the first 15 weeks of 2025 and 1,458,376 **more** than the 5-year average (2021 to 2025) of the first 15 weeks of each year.

*Data disclaimer: Potatoes SA does not take responsibility for the accuracy or interpretation of company data re-purposed by 3rd parties*

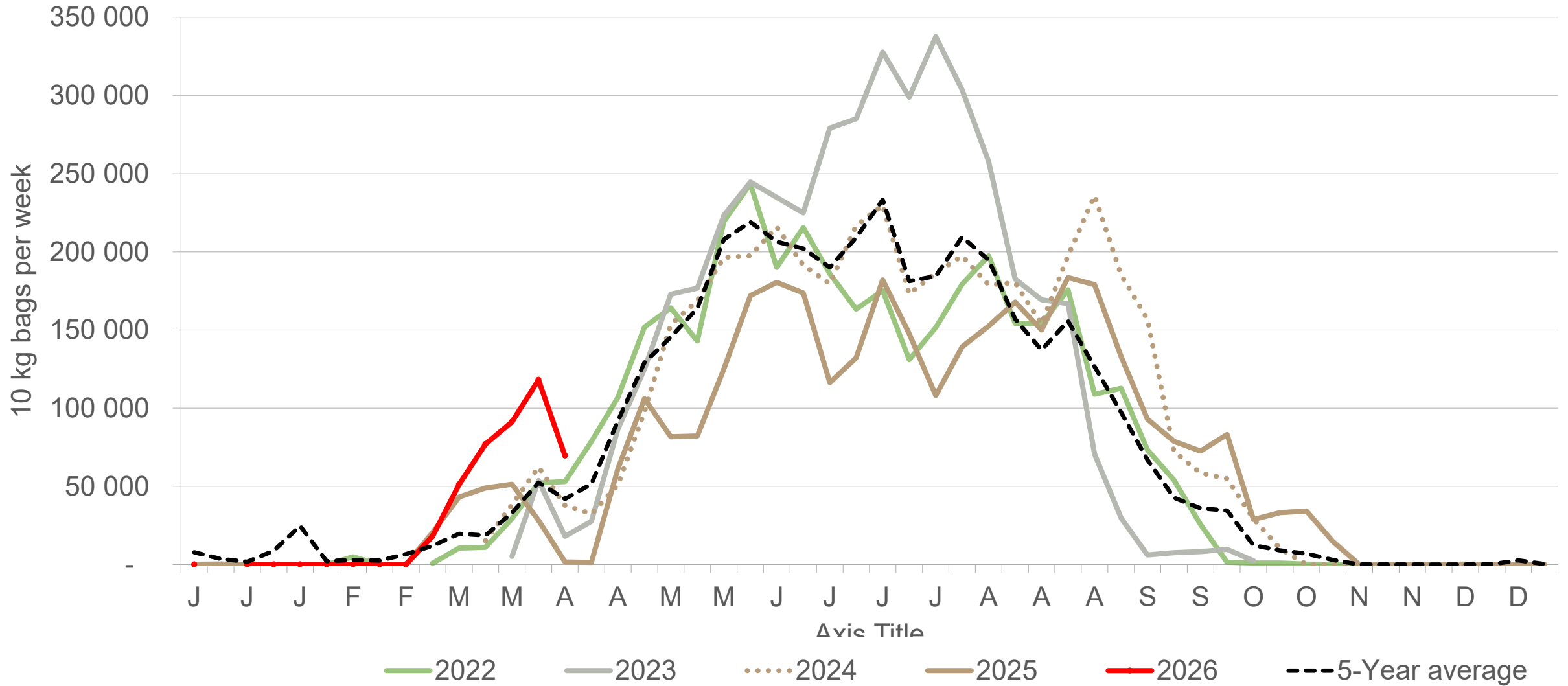
# Sandveld: Amount of 10 kg bags per week sold on FPMs (all classes)



Sold 17% bags **less** than the first 15 weeks of 2025 and 394,420 bags **less** than the 5-year average (2021 to 2025) of the first 15 weeks of each year.

*Data disclaimer: Potatoes SA does not take responsibility for the accuracy or interpretation of company data re-purposed by 3rd parties*

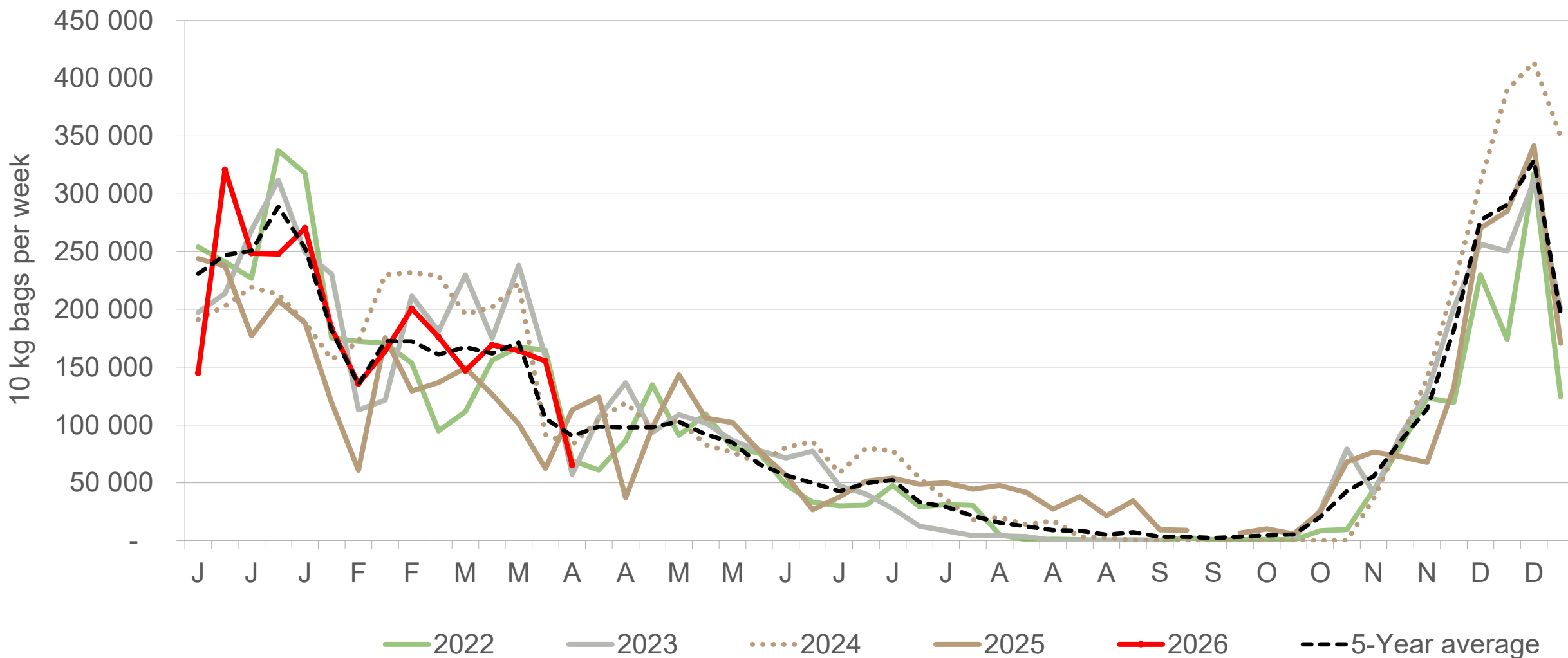
# Northern Cape: Amount of 10 kg bags per week sold on FPMs (all classes)



Sold 119% bags **more** than the first 15 weeks of 2025 and 186,327 bags **more** than the 5-year average (2021 to 2025) of the first 15 weeks of each year.

*Data disclaimer: Potatoes SA does not take responsibility for the accuracy or interpretation of company data re-purposed by 3rd parties*

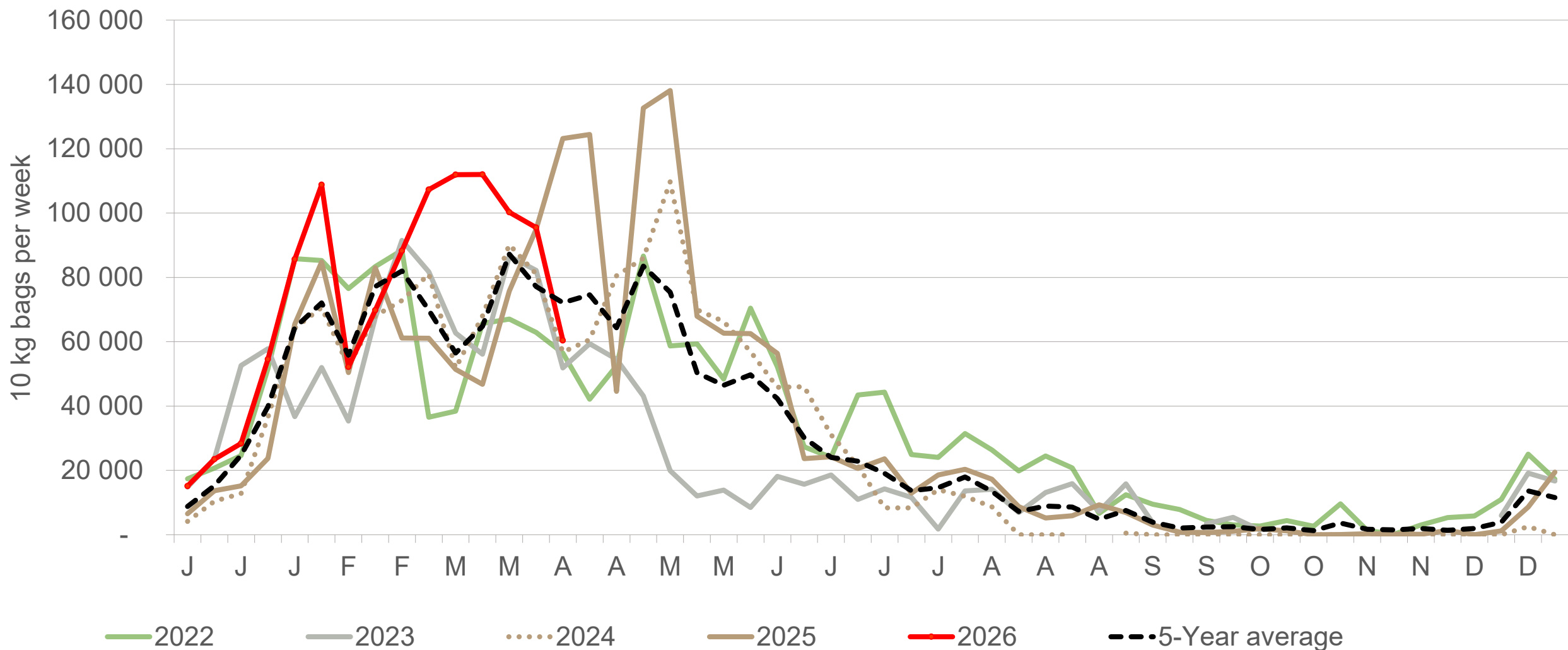
# KwaZulu-Natal: Amount of 10 kg bags per week sold on FPMs (all classes)



Sold 25% bags **more** than the first 15 weeks of 2025 and 3,875 bags **more** than the 5-year average (2021 to 2025) of the first 15 weeks of each year.

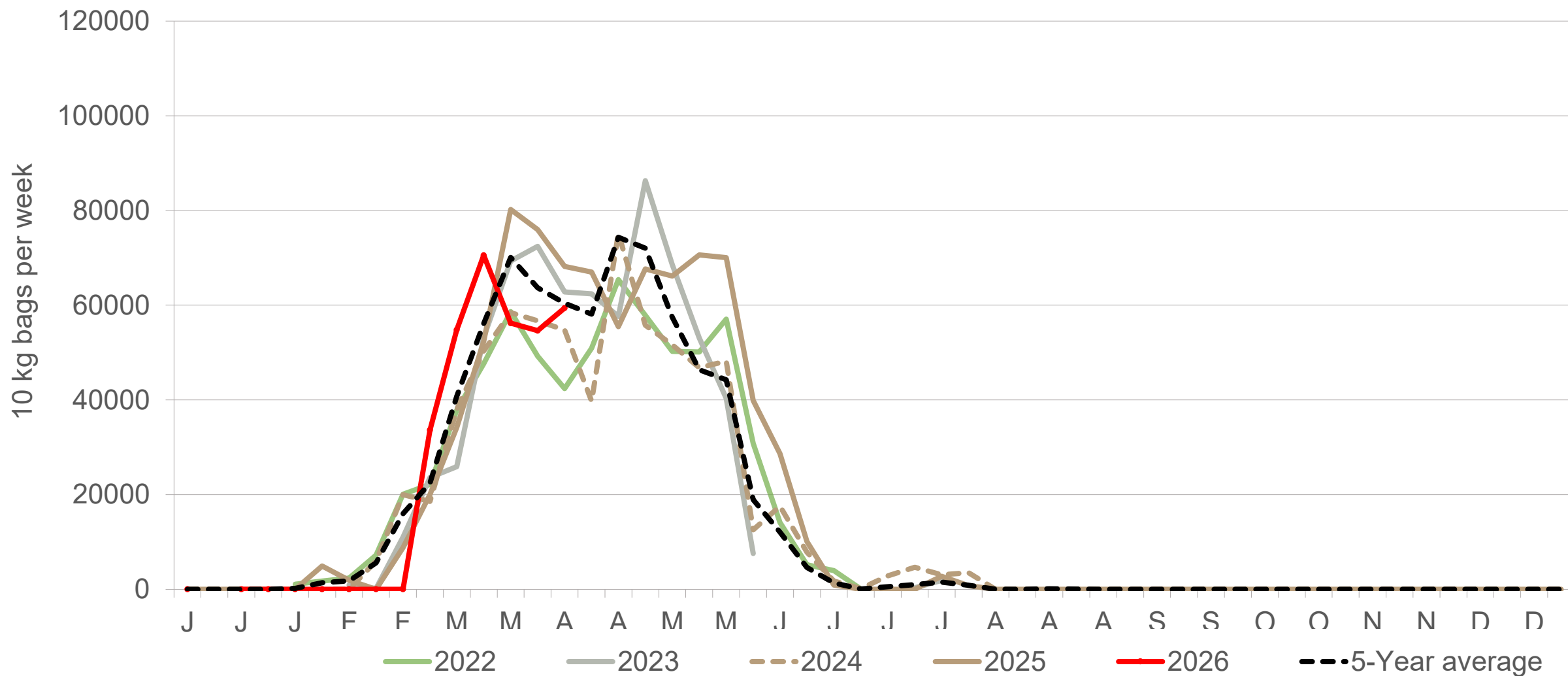
*Data disclaimer: Potatoes SA does not take responsibility for the accuracy or interpretation of company data re-purposed by 3rd parties*

# North Eastern Cape: Amount of 10 kg bags per week sold on FPMs (all classes)



Sold 30% bags **more** than the first 15 weeks of 2025 and 246,010 bags **more** than the 5-year average (2021 to 2025) of the first 15 weeks of each year.

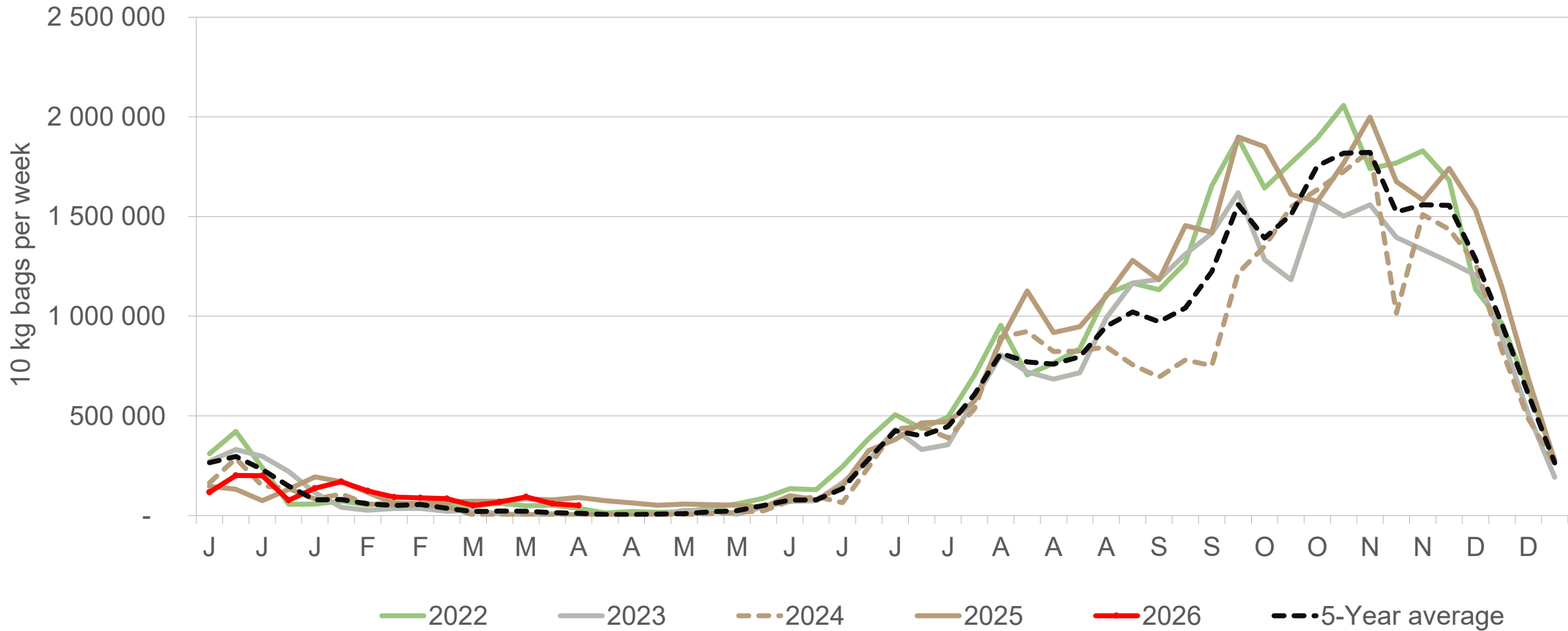
# Ceres: Amount of 10 kg bags per week sold on FPMs (all classes)



Sold 5% bags **less** than the first 3 weeks of 2025 and 9,197 bags **less** than the 5-year average (2021 to 2025) of the first 15 weeks of each year.

*Data disclaimer: Potatoes SA does not take responsibility for the accuracy or interpretation of company data re-purposed by 3rd parties*

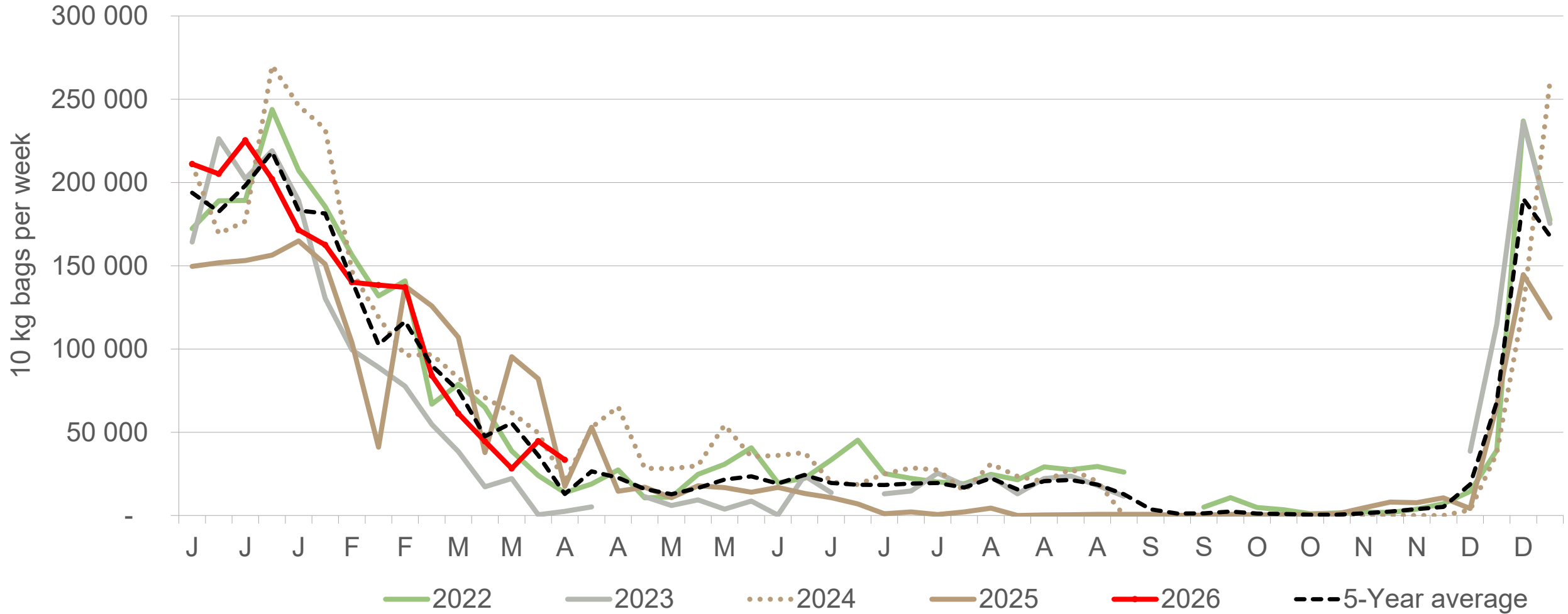
# Limpopo: Amount of 10 kg bags per week sold on FPMs (all classes)



Sold 4% bags **more** than the first 15 weeks of 2025 and 224,956 bags **more** than the 5-year average (2021 to 2025) of the first 15 weeks of each year

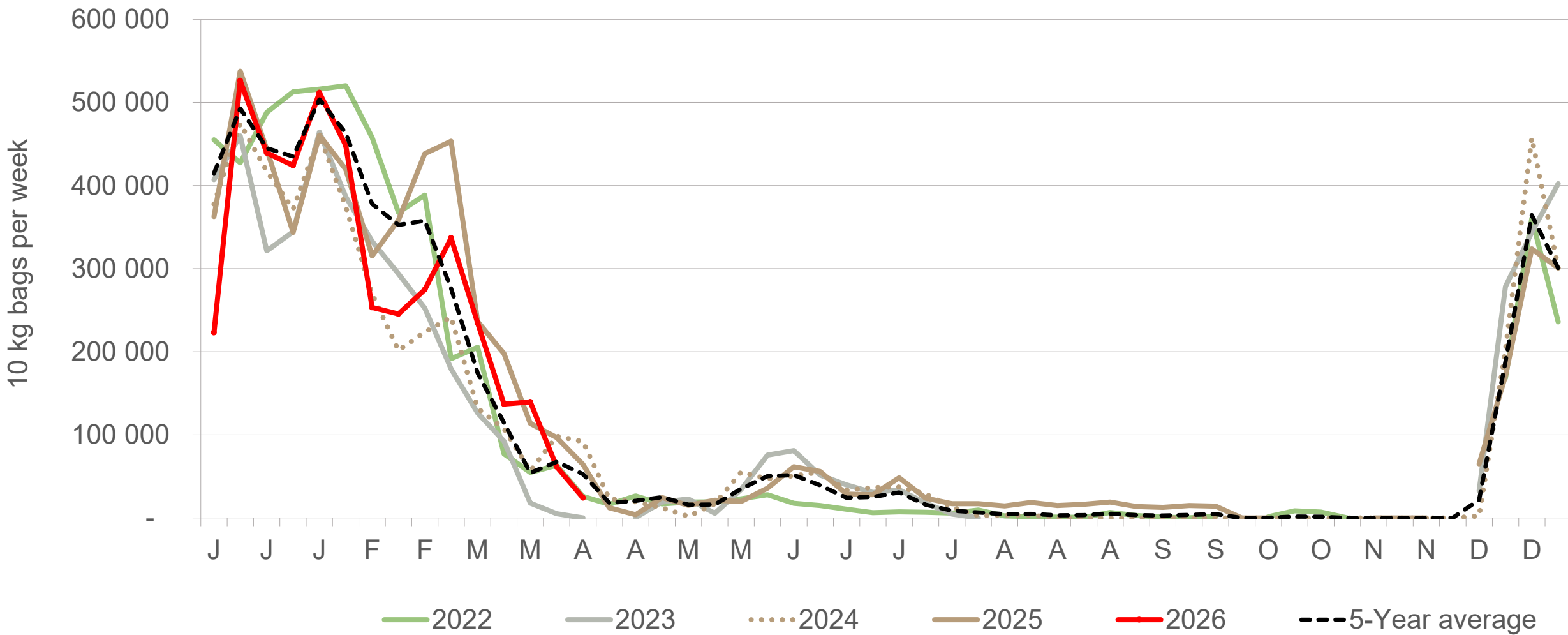
*Data disclaimer: Potatoes SA does not take responsibility for the accuracy or interpretation of company data re-purposed by 3rd parties*

# Gauteng: Amount of 10 kg bags per week sold on FPMs (all classes)



Sold 13% bags **more** than the first 15 weeks of 2025 and 54,437 bags **more** than the 5-year average (2021 to 2025) of the first 15 weeks of each year.

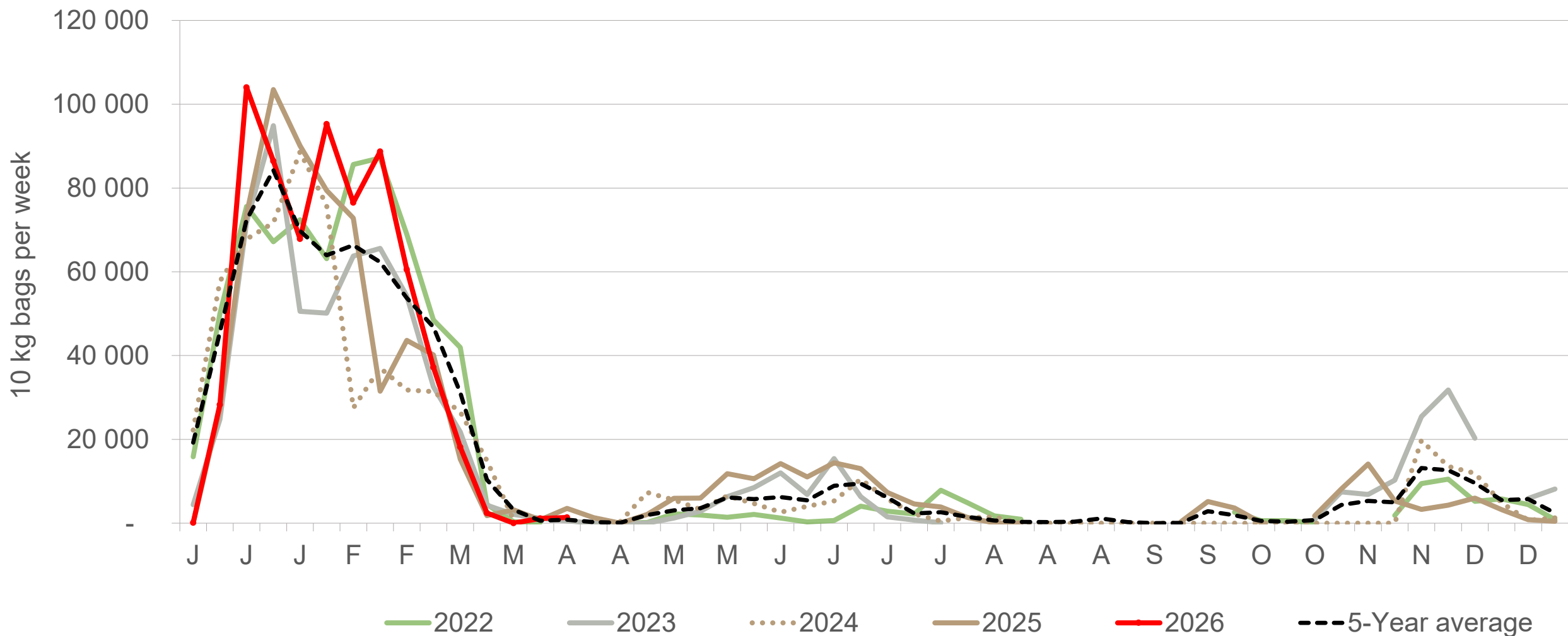
# South Western Free State: Amount of 10 kg bags per week sold on FPMs (all classes)



Sold 12% bags **less** than the first 15 weeks of 2025 and 301,991 bags **less** than the 5-year average (2021 to 2025) of the first 15 weeks of each year.

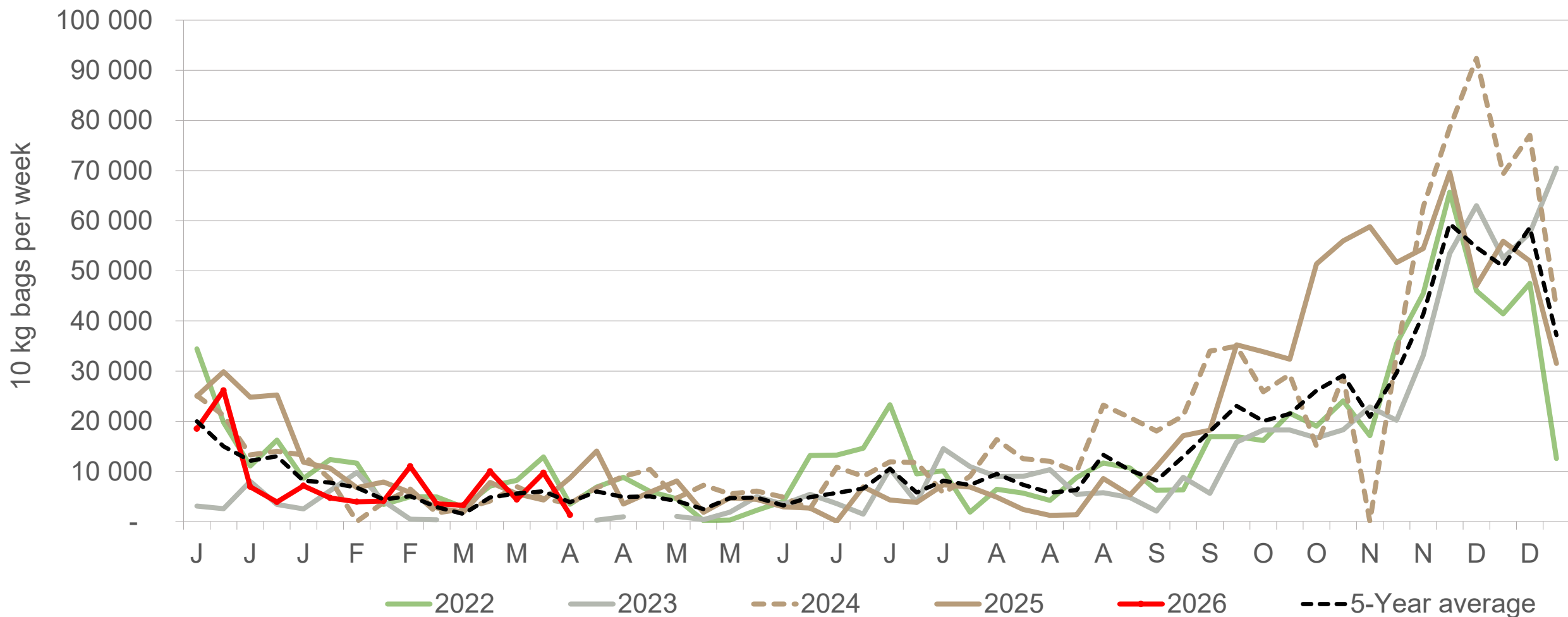
*Data disclaimer: Potatoes SA does not take responsibility for the accuracy or interpretation of company data re-purposed by 3rd parties*

# Mpumalanga: Amount of 10 kg bags per week sold on FPMs (all classes)



Sold 14% bags **more** than the first 15 weeks of 2025 and 37,519 bags **more** than the 5-year average (2021 to 2025) of the 15 weeks of each year.

# Eastern Cape: Amount of 10 kg bags per week sold on FPMs (all classes)



Sold 34% bags **less** than the first 15 weeks of 2025 and 1,490 bags **more** than the 5-year average (2021 to 2025) of the 15 weeks of each year.

*Data disclaimer: Potatoes SA does not take responsibility for the accuracy or interpretation of company data re-purposed by 3rd parties*

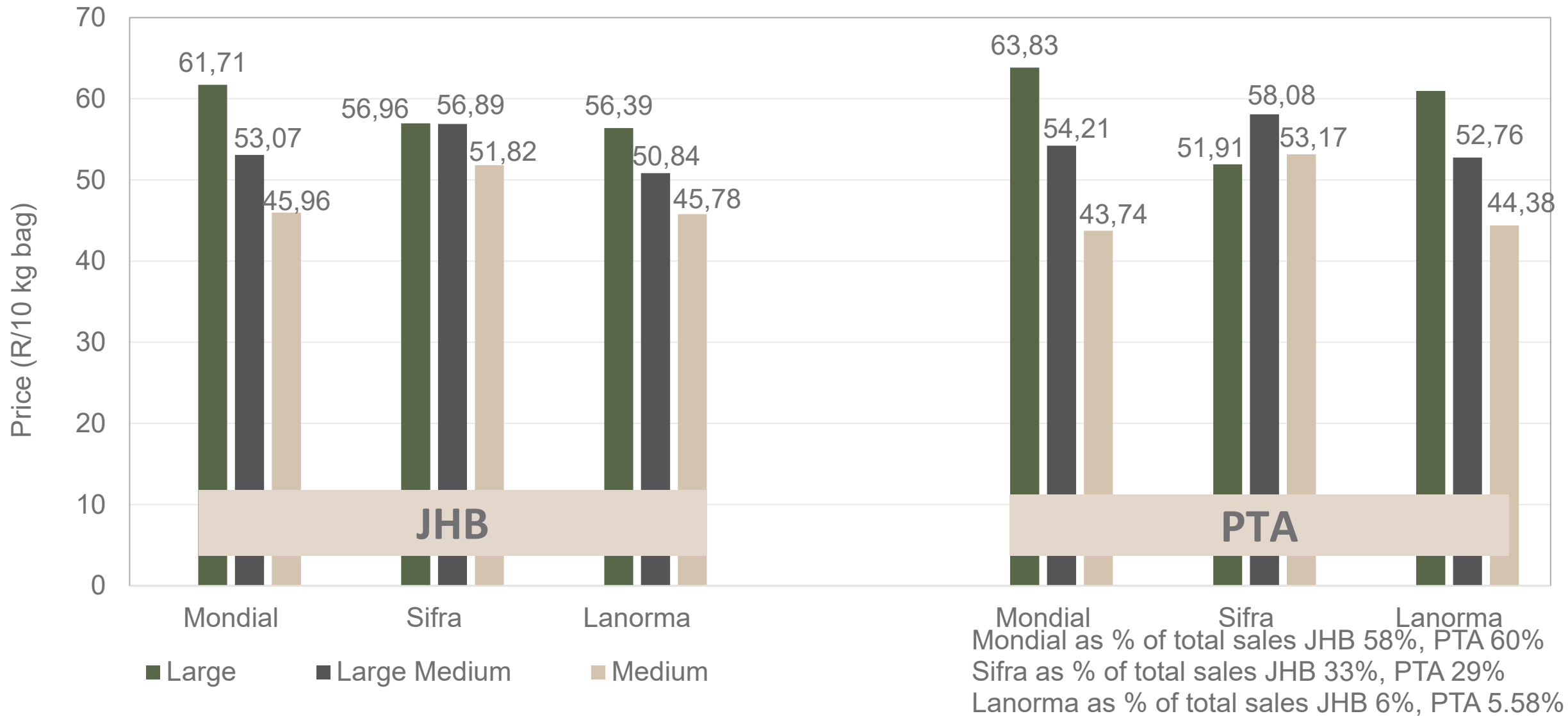
# Average weekly prices and volumes for 10 kg bags of potatoes sold on selected markets from selected production regions



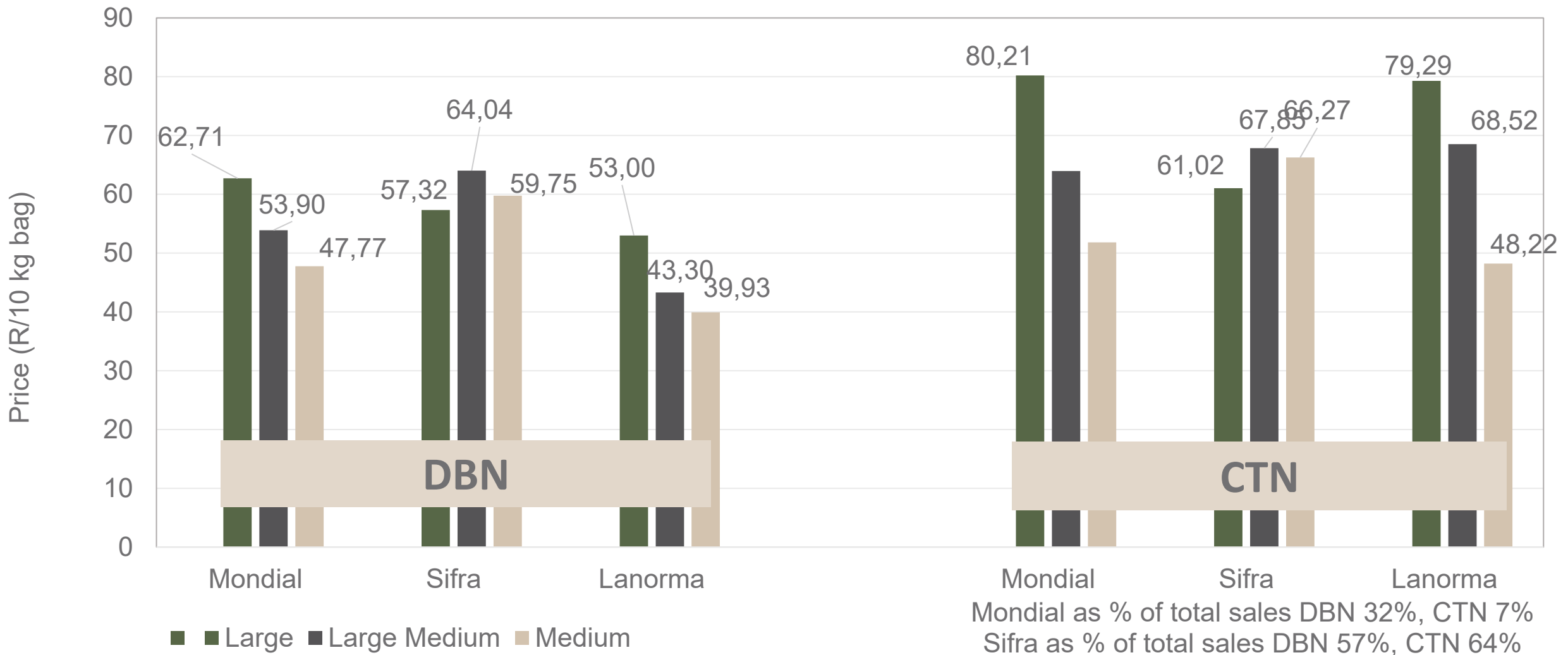
	Eastern Free State		Western Free State				North West				South Western Freestate				KwaZulu-Natal				North Eastern Cape				All Regions		
Klas & Grootte	JOH		JOH		PRE		JOH		PRE		JOH		PRE		DUR		PIE		POR		EAS		All Markets		
	Volume	Prices	Volume	Prices	Volume	Prices	Volume	Prices	Volume	Prices	Volume	Prices	Volume	Prices	Volume	Prices	Volume	Prices	Volume	Prices	Volume	Prices	Volume	Prices	
	10kg	R/10kg	10kg	R/10kg	10kg	R/10kg	10kg	R/10kg	10kg	R/10kg	10kg	R/10kg	10kg	R/10kg	10kg	R/10kg	10kg	R/10kg	10kg	R/10kg	10kg	R/10kg	10kg	R/10kg	
1L	121 467	60.17	33 951	57.36	19 184	54.01	15 583	57.22	7 559	57.80	4 934	33.92	82	31.71	4 995	63.44	1 784	60.13	2 460	61.52	2 955	64.29	389 972	59.07	
1L/M	98 673	52.05	60 944	53.54	20 890	56.26	34 552	55.56	13 229	59.48	1 264	49.96	-	-	6 445	52.13	2 506	57.14	7 111	56.86	3 102	60.50	470 046	54.52	
1M	52 407	44.42	59 520	48.84	18 198	51.23	29 944	51.54	6 991	55.00	870	42.18	17	40.00	4 028	48.42	4 805	44.75	6 784	59.93	6 485	57.90	372 139	50.08	
1S	17 249	25.56	12 894	28.02	426	29.88	12 320	30.25	2 759	34.82	1 133	19.76	-	-	-	-	883	21.66	1 638	51.62	2 150	57.70	108 408	30.31	
1S/M	12 695	33.16	25 366	36.29	4 291	40.28	17 570	38.40	5 821	40.44	2 208	28.32	-	-	291	26.03	-	-	220	50.00	330	60.78	134 803	39.06	
1XL	3 553	64.58	-	-	-	-	-	-	-	-	-	-	-	-	-	-	-	-	-	-	-	-	5 325	61.82	
1XS	3 416	19.33	3 140	24.26	-	-	5 990	36.12	-	-	703	11.36	-	-	-	-	-	-	-	-	-	-	15 306	27.17	
1XXS	-	-	96	5.00	-	-	14	50.00	-	-	-	-	-	-	-	-	-	-	-	-	-	-	288	29.14	
2L	38 245	49.93	4 881	45.98	7 427	47.78	1 220	48.06	1 092	49.96	714	50.88	-	-	254	55.43	10	60.00	770	59.29	1 930	56.44	124 222	51.00	
2L/M	17 830	43.74	7 422	47.30	8 684	49.30	2 289	44.54	1 253	50.32	2 268	38.44	-	-	1 107	44.18	623	41.72	1 100	55.00	1 065	47.46	111 908	46.26	
2M	15 607	35.85	9 619	36.18	6 081	44.01	1 515	36.99	521	46.35	2 982	35.97	-	-	1 987	34.28	1 806	33.89	2 588	49.73	1 818	55.07	104 212	38.65	
2S	2 041	22.80	1 754	22.08	1 171	27.92	112	25.13	110	30.82	220	11.55	-	-	-	-	3	17.67	414	45.41	1 115	50.92	26 332	25.49	
2S/M	3 712	21.86	2 994	30.50	2 062	35.85	607	30.92	151	23.41	440	27.82	-	-	131	24.99	-	-	-	-	-	-	25 148	27.09	
2XL	-	-	-	-	-	-	-	-	-	-	-	-	-	-	-	-	-	-	-	-	-	-	89	38.00	
2XS	-	-	-	-	-	-	66	24.77	-	-	-	-	-	-	-	-	-	-	-	-	-	-	2 425	10.83	
2XXS	-	-	-	-	-	-	-	-	-	-	-	-	-	-	-	-	-	-	-	-	-	-	-	-	-
3L	10 443	40.69	2 883	40.55	2 246	42.01	4	40.00	111	35.00	330	25.11	-	-	429	40.85	-	-	-	-	220	45.07	55 116	39.96	
3L/M	14 507	32.64	6 439	31.36	1 970	42.86	5 060	36.95	1 210	38.65	220	25.00	-	-	-	-	-	-	-	-	550	50.01	64 647	35.97	
3M	16 034	26.87	7 621	25.60	3 744	30.98	4 436	33.18	1 983	31.42	426	20.16	-	-	94	40.00	-	-	2 125	37.92	1 842	41.09	78 532	29.53	
3S/M	972	24.05	-	-	20	35.00	440	20.00	342	19.74	-	-	-	-	-	-	-	-	-	-	330	40.05	11 649	24.67	
3XS	-	-	-	-	-	-	-	-	-	-	-	-	-	-	-	-	-	-	-	-	-	-	-	-	-
3XXS	-	-	-	-	-	-	-	-	-	-	-	-	-	-	-	-	-	-	-	-	-	-	-	-	-
4L	-	-	-	-	-	-	-	-	-	-	-	-	-	-	-	-	-	-	-	-	-	-	3 677	38.14	
4L/M	-	-	-	-	-	-	-	-	-	-	-	-	-	-	-	-	-	-	-	-	-	-	2 683	30.74	
4M	-	-	-	380	16.42	-	-	-	-	-	-	-	-	-	-	-	-	-	90	30.00	-	-	5 124	24.43	
4S	-	-	-	-	-	-	-	-	-	-	-	-	-	-	-	-	-	-	-	-	-	-	80	5.19	
4S/M	-	-	-	-	-	-	-	-	-	-	-	-	-	-	-	-	-	-	-	-	-	-	492	14.80	
Total	429 071	48.16	239 524	46.11	97 389	49.31	131 722	47.09	44 307	50.95	18 716	33.56	99	33.13	19 761	51.17	12 420	46.09	27 010	53.29	24 032	55.90	2 140 164	47.51	

Data disclaimer: Potatoes SA does not take responsibility for the accuracy or interpretation of company data re-purposed by 3rd parties

# PTA & JHB markets: Average Prices - Different Sizes (only 10 kg bags)



# DBN & CTN markets: Average Prices - Different Sizes (only 10 kg bags)




Mondial as % of total sales DBN 32%, CTN 7%  
 Sifra as % of total sales DBN 57%, CTN 64%  
 Lanorma as % of total sales DBN 2.83%, CTN 16%

# Thank you for your time


Feel free to contact us

 [Lebo@potatoes.co.za](mailto:Lebo@potatoes.co.za)

[Jodie@potatoes.co.za](mailto:Jodie@potatoes.co.za)

 +27 (0)12 349 1906

 6 De Havilland Crescent  
Persequor Techno Park  
Persequor Park  
Pretoria

 [www.potatoes.co.za](http://www.potatoes.co.za)



Potatoes  
Aartappels SA