



Weekly Market Information

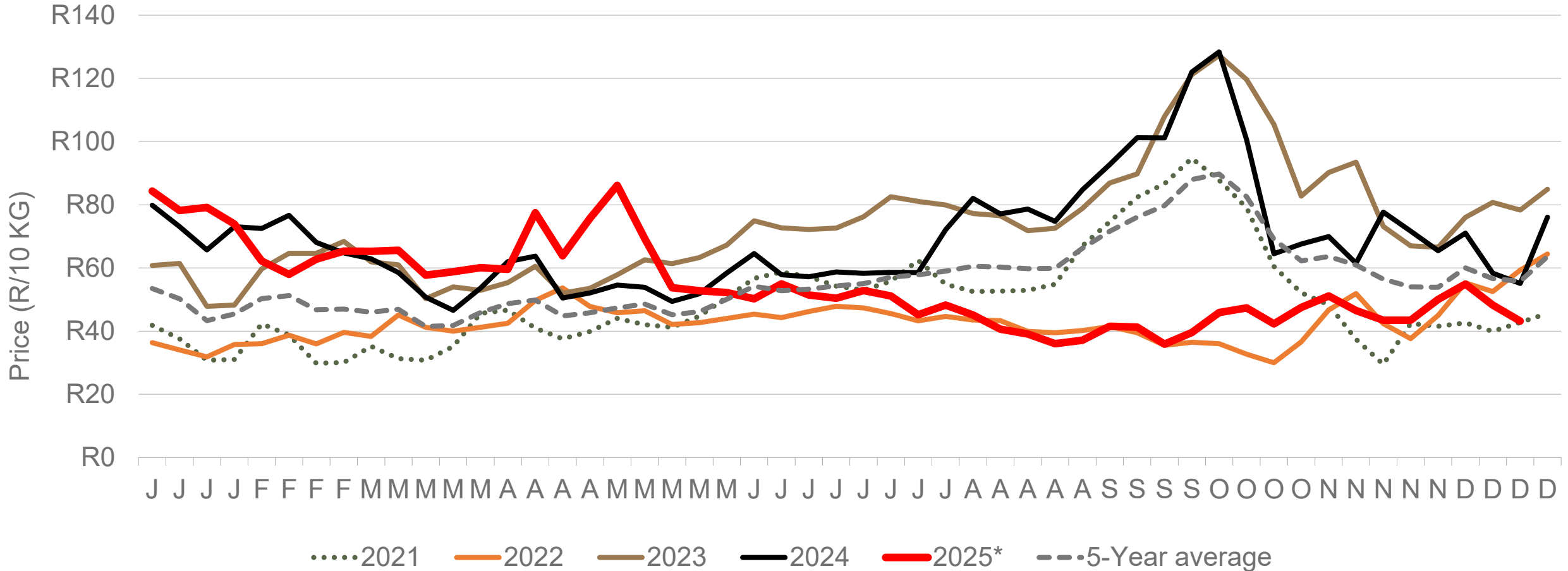
19 December 2025



**Potatoes
Aartappels SA**

www.potatoes.co.za

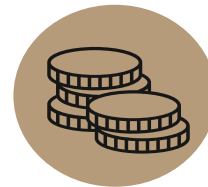
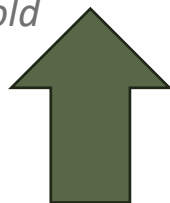
Average weekly price – all markets & all classes



Number of bags sold

2%

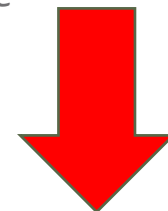
(Week on Week)



Average weekly price

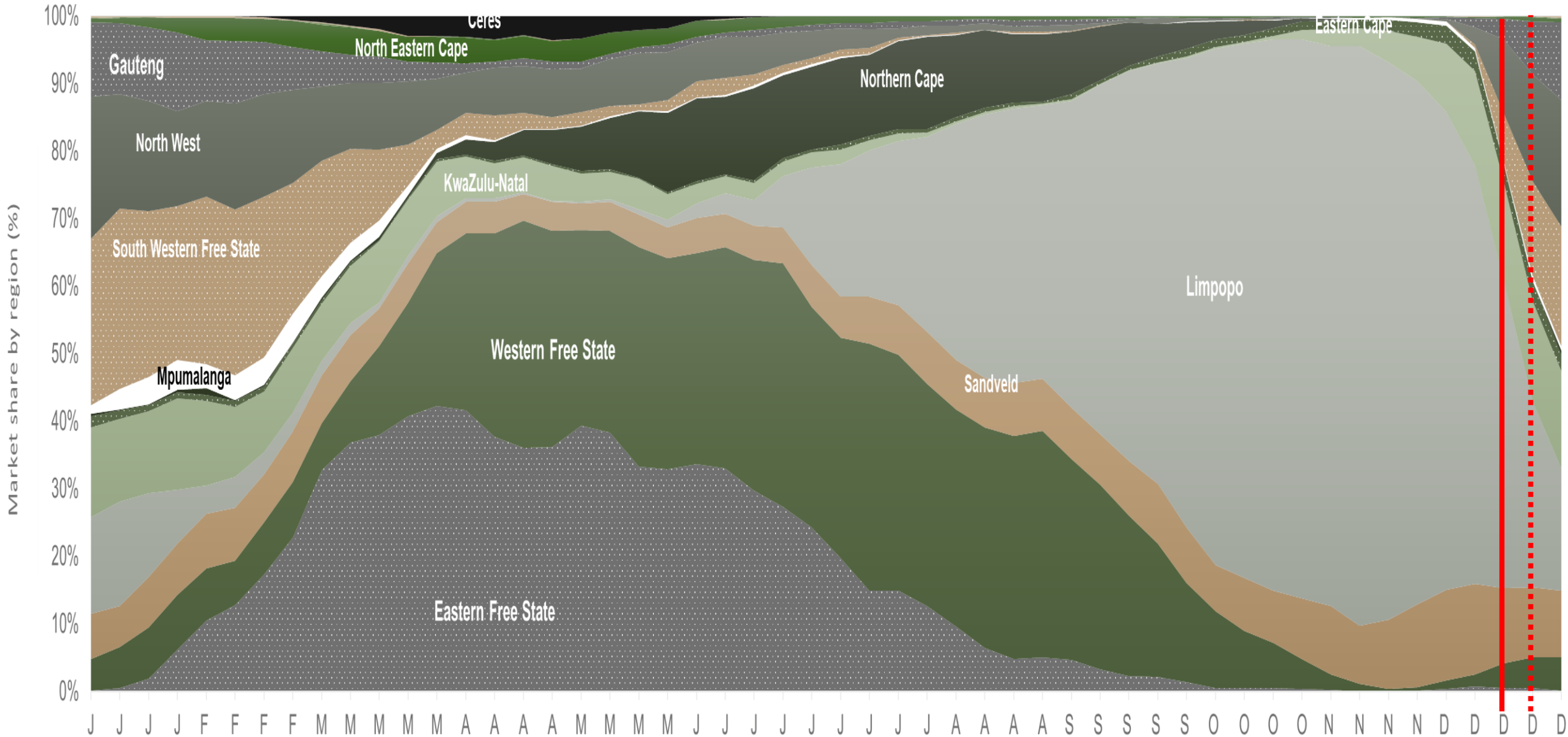
10%

(Week on week)



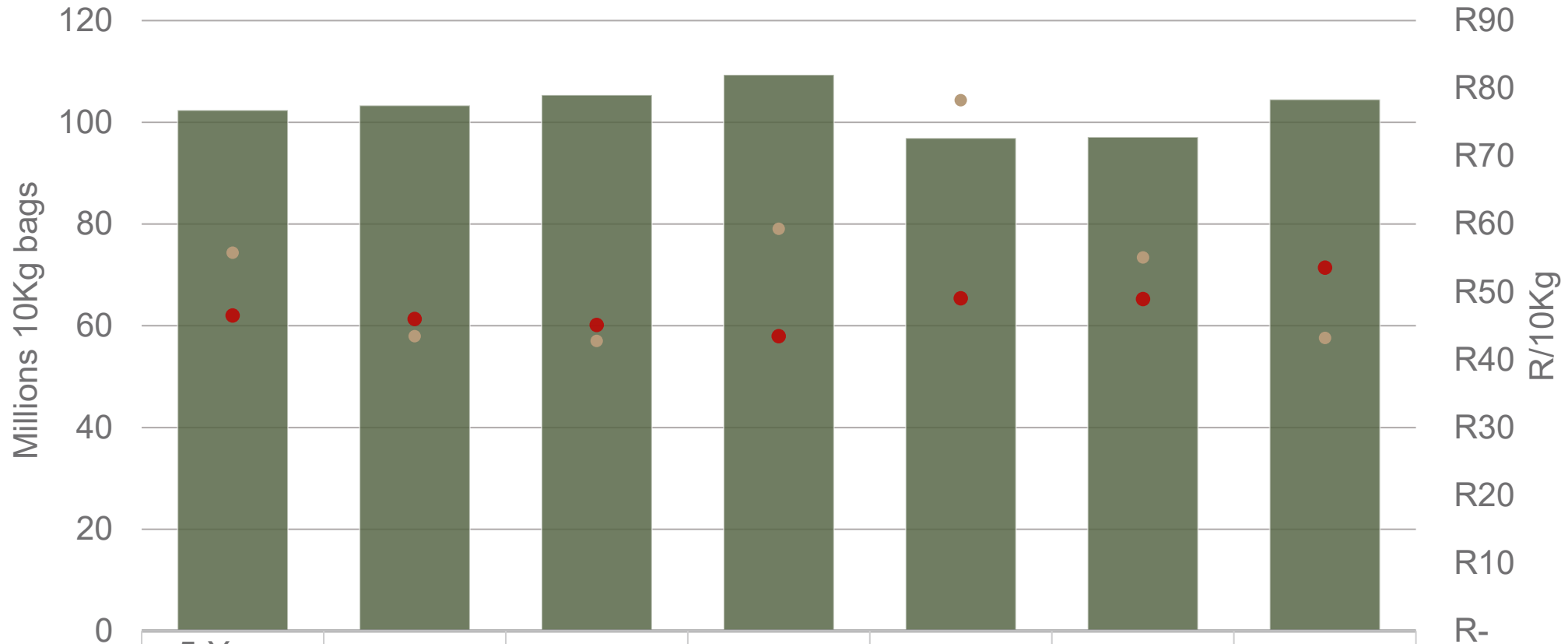
Data disclaimer: Potatoes SA does not take responsibility for the accuracy or interpretation of company data re-purposed by 3rd parties

Market share of regions on fresh produce markets 2019-2024



Data disclaimer: Potatoes SA does not take responsibility for the accuracy or interpretation of company data re-purposed by 3rd parties

Cumulative total number of 10 kg bags sold on markets

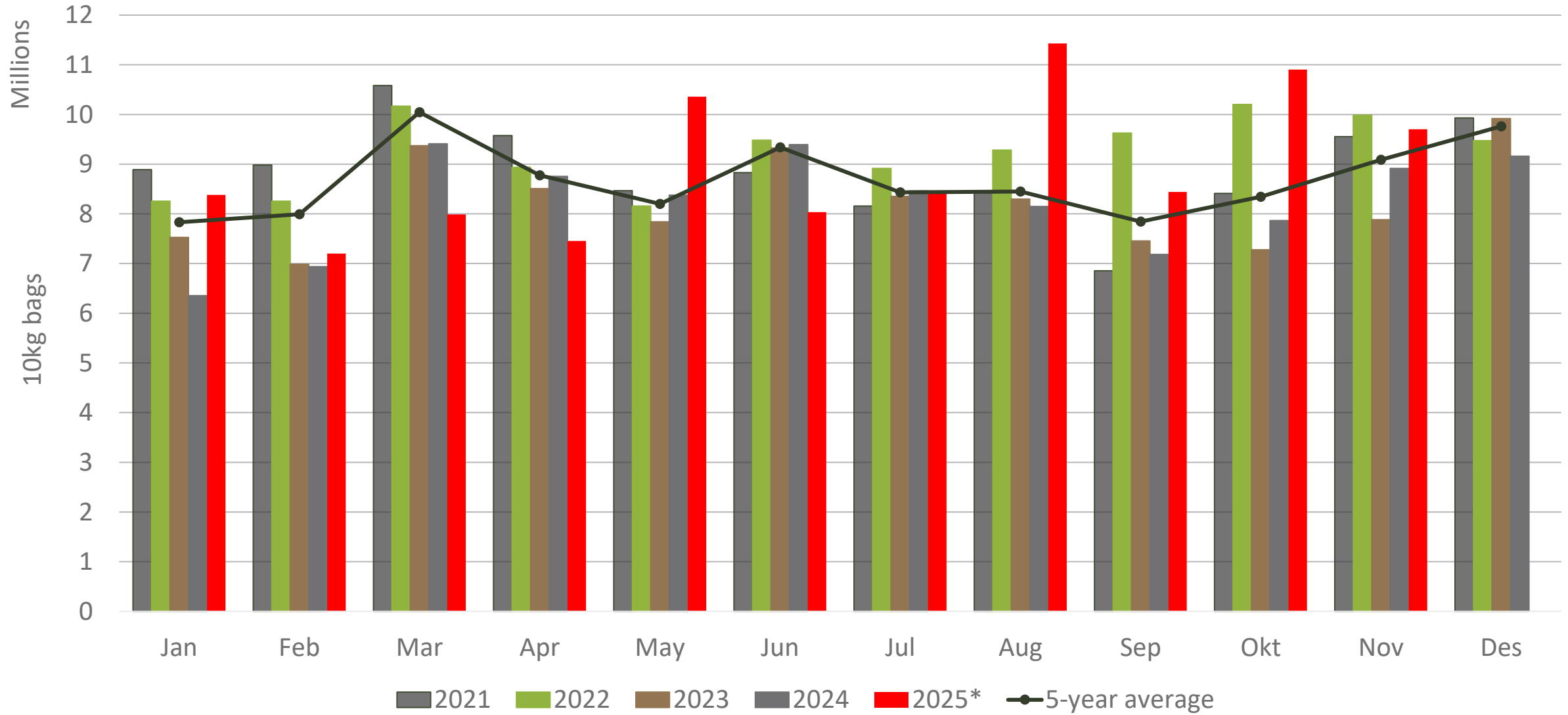


| | 5-Year average | 2020 | 2021 | 2022 | 2023 | 2024 | 2025* |
|---------------------------------|----------------|-------------|-------------|-------------|------------|------------|-------------|
| ■ Number of bags sold (To Date) | 102 412 861 | 103 302 216 | 105 371 735 | 109 352 077 | 96 921 311 | 97 116 968 | 104 489 221 |
| ● Average price (To Date) | R46,51 | R46,01 | R45,11 | R43,46 | R49,04 | R48,94 | R53,58 |
| ● Current Weeks Price | R55,78 | R43,47 | R42,77 | R59,30 | R78,28 | R55,07 | R43,22 |

Sold 2,076,360 bags **more** than the **5-year average** (2020 to 2024) of the first 51 weeks of 2025

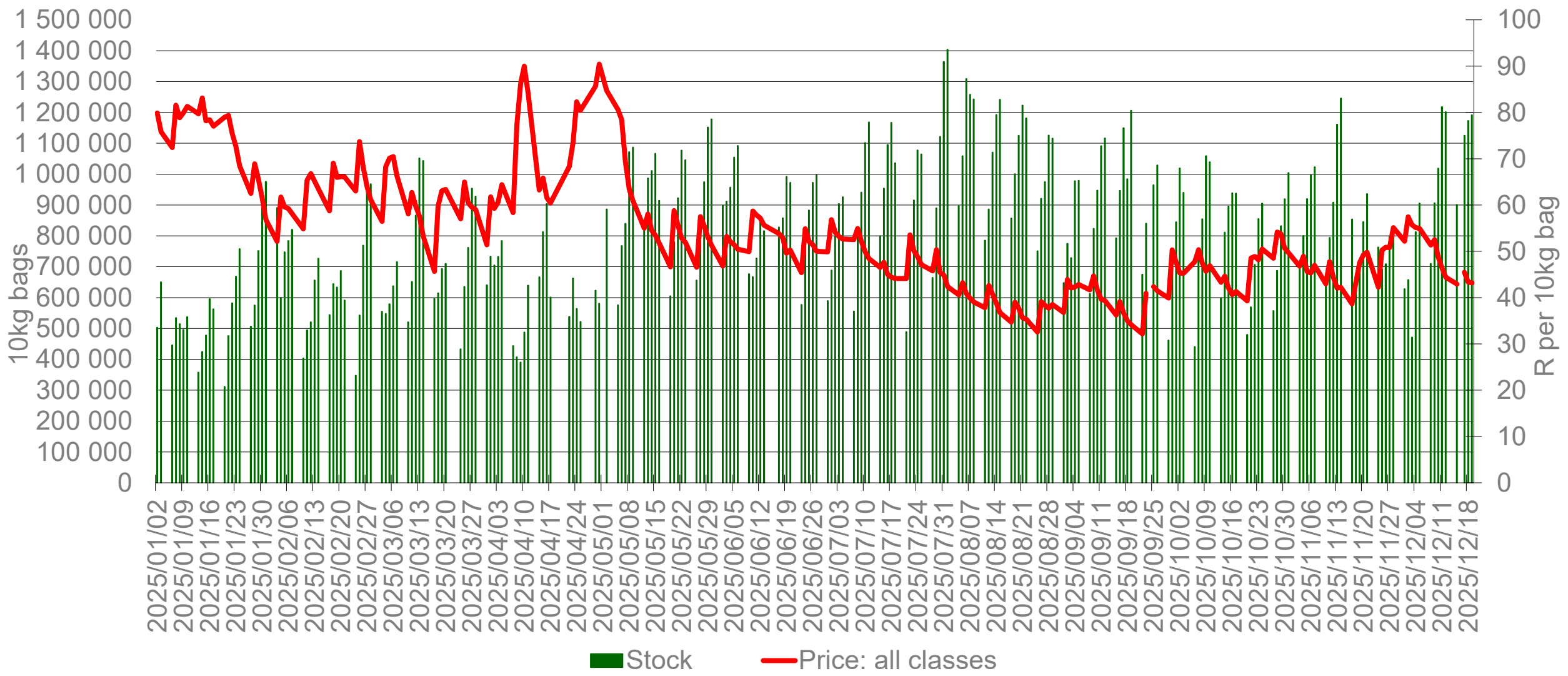
Data disclaimer: Potatoes SA does not take responsibility for the accuracy or interpretation of company data re-purposed by 3rd parties

Monthly sales volumes on markets: Potatoes



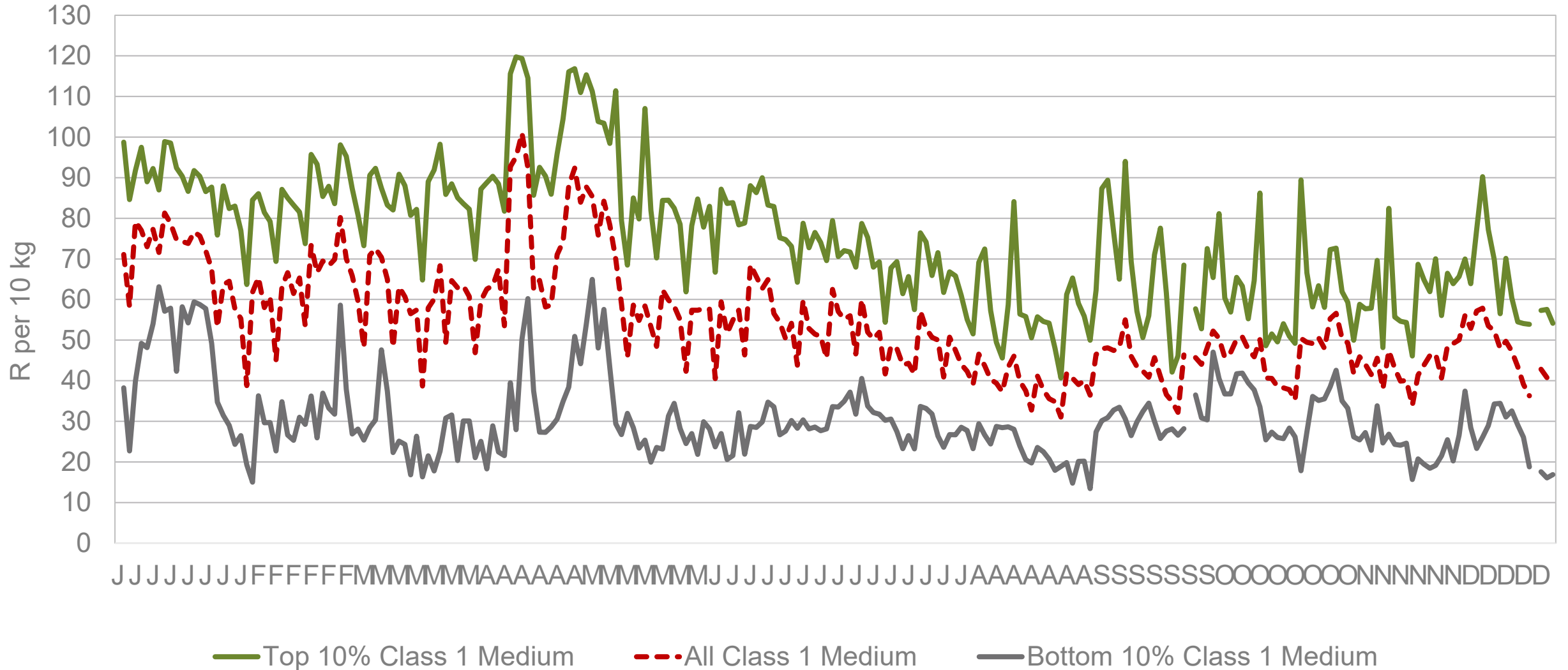
Data disclaimer: Potatoes SA does not take responsibility for the accuracy or interpretation of company data re-purposed by 3rd parties

RSA daily price versus daily available stocks (all classes & all sizes)



Data disclaimer: Potatoes SA does not take responsibility for the accuracy or interpretation of company data re-purposed by 3rd parties

JHB market daily : Top 10% versus bottom 10% prices – Class 1 Medium (since January 2025)



Data disclaimer: Potatoes SA does not take responsibility for the accuracy or interpretation of company data re-purposed by 3rd parties

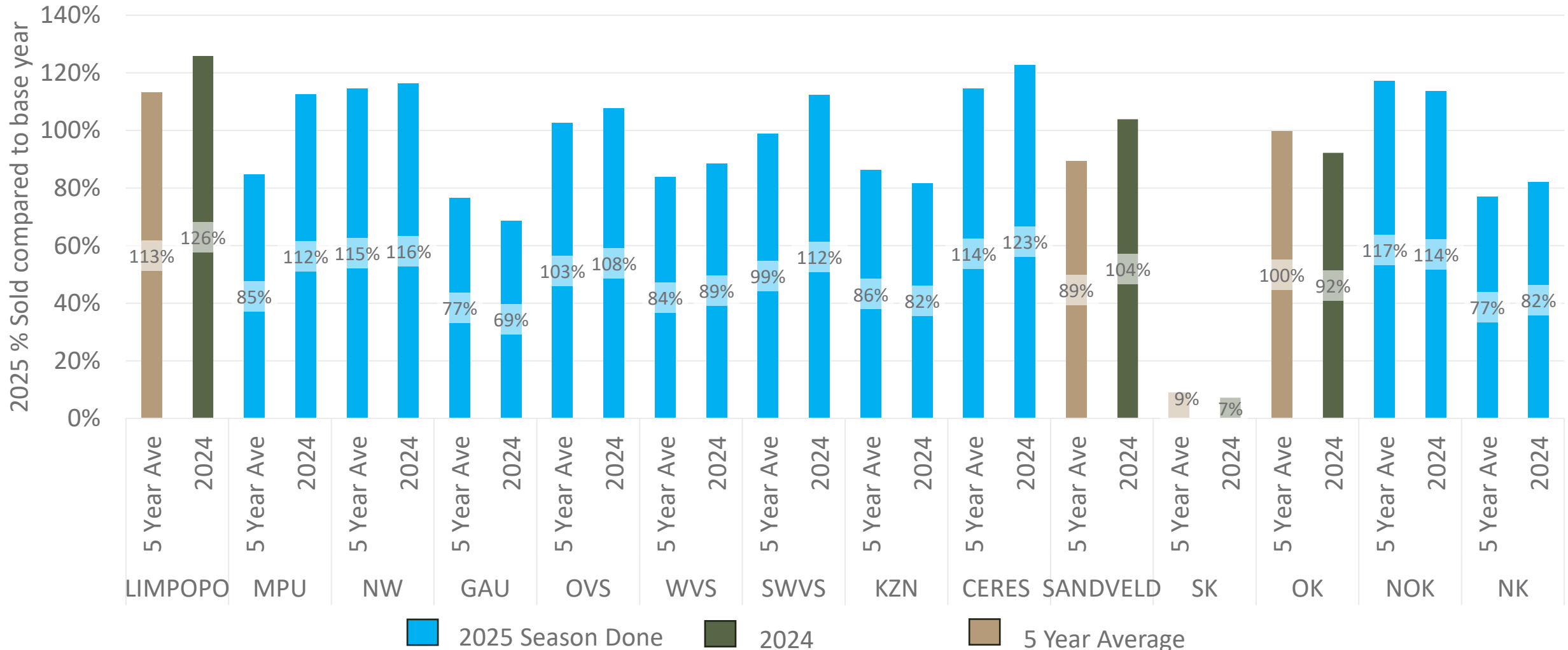
FPM Sales pace comparison per region

2025 compared to 5-year average and 2024



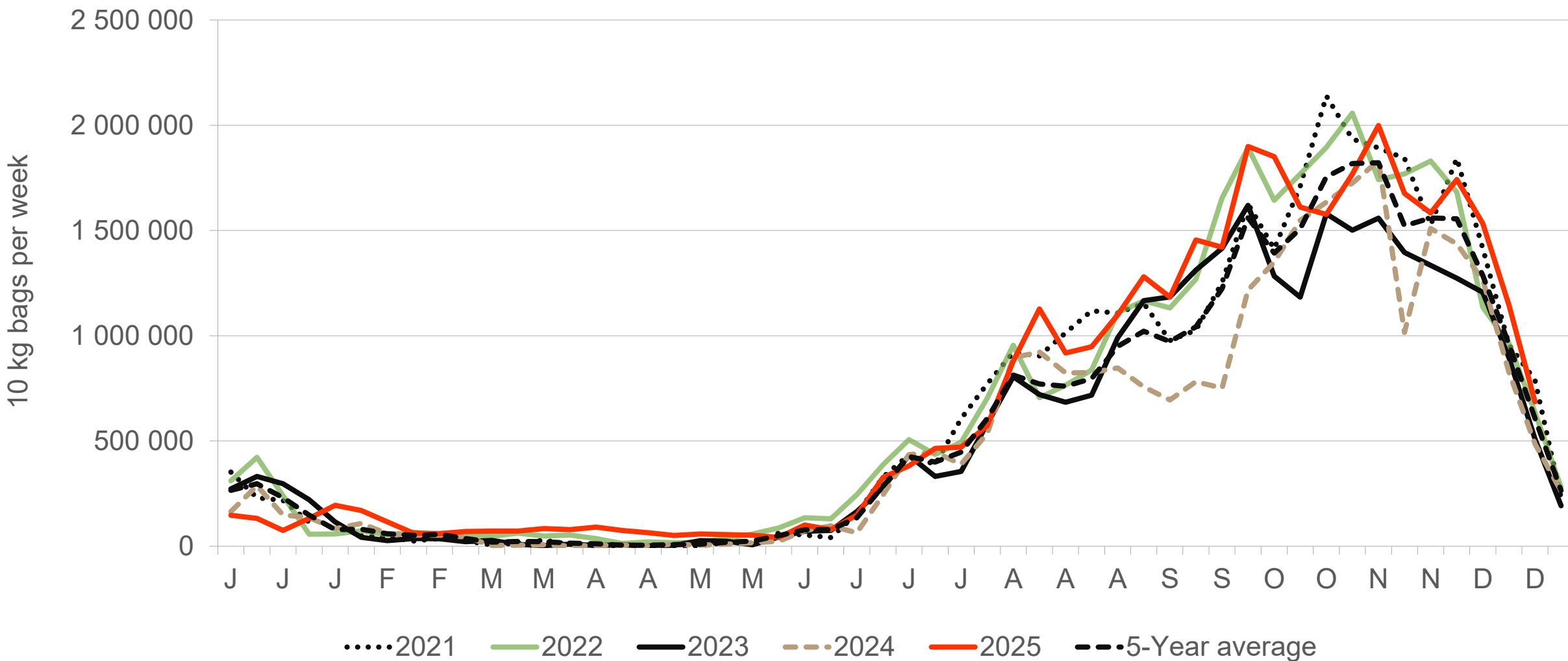
The *FPM Sales pace* compares the current year's cumulative volumes sold on the FPM with the previous year and the five-year average. Differences in these trends reflect variations in hectares planted, regional weather conditions, yield performance, and market timing. Blue indicates regions that are done delivering for this season. Seasons are based on calendar year.

Note: This comparison is based on total volumes sold, not on hectares planted



Data disclaimer: Potatoes SA does not take responsibility for the accuracy or interpretation of company data re-purposed by 3rd parties

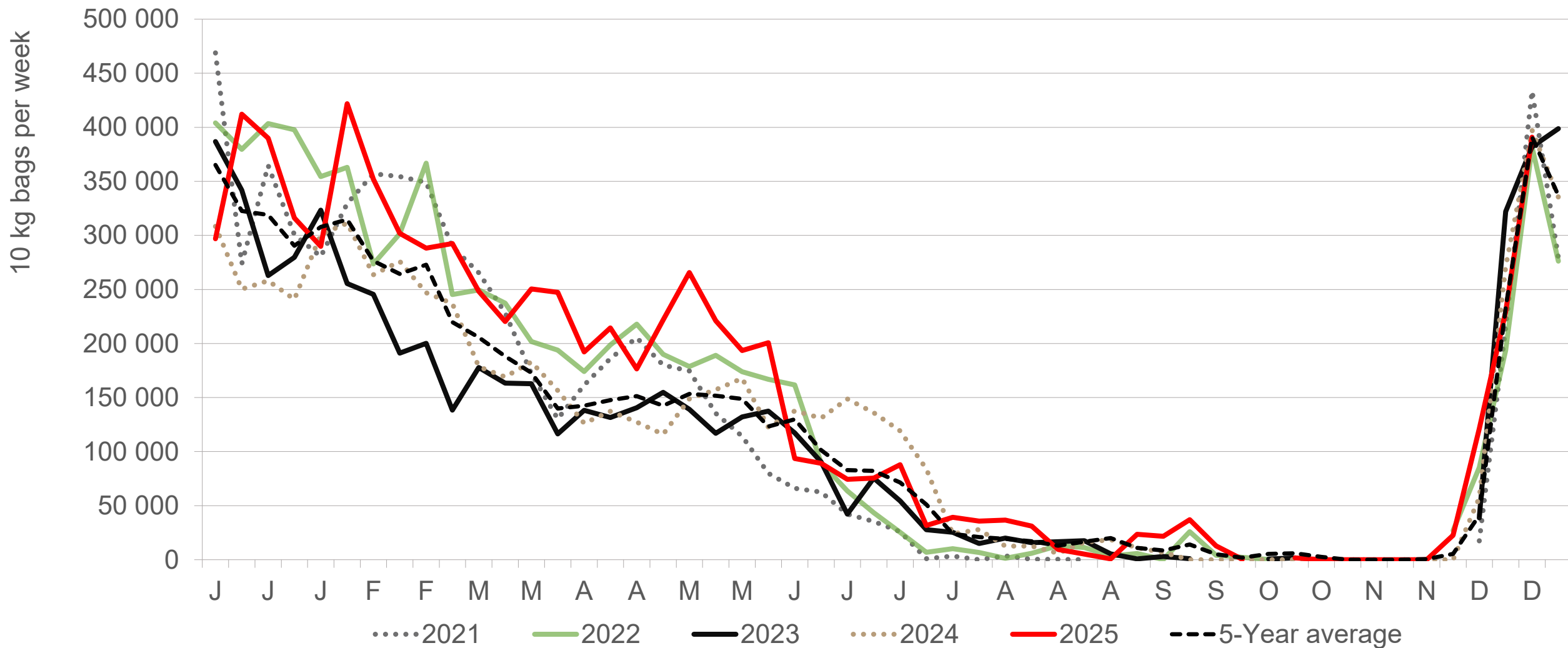
Limpopo: Amount of 10 kg bags per week sold on FPMs (all classes)



Sold 27% bags **more** than the first 51 weeks of 2024 and 4,207,753 bags **more** than the 5-year average (2020 to 2024) of the first 51 weeks of each year

Data disclaimer: Potatoes SA does not take responsibility for the accuracy or interpretation of company data re-purposed by 3rd parties

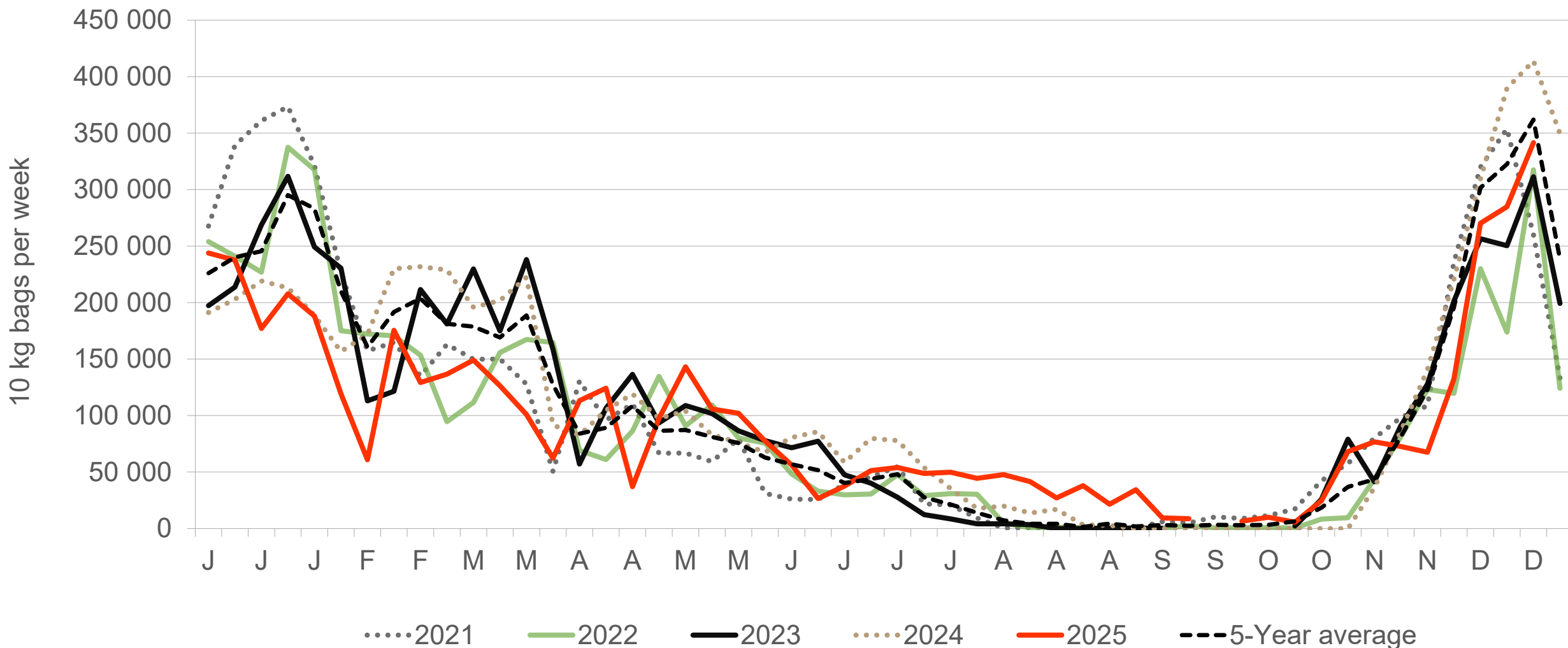
North-West: Amount of 10 kg bags per week sold on FPMs (all classes)



Sold 23% bags **more** than the first 51 weeks of 2024 and 1,290,053 **more** than the 5-year average (2020 to 2024) of the first 51 weeks of each year.

Data disclaimer: Potatoes SA does not take responsibility for the accuracy or interpretation of company data re-purposed by 3rd parties

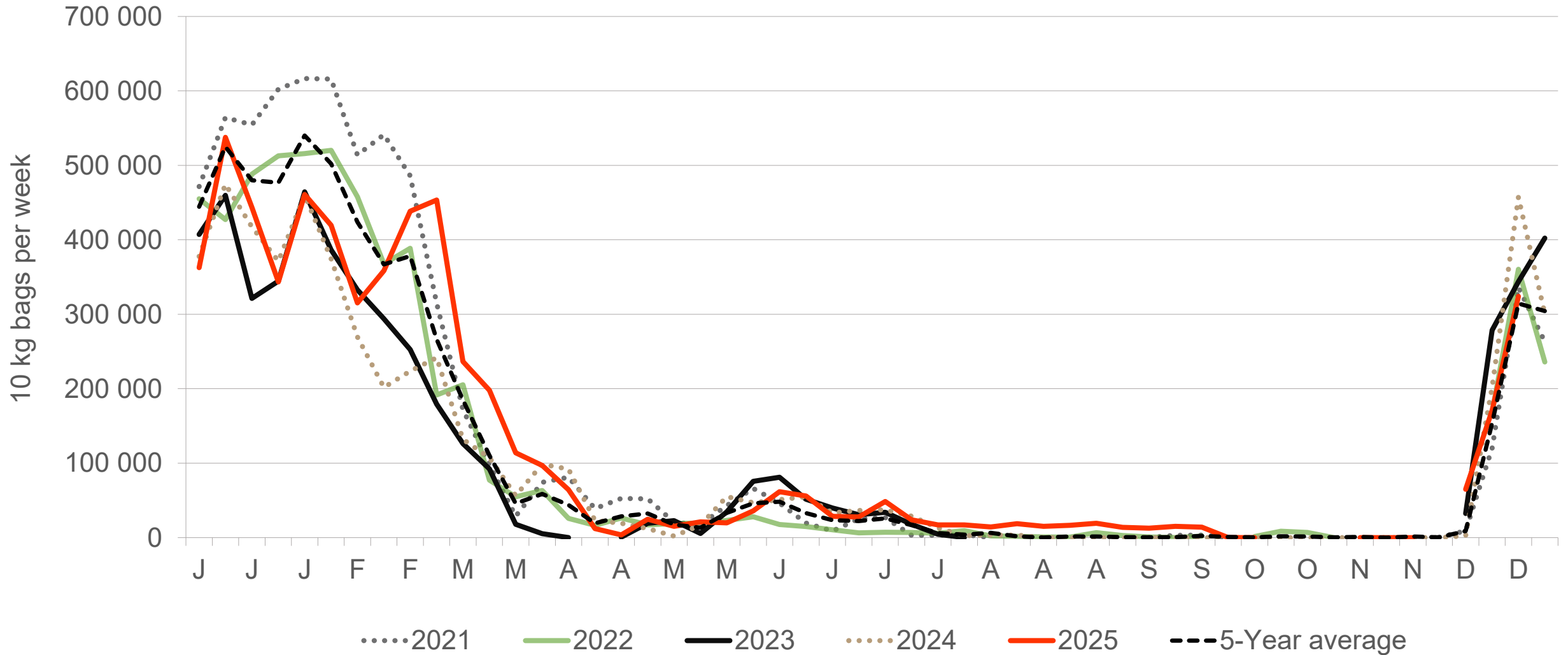
KwaZulu-Natal: Amount of 10 kg bags per week sold on FPMs (all classes)



Sold 13.33% bags **less** than the first 51 weeks of 2024 and 536,449 bags **less** than the 5-year average (2020 to 2024) of the first 51 weeks of each year.

Data disclaimer: Potatoes SA does not take responsibility for the accuracy or interpretation of company data re-purposed by 3rd parties

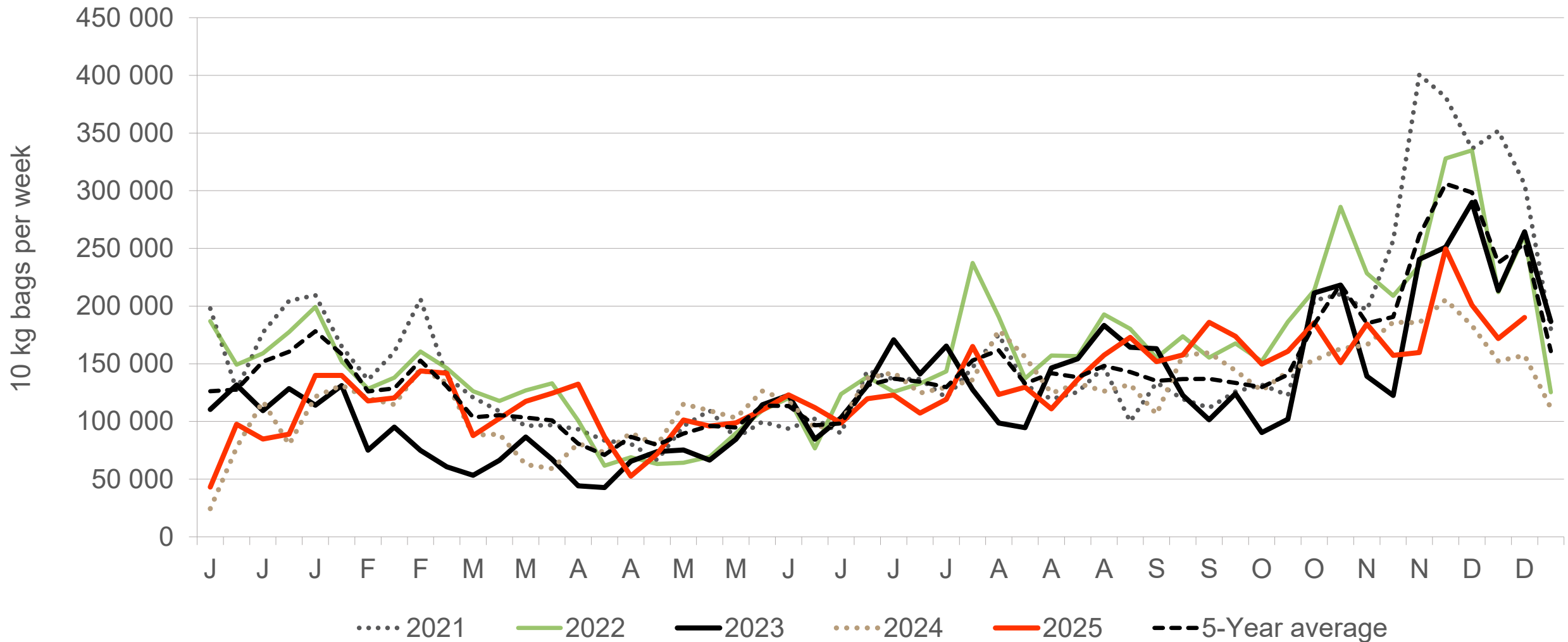
South Western Free State: Amount of 10 kg bags per week sold on FPMs (all classes)



Sold 19.10% bags **more** than the first 51 weeks of 2024 and 238,853 bags **more** than the 5-year average (2020 to 2024) of the first 51 weeks of each year.

Data disclaimer: Potatoes SA does not take responsibility for the accuracy or interpretation of company data re-purposed by 3rd parties

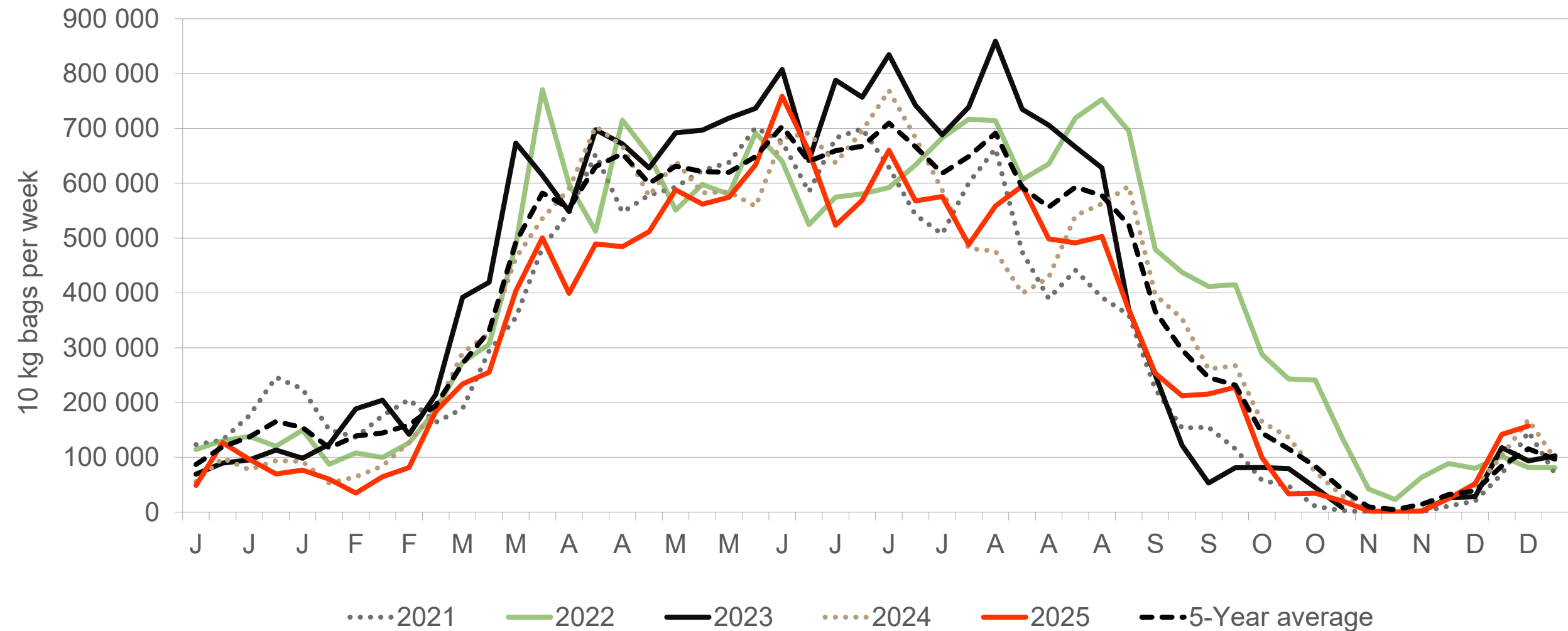
Sandveld: Amount of 10 kg bags per week sold on FPMs (all classes)



Sold 6% bags **more** than the first 51 weeks of 2024 and 646,126 bags **less** than the 5-year average (2020 to 2024) of the first 51 weeks of each year.

Data disclaimer: Potatoes SA does not take responsibility for the accuracy or interpretation of company data re-purposed by 3rd parties

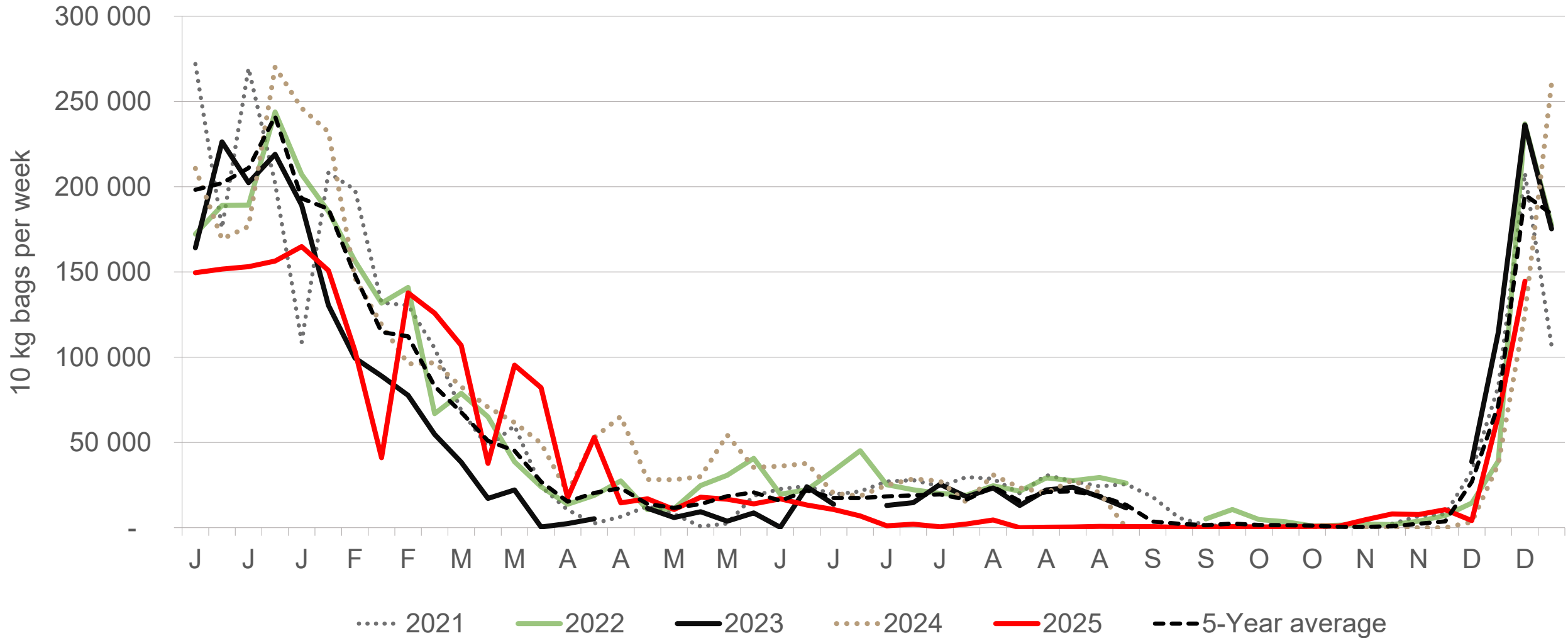
Western Free State : Amount of 10 kg bags per week sold on FPMs (all classes)



Sold 11% bags **less** than the first 51 weeks of 2024 and 2,954,325 bags **less** than the 5-year average (2020 to 2024) of the first 51 weeks of each year.

Data disclaimer: Potatoes SA does not take responsibility for the accuracy or interpretation of company data re-purposed by 3rd parties

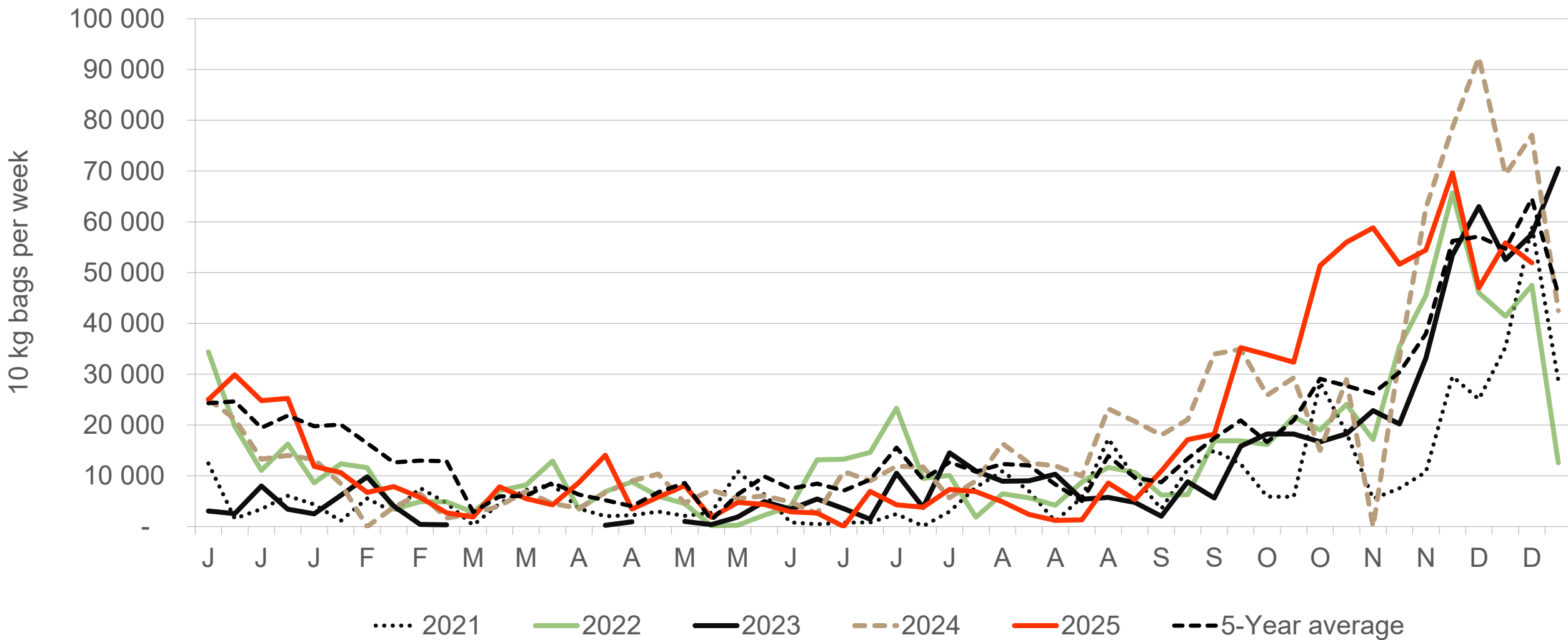
Gauteng: Amount of 10 kg bags per week sold on FPMs (all classes)



Sold 25% bags **less** than the first 51 weeks of 2024 and 466,036 bags **less** than the 5-year average (2020 to 2024) of the first 51 weeks of each year.

Data disclaimer: Potatoes SA does not take responsibility for the accuracy or interpretation of company data re-purposed by 3rd parties

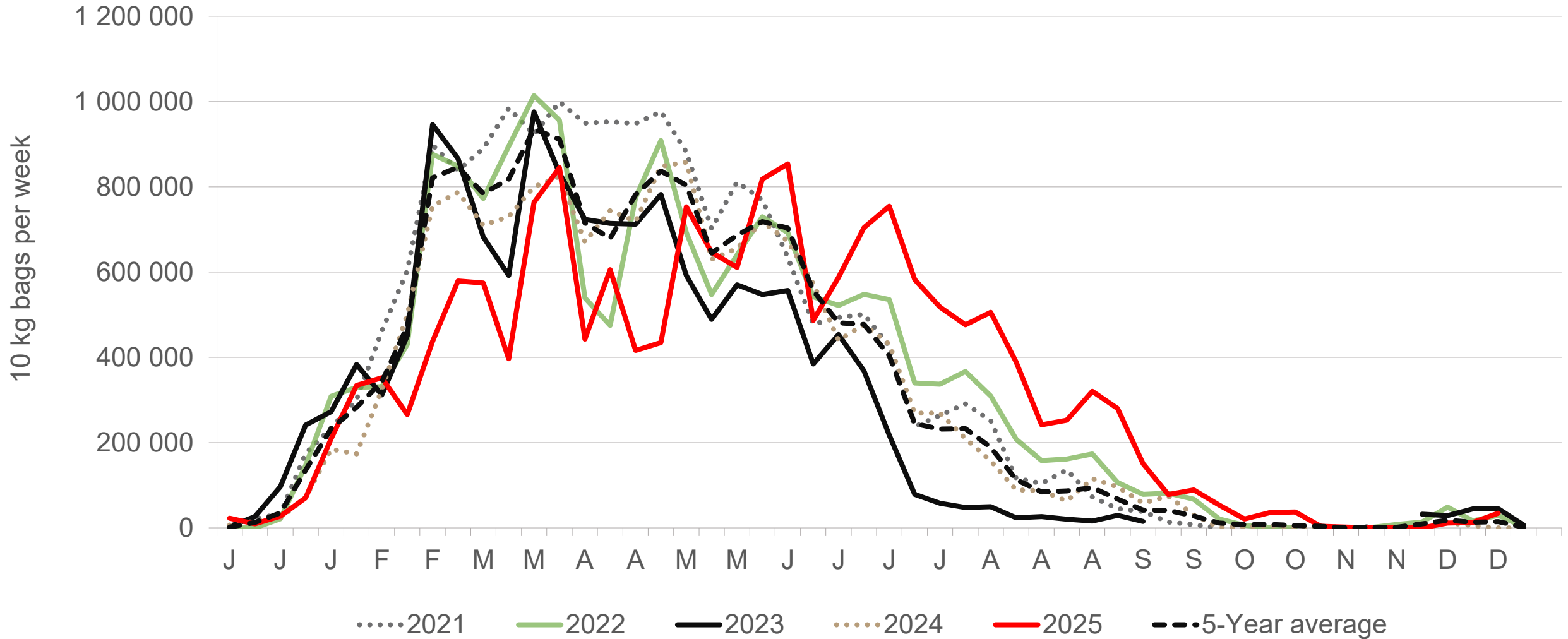
Eastern Cape: Amount of 10 kg bags per week sold on FPMs (all classes)



Sold 4% bags **less** than the first 51 weeks of 2024 and 133,323 bags **more** than the 5-year average (2020 to 2024) of the 51 weeks of each year.

Data disclaimer: Potatoes SA does not take responsibility for the accuracy or interpretation of company data re-purposed by 3rd parties

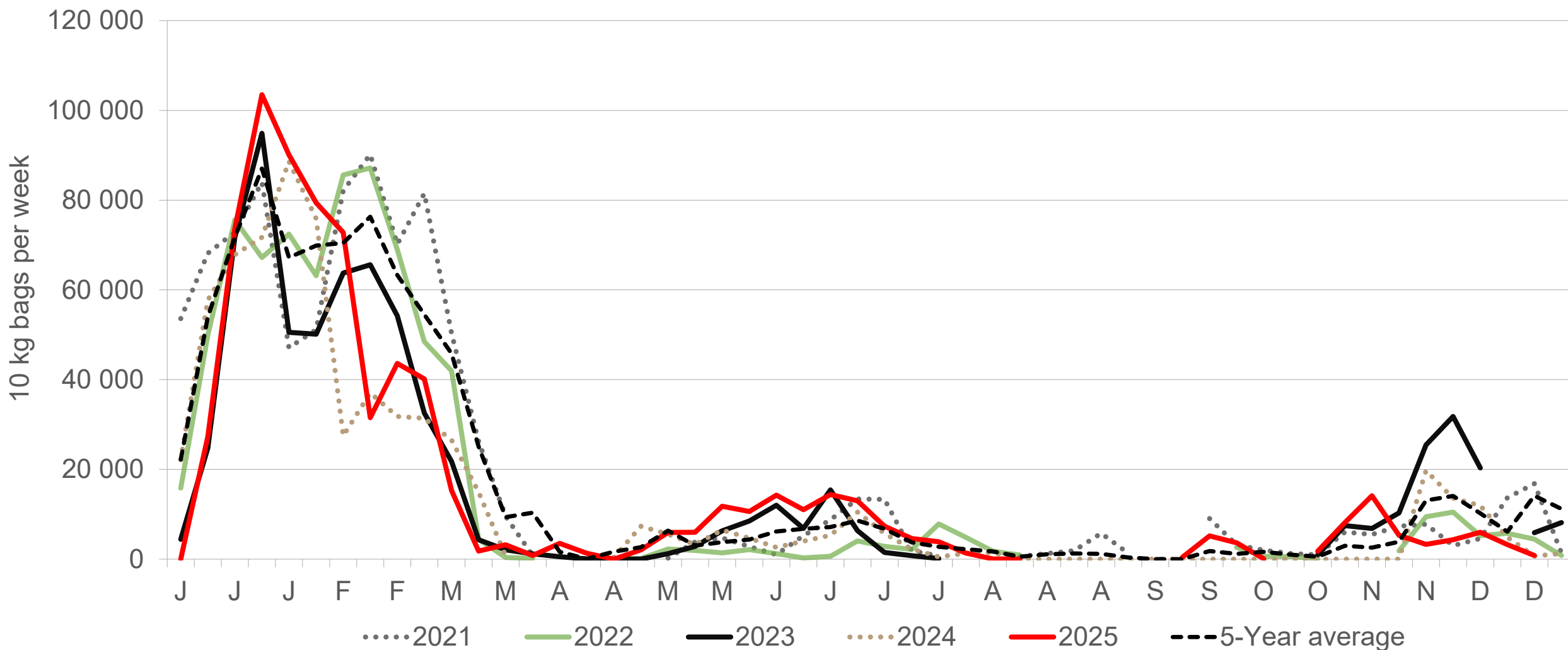
Eastern Free State: Amount of 10 kg bags per week sold on FPMs (all classes)



Sold 8% bags **more** than the first 51 weeks of 2024 and 426,472 **more** than the 5-year average (2020 to 2024) of the first 51 weeks of each year.

Data disclaimer: Potatoes SA does not take responsibility for the accuracy or interpretation of company data re-purposed by 3rd parties

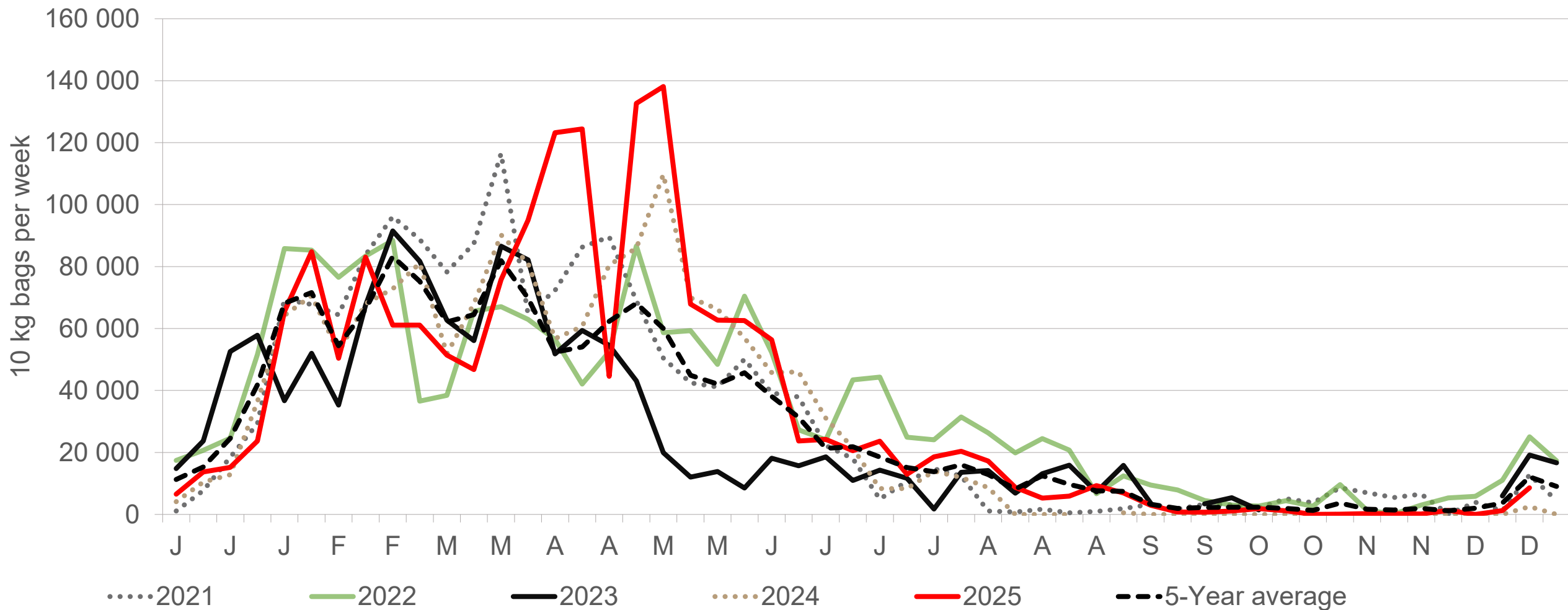
Mpumalanga: Amount of 10 kg bags per week sold on FPMs (all classes)



Sold 13% bags **more** than the first 51 weeks of 2024 and 123,415 bags **less** than the 5-year average (2020 to 2024) of the 51 weeks of each year.

Data disclaimer: Potatoes SA does not take responsibility for the accuracy or interpretation of company data re-purposed by 3rd parties

North Eastern Cape: Amount of 10 kg bags per week sold on FPMs (all classes)



Sold 14% bags **more** than the first 51 weeks of 2024 and 266,867 bags **more** than the 5-year average (2020 to 2024) of the first 51 weeks of each year.

Data disclaimer: Potatoes SA does not take responsibility for the accuracy or interpretation of company data re-purposed by 3rd parties

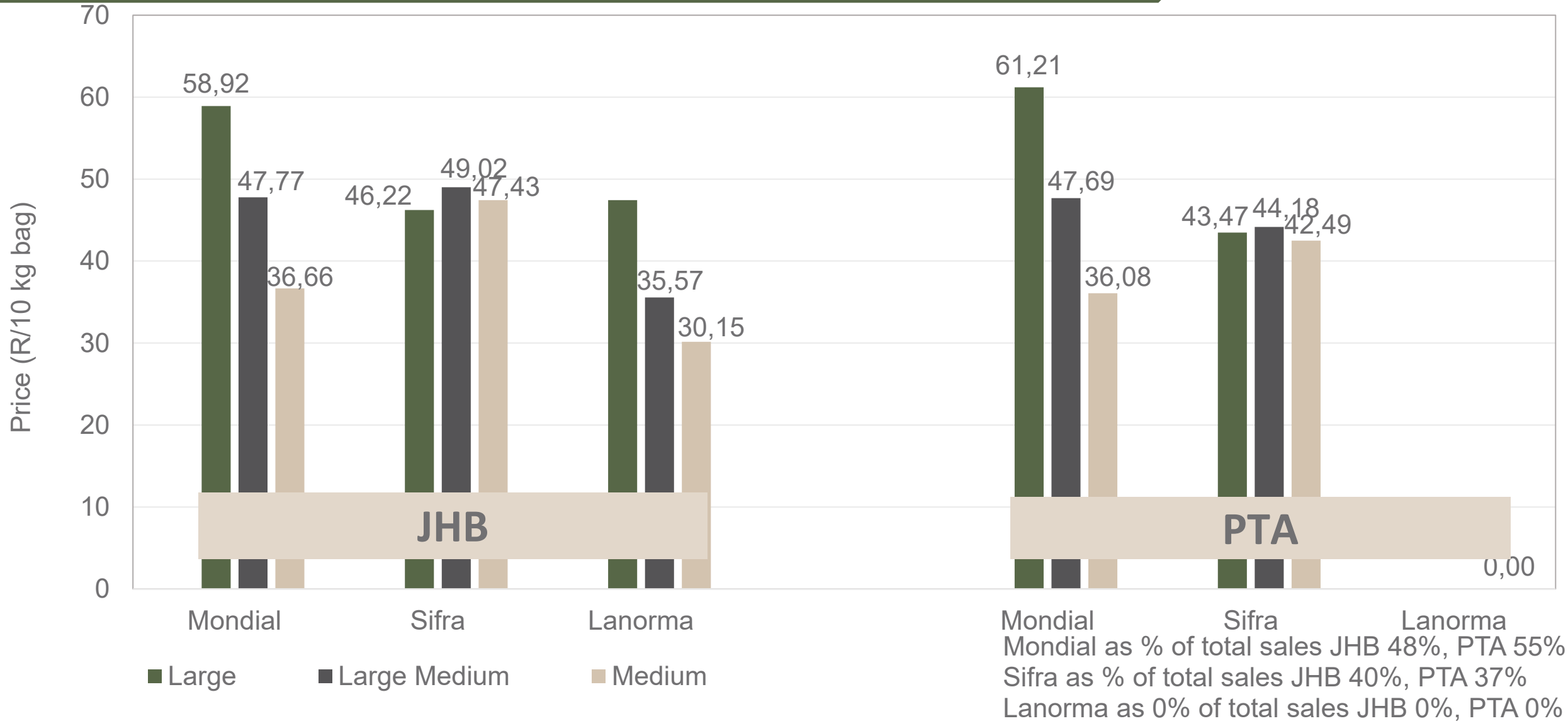
Average weekly prices and volumes for 10 kg bags of potatoes sold on selected markets from selected production regions



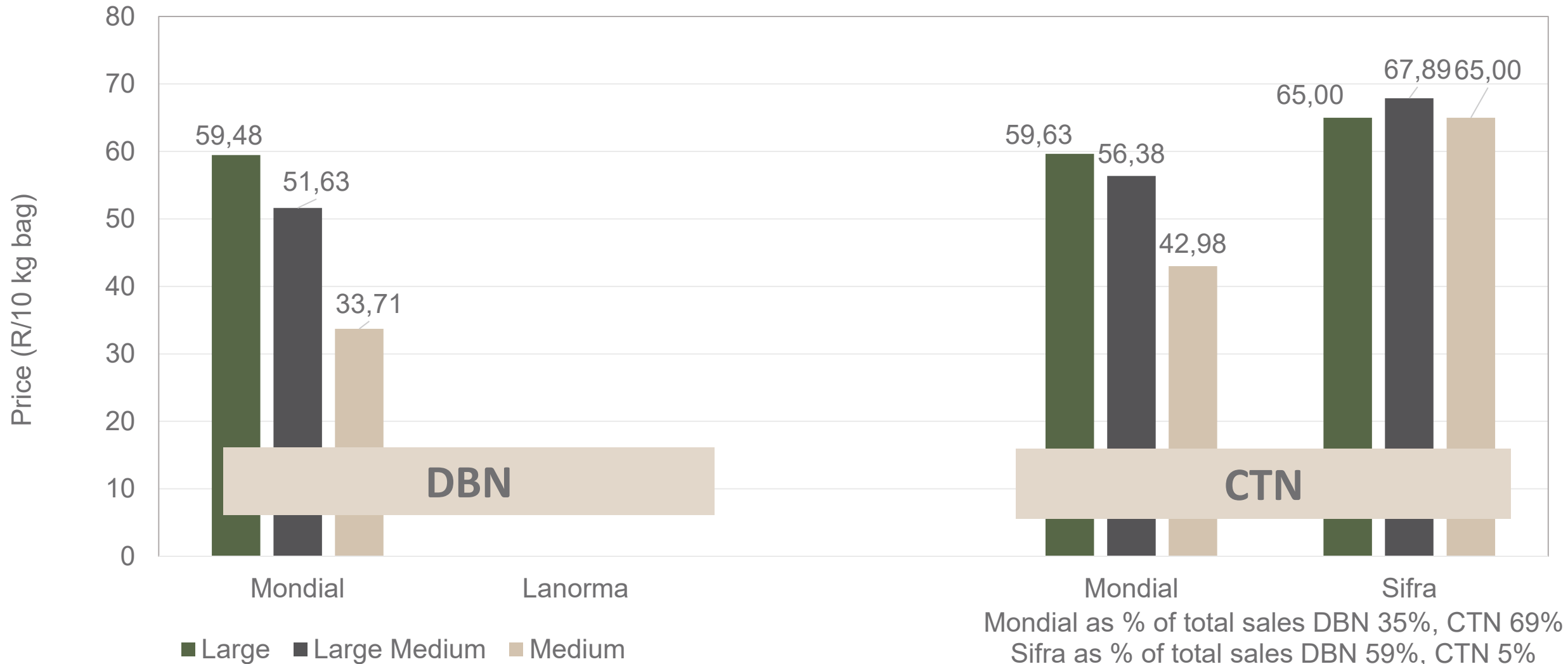
| Klas & Grootte | Limpopo | | | | Limpopo | | | | Limpopo | | | | Sandveld | | KwaZulu-Natal | | | | North West | | | | All Regions | |
|----------------|---------|--------|---------|--------|---------|--------|--------|--------|---------|--------|--------|--------|----------|--------|---------------|--------|--------|--------|------------|--------|--------|--------|-------------|--------|
| | JOH | | PRE | | DUR | | SPR | | BLO | | KLE | | CAP | | DUR | | PIE | | JOH | | PRE | | All Markets | |
| | Volume | Prices | Volume | Prices | Volume | Prices | Volume | Prices | Volume | Prices | Volume | Prices | Volume | Prices | Volume | Prices | Volume | Prices | Volume | Prices | Volume | Prices | Volume | Prices |
| | 10kg | R/10kg | 10kg | R/10kg | 10kg | R/10kg | 10kg | R/10kg | 10kg | R/10kg | 10kg | R/10kg | 10kg | R/10kg | 10kg | R/10kg | 10kg | R/10kg | 10kg | R/10kg | 10kg | R/10kg | 10kg | R/10kg |
| 1L | 81 879 | 51.96 | 39 488 | 55.43 | 240 | 33.09 | 11 127 | 55.32 | 623 | 50.39 | 6 694 | 49.09 | 25 950 | 57.62 | 12 179 | 56.28 | 4 670 | 59.36 | 62 979 | 52.25 | 23 650 | 46.06 | 548 794 | 53.26 |
| 1L/M | 86 853 | 42.20 | 53 847 | 43.27 | 1 021 | 36.20 | 13 573 | 44.06 | 3 655 | 43.16 | 7 955 | 30.64 | 36 982 | 53.02 | 17 304 | 47.06 | 5 126 | 51.39 | 57 900 | 55.88 | 20 098 | 52.53 | 607 141 | 47.18 |
| 1M | 97 784 | 33.93 | 39 341 | 34.22 | 2 285 | 17.45 | 9 737 | 32.73 | 2 854 | 30.68 | 5 437 | 24.58 | 34 610 | 41.54 | 17 559 | 35.58 | 8 407 | 47.15 | 29 424 | 52.79 | 14 130 | 49.89 | 482 432 | 40.94 |
| 1S | 27 402 | 17.51 | 8 704 | 21.82 | 220 | 20.00 | 3 215 | 18.13 | 444 | 12.80 | 632 | 15.77 | 17 461 | 33.42 | 7 653 | 26.57 | 1 799 | 30.77 | 14 293 | 28.50 | 3 082 | 28.68 | 123 054 | 24.97 |
| 1S/M | 19 528 | 22.31 | 9 848 | 27.32 | - | - | 1 878 | 28.63 | 344 | 39.92 | 440 | 17.62 | 4 479 | 35.34 | 1 645 | 30.57 | 796 | 36.63 | 20 911 | 39.55 | 7 277 | 35.43 | 122 081 | 32.55 |
| 1XL | 79 | 65.44 | - | - | - | - | - | - | - | - | - | - | - | - | - | - | - | - | - | - | - | - | 79 | 65.44 |
| 1XS | 13 966 | 9.88 | - | - | - | - | - | - | - | - | - | - | - | - | - | - | - | - | 7 222 | 36.23 | - | - | 25 120 | 19.99 |
| 1XXS | - | - | - | - | - | - | - | - | - | - | - | - | - | - | - | - | - | - | 617 | 45.84 | - | - | 648 | 45.92 |
| 2L | 12 763 | 43.70 | 16 499 | 52.44 | - | - | 1 629 | 50.67 | 846 | 42.02 | 1 411 | 54.94 | 10 177 | 47.21 | 3 069 | 50.51 | 2 740 | 51.34 | 1 469 | 41.89 | 553 | 38.01 | 123 591 | 48.36 |
| 2L/M | 11 474 | 34.93 | 14 525 | 43.87 | - | - | 3 522 | 41.65 | 1 299 | 21.83 | 1 859 | 27.39 | 14 599 | 47.18 | 2 277 | 43.10 | 2 839 | 45.54 | 4 825 | 42.47 | 2 505 | 39.04 | 115 839 | 41.62 |
| 2M | 6 807 | 26.08 | 8 952 | 32.08 | - | - | 2 258 | 40.14 | 1 | 50.00 | 1 665 | 22.62 | 18 253 | 38.36 | 2 990 | 32.53 | 1 724 | 39.02 | 4 001 | 34.20 | 413 | 29.64 | 87 766 | 35.15 |
| 2S | 2 413 | 11.48 | 2 783 | 16.91 | - | - | 347 | 20.83 | - | - | 52 | 27.50 | 3 899 | 28.07 | 1 730 | 16.32 | 800 | 20.69 | 110 | 16.04 | 87 | 20.17 | 18 642 | 20.58 |
| 2S/M | 1 715 | 19.44 | 2 146 | 20.87 | - | - | 515 | 30.02 | - | - | 17 | 6.35 | 820 | 27.90 | 100 | 30.00 | 123 | 31.22 | 769 | 25.85 | - | - | 14 030 | 25.70 |
| 2XL | - | - | - | - | - | - | - | - | - | - | - | - | - | - | - | - | - | - | - | - | - | - | - | - |
| 2XS | 107 | 12.00 | - | - | - | - | - | - | - | - | - | - | - | - | - | - | - | - | 110 | 10.00 | - | - | 920 | 7.97 |
| 2XXS | - | - | - | - | - | - | - | - | - | - | - | - | - | - | - | - | - | - | - | - | - | - | 392 | 5.13 |
| 3L | 436 | 32.48 | 131 | 39.77 | - | - | 100 | 37.76 | - | - | 632 | 54.19 | 212 | 32.33 | 1 920 | 23.01 | 1 260 | 25.56 | 689 | 32.77 | 300 | 33.27 | 23 419 | 35.09 |
| 3L/M | 1 405 | 29.86 | 753 | 35.01 | - | - | 255 | 30.93 | - | - | - | - | 12 | 44.83 | 1 632 | 18.75 | - | - | 3 175 | 36.57 | 1 873 | 36.00 | 22 531 | 32.58 |
| 3M | 1 963 | 21.75 | 1 105 | 24.85 | - | - | 141 | 28.42 | - | - | - | - | 1 644 | 30.20 | 539 | 20.00 | 501 | 35.09 | 4 131 | 29.55 | 455 | 28.36 | 33 233 | 28.59 |
| 3S/M | - | - | - | - | - | - | - | - | - | - | - | - | - | - | - | - | - | - | 770 | 15.29 | - | - | 1 862 | 20.54 |
| 3XS | - | - | - | - | - | - | - | - | - | - | - | - | - | - | - | - | - | - | - | - | - | - | - | - |
| 3XXS | - | - | - | - | - | - | - | - | - | - | - | - | - | - | - | - | - | - | - | - | - | - | - | - |
| 4L | - | - | 99 | 13.69 | - | - | - | - | - | - | - | - | - | - | - | - | 490 | 19.63 | - | - | - | - | 1 000 | 31.16 |
| 4L/M | - | - | 98 | 10.08 | - | - | - | - | - | - | - | - | - | - | 1 395 | 20.29 | - | - | - | - | - | - | 1 713 | 20.72 |
| 4M | - | - | - | - | - | - | - | - | - | - | - | - | 37 | 15.00 | - | - | 442 | 27.24 | - | - | - | - | 1 626 | 23.63 |
| 4S | - | - | - | - | - | - | - | - | - | - | - | - | 20 | 10.00 | - | - | - | - | - | - | - | - | 385 | 19.12 |
| 4S/M | - | - | - | - | - | - | - | - | - | - | - | - | - | - | - | - | - | - | - | - | 133 | 17.08 | 227 | 18.38 |
| Total | 366 574 | 37.08 | 201 247 | 41.26 | 3 766 | 23.68 | 49 169 | 40.91 | 10 068 | 35.77 | 26 799 | 34.54 | 181 471 | 43.45 | 72 758 | 39.68 | 32 636 | 44.92 | 213 395 | 48.28 | 76 948 | 45.65 | 2 386 612 | 43.31 |

Data disclaimer: Potatoes SA does not take responsibility for the accuracy or interpretation of company data re-purposed by 3rd parties

PTA & JHB markets: Average Prices - Different Sizes (only 10 kg bags)



DBN & CTN markets: Average Prices - Different Sizes (only 10 kg bags)



Mondial as % of total sales DBN 35%, CTN 69%
 Sifra as % of total sales DBN 59%, CTN 5%
 Lanorma as % of total sales DBN 0%, CTN 0%


Data disclaimer: Potatoes SA does not take responsibility for the accuracy or interpretation of company data re-purposed by 3rd parties

Thank you for your time


Feel free to contact us

 Lebo@potatoes.co.za

Jodie@potatoes.co.za

 +27 (0)12 349 1906

 6 De Havilland Crescent
Persequor Techno Park
Persequor Park
Pretoria

 www.potatoes.co.za



Potatoes
Aartappels SA