



## Weekly Market Information

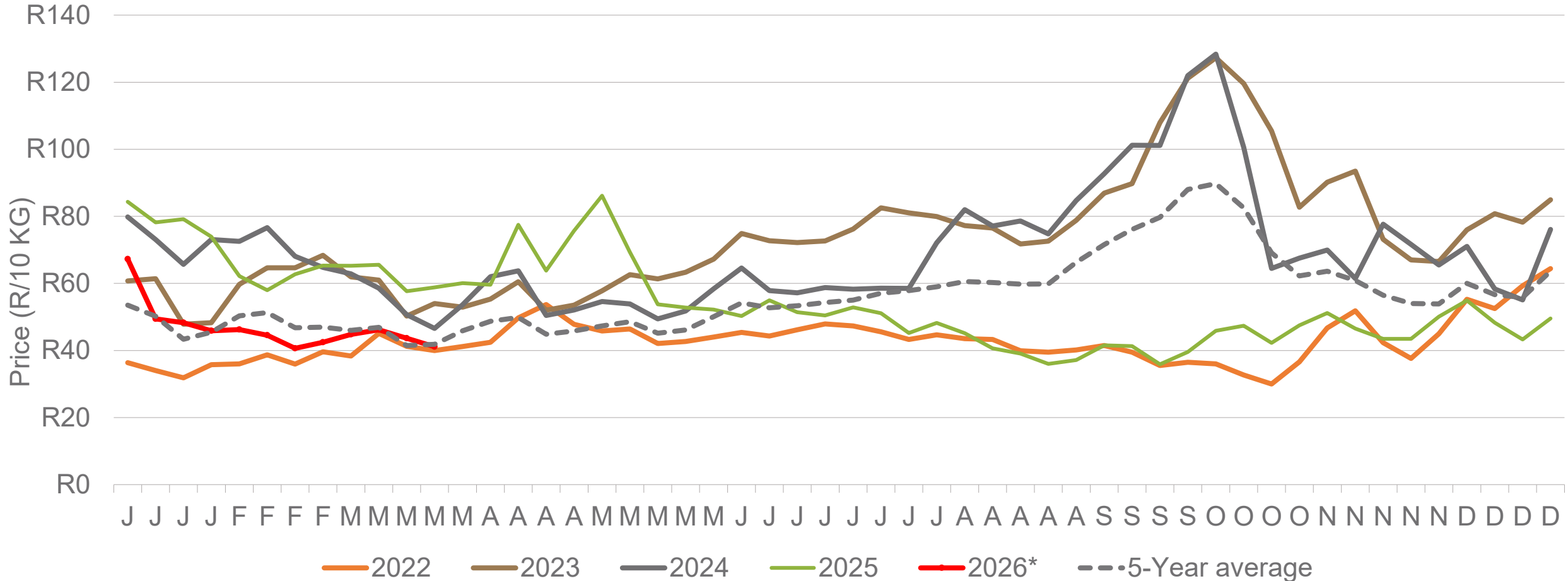
20 March 2026



Potatoes  
Aartappels SA

[www.potatoes.co.za](http://www.potatoes.co.za)

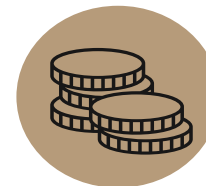
# Average weekly price – all markets & all classes



Number of bags sold

**6%**

(Week on Week)



Average weekly price

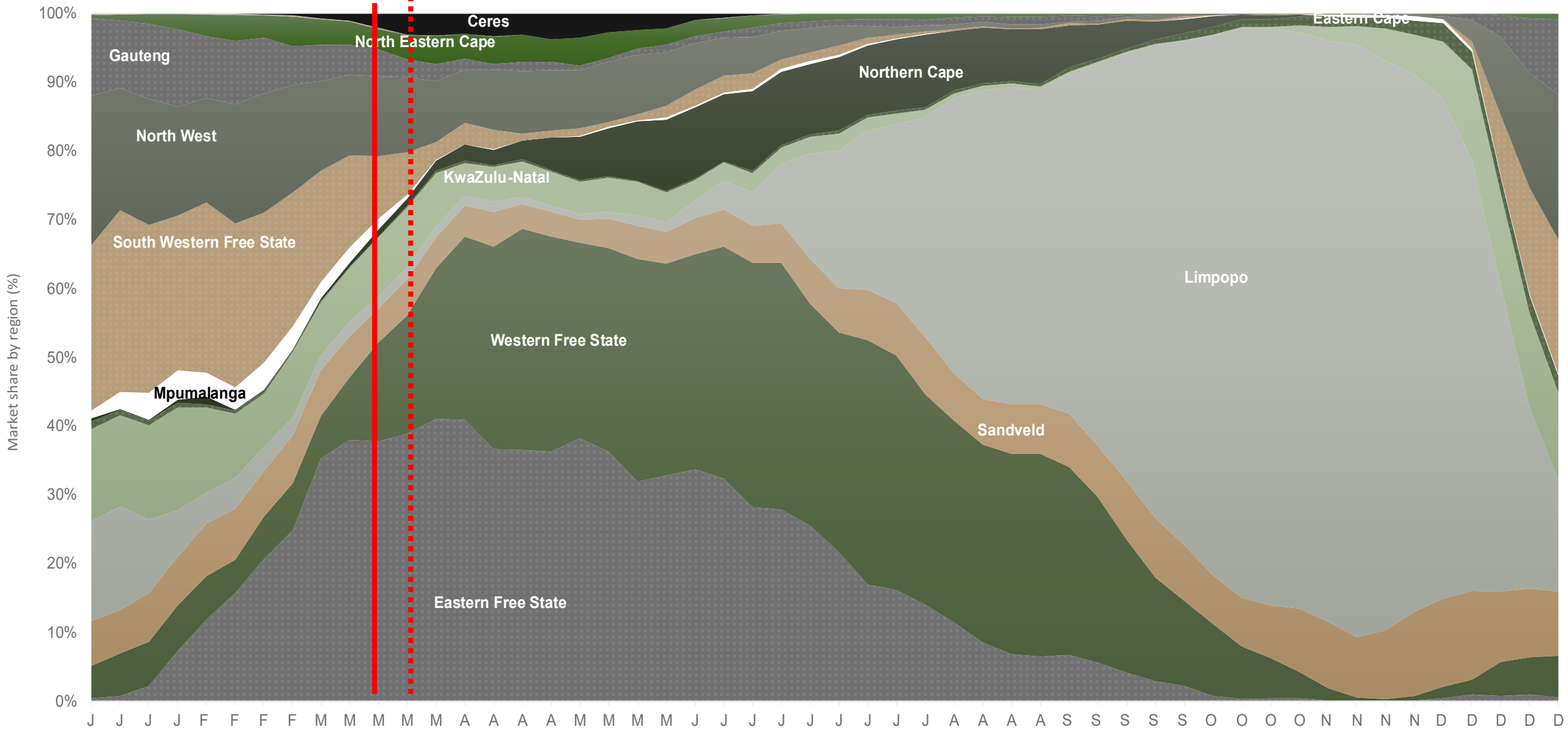
**6%**

(Week on week)



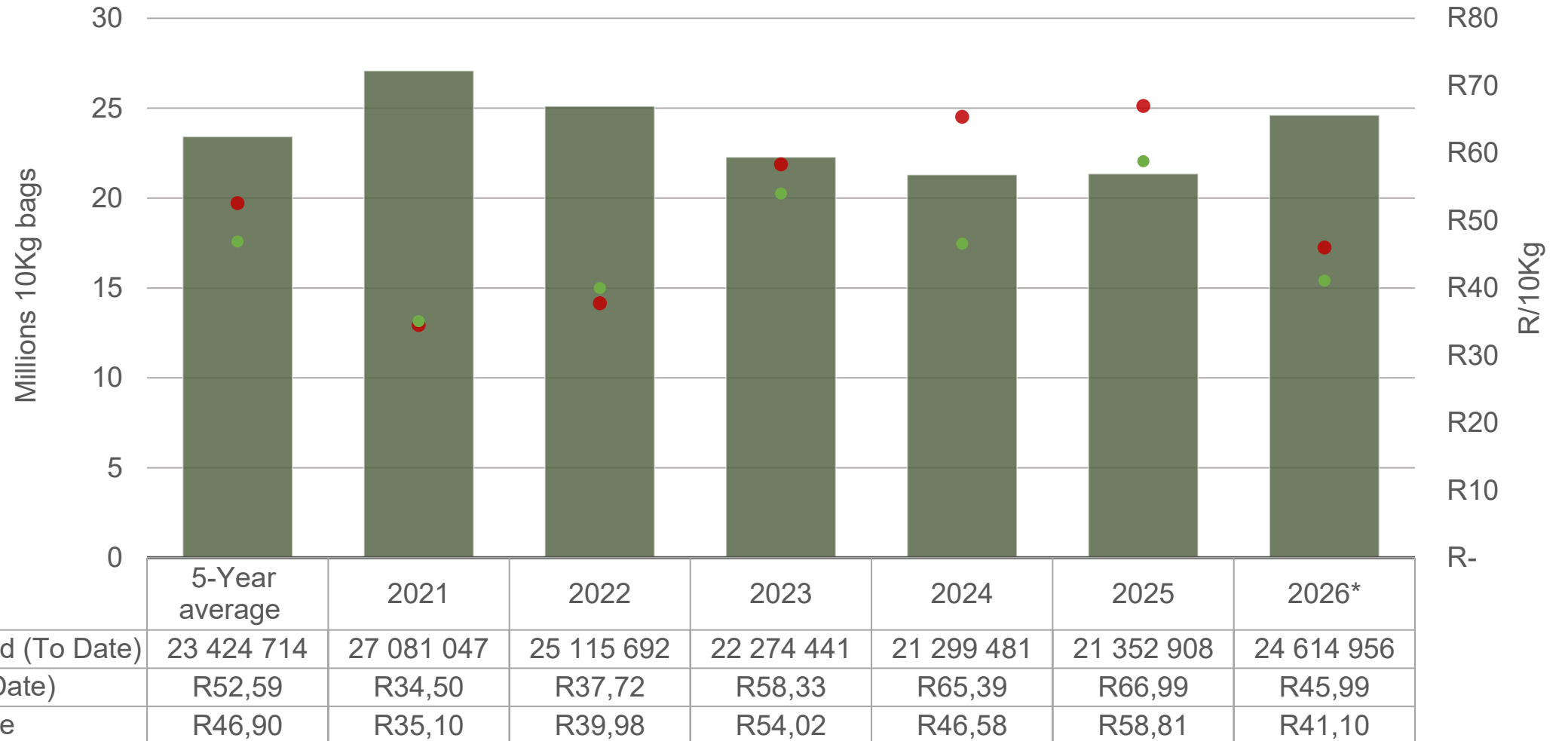
Data disclaimer: Potatoes SA does not take responsibility for the accuracy or interpretation of company data re-purposed by 3rd parties

# Market share of regions on fresh produce markets 2021-2025



*Data disclaimer: Potatoes SA does not take responsibility for the accuracy or interpretation of company data re-purposed by 3rd parties*

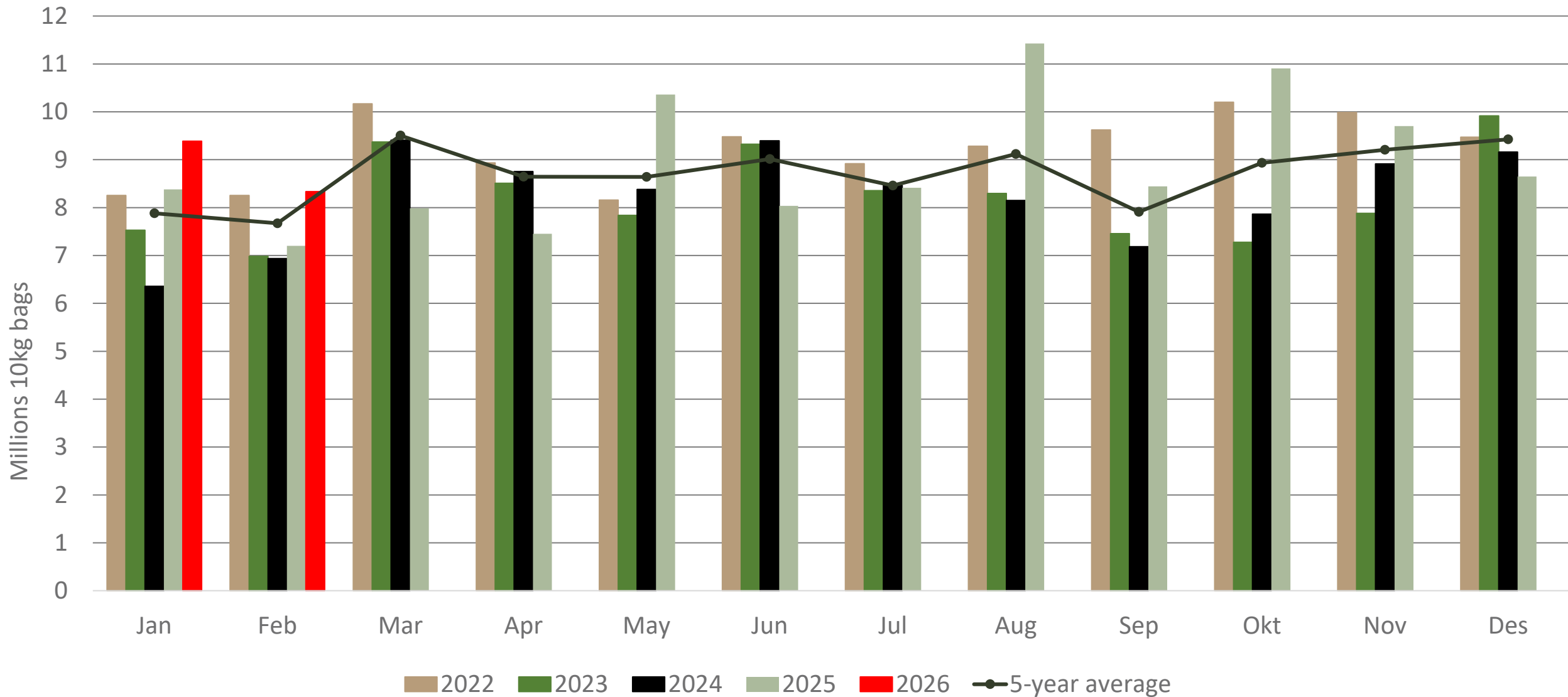
# Cumulative total number of 10 kg bags sold on markets



Sold 1,190,242 bags **more** than the **5-year average** (2021 to 2025) of the first 12 weeks of 2026

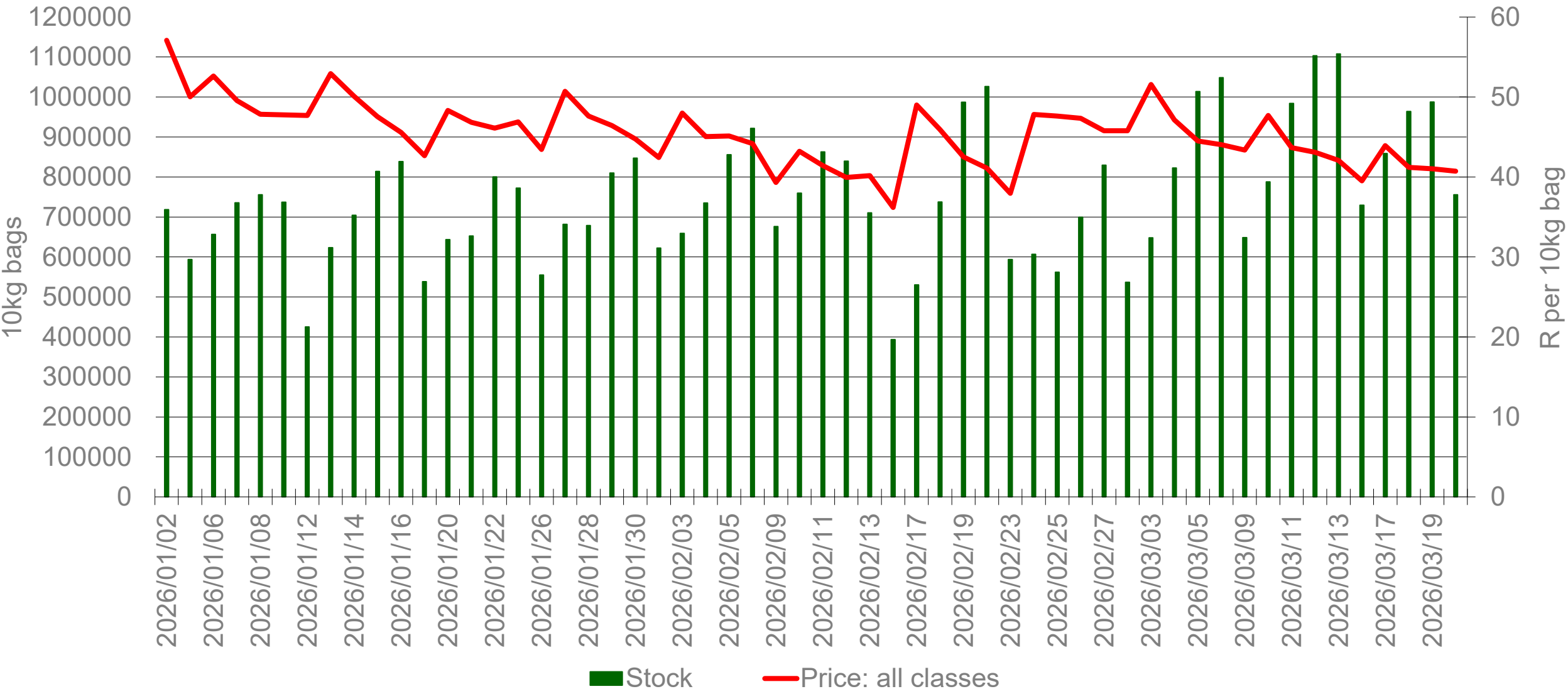
*Data disclaimer: Potatoes SA does not take responsibility for the accuracy or interpretation of company data re-purposed by 3rd parties*

# Monthly sales volumes on markets: Potatoes



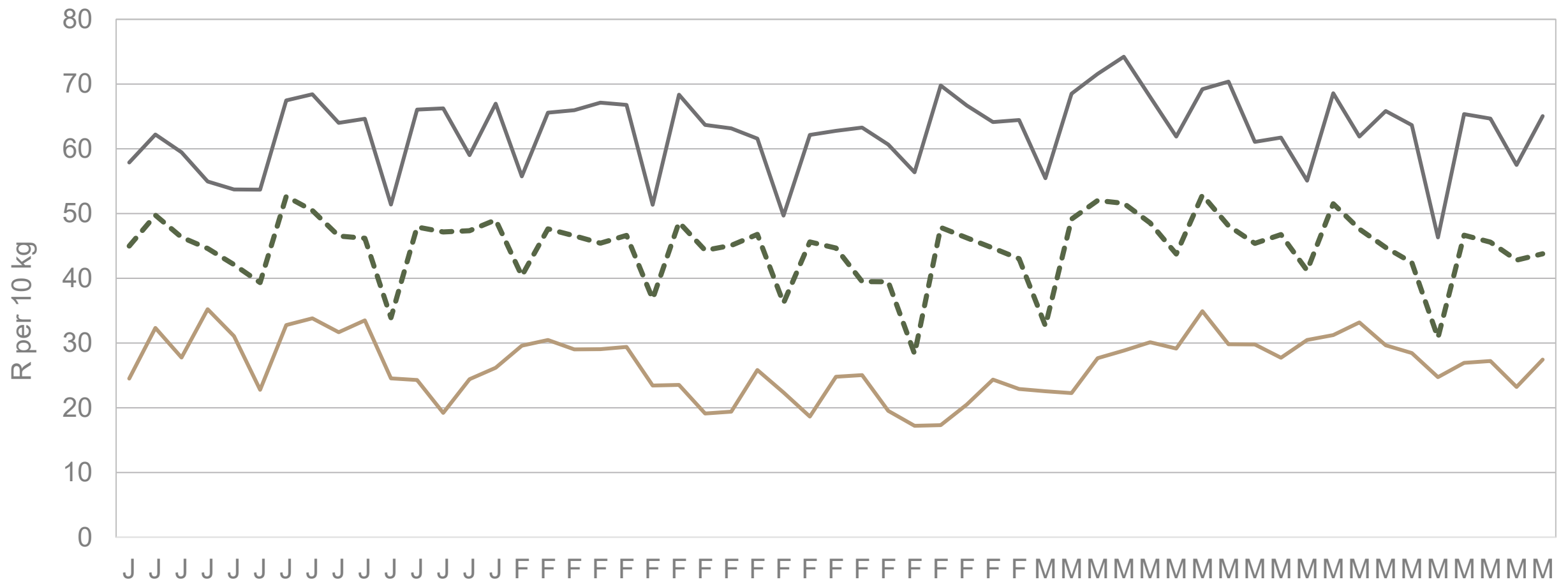
Data disclaimer: Potatoes SA does not take responsibility for the accuracy or interpretation of company data re-purposed by 3rd parties

# RSA daily price versus daily available stocks (all classes & all sizes)



Data disclaimer: Potatoes SA does not take responsibility for the accuracy or interpretation of company data re-purposed by 3rd parties

# JHB market daily : Top 10% versus bottom 10% prices – Class 1 Medium (since January 2026)



— Top 10% Class 1 Medium    - - - All Class 1 Medium    — Bottom 10% Class 1 Medium

*Data disclaimer: Potatoes SA does not take responsibility for the accuracy or interpretation of company data re-purposed by 3rd parties*

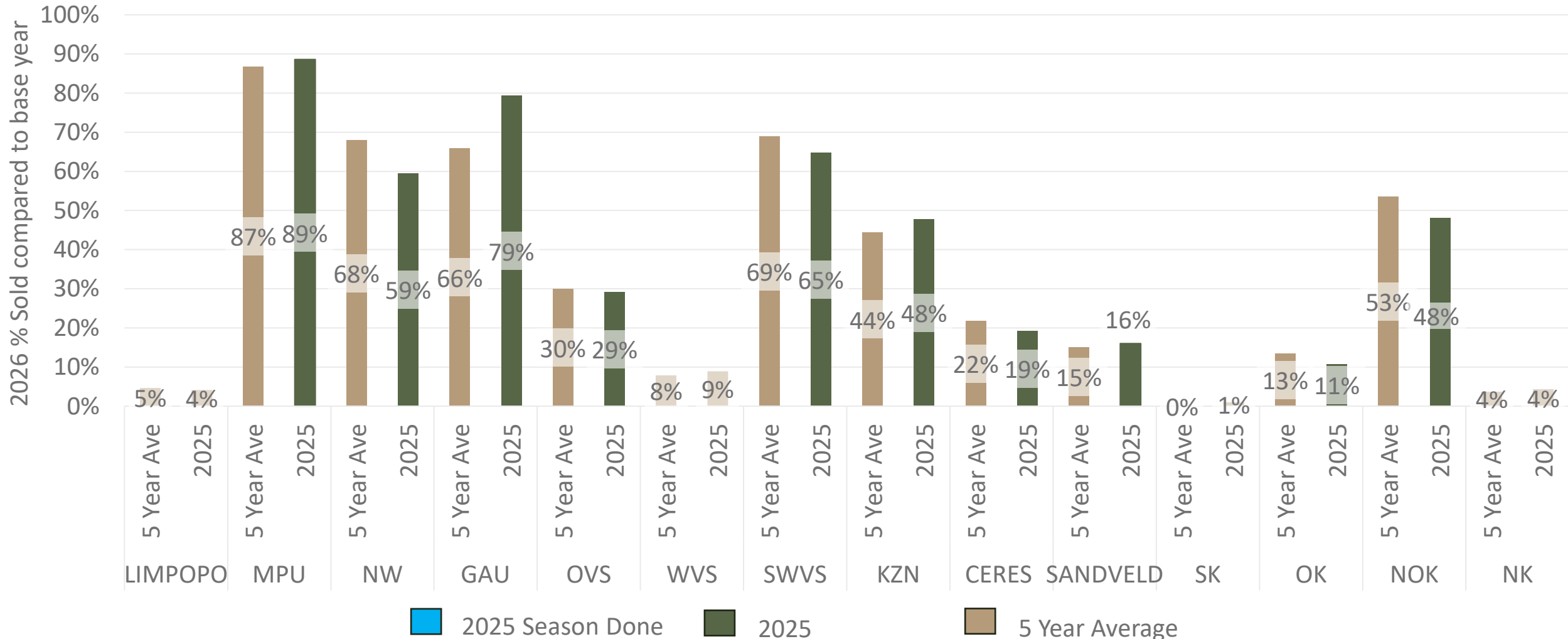
# FPM Sales pace comparison per region

## 2026 compared to 5-year average and 2025



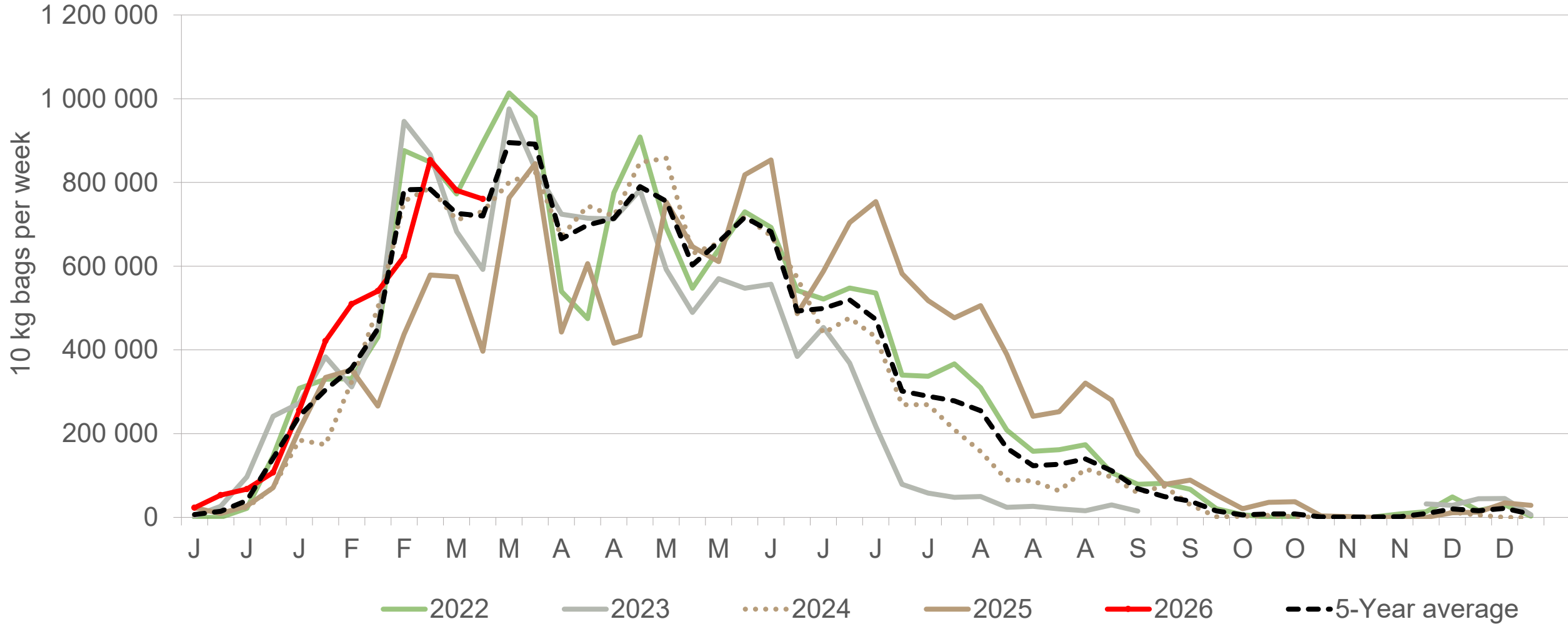
The *FPM Sales pace* compares the current year's cumulative volumes sold on the FPM with the previous year and the five-year average. Differences in these trends reflect variations in hectares planted, regional weather conditions, yield performance, and market timing. Blue indicates regions that are done delivering for this season. Seasons are based on calendar year.

*Note: This comparison is based on total volumes sold, not on hectares planted*



*Data disclaimer: Potatoes SA does not take responsibility for the accuracy or interpretation of company data re-purposed by 3rd parties*

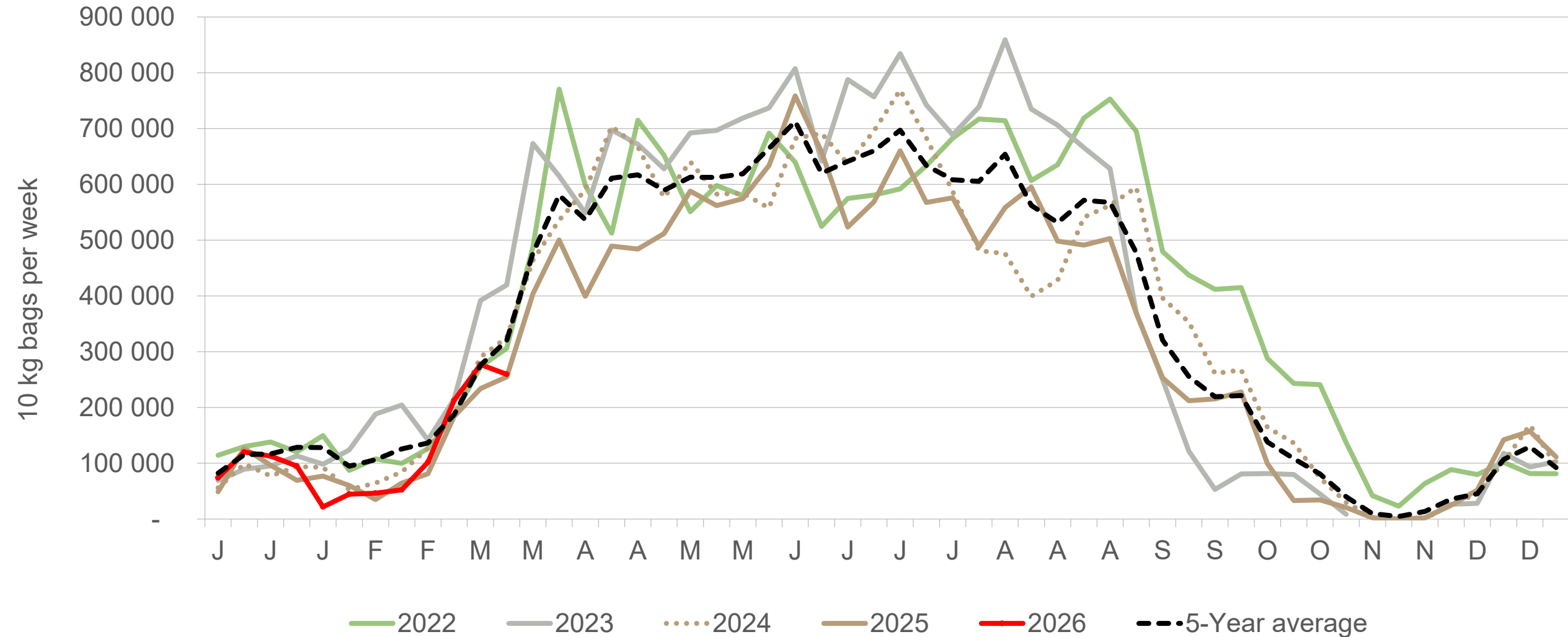
# Eastern Free State: Amount of 10 kg bags per week sold on FPMs (all classes)



Sold 52% bags **more** than the first 12 weeks of 2025 and 428,497 **more** than the 5-year average (2021 to 2025) of the first 12 weeks of each year.

*Data disclaimer: Potatoes SA does not take responsibility for the accuracy or interpretation of company data re-purposed by 3rd parties*

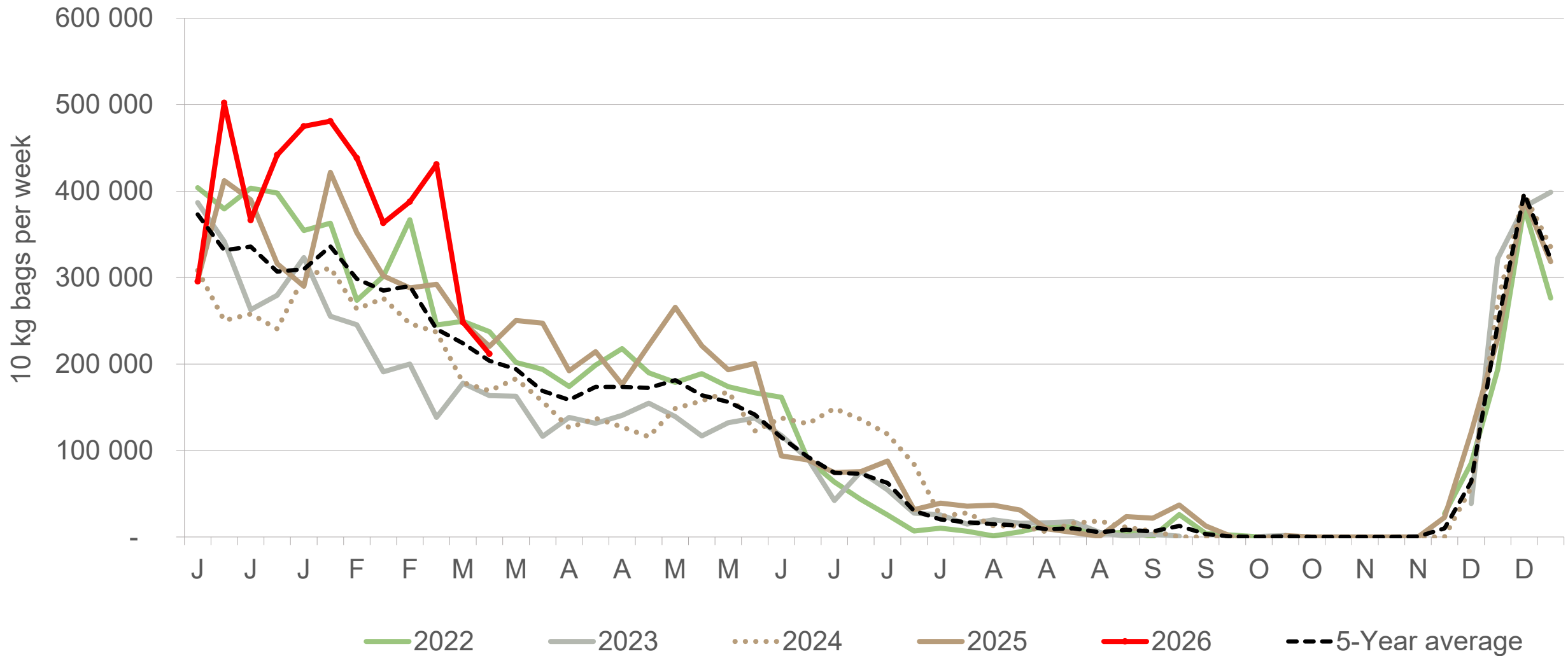
# Western Free State : Amount of 10 kg bags per week sold on FPMs (all classes)



Sold 6% bags **more** than the first 12 weeks of 2025 and 339,944 bags **less** than the 5-year average (2021 to 2025) of the first 12 weeks of each year.

*Data disclaimer: Potatoes SA does not take responsibility for the accuracy or interpretation of company data re-purposed by 3rd parties*

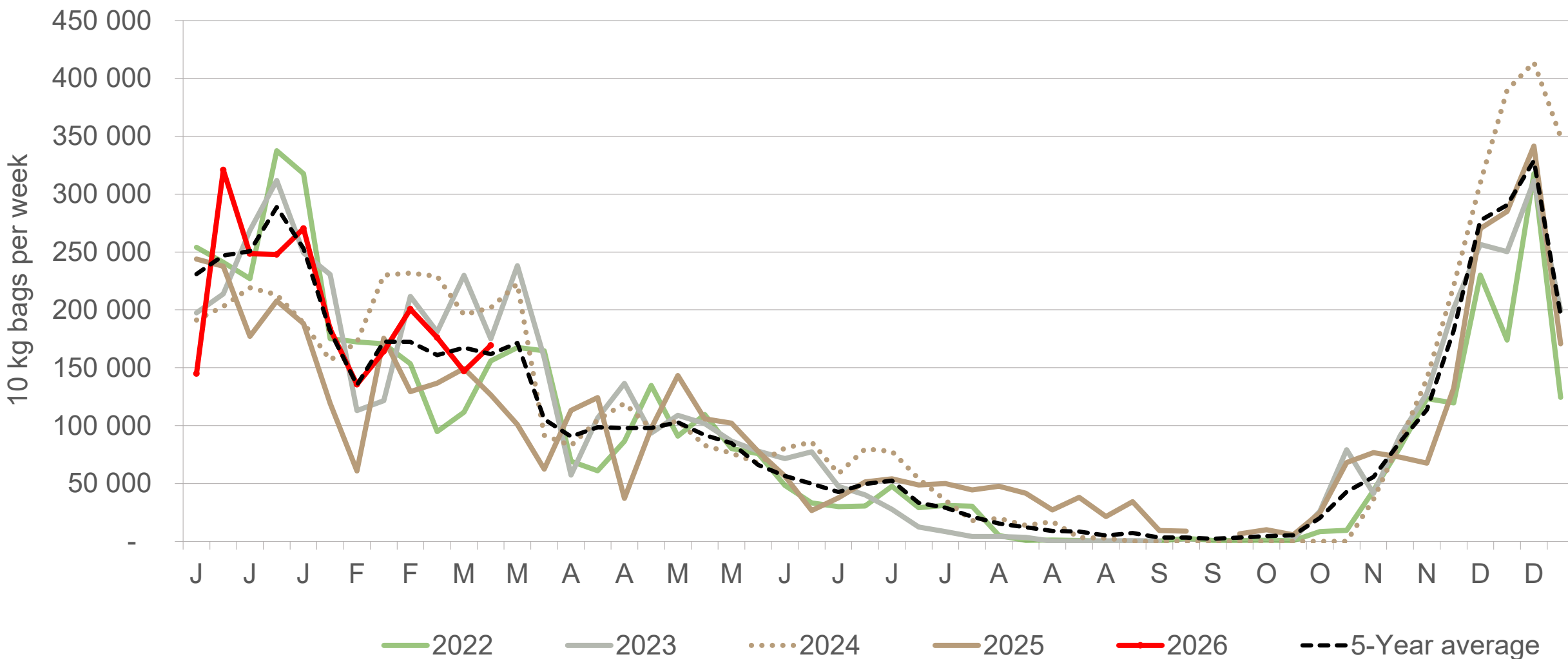
# North-West: Amount of 10 kg bags per week sold on FPMs (all classes)



Sold 21% bags **more** than the first 12 weeks of 2025 and 1,107,372 **more** than the 5-year average (2021 to 2025) of the first 12 weeks of each year.

*Data disclaimer: Potatoes SA does not take responsibility for the accuracy or interpretation of company data re-purposed by 3rd parties*

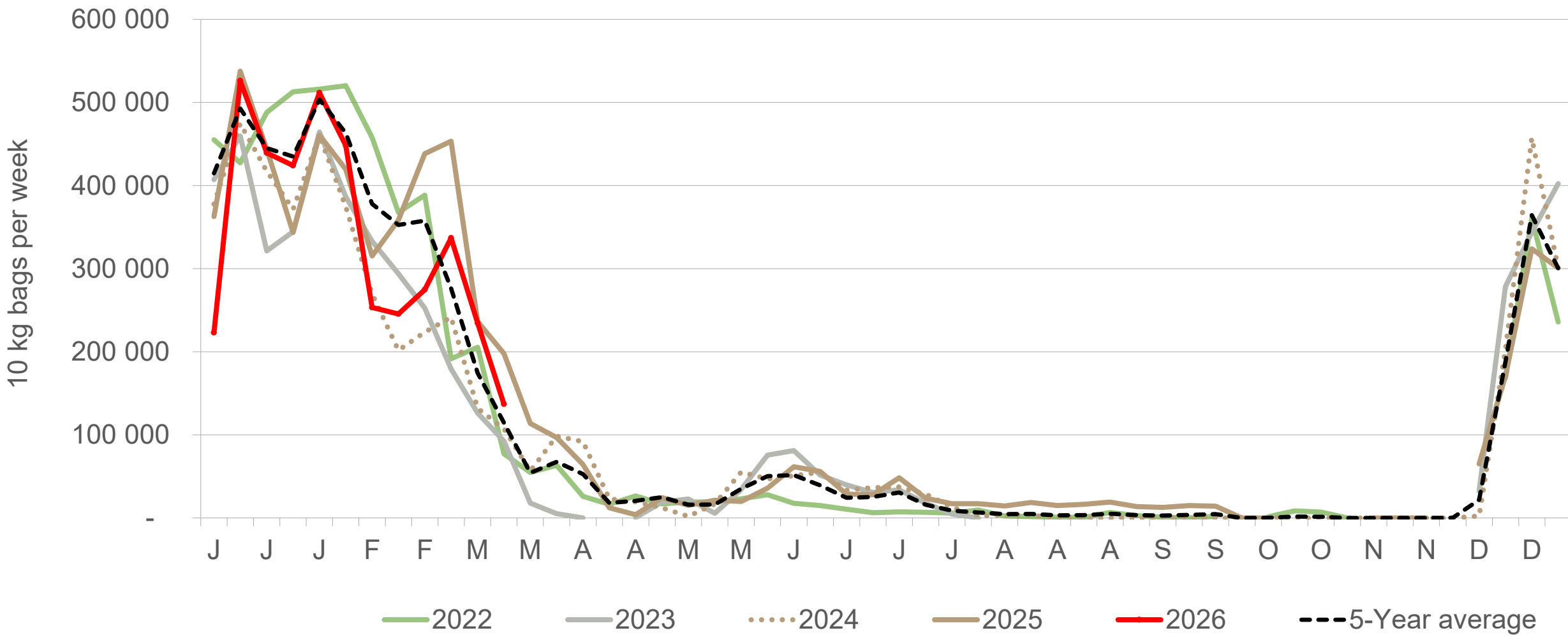
# KwaZulu-Natal: Amount of 10 kg bags per week sold on FPMs (all classes)



Sold 23% bags **more** than the first 12 weeks of 2025 and 13,202 bags **less** than the 5-year average (2021 to 2025) of the first 12 weeks of each year.

*Data disclaimer: Potatoes SA does not take responsibility for the accuracy or interpretation of company data re-purposed by 3rd parties*

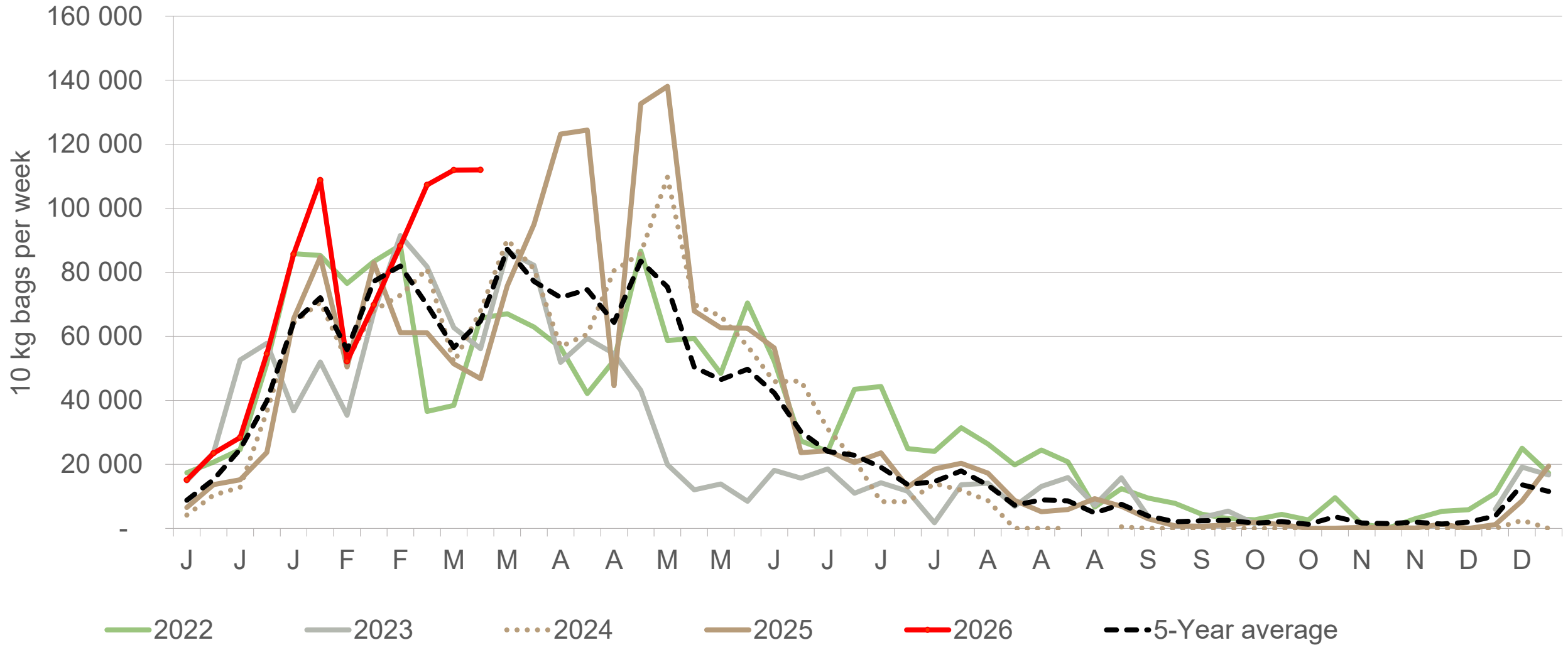
# South Western Free State: Amount of 10 kg bags per week sold on FPMs (all classes)



Sold 11% bags **less** than the first 12 weeks of 2025 and 352,628 bags **less** than the 5-year average (2021 to 2025) of the first 12 weeks of each year.

*Data disclaimer: Potatoes SA does not take responsibility for the accuracy or interpretation of company data re-purposed by 3rd parties*

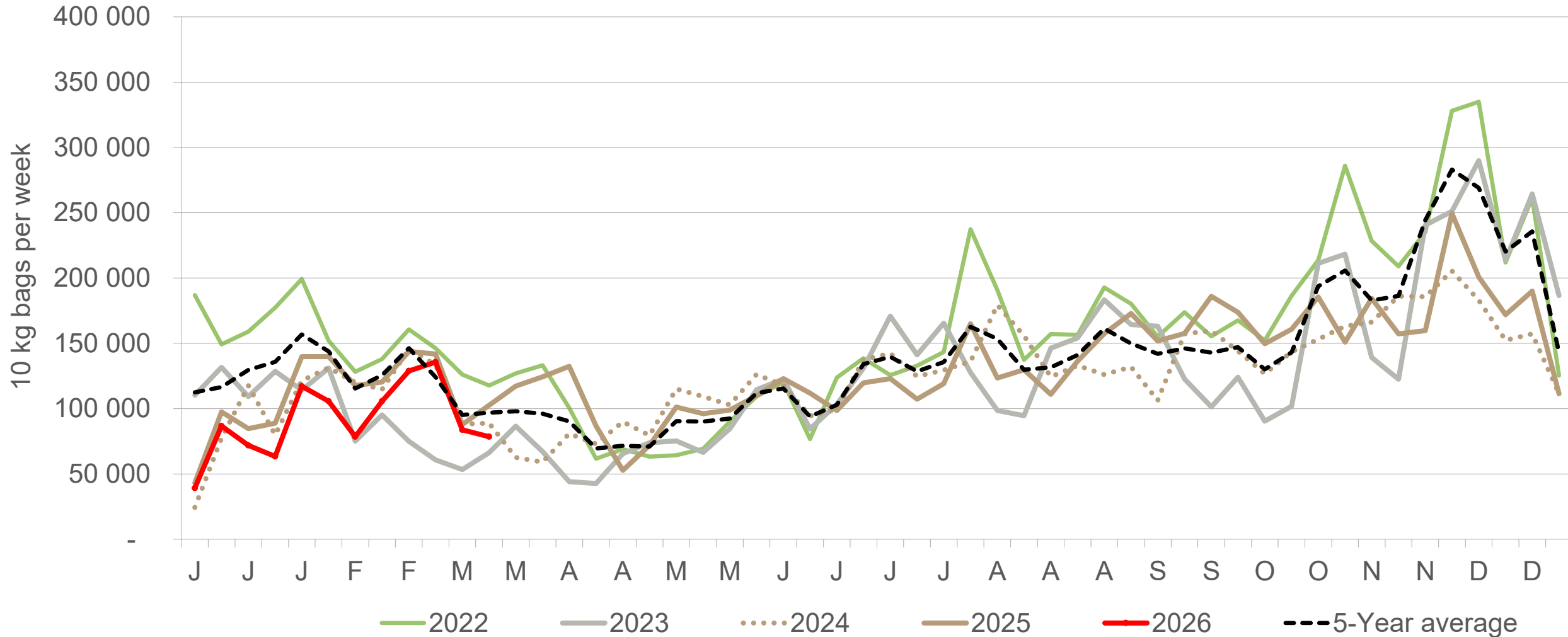
# North Eastern Cape: Amount of 10 kg bags per week sold on FPMs (all classes)



Sold 52% bags **more** than the first 12 weeks of 2025 and 226,392 bags **more** than the 5-year average (2021 to 2025) of the first 12 weeks of each year.

*Data disclaimer: Potatoes SA does not take responsibility for the accuracy or interpretation of company data re-purposed by 3rd parties*

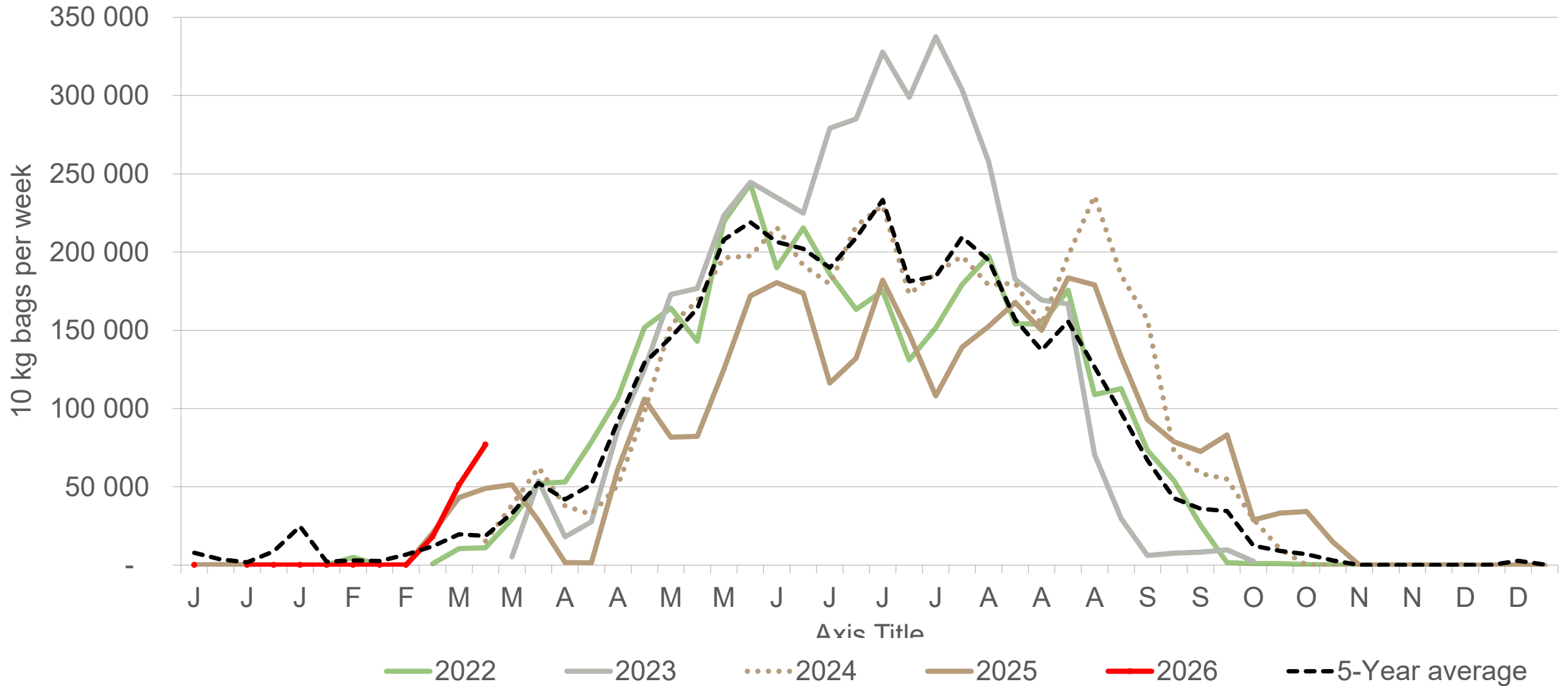
# Sandveld: Amount of 10 kg bags per week sold on FPMs (all classes)



Sold 16% bags **less** than the first 12 weeks of 2025 and 402,750 bags **less** than the 5-year average (2021 to 2025) of the first 12 weeks of each year.

*Data disclaimer: Potatoes SA does not take responsibility for the accuracy or interpretation of company data re-purposed by 3rd parties*

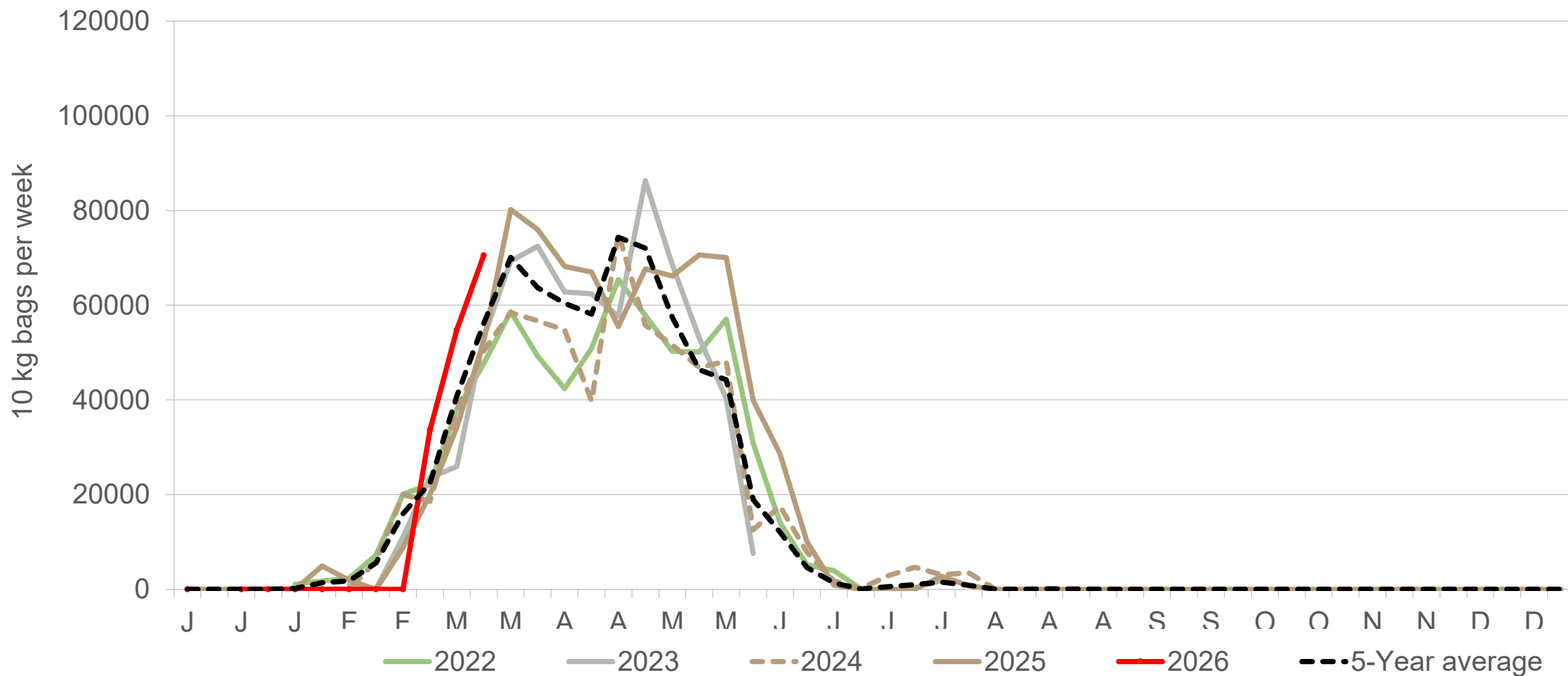
# Northern Cape: Amount of 10 kg bags per week sold on FPMs (all classes)



Sold 30% bags **more** than the first 1 weeks of 2025 and 34,748 bags **more** than the 5-year average (2021 to 2025) of the first 12 weeks of each year.

*Data disclaimer: Potatoes SA does not take responsibility for the accuracy or interpretation of company data re-purposed by 3rd parties*

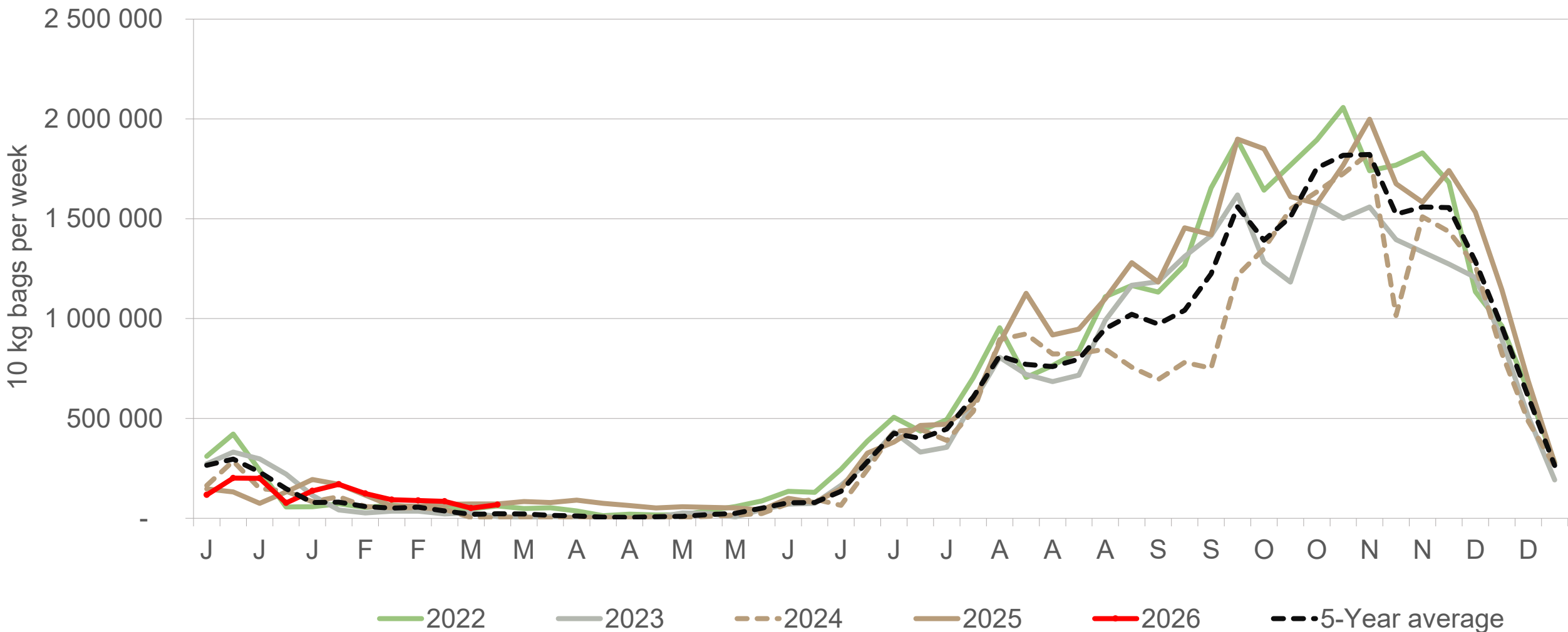
# Ceres: Amount of 10 kg bags per week sold on FPMs (all classes)



Sold 30% bags **more** than the first 1 weeks of 2025 and 14,679 bags **more** than the 5-year average (2021 to 2025) of the first 12 weeks of each year.

*Data disclaimer: Potatoes SA does not take responsibility for the accuracy or interpretation of company data re-purposed by 3rd parties*

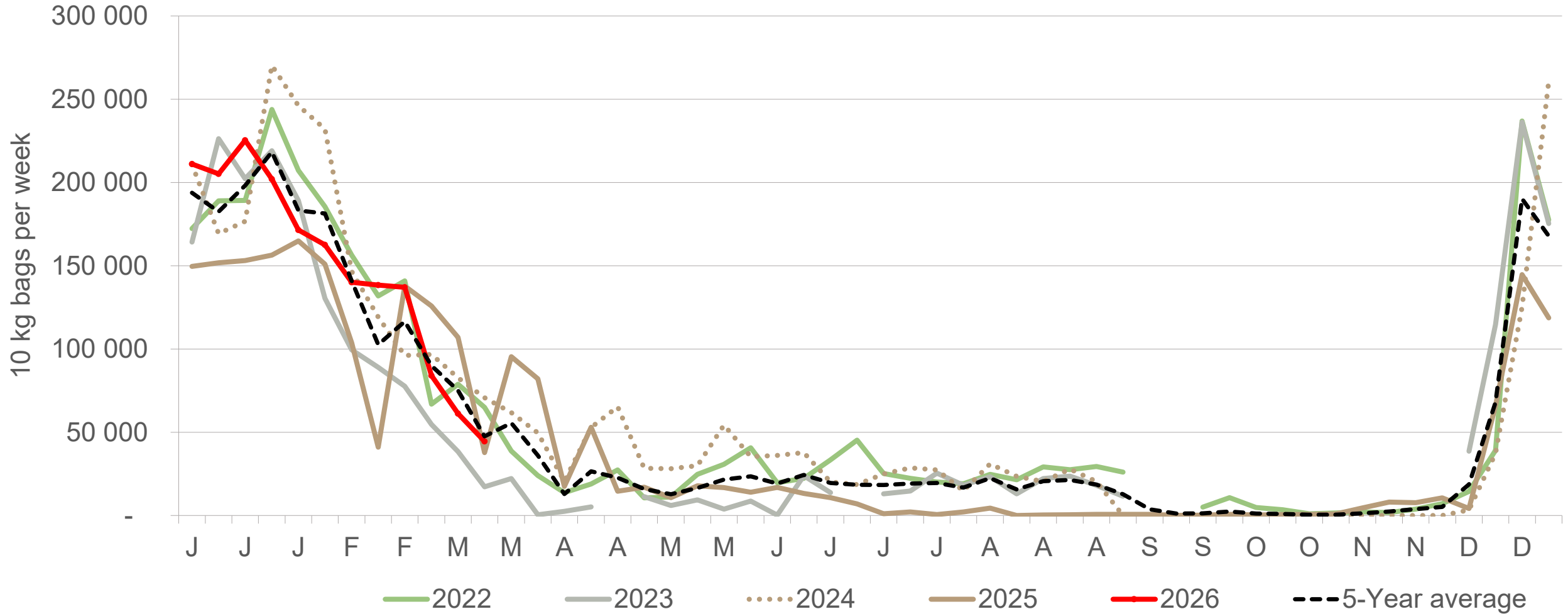
# Limpopo: Amount of 10 kg bags per week sold on FPMs (all classes)



Sold 8% bags **more** than the first 12 weeks of 2025 and 112,081 bags **more** than the 5-year average (2021 to 2025) of the first 12 weeks of each year

*Data disclaimer: Potatoes SA does not take responsibility for the accuracy or interpretation of company data re-purposed by 3rd parties*

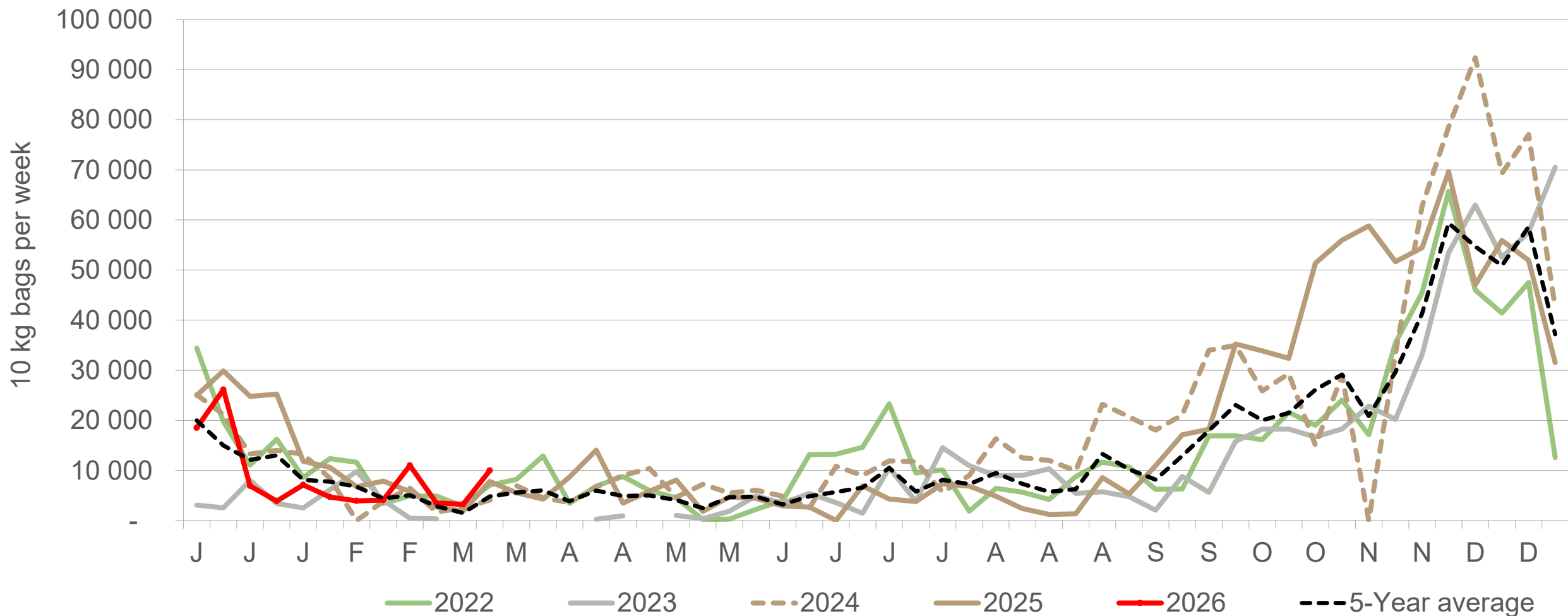
# Gauteng: Amount of 10 kg bags per week sold on FPMs (all classes)



Sold 20% bags **more** than the first 12 weeks of 2025 and 52,706 bags **more** than the 5-year average (2021 to 2025) of the first 12 weeks of each year.

*Data disclaimer: Potatoes SA does not take responsibility for the accuracy or interpretation of company data re-purposed by 3rd parties*

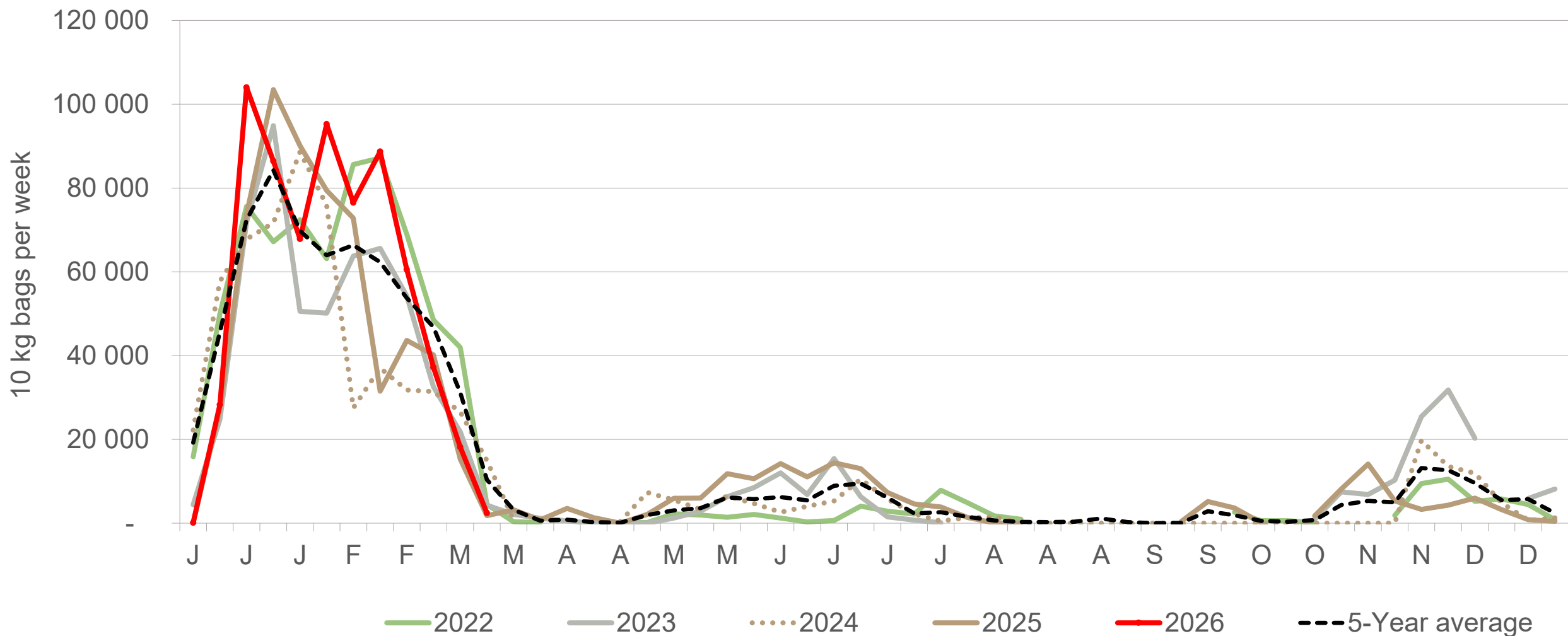
# Eastern Cape: Amount of 10 kg bags per week sold on FPMs (all classes)



Sold 36% bags **less** than the first 12 weeks of 2025 and 1,554 bags **more** than the 5-year average (2021 to 2025) of the 12 weeks of each year.

*Data disclaimer: Potatoes SA does not take responsibility for the accuracy or interpretation of company data re-purposed by 3rd parties*

# Mpumalanga: Amount of 10 kg bags per week sold on FPMs (all classes)



Sold 15% bags **more** than the first 12 weeks of 2025 and 39,588 bags **more** than the 5-year average (2021 to 2025) of the 12 weeks of each year.

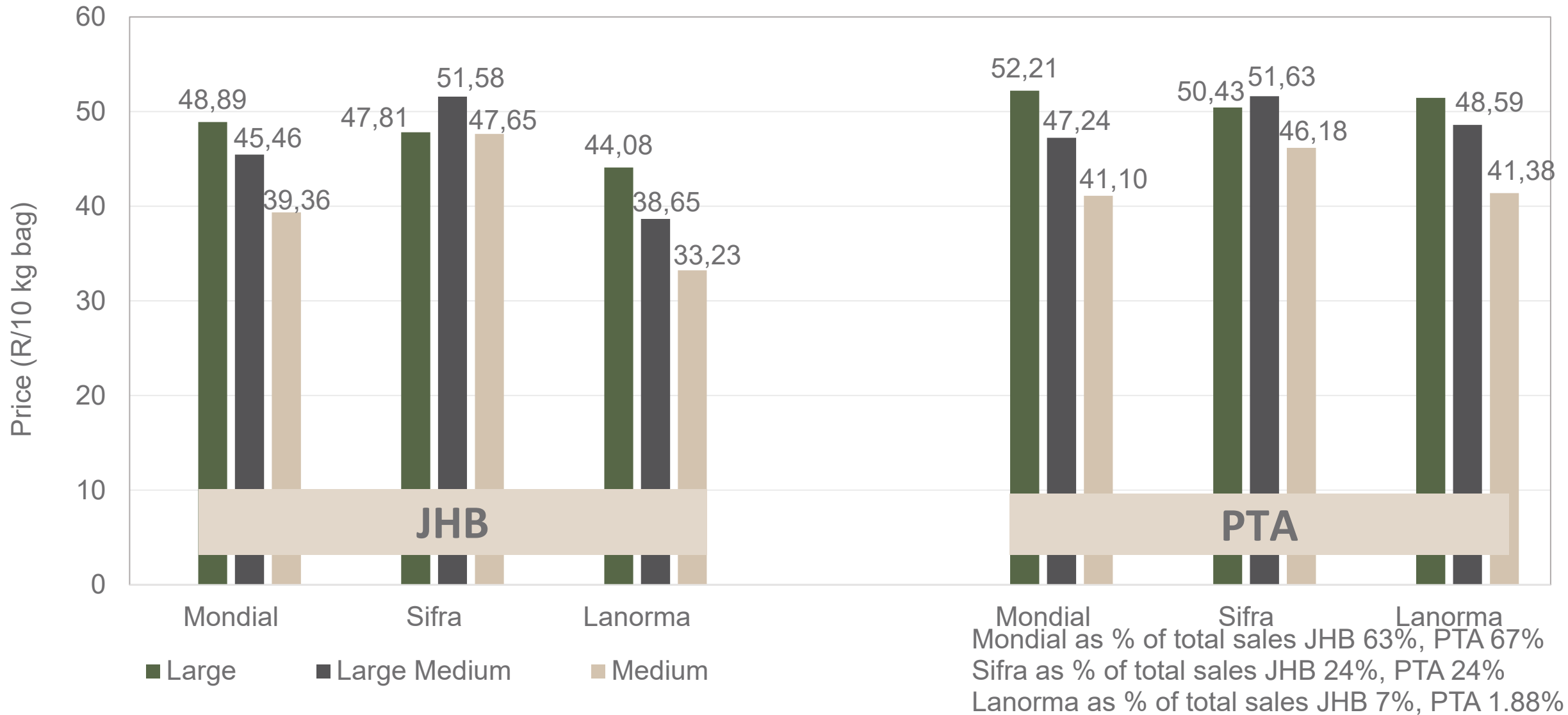
# Average weekly prices and volumes for 10 kg bags of potatoes sold on selected markets from selected production regions



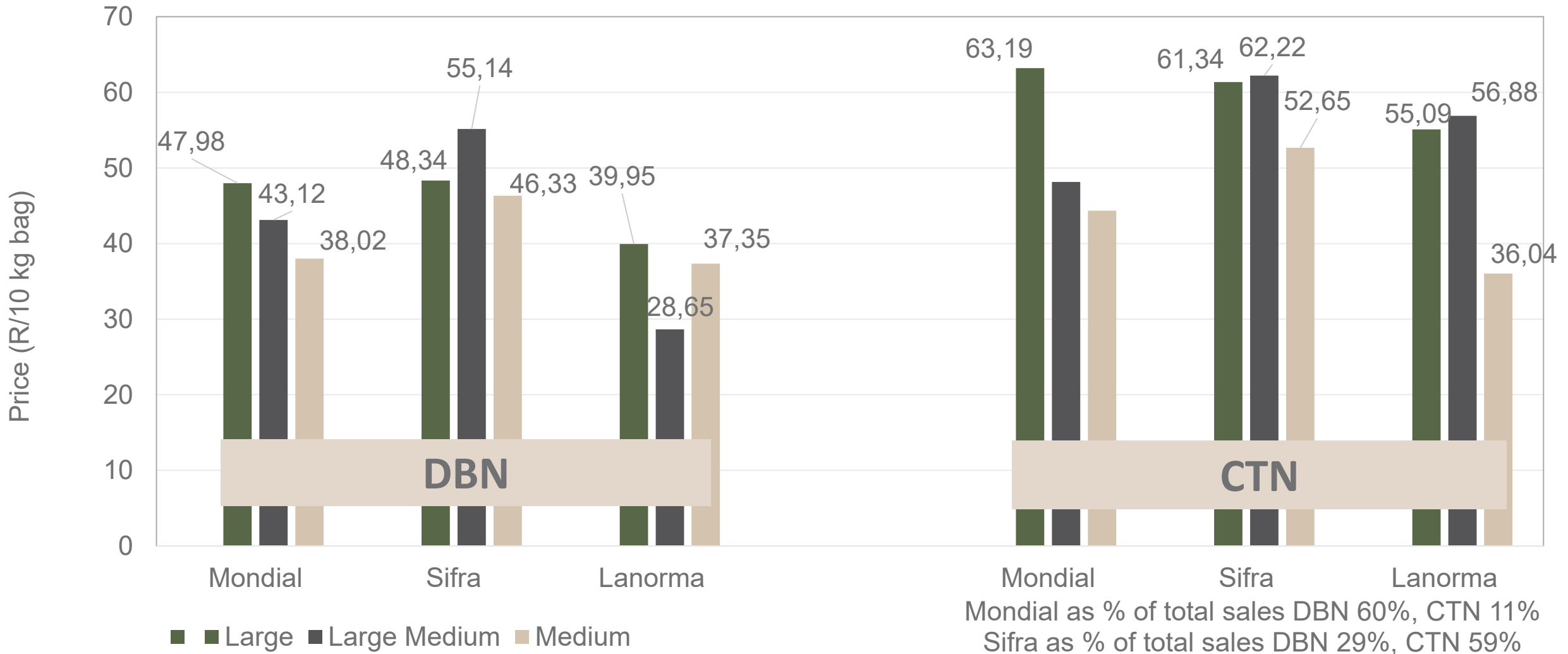
Klas & Grootte	Eastern Free State				Western Free State				North West				South Western Freestate				KwaZulu-Natal				North Eastern Cape				All Regions	
	JOH		PRE		JOH		PRE		JOH		PRE		JOH		PRE		DUR		PIE		POR		EAS		All Markets	
	Volume	Prices	Volume	Prices	Volume	Prices	Volume	Prices	Volume	Prices	Volume	Prices	Volume	Prices	Volume	Prices	Volume	Prices	Volume	Prices	Volume	Prices	Volume	Prices	Volume	Prices
	10kg	R/10kg	10kg	R/10kg	10kg	R/10kg	10kg	R/10kg	10kg	R/10kg	10kg	R/10kg	10kg	R/10kg	10kg	R/10kg	10kg	R/10kg	10kg	R/10kg	10kg	R/10kg	10kg	R/10kg	10kg	R/10kg
1L	108 336	50.58	45 064	53.74	23 548	47.86	8 107	52.76	13 215	49.56	5 784	50.62	5 715	49.78	5 629	54.49	14 681	49.45	1 607	51.07	5 419	37.86	5 125	44.06	448 760	49.29
1L/M	67 377	44.93	47 829	47.16	29 768	45.90	16 636	46.86	22 075	54.02	5 636	55.82	13 282	46.37	8 994	54.40	20 796	41.95	4 911	44.30	6 194	35.57	4 784	37.77	459 809	46.29
1M	39 429	39.50	25 026	40.56	21 381	42.69	9 245	44.84	19 857	51.61	5 637	46.51	8 264	42.01	4 428	46.40	7 846	45.98	1 635	41.40	9 347	37.24	6 212	42.43	339 922	42.84
1S	11 181	23.50	5 175	24.92	2 494	25.32	507	23.39	11 951	27.79	2 326	30.63	1 077	25.71	2 035	27.63	322	28.05	128	27.89	1 804	35.37	3 765	41.96	89 765	28.22
1S/M	7 465	31.70	3 321	31.79	6 648	32.21	2 545	35.51	8 826	39.51	3 219	36.89	2 615	31.65	1 778	32.54	-	-	145	28.12	-	-	183	36.84	73 163	33.65
1XL	5 076	48.34	-	-	-	-	-	-	-	-	-	-	-	-	-	-	-	-	-	-	-	-	-	-	9 146	44.95
1XS	1 491	19.01	-	-	694	13.23	-	-	3 935	31.54	-	-	2 740	29.53	-	-	-	-	-	-	-	-	-	-	9 120	27.07
1XXS	-	-	-	-	-	-	-	-	-	-	-	-	-	-	-	-	-	-	-	-	-	-	-	-	440	47.52
2L	26 092	39.02	18 515	45.80	2 563	38.74	5 495	47.20	4 295	40.72	1 390	44.74	537	40.77	3 066	42.62	2 008	37.97	1 018	42.79	1 592	34.38	1 909	30.17	128 588	41.36
2L/M	17 318	37.59	18 178	41.73	5 359	33.66	9 545	40.54	2 217	43.28	1 886	45.08	1 356	36.76	2 229	36.58	2 390	39.56	677	40.61	220	22.09	2 431	32.11	121 139	39.03
2M	10 089	31.19	10 855	34.94	5 404	29.65	5 572	36.32	3 721	33.75	1 026	44.12	376	30.86	3 050	36.76	3 239	28.19	273	43.22	1 709	32.66	3 948	30.16	99 134	33.12
2S	1 529	21.33	2 961	25.42	825	16.65	663	23.54	-	-	-	559	26.21	-	-	155	32.21	-	110	33.86	629	28.16	2 740	31.22	27 095	24.12
2S/M	1 528	23.66	1 487	24.27	1 196	19.48	1 391	30.38	1 851	27.88	559	28.78	-	-	441	28.98	-	-	-	-	-	-	-	-	20 676	25.31
2XL	-	-	-	-	-	-	-	-	-	-	-	-	-	-	-	-	-	-	-	-	-	-	-	-	330	31.67
2XS	-	-	-	-	-	-	-	-	36	28.61	-	-	-	-	-	-	-	-	-	-	-	-	-	-	974	11.36
2XXS	-	-	-	-	-	-	-	-	-	-	-	-	-	-	-	-	-	-	-	-	-	-	-	-	-	-
3L	9 127	32.63	10 138	36.31	3 625	31.77	1 763	34.98	-	-	-	-	3 590	31.12	1 608	34.94	710	32.00	299	36.40	-	-	-	-	52 492	32.75
3L/M	10 471	27.25	8 248	30.30	393	47.26	3 992	37.86	4 950	37.08	1 330	32.35	-	-	-	-	-	-	-	-	-	-	110	30.00	55 173	31.41
3M	7 256	23.74	8 255	29.35	2 160	22.94	4 706	30.40	6 334	31.31	2 200	29.83	4 531	25.02	3 852	25.00	100	30.00	569	31.12	1 368	25.06	2 456	22.52	75 165	26.50
3S/M	1 175	18.07	2 431	23.91	147	20.00	200	20.93	440	15.75	620	17.12	-	-	-	-	-	-	-	-	-	-	-	-	10 370	20.14
3XS	-	-	-	-	-	-	-	-	-	-	-	-	-	-	-	-	-	-	-	-	-	-	-	-	-	-
3XXS	-	-	-	-	-	-	-	-	-	-	-	-	-	-	-	-	-	-	-	-	-	-	-	-	-	-
4L	-	-	4 191	29.33	-	-	700	30.00	-	-	-	-	-	-	-	-	304	30.63	-	-	-	-	-	-	7 064	28.99
4L/M	-	-	16	20.00	-	-	-	-	-	-	-	-	-	-	-	-	-	110	34.14	-	-	-	-	-	2 994	24.16
4M	-	-	2 439	23.10	-	-	-	-	-	-	-	-	-	-	-	-	-	-	-	-	250	13.20	19	27.63	8 230	22.25
4S	-	-	76	19.21	-	-	-	-	-	-	248	12.19	-	-	-	-	-	-	-	-	-	-	-	-	408	13.04
4S/M	-	-	135	24.26	-	-	-	-	-	-	-	-	-	-	-	-	-	-	-	-	-	-	-	-	224	23.22
Total	325 132	42.05	215 164	42.48	106 205	41.01	71 447	42.22	103 703	43.54	33 387	42.98	44 083	39.64	39 421	42.33	52 512	43.17	11 482	43.01	29 006	34.95	33 955	36.47	2 063 330	41.07

Data disclaimer: Potatoes SA does not take responsibility for the accuracy or interpretation of company data re-purposed by 3rd parties

# PTA & JHB markets: Average Prices - Different Sizes (only 10 kg bags)



# DBN & CTN markets: Average Prices - Different Sizes (only 10 kg bags)




Mondial as % of total sales DBN 60%, CTN 11%  
 Sifra as % of total sales DBN 29%, CTN 59%  
 Lanorma as % of total sales DBN 3.04%, CTN 24%

# Thank you for your time


Feel free to contact us

 [Lebo@potatoes.co.za](mailto:Lebo@potatoes.co.za)

[Jodie@potatoes.co.za](mailto:Jodie@potatoes.co.za)

 +27 (0)12 349 1906

 6 De Havilland Crescent  
Persequor Techno Park  
Persequor Park  
Pretoria

 [www.potatoes.co.za](http://www.potatoes.co.za)



Potatoes  
Aartappels SA