



## Weekly Market Information

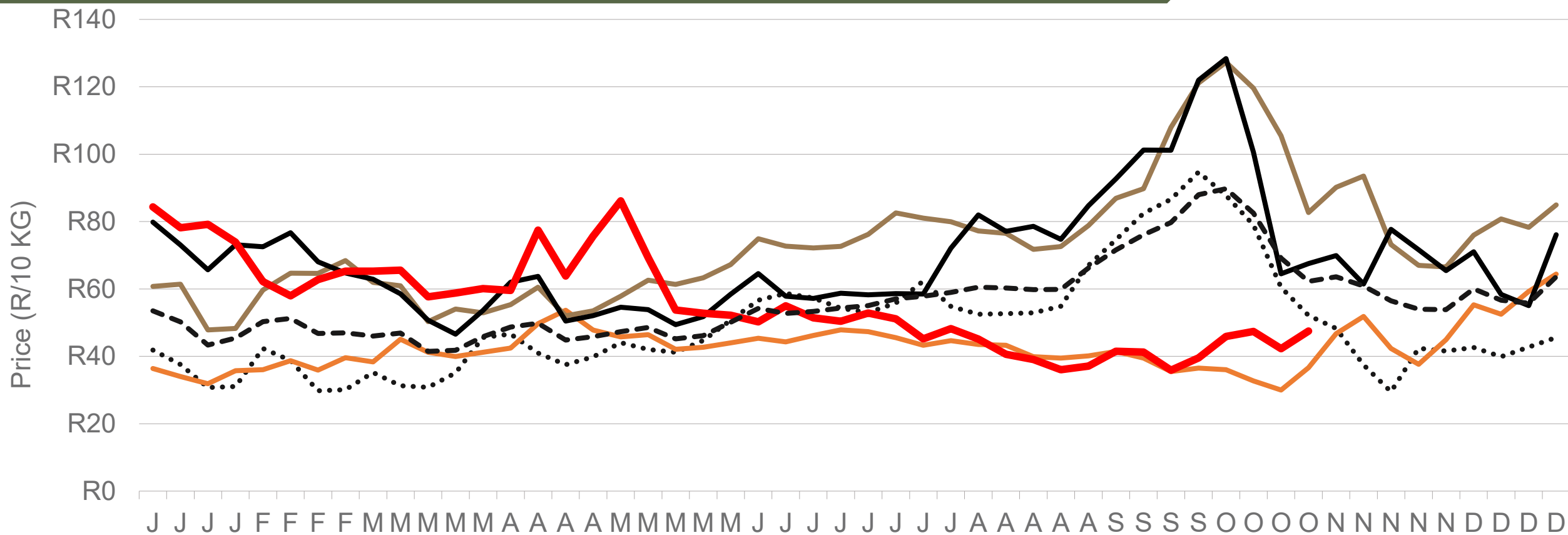
24 October 2025



Potatoes  
Aartappels SA

[www.potatoes.co.za](http://www.potatoes.co.za)

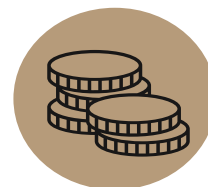
# Average weekly price – all markets & all classes



Number of bags sold

**2%**

(Week on Week)



Average weekly price

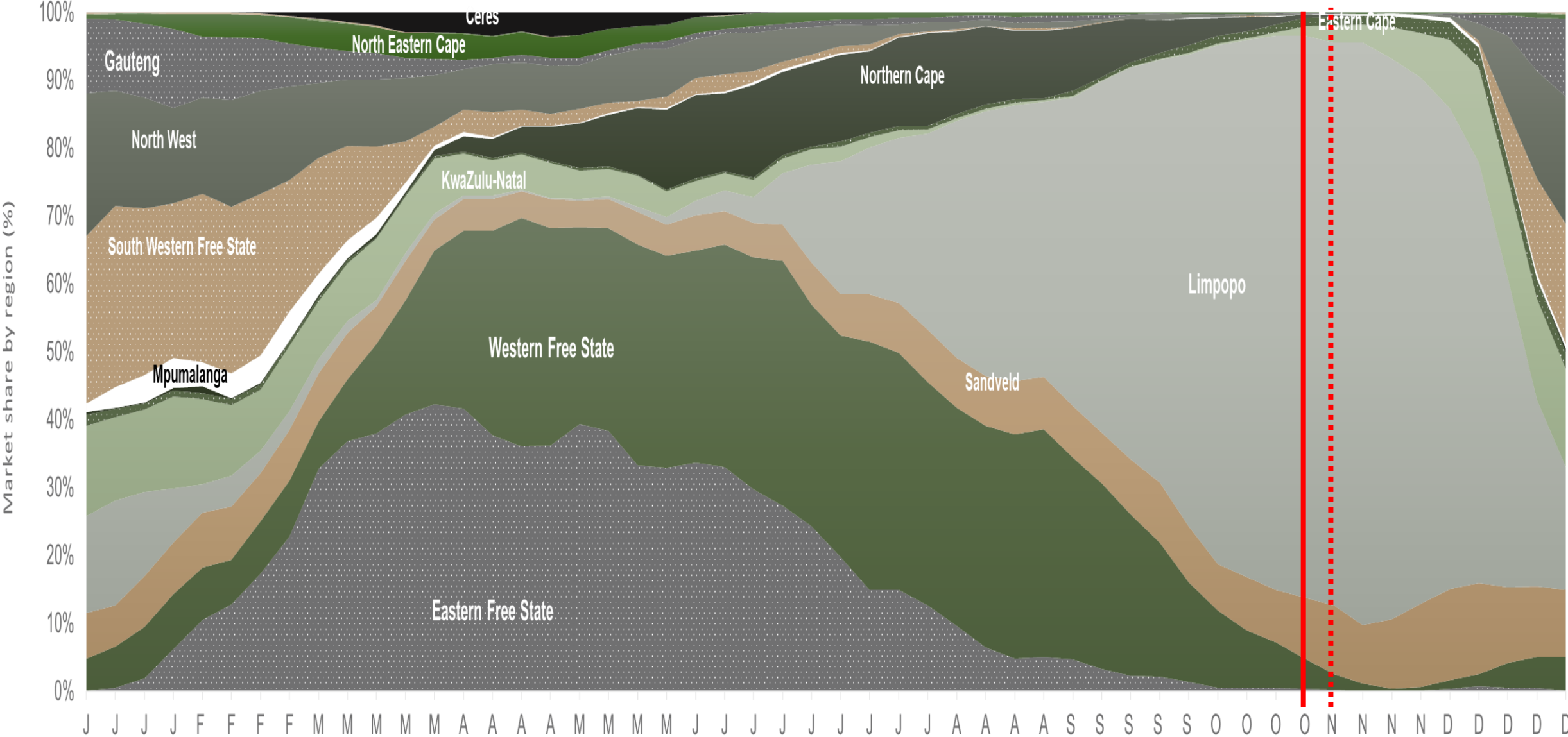
**12%**

(Week on week)



Data disclaimer: Potatoes SA does not take responsibility for the accuracy or interpretation of company data re-purposed by 3rd parties

# Market share of regions on fresh produce markets 2019-2024



Data disclaimer: Potatoes SA does not take responsibility for the accuracy or interpretation of company data re-purposed by 3rd parties



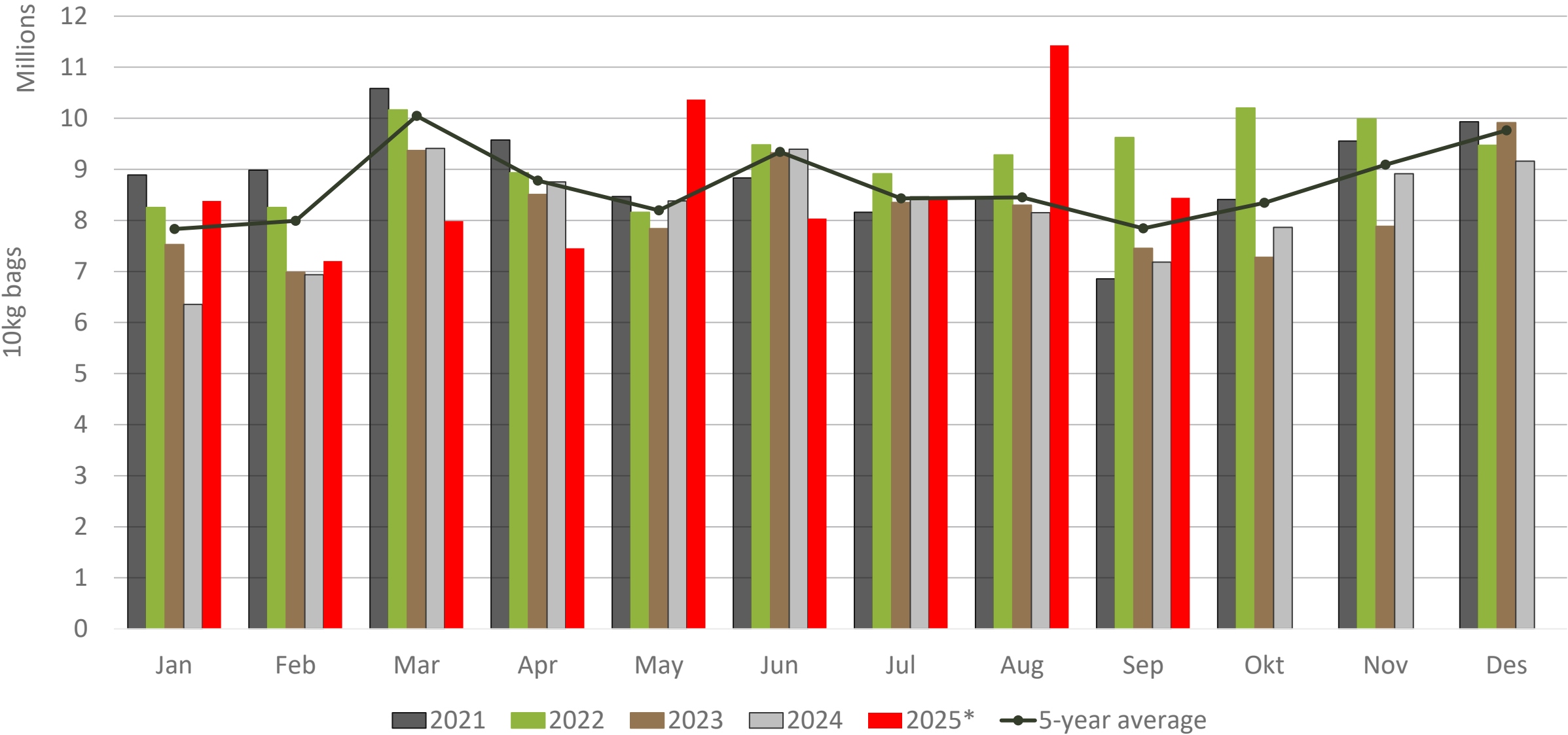
# Cumulative total number of 10 kg bags sold on markets



Sold 1,173,047 bags **more** than the **5-year average** (2020 to 2024) of the first 43 weeks of 2025

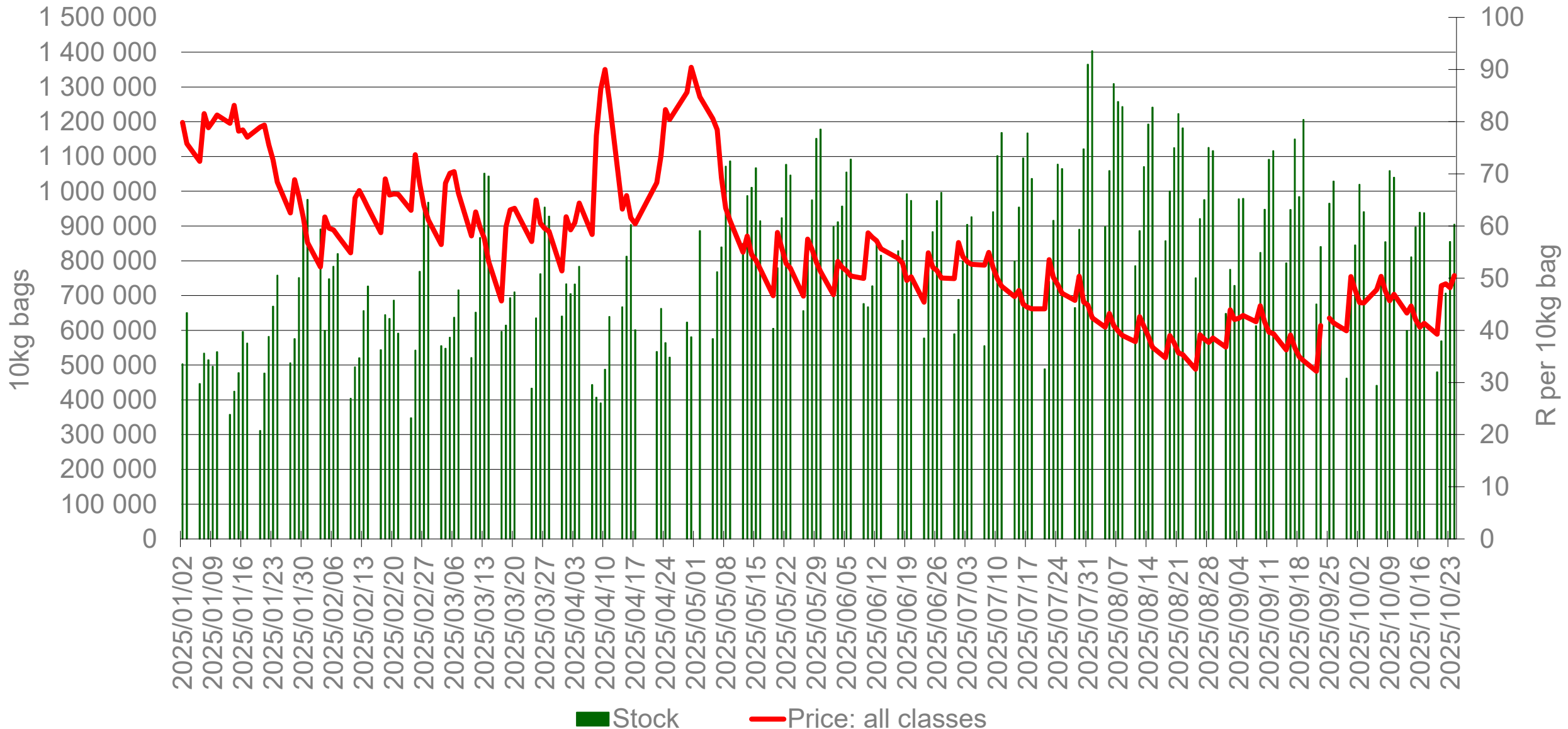
*Data disclaimer: Potatoes SA does not take responsibility for the accuracy or interpretation of company data re-purposed by 3rd parties*

# Monthly sales volumes on markets: Potatoes



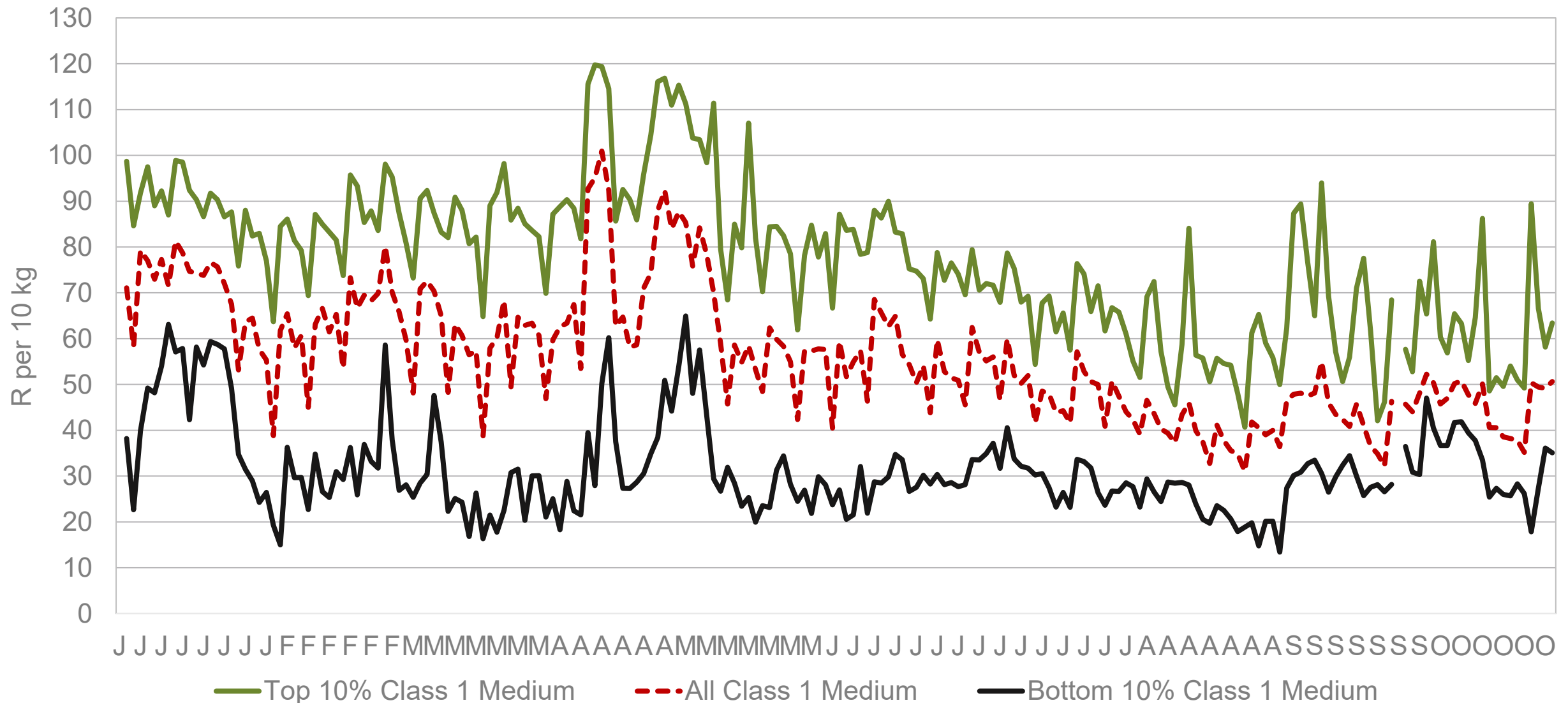
Data disclaimer: Potatoes SA does not take responsibility for the accuracy or interpretation of company data re-purposed by 3rd parties

# RSA daily price versus daily available stocks (all classes & all sizes)



Data disclaimer: Potatoes SA does not take responsibility for the accuracy or interpretation of company data re-purposed by 3rd parties

# JHB market daily : Top 10% versus bottom 10% prices – Class 1 Medium (since January 2025)



Data disclaimer: Potatoes SA does not take responsibility for the accuracy or interpretation of company data re-purposed by 3rd parties

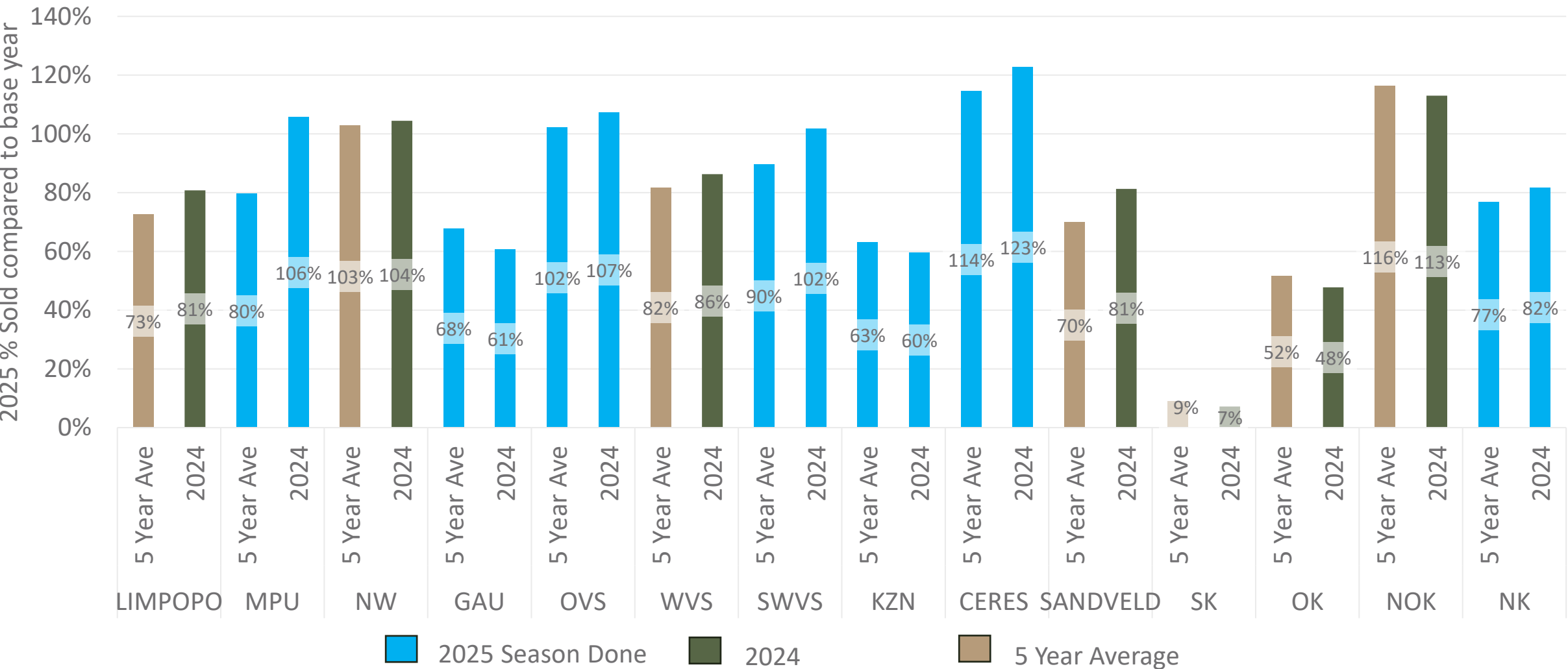
# FPM Sales pace comparison per region

## 2025 compared to 5-year average and 2024



The *FPM Sales pace* compares the current year’s cumulative volumes sold on the FPM with the previous year and the five-year average. Differences in these trends reflect variations in hectares planted, regional weather conditions, yield performance, and market timing. Blue indicates regions that are done delivering for this season. Seasons are based on calendar year.

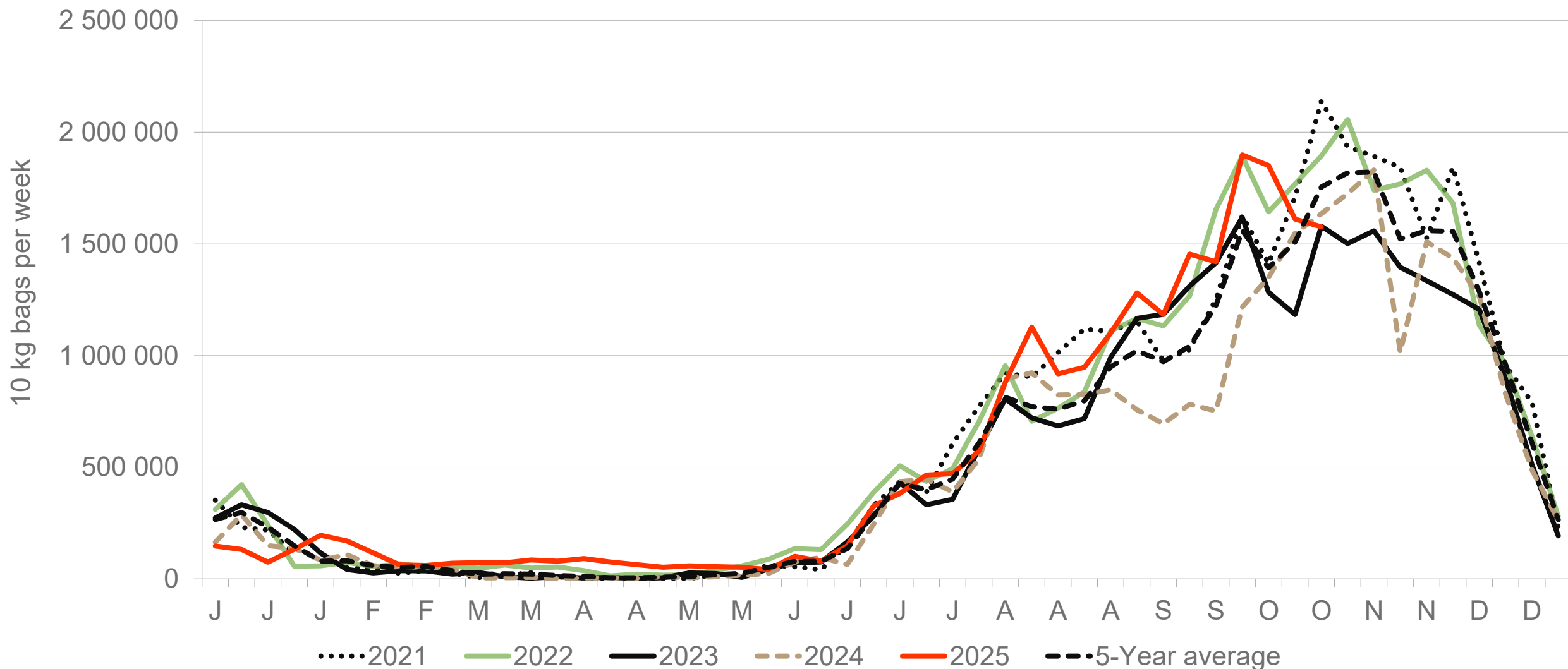
*Note: This comparison is based on total volumes sold, not on hectares planted*



Data disclaimer: Potatoes SA does not take responsibility for the accuracy or interpretation of company data re-purposed by 3rd parties

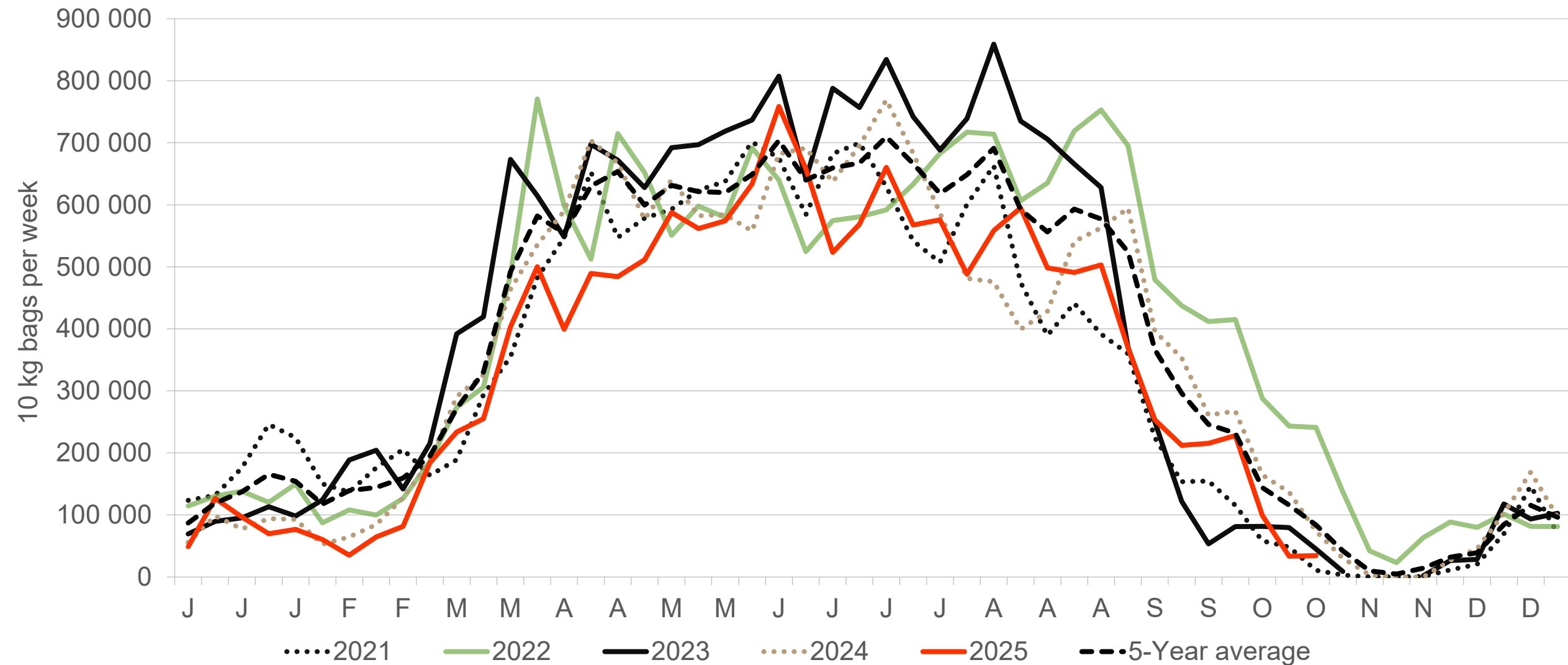


# Limpopo: Amount of 10 kg bags per week sold on FPMs (all classes)



Sold 31% bags more than the first 43 weeks of 2024 and 3,207,302bags more than the 5-year average (2020 to 2024) of the first 43 weeks of each year

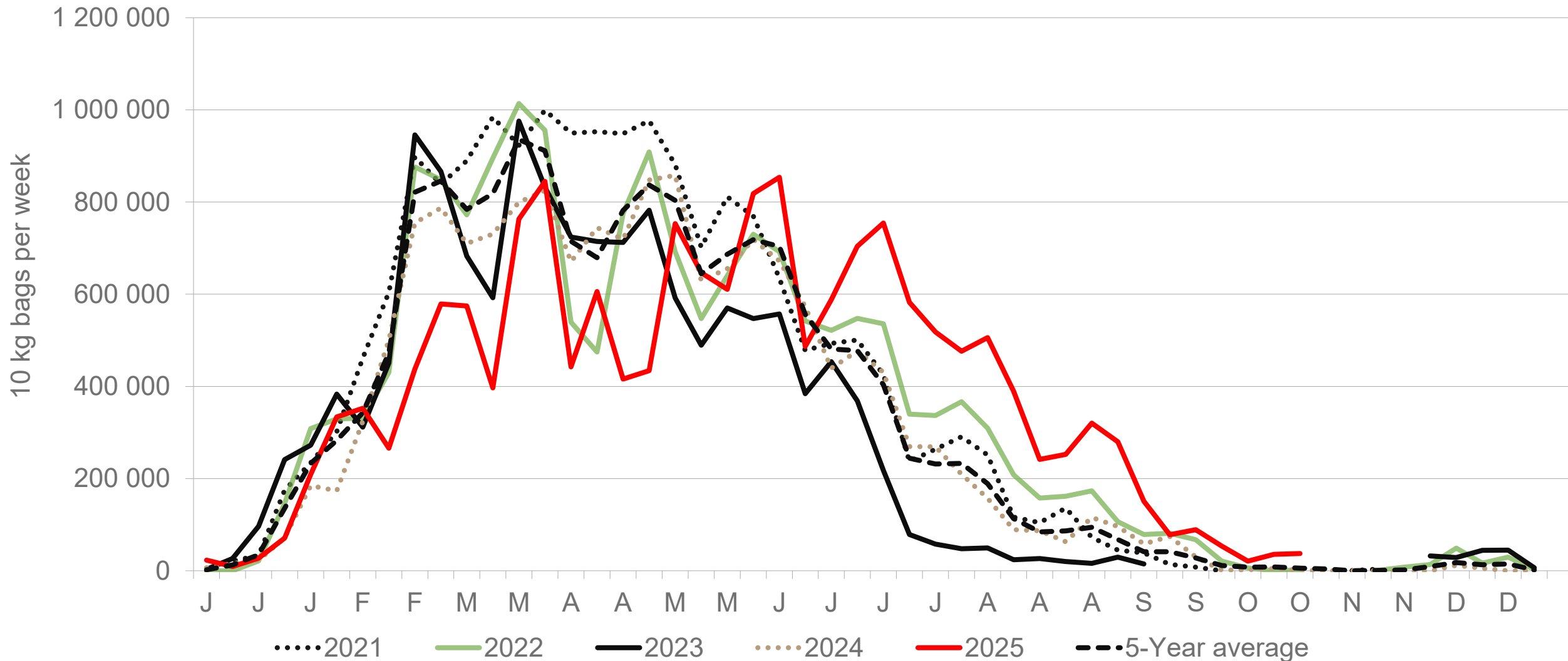
# Western Free State : Amount of 10 kg bags per week sold on FPMs (all classes)



Sold 11% bags less than the first 43 weeks of 2024 and 3,014,500 bags less than the 5-year average (2020 to 2024) of the first 43 weeks of each year.

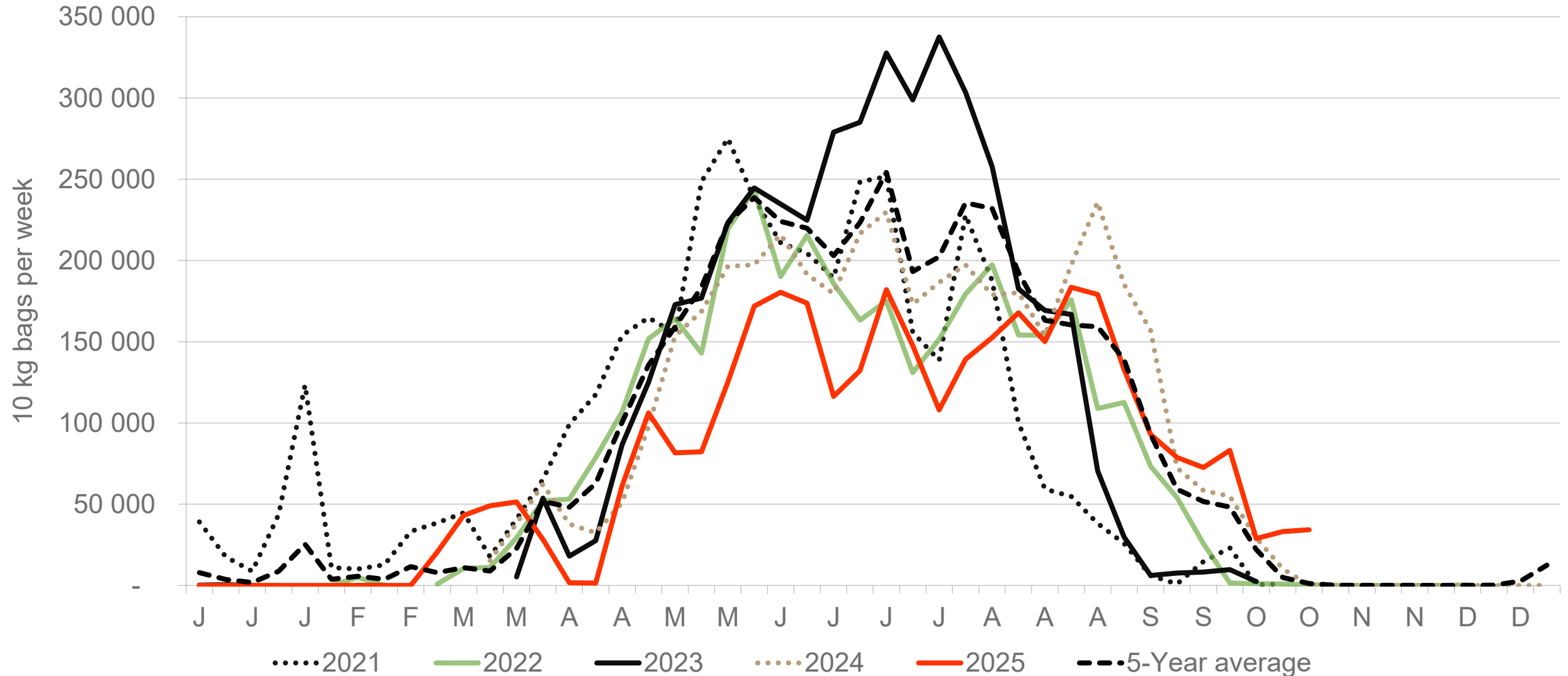
*Data disclaimer: Potatoes SA does not take responsibility for the accuracy or interpretation of company data re-purposed by 3rd parties*

# Eastern Free State: Amount of 10 kg bags per week sold on FPMs (all classes)



Sold 7% bags more than the first 43 weeks of 2024 and 424,278 more than the 5-year average (2020 to 2024) of the first 43 weeks of each year.

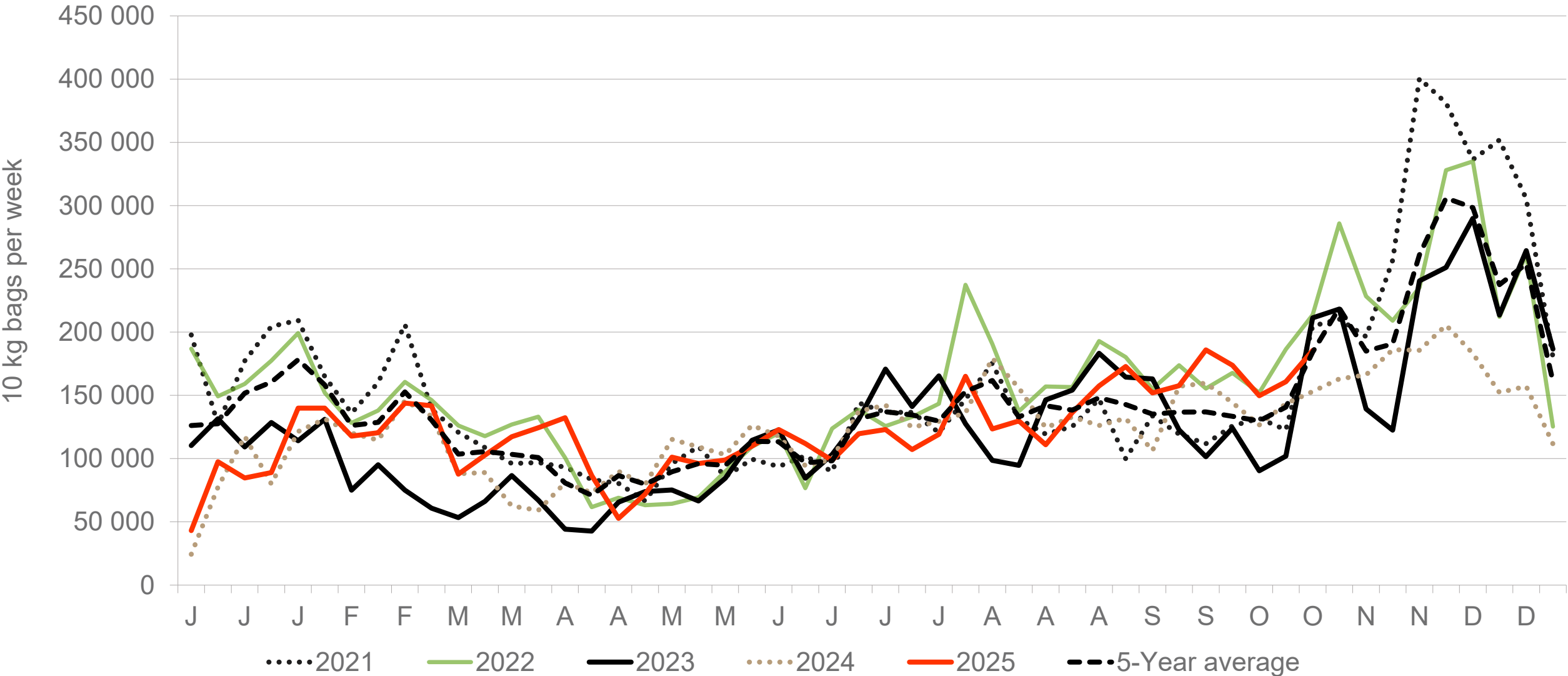
# Northern Cape: Amount of 10 kg bags per week sold on FPMs (all classes)



Sold 18% bags less than the first 43 weeks of 2024 and 1,014,980 bags less than the 5-year average (2020 to 2024) of the first 43 weeks of each year.

*Data disclaimer: Potatoes SA does not take responsibility for the accuracy or interpretation of company data re-purposed by 3rd parties*

# Sandveld: Amount of 10 kg bags per week sold on FPMs (all classes)

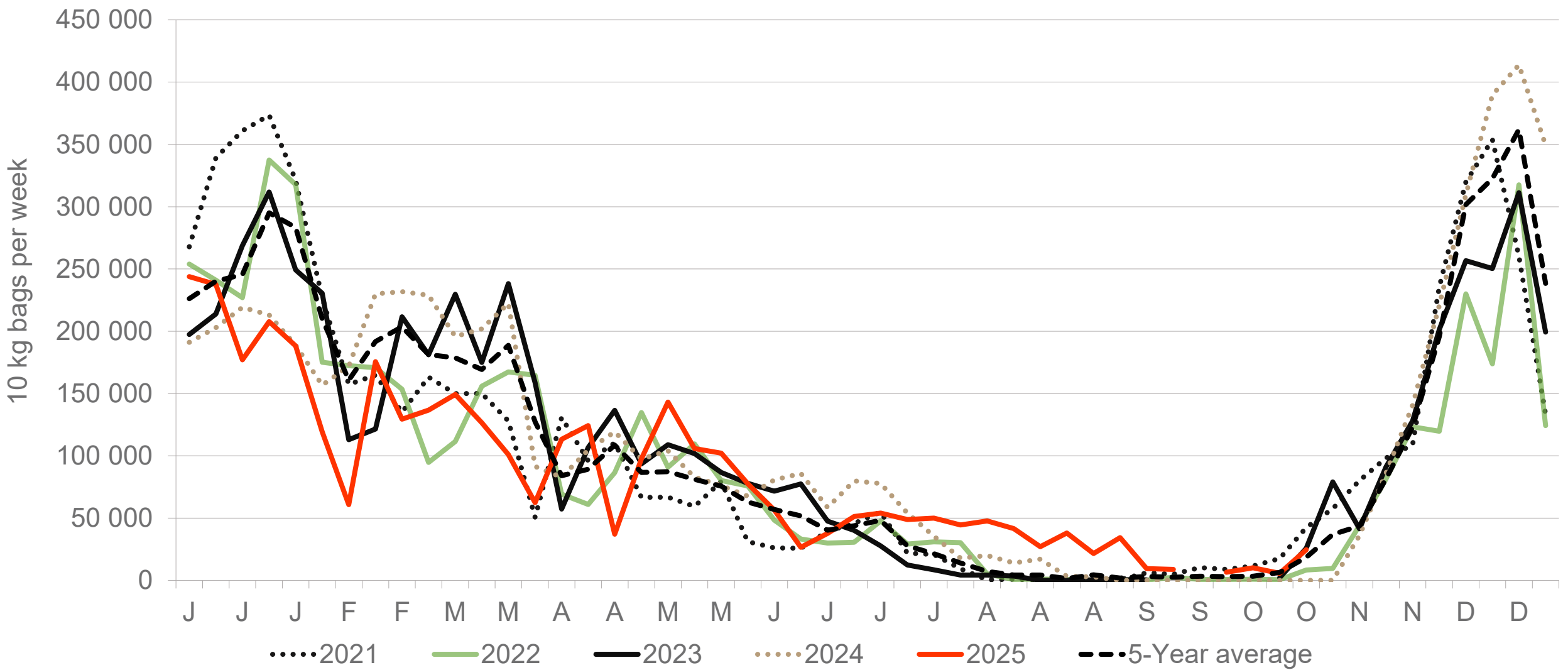


Sold 6% bags more than the first 43 weeks of 2024 and 159,222 bags less than the 5-year average (2020 to 2024) of the first 43 weeks of each year.

*Data disclaimer: Potatoes SA does not take responsibility for the accuracy or interpretation of company data re-purposed by 3rd parties*



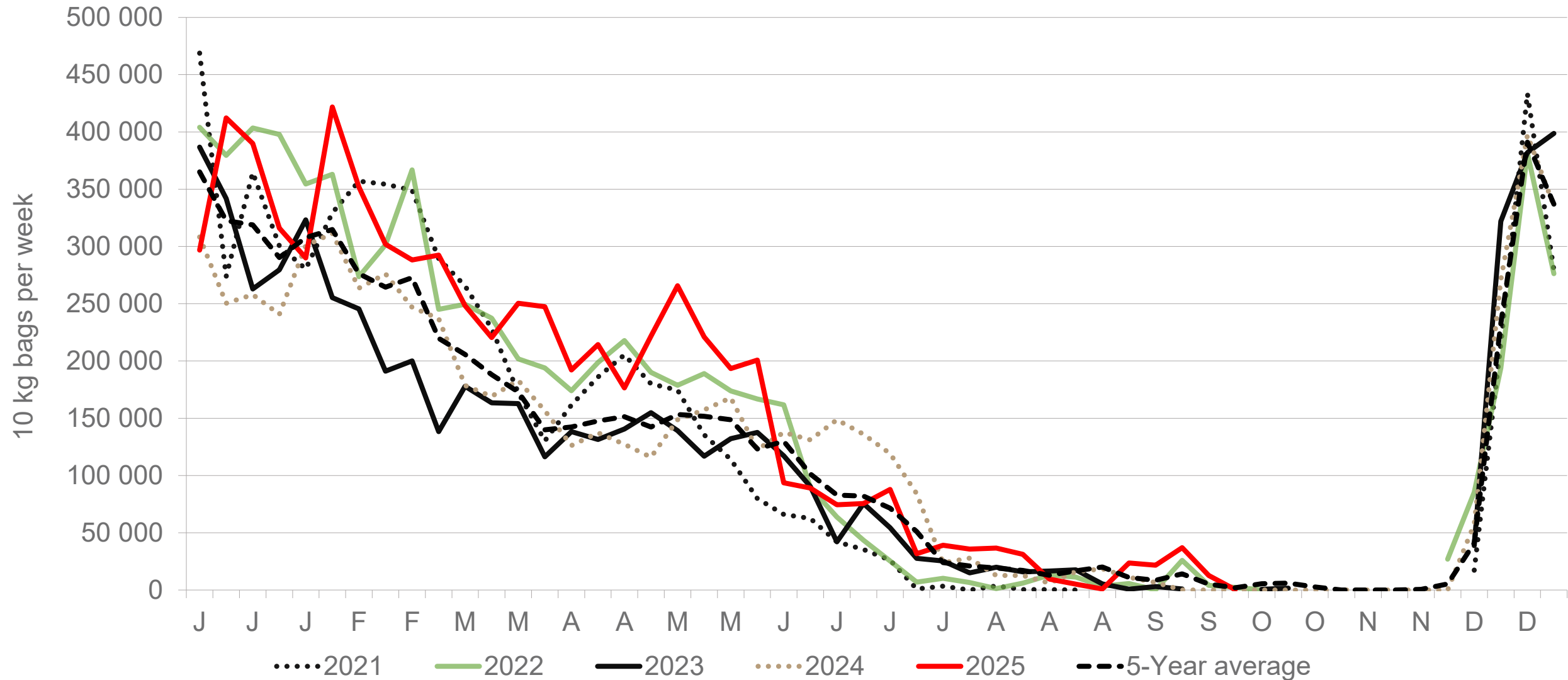
# KwaZulu-Natal: Amount of 10 kg bags per week sold on FPMs (all classes)



Sold 12% bags less than the first 43 weeks of 2024 and 383,822 bags less than the 5-year average (2020 to 2024) of the first 43 weeks of each year.

*Data disclaimer: Potatoes SA does not take responsibility for the accuracy or interpretation of company data re-purposed by 3rd parties*

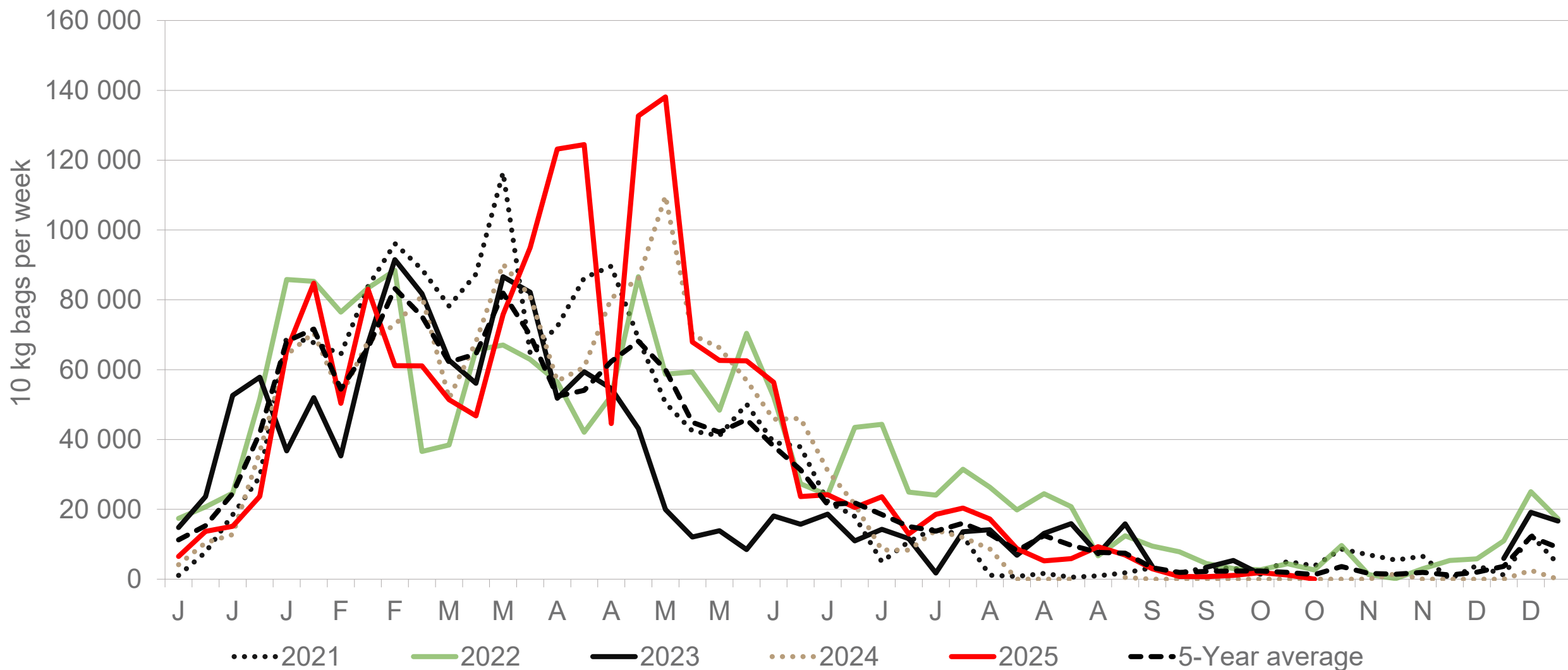
# North-West: Amount of 10 kg bags per week sold on FPMs (all classes)



Sold 25% bags more than the first 43 weeks of 2024 and 1,196,717 more than the 5-year average (2020 to 2024) of the first 43 weeks of each year.

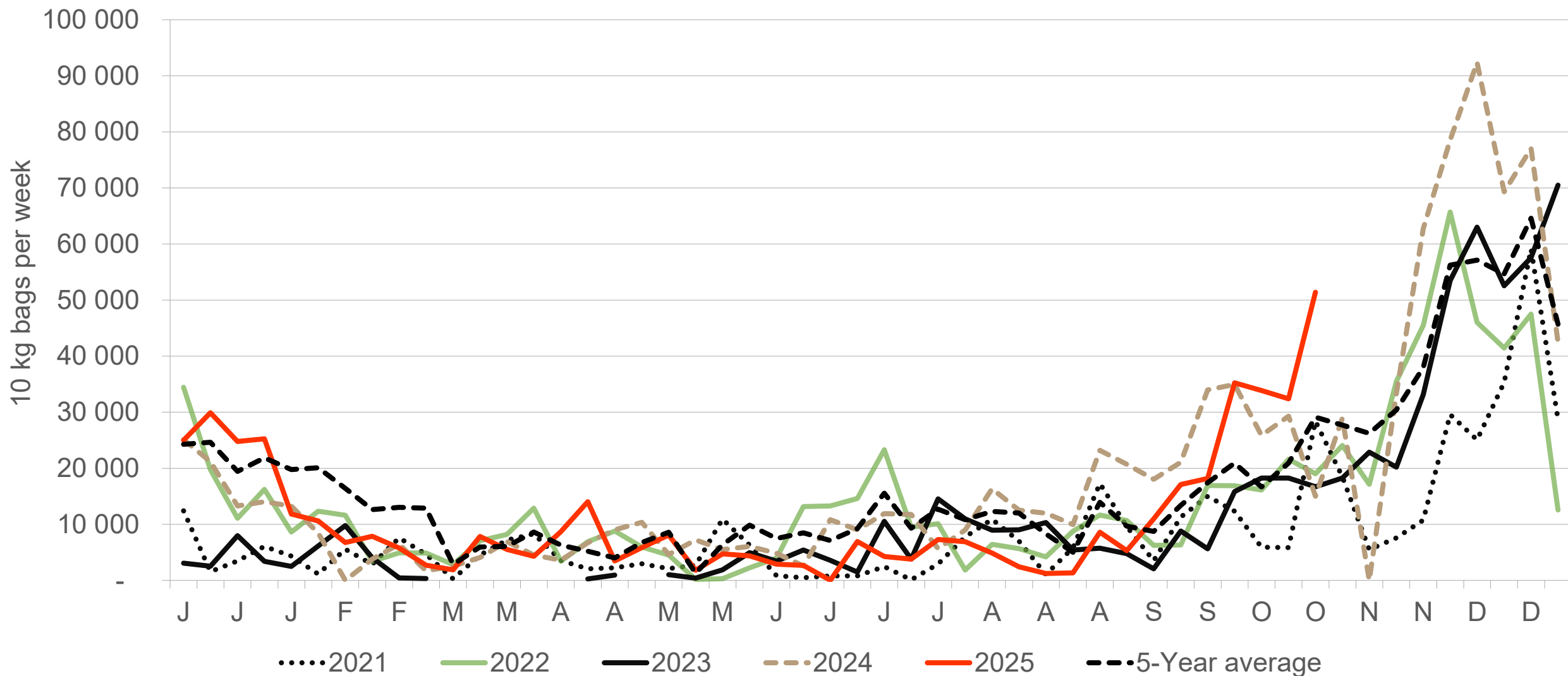
*Data disclaimer: Potatoes SA does not take responsibility for the accuracy or interpretation of company data re-purposed by 3rd parties*

# North Eastern Cape: Amount of 10 kg bags per week sold on FPMs (all classes)



Sold 13% bags more than the first 43 weeks of 2024 and 282,709 bags more than the 5-year average (2020 to 2024) of the first 43 weeks of each year.

# Eastern Cape: Amount of 10 kg bags per week sold on FPMs (all classes)



Sold 7% bags less than the first 43 weeks of 2024 and 16,710 bags more than the 5-year average (2020 to 2024) of the 43 weeks of each year.

# Average weekly prices and volumes for 10 kg bags of potatoes sold on selected markets from selected production regions

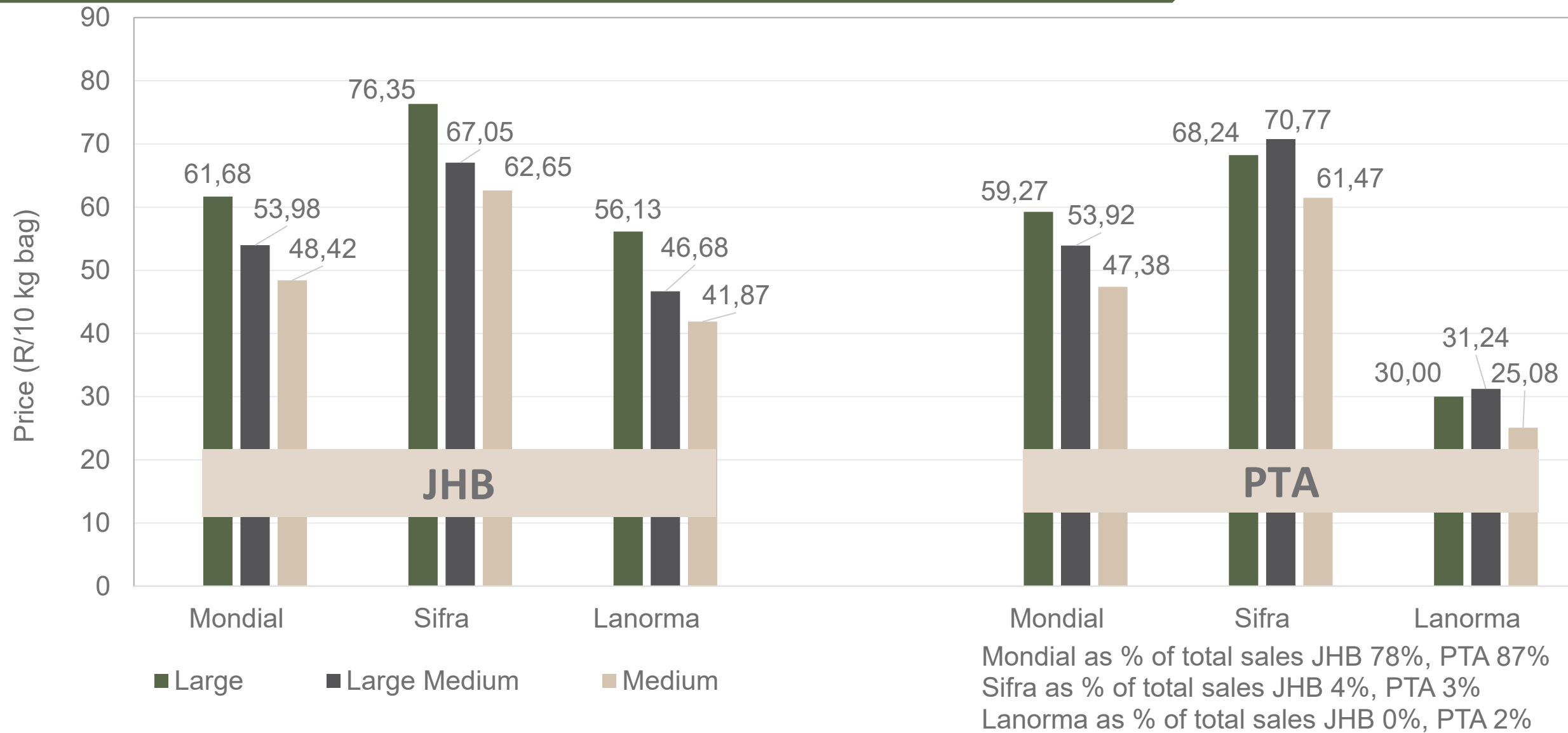


	Limpopo												Sandveld		KwaZulu-Natal				Eastern Cape				All Regions	
Klas & Grootte	JOH		PRE		DUR		SPR		BLO		KLE		CAP		DUR		PIE		POR		EAS		All Markets	
	Volume	Prices	Volume	Prices	Volume	Prices	Volume	Prices	Volume	Prices	Volume	Prices	Volume	Prices	Volume	Prices	Volume	Prices	Volume	Prices	Volume	Prices	Volume	Prices
	10kg	R/10kg	10kg	R/10kg	10kg	R/10kg	10kg	R/10kg	10kg	R/10kg	10kg	R/10kg	10kg	R/10kg	10kg	R/10kg	10kg	R/10kg	10kg	R/10kg	10kg	R/10kg	10kg	R/10kg
	10kg	R/10kg	10kg	R/10kg	10kg	R/10kg	10kg	R/10kg	10kg	R/10kg	10kg	R/10kg	10kg	R/10kg	10kg	R/10kg	10kg	R/10kg	10kg	R/10kg	10kg	R/10kg	10kg	R/10kg
1L	172 265	61.36	75 365	59.49	16 939	61.44	22 642	57.06	8 820	71.32	6 940	63.75	22 011	60.59	3 126	56.92	2 699	62.95	6 112	59.50	2 776	63.95	377 044	60.55
1L/M	178 124	54.02	86 036	54.45	41 260	57.39	34 209	48.09	10 915	65.07	16 411	54.68	31 888	53.80	5 527	55.31	3 622	60.10	1 932	56.53	5 054	56.80	458 526	54.09
1M	181 155	49.06	78 780	48.57	49 486	53.10	24 008	41.38	6 461	60.55	11 947	47.85	50 209	48.22	3 601	53.21	2 565	55.99	9 423	52.03	6 311	54.19	470 041	49.02
1S	79 982	26.53	25 706	26.83	30 471	28.05	8 709	25.71	3 398	36.72	5 500	32.26	17 065	36.05	-	-	691	33.01	3 595	36.10	1 986	41.15	194 039	28.41
1S/M	50 412	37.13	24 586	33.40	7 015	55.58	5 008	35.71	1 873	52.45	1 681	36.34	3 162	37.78	440	50.00	440	50.58	2 214	39.71	36	40.00	110 717	37.74
1XL	2 376	65.85	-	-	-	-	-	-	-	-	-	-	-	-	-	-	-	-	-	-	-	-	3 596	56.88
1XS	30 639	19.88	-	-	-	-	-	-	-	-	-	-	-	-	-	-	-	-	-	-	-	-	31 629	19.65
1XXS	-	-	-	-	-	-	-	-	-	-	-	-	-	-	-	-	-	-	-	-	-	-	-	-
2L	25 921	51.09	11 214	51.28	1 671	49.23	3 634	49.67	1 502	57.97	2 625	58.80	8 057	53.37	-	-	539	56.87	697	55.00	260	52.12	66 806	50.98
2L/M	19 493	43.52	10 027	47.28	3 123	54.78	2 840	46.39	1 828	58.45	3 598	50.68	8 923	50.20	-	-	489	52.37	686	50.00	692	56.50	64 165	45.53
2M	19 262	39.27	9 907	40.77	5 471	47.77	1 779	37.27	458	32.07	2 514	43.95	17 137	39.92	-	-	385	45.56	3 683	41.35	1 807	46.35	72 124	39.92
2S	5 362	23.10	1 766	20.03	1 065	32.48	455	23.08	-	-	781	28.73	6 212	28.36	-	-	151	25.00	373	30.80	110	39.18	18 790	25.49
2S/M	4 247	31.74	1 358	28.70	1 813	36.66	167	32.28	665	45.85	207	38.42	388	30.93	-	-	-	-	-	-	-	-	12 188	29.77
2XL	107	57.86	-	-	-	-	-	-	-	-	-	-	-	-	-	-	-	-	-	-	-	-	589	51.43
2XS	-	-	-	-	-	-	-	-	-	-	-	-	-	-	-	-	-	-	-	-	-	-	1 285	9.81
2XXS	-	-	-	-	-	-	-	-	-	-	-	-	-	-	-	-	-	-	-	-	-	-	-	-
3L	2 958	41.18	831	39.95	320	41.22	734	41.56	-	-	210	40.00	-	-	-	-	-	-	-	-	-	-	24 396	36.66
3L/M	5 097	37.12	1 278	43.88	440	55.00	220	40.00	105	65.48	110	45.86	990	50.00	-	-	-	-	-	-	-	-	15 397	32.33
3M	10 438	35.45	1 912	37.37	717	33.83	657	28.59	110	65.00	791	41.85	2 987	39.31	-	-	386	31.22	1 059	32.57	1 707	31.88	30 572	34.18
3S/M	-	-	-	-	-	-	60	35.00	-	-	-	-	-	-	-	-	-	-	-	-	-	-	800	8.88
3XS	-	-	-	-	-	-	-	-	-	-	-	-	-	-	-	-	-	-	-	-	-	-	-	-
3XXS	-	-	-	-	-	-	-	-	-	-	-	-	-	-	-	-	-	-	-	-	-	-	-	-
4L	-	-	-	-	-	-	-	-	-	-	-	-	-	-	-	-	-	-	-	-	-	-	880	21.26
4L/M	-	-	-	-	-	-	-	-	-	-	-	-	-	-	-	-	-	-	-	-	-	-	2 821	16.57
4M	-	-	140	1.00	-	-	98	15.16	-	-	-	-	-	-	-	-	-	-	-	-	-	-	1 479	14.97
4S	-	-	-	-	-	-	-	-	-	-	-	-	-	-	-	-	-	-	-	-	-	-	87	11.49
4S/M	-	-	-	-	-	-	-	-	-	-	-	-	-	-	-	-	-	-	-	-	-	-	247	19.43
Total	787 840	47.87	334 587	48.85	164 604	48.89	106 748	45.05	36 282	60.98	54 260	49.64	183 436	45.84	12 694	54.93	11 967	55.65	30 415	48.16	20 977	51.99	1 992 326	47.50

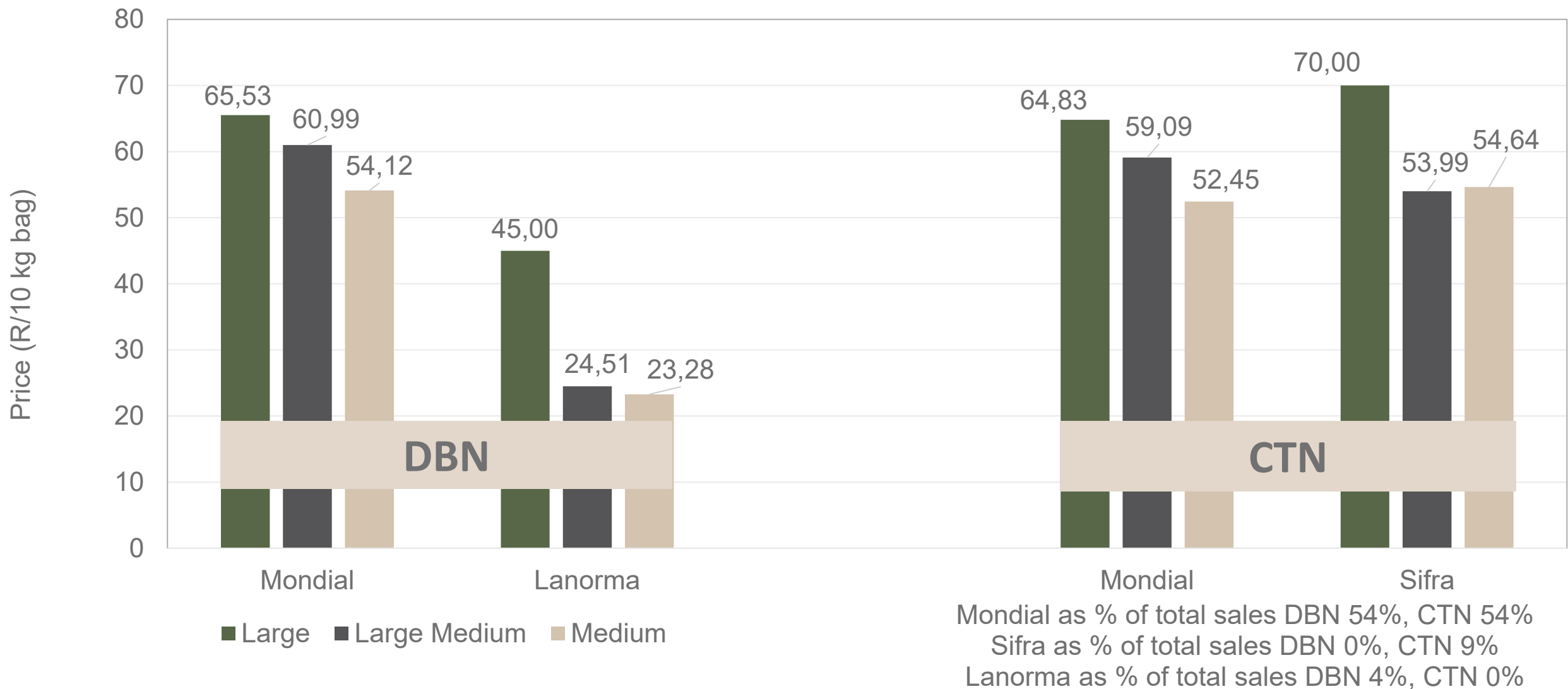
Data disclaimer: Potatoes SA does not take responsibility for the accuracy or interpretation of company data re-purposed by 3rd parties



PTA & JHB markets: Average Prices - Different Sizes (only 10 kg bags)



DBN & CTN markets: Average Prices - Different Sizes (only 10 kg bags)



Data disclaimer: Potatoes SA does not take responsibility for the accuracy or interpretation of company data re-purposed by 3rd parties

# Thank you for your time

**Feel free to contact us**



Dikgetho@potatoes.co.za  
Jodie@potatoes.co.za



+27 (0)12 349 1906



6 De Havilland Crescent  
Persequor Techno Park  
Persequor Park  
Pretoria



www.potatoes.co.za



**Potatoes  
Aartappels SA**