



Weekly Market Information

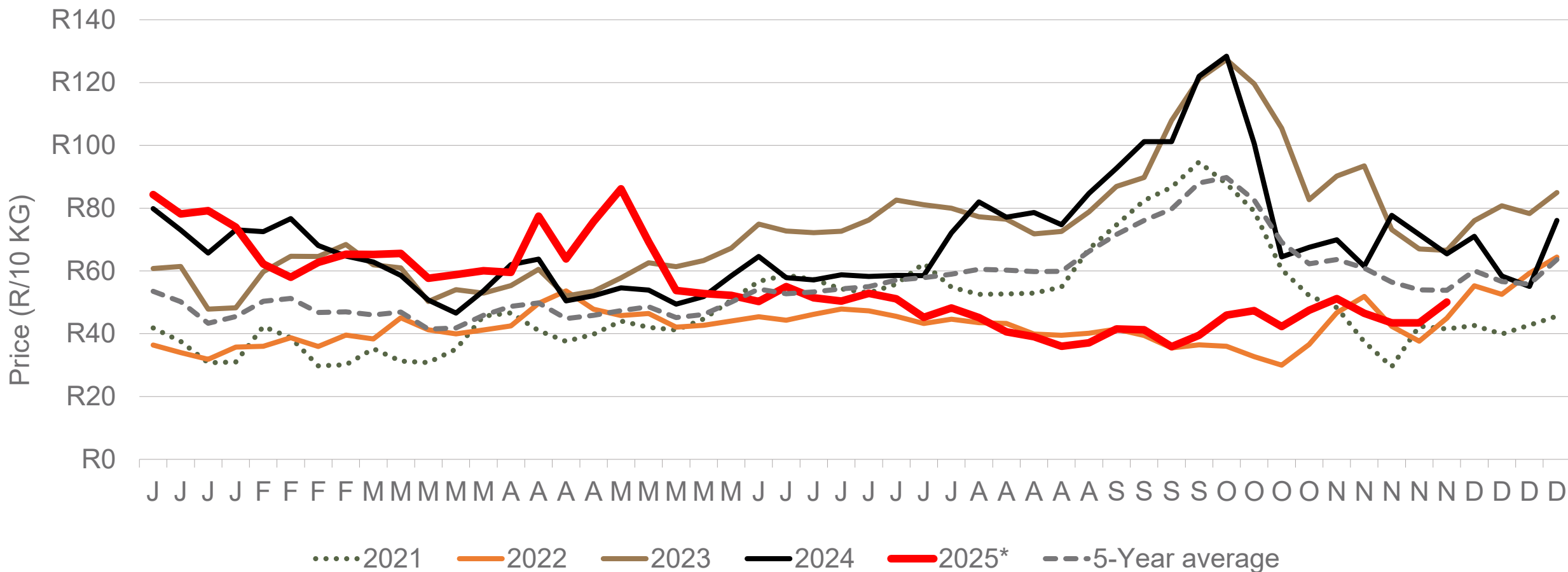
28 November 2025



Potatoes
Aartappels SA

www.potatoes.co.za

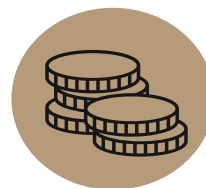
Average weekly price – all markets & all classes



Number of bags sold

21%

(Week on Week)



Average weekly price

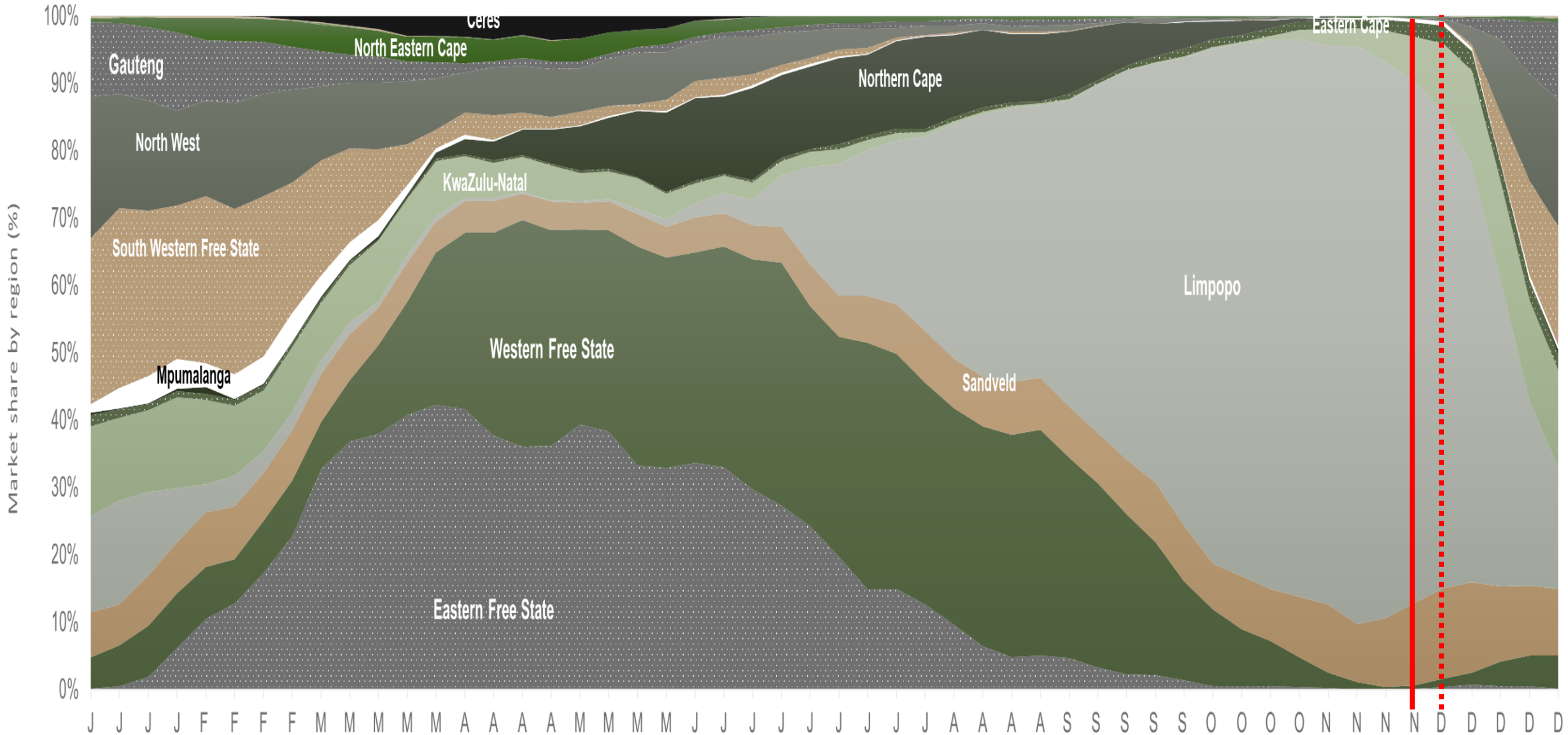
15%

(Week on week)



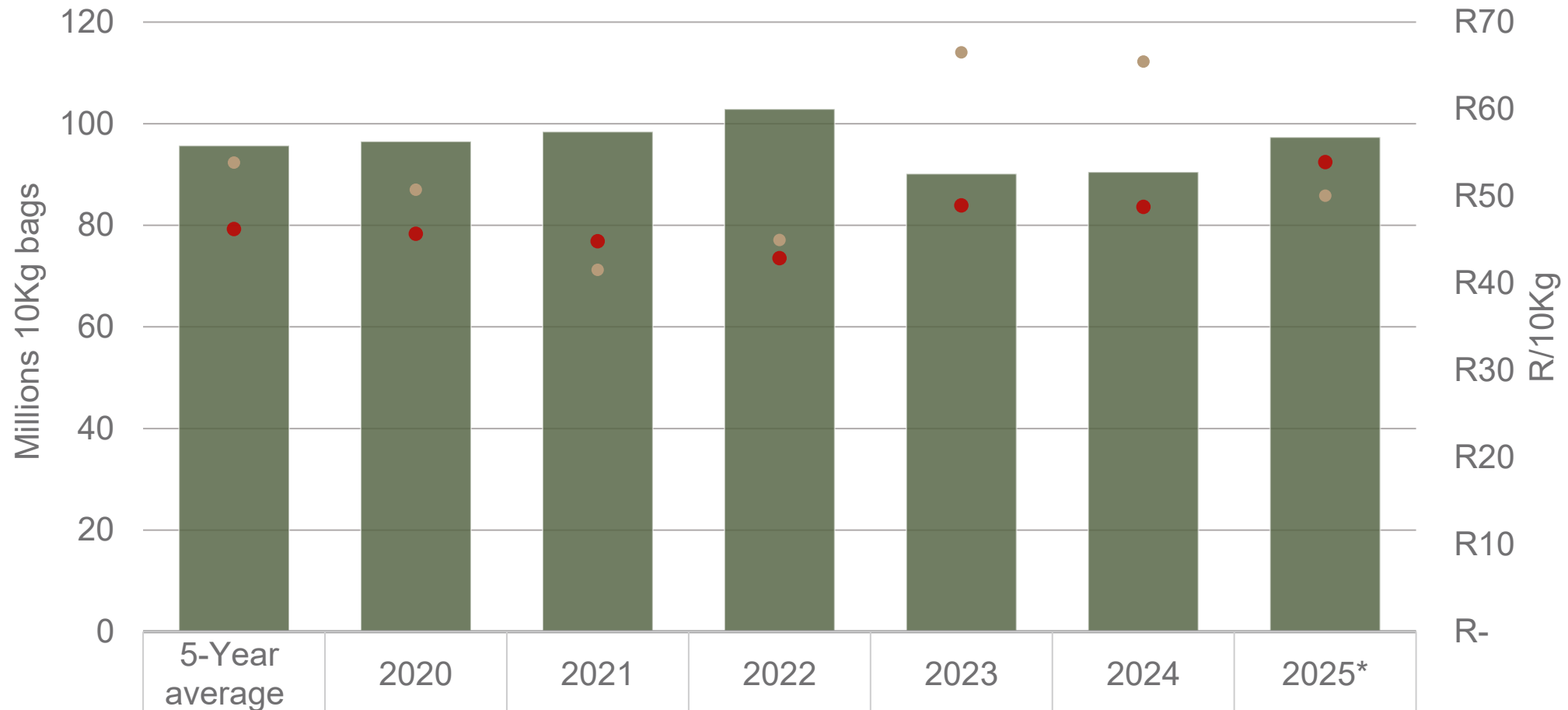
Data disclaimer: Potatoes SA does not take responsibility for the accuracy or interpretation of company data re-purposed by 3rd parties

Market share of regions on fresh produce markets 2019-2024



Data disclaimer: Potatoes SA does not take responsibility for the accuracy or interpretation of company data re-purposed by 3rd parties

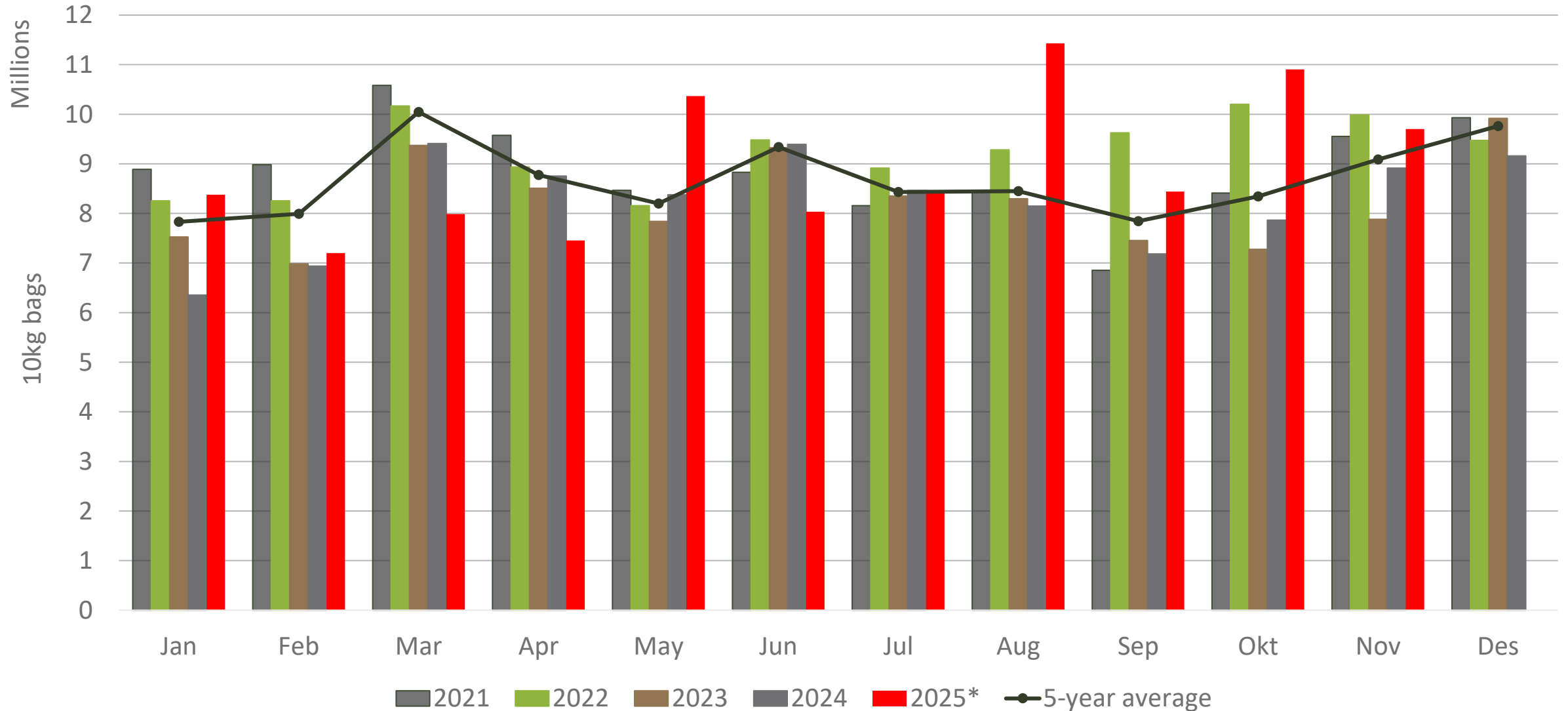
Cumulative total number of 10 kg bags sold on markets



Sold 1,670,642 bags **more** than the **5-year average** (2020 to 2024) of the first 48 weeks of 2025

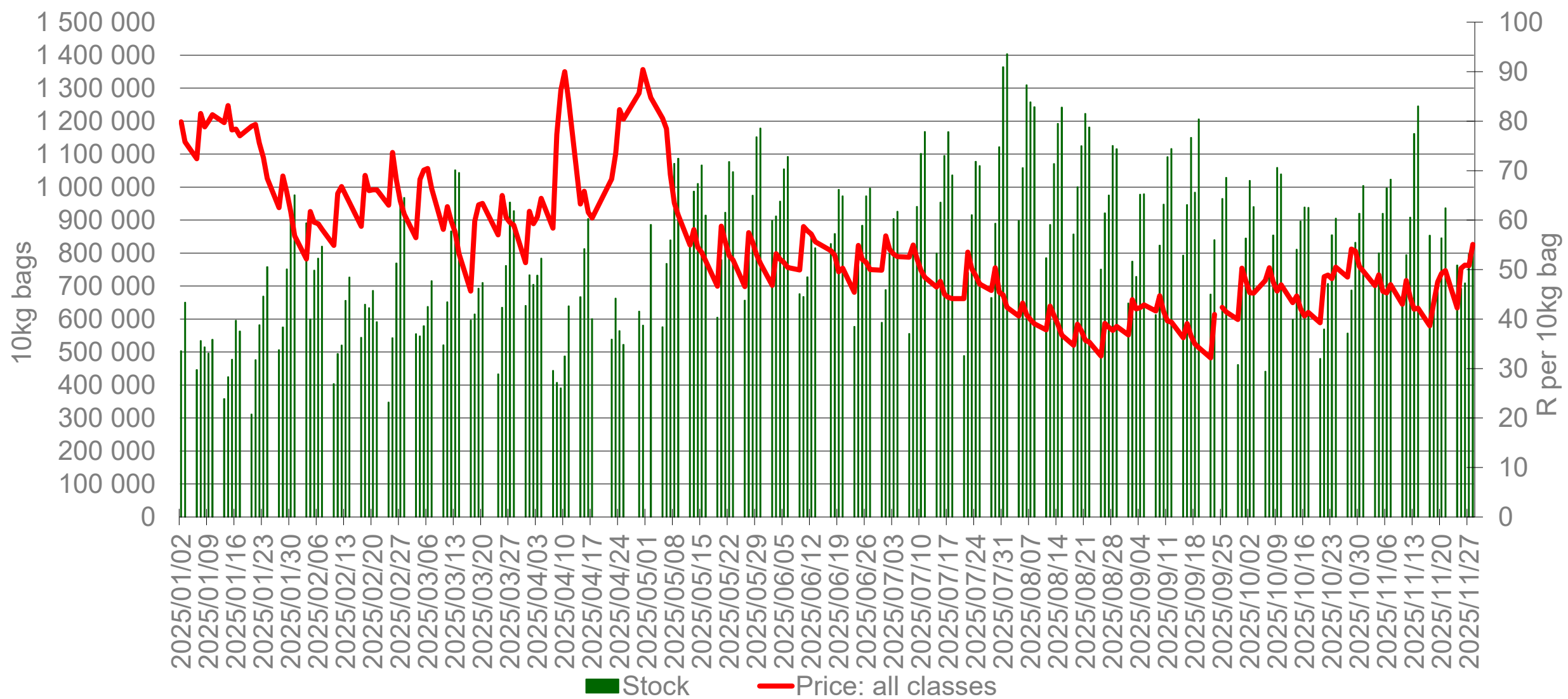
Data disclaimer: Potatoes SA does not take responsibility for the accuracy or interpretation of company data re-purposed by 3rd parties

Monthly sales volumes on markets: Potatoes



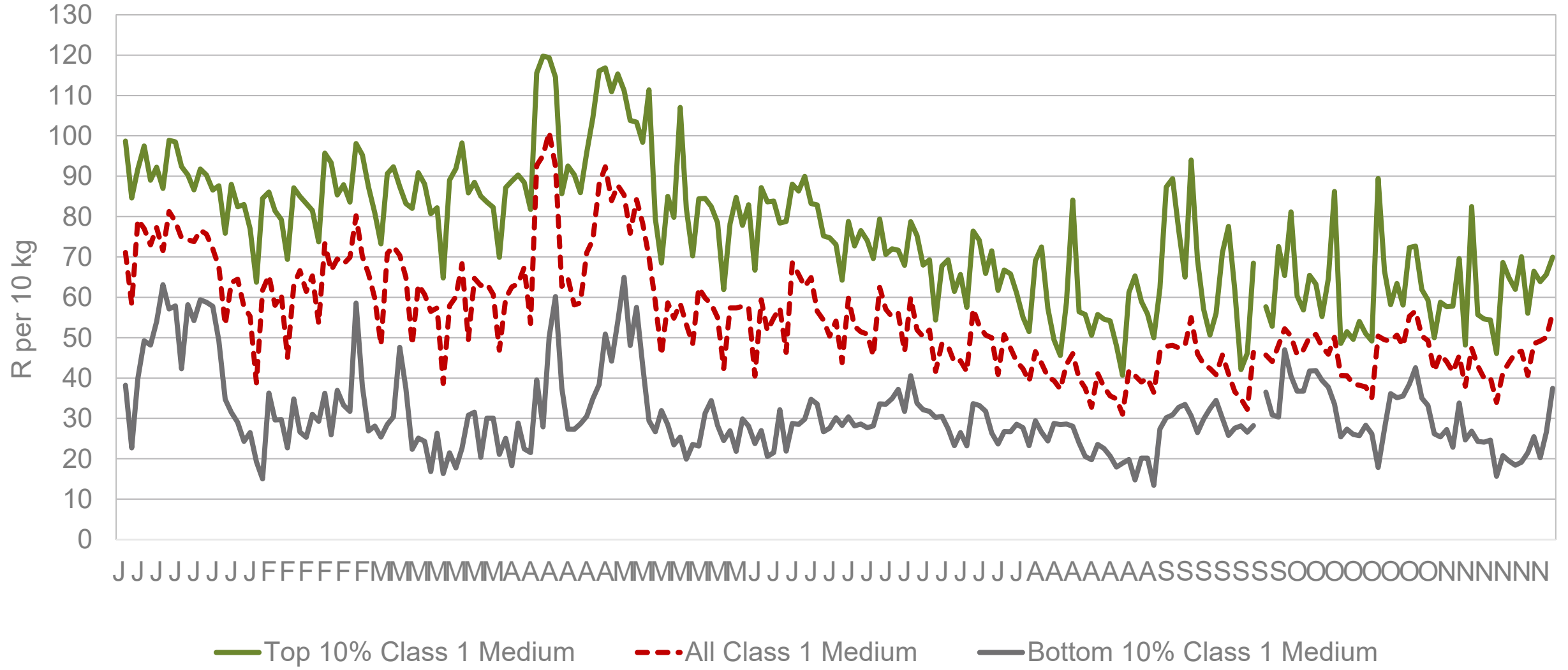
Data disclaimer: Potatoes SA does not take responsibility for the accuracy or interpretation of company data re-purposed by 3rd parties

RSA daily price versus daily available stocks (all classes & all sizes)



Data disclaimer: Potatoes SA does not take responsibility for the accuracy or interpretation of company data re-purposed by 3rd parties

JHB market daily : Top 10% versus bottom 10% prices – Class 1 Medium (since January 2025)



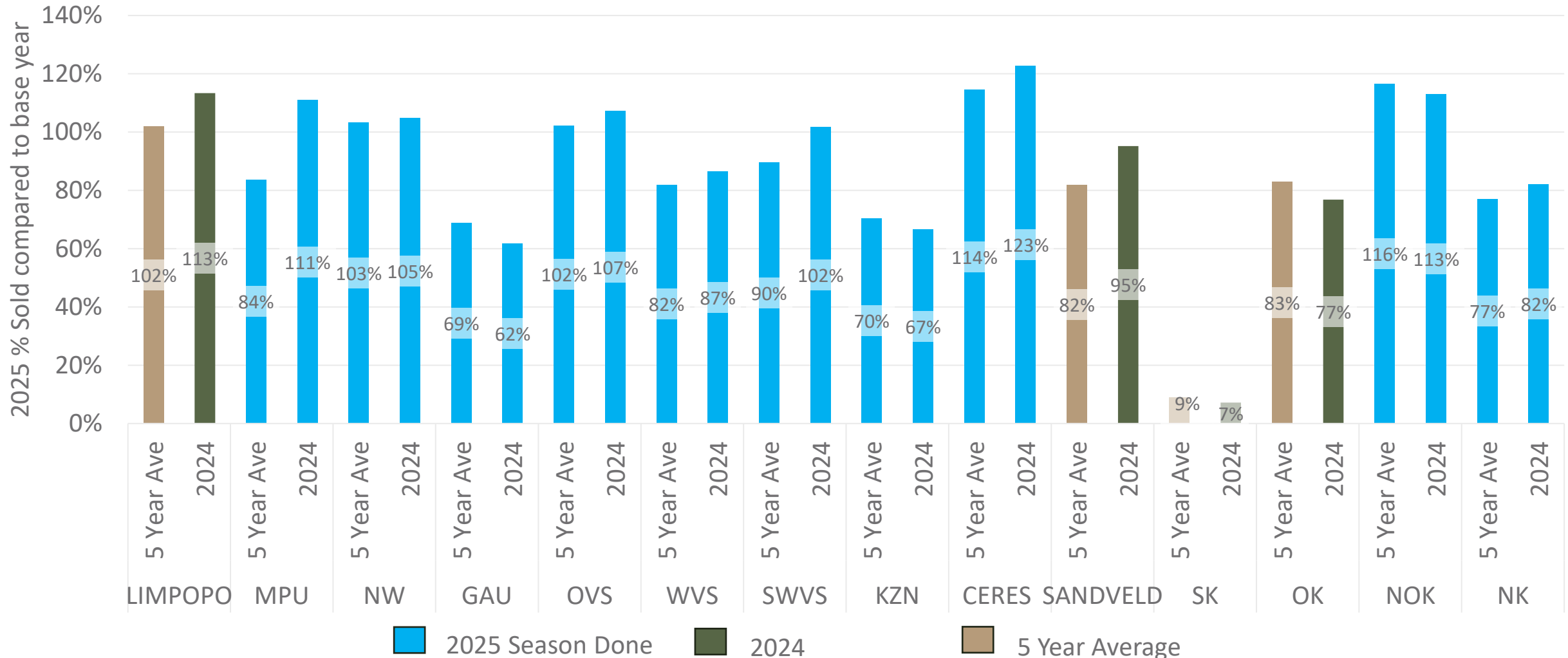
Data disclaimer: Potatoes SA does not take responsibility for the accuracy or interpretation of company data re-purposed by 3rd parties

FPM Sales pace comparison per region

2025 compared to 5-year average and 2024

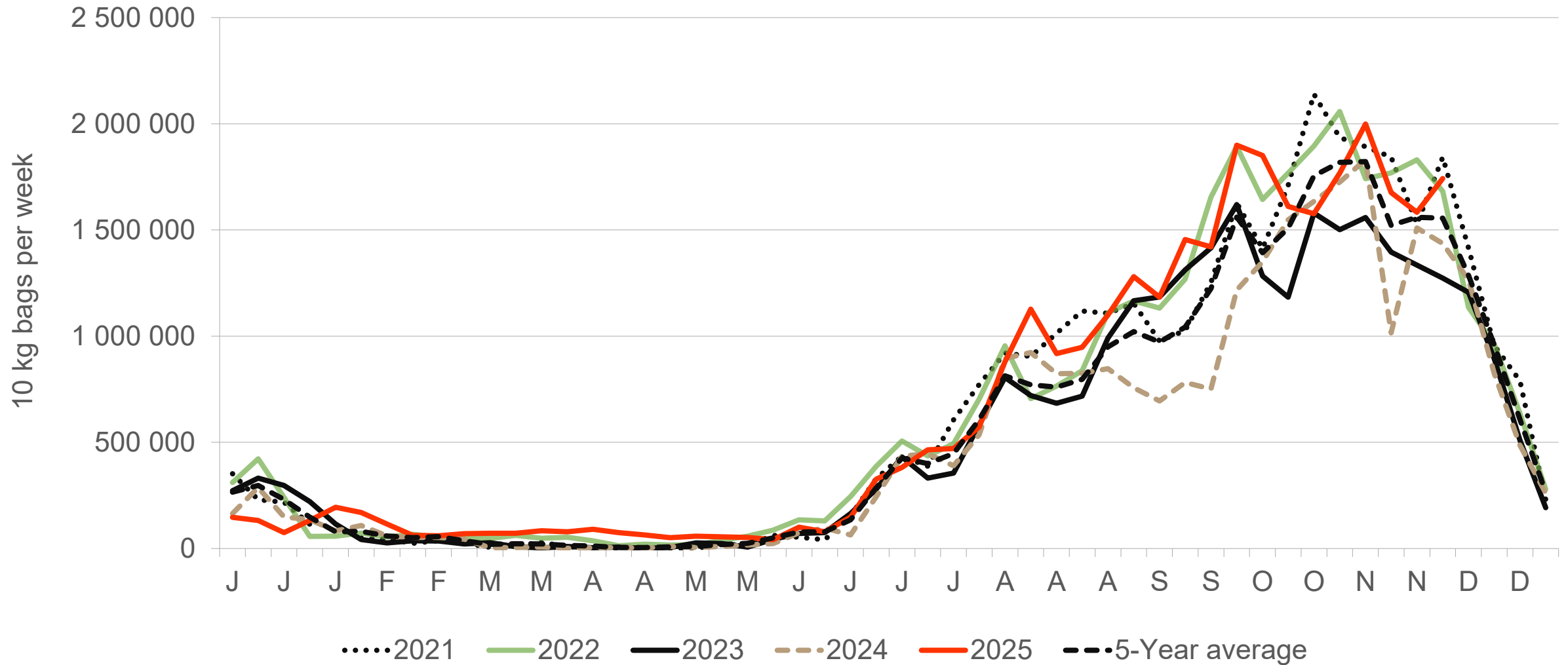


The *FPM Sales pace* compares the current year's cumulative volumes sold on the FPM with the previous year and the five-year average. Differences in these trends reflect variations in hectares planted, regional weather conditions, yield performance, and market timing. Blue indicates regions that are done delivering for this season. Seasons are based on calendar year.
Note: This comparison is based on total volumes sold, not on hectares planted



Data disclaimer: Potatoes SA does not take responsibility for the accuracy or interpretation of company data re-purposed by 3rd parties

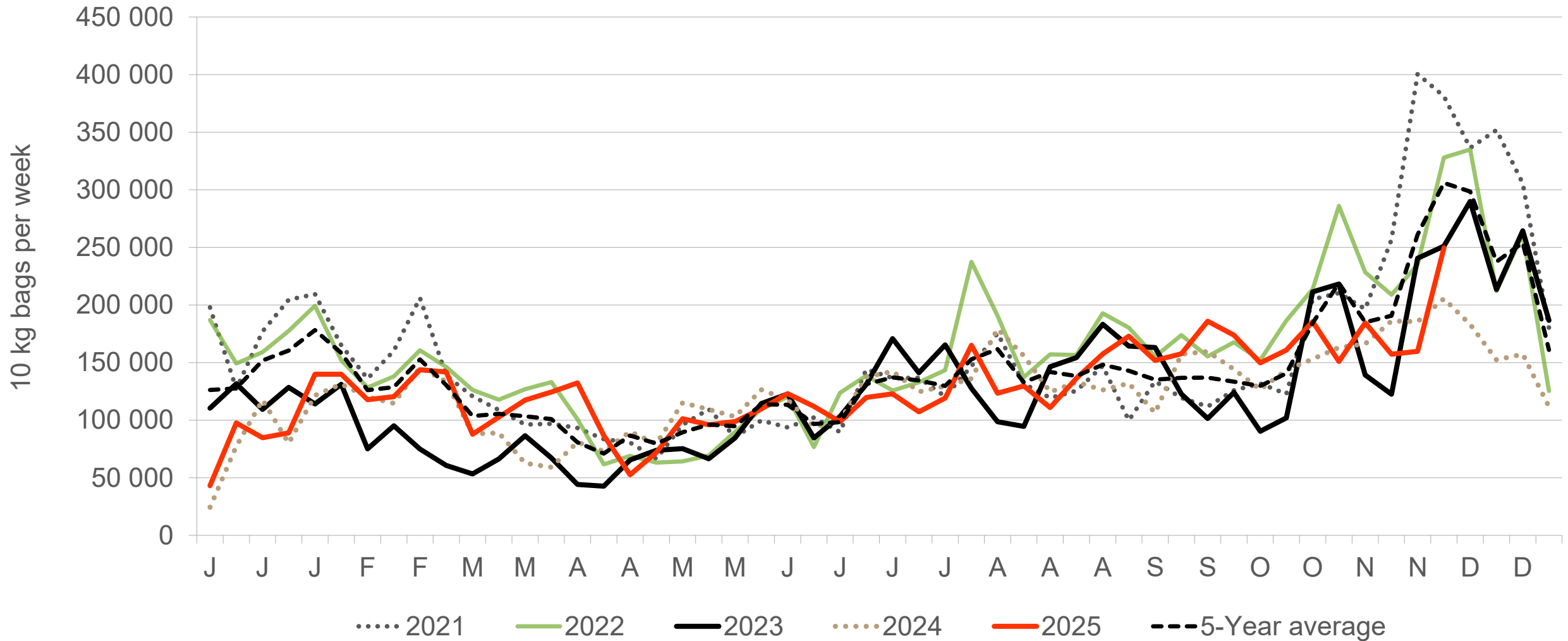
Limpopo: Amount of 10 kg bags per week sold on FPMs (all classes)



Sold 27% bags **more** than the first 48 weeks of 2024 and 3,697,197 bags **less** than the 5-year average (2020 to 2024) of the first 48 weeks of each year

Data disclaimer: Potatoes SA does not take responsibility for the accuracy or interpretation of company data re-purposed by 3rd parties

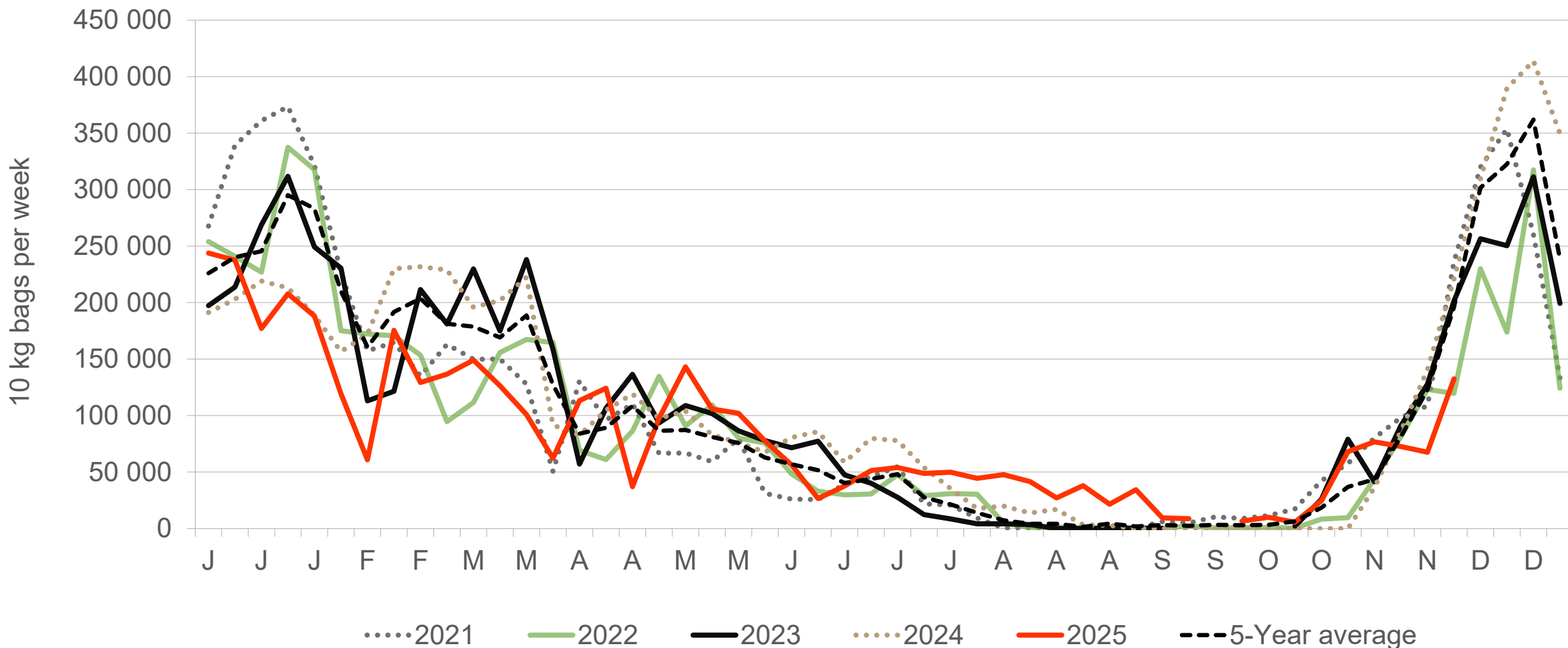
Sandveld: Amount of 10 kg bags per week sold on FPMs (all classes)



Sold 5% bags **more** than the first 48 weeks of 2024 and 418,928 bags **less** than the 5-year average (2020 to 2024) of the first 48 weeks of each year.

Data disclaimer: Potatoes SA does not take responsibility for the accuracy or interpretation of company data re-purposed by 3rd parties

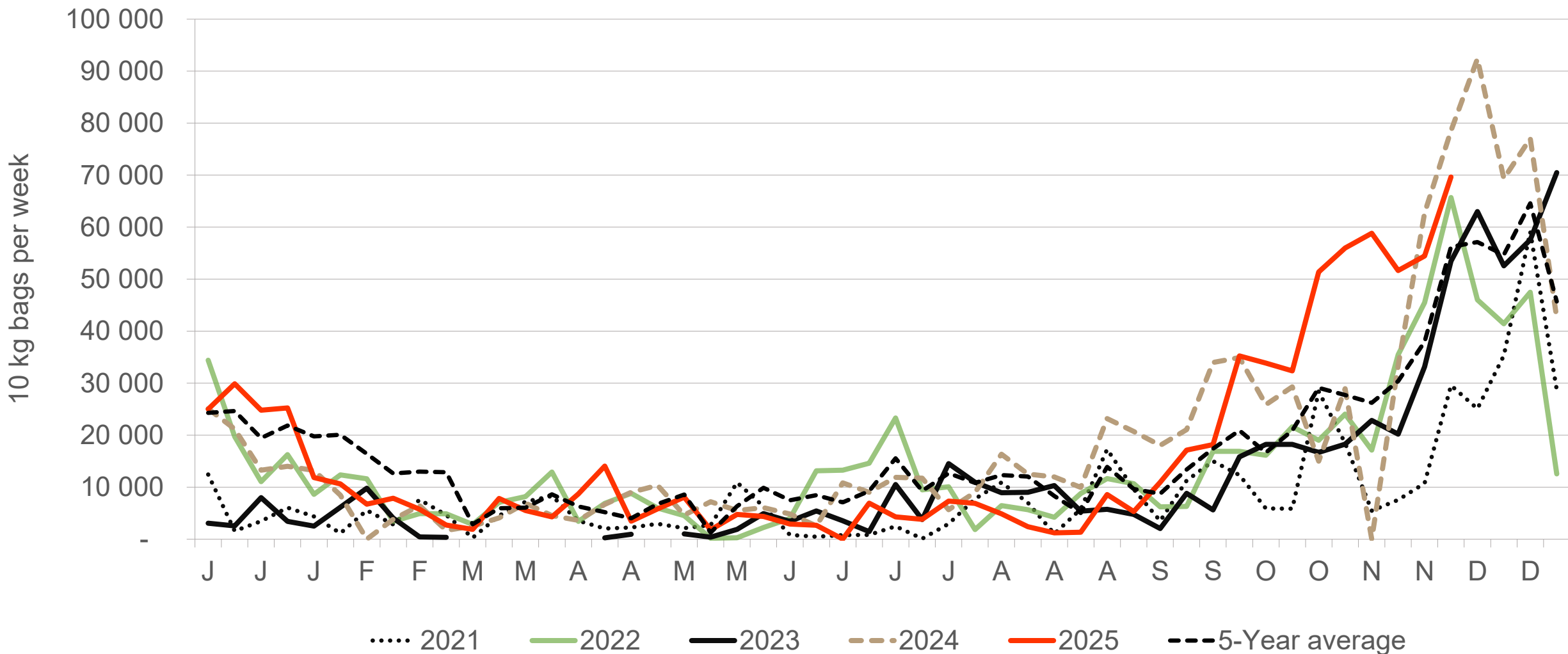
KwaZulu-Natal: Amount of 10 kg bags per week sold on FPMs (all classes)



Sold 11.82% bags **less** than the first 48 weeks of 2024 and 447,028 bags **less** than the 5-year average (2020 to 2024) of the first 48 weeks of each year.

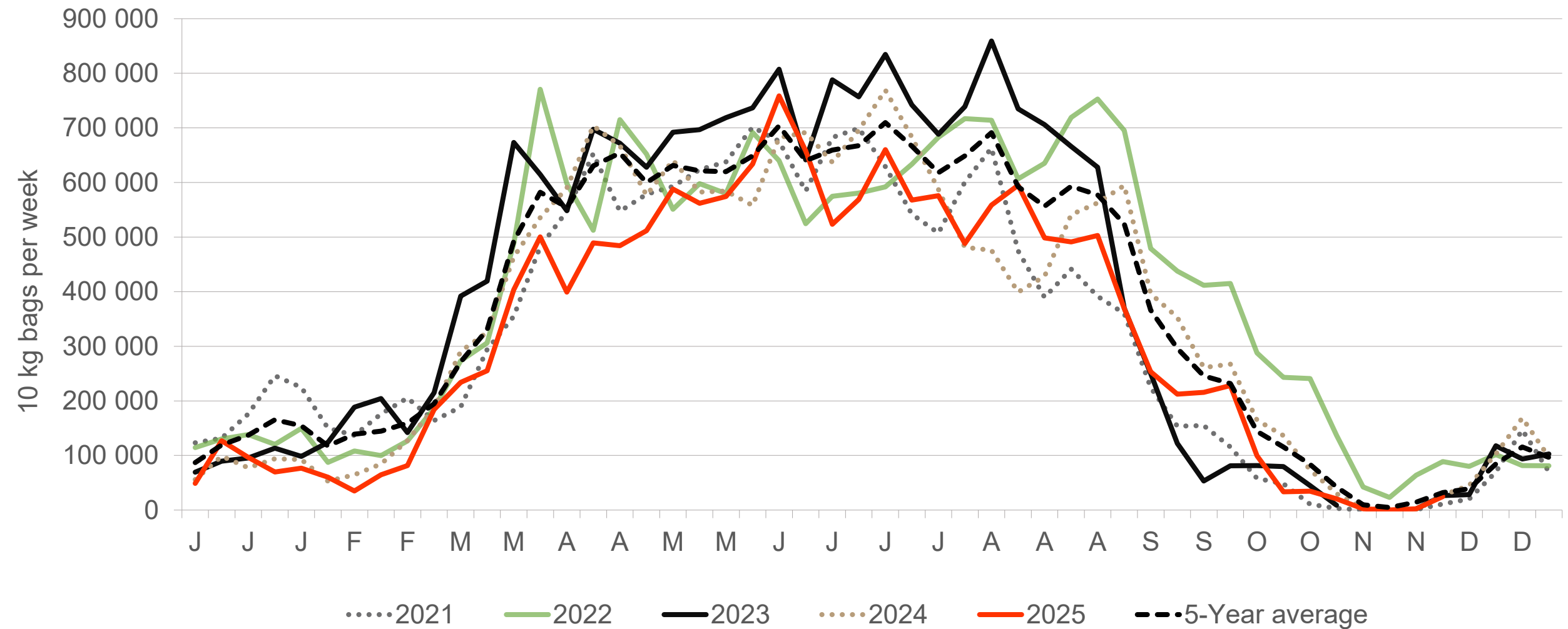
Data disclaimer: Potatoes SA does not take responsibility for the accuracy or interpretation of company data re-purposed by 3rd parties

Eastern Cape: Amount of 10 kg bags per week sold on FPMs (all classes)



Sold 7% bags **more** than the first 48 weeks of 2024 and 154,361 bags **more** than the 5-year average (2020 to 2024) of the 48 weeks of each year.

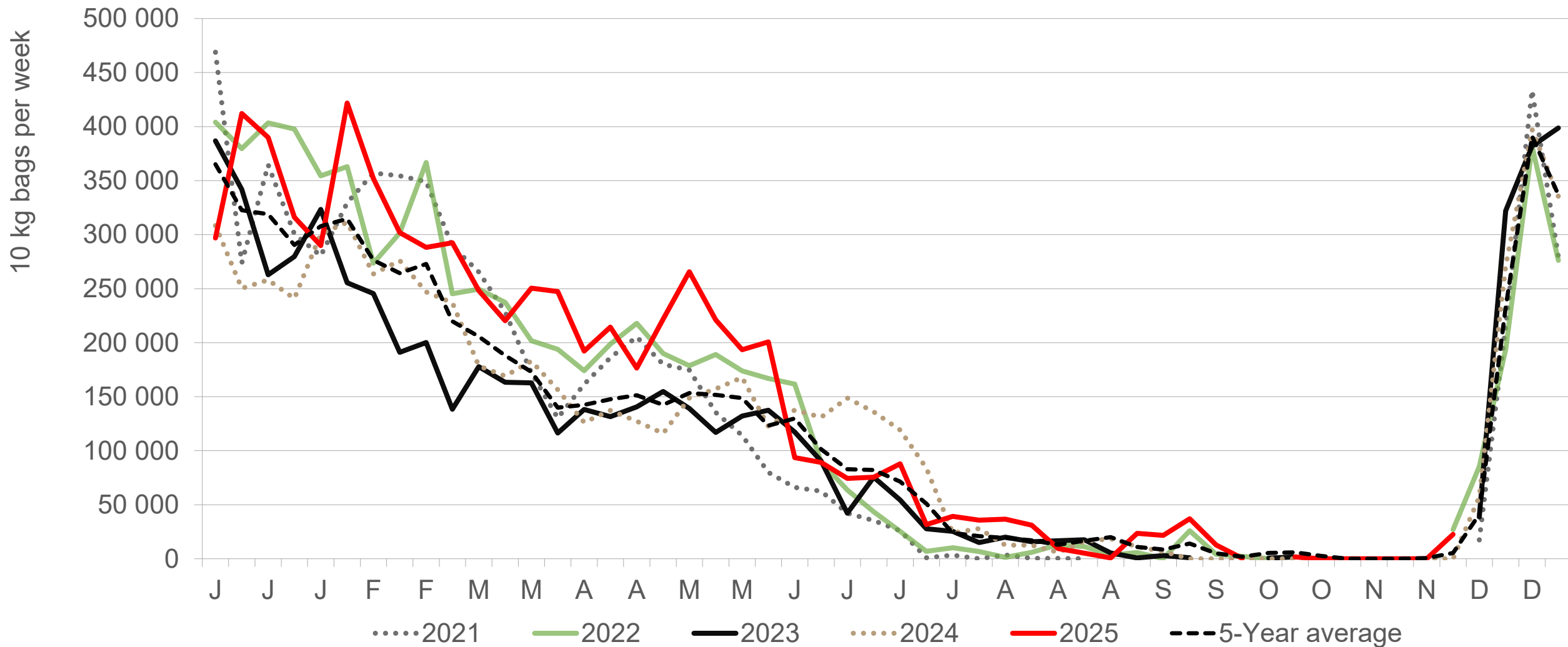
Western Free State : Amount of 10 kg bags per week sold on FPMs (all classes)



Sold 11% bags **less** than the first 48 weeks of 2024 and 3,067,123 bags **less** than the 5-year average (2020 to 2024) of the first 48 weeks of each year.

Data disclaimer: Potatoes SA does not take responsibility for the accuracy or interpretation of company data re-purposed by 3rd parties

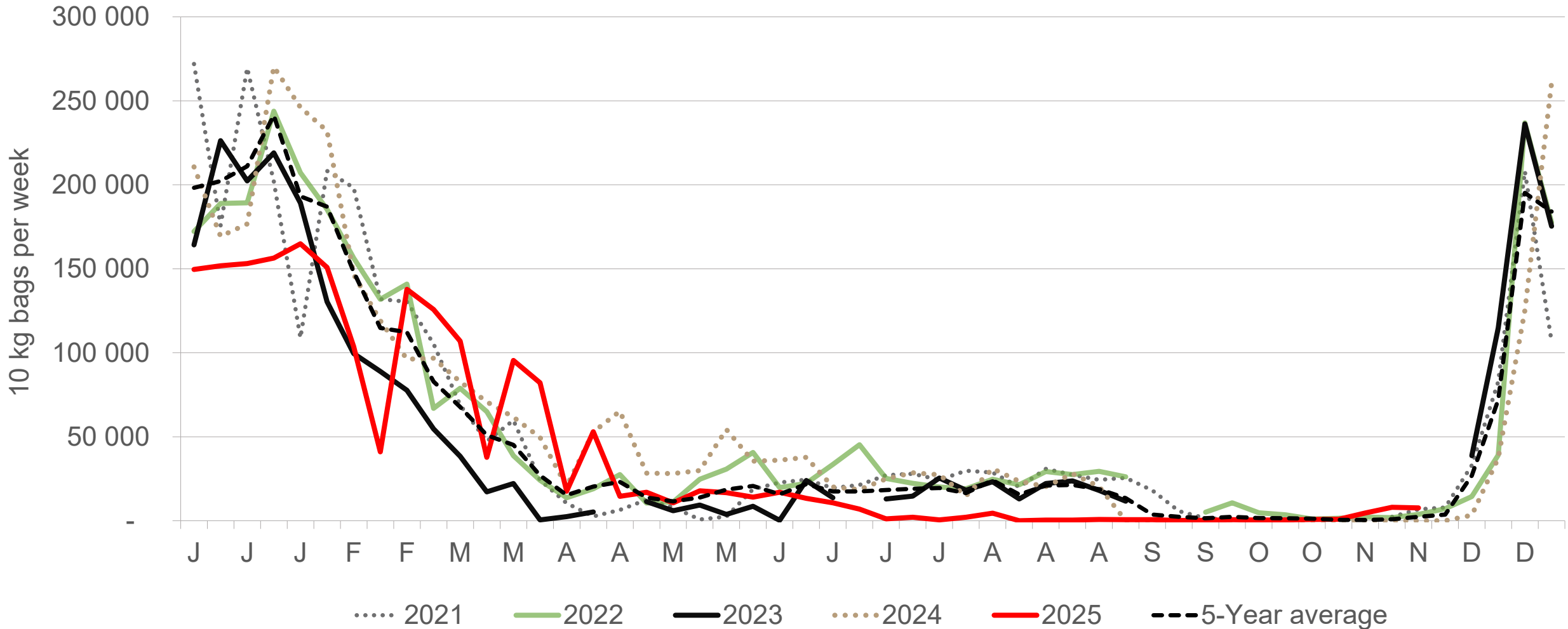
North-West: Amount of 10 kg bags per week sold on FPMs (all classes)



Sold 25% bags **more** than the first 48 weeks of 2024 and 1,213,277 **more** than the 5-year average (2020 to 2024) of the first 48 weeks of each year.

Data disclaimer: Potatoes SA does not take responsibility for the accuracy or interpretation of company data re-purposed by 3rd parties

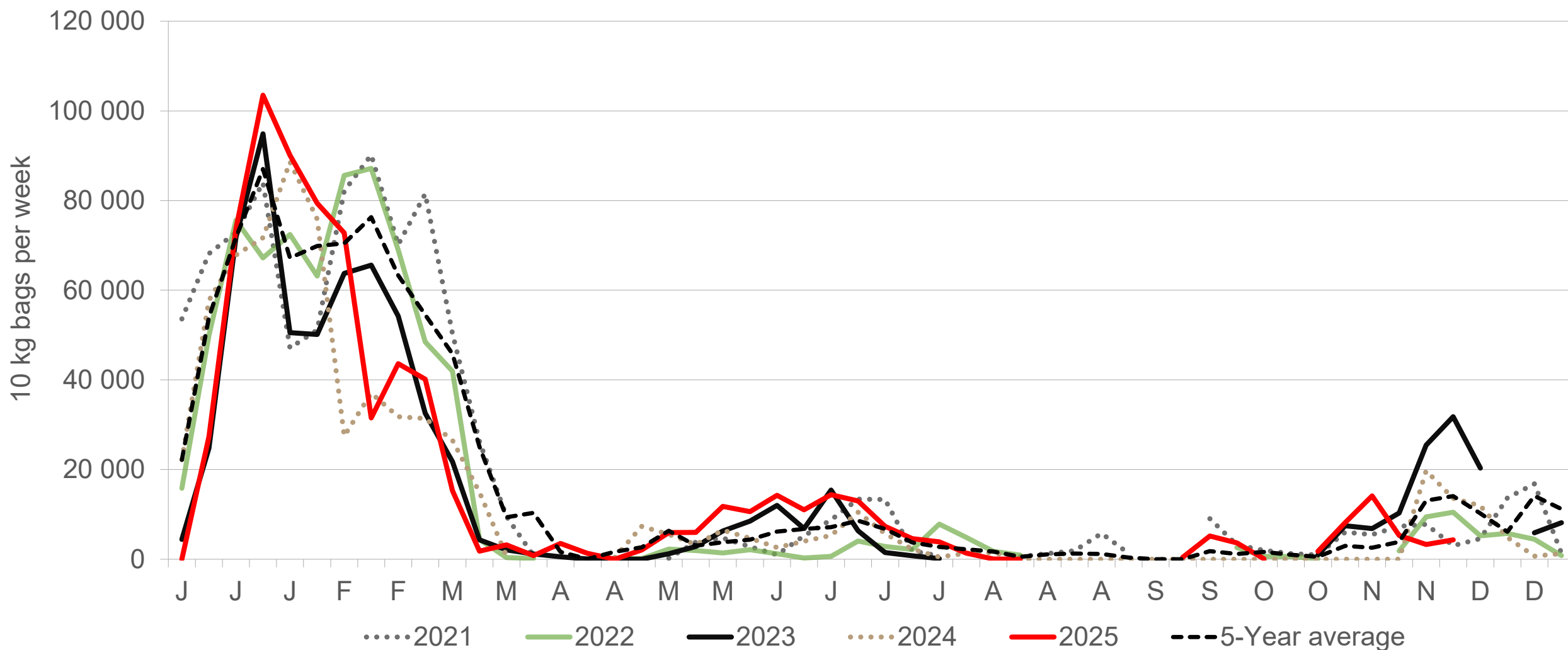
Gauteng: Amount of 10 kg bags per week sold on FPMs (all classes)



Sold 28% bags **less** than the first 48 weeks of 2024 and 386,558 bags **less** than the 5-year average (2020 to 2024) of the first 48 weeks of each year.

Data disclaimer: Potatoes SA does not take responsibility for the accuracy or interpretation of company data re-purposed by 3rd parties

Mpumalanga: Amount of 10 kg bags per week sold on FPMs (all classes)



Sold 14% bags **more** than the first 48 weeks of 2024 and 103,029 bags **less** than the 5-year average (2020 to 2024) of the 48 weeks of each year.

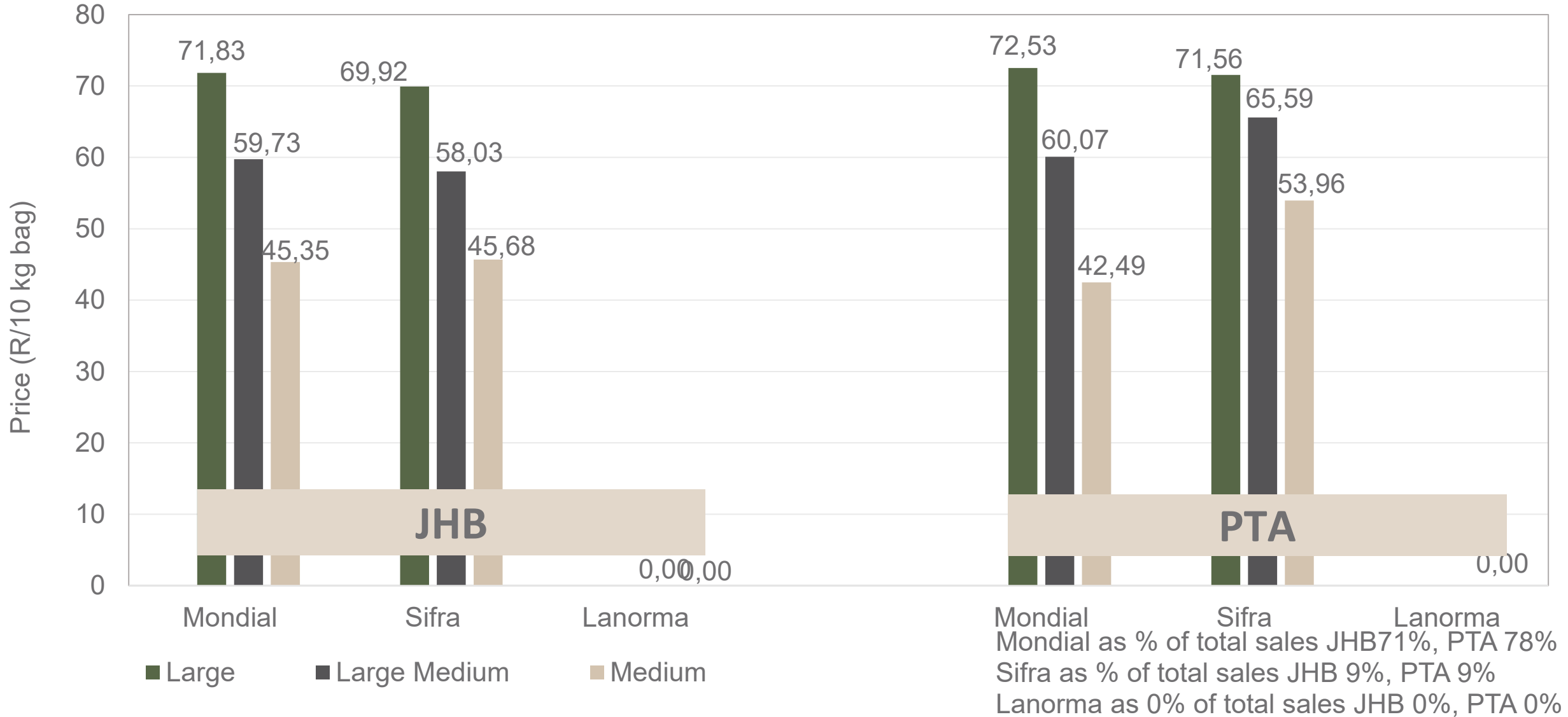
Average weekly prices and volumes for 10 kg bags of potatoes sold on selected markets from selected production regions



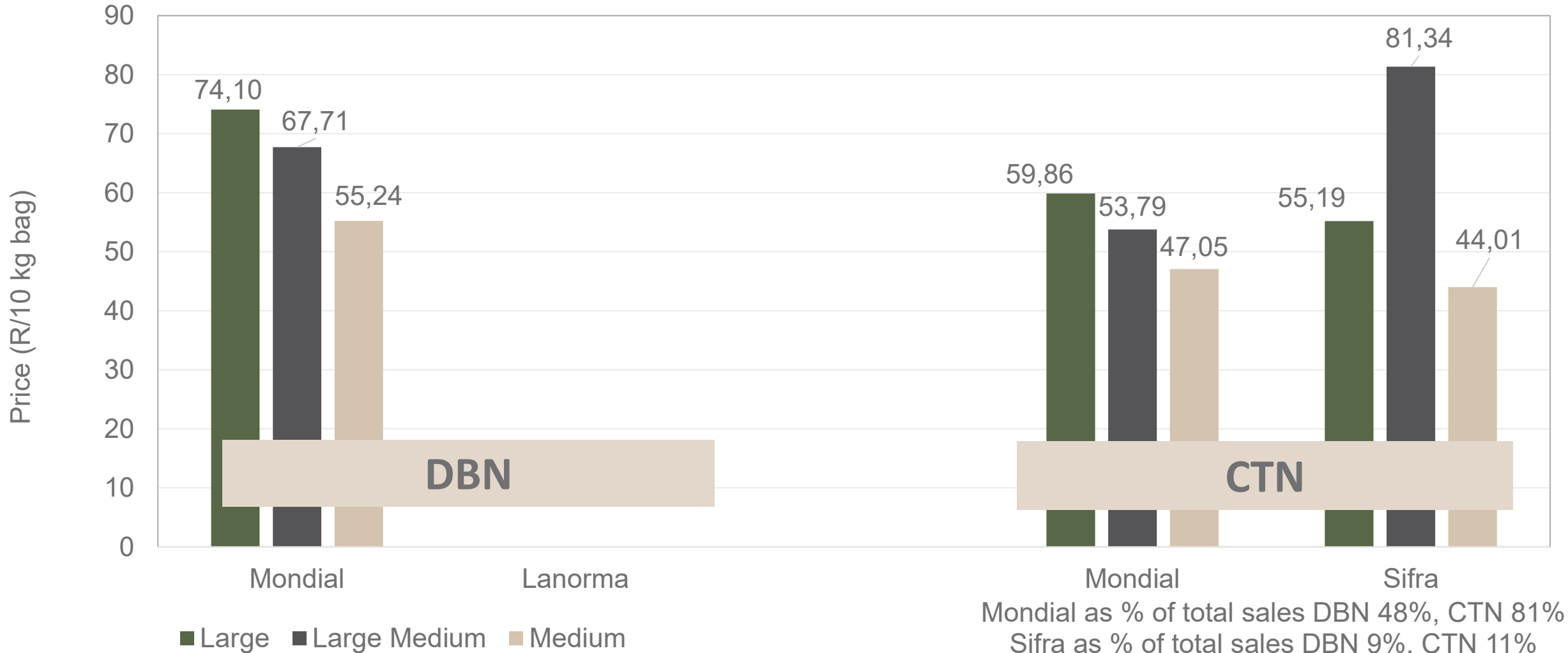
Klas & Grootte	Limpopo				Limpopo				Limpopo				Sandveld		KwaZulu-Natal				Eastern Cape				All Regions	
	JOH		PRE		DUR		SPR		BLO		KLE		CAP		DUR		PIE		POR		EAS		All Markets	
	Volume 10kg	Prices R/10kg	Volume 10kg	Prices R/10kg	Volume 10kg	Prices R/10kg	Volume 10kg	Prices R/10kg	Volume 10kg	Prices R/10kg	Volume 10kg	Prices R/10kg	Volume 10kg	Prices R/10kg	Volume 10kg	Prices R/10kg	Volume 10kg	Prices R/10kg	Volume 10kg	Prices R/10kg	Volume 10kg	Prices R/10kg	Volume 10kg	Prices R/10kg
1L	172 306	72.21	79 989	72.33	7 681	75.37	20 997	70.48	4 721	77.88	8 313	78.94	23 094	59.12	15 962	71.57	5 269	73.07	4 479	58.86	3 543	69.32	392 277	71.51
1L/M	212 655	60.83	109 121	58.52	21 309	68.94	31 844	57.13	12 301	62.82	18 124	58.87	33 357	53.44	21 693	66.27	4 606	66.91	5 958	49.86	7 382	62.38	544 232	60.27
1M	224 486	49.80	104 338	44.18	28 496	55.32	33 745	43.24	9 261	51.54	16 829	46.16	40 251	46.10	21 935	59.31	5 711	57.20	8 897	45.17	5 216	60.87	555 540	48.80
1S	89 547	21.51	29 033	17.81	17 172	31.01	9 047	25.56	2 737	28.69	5 859	24.47	20 317	31.63	5 786	35.44	2 841	30.15	3 770	31.40	3 501	48.75	219 794	25.08
1S/M	66 988	33.85	30 768	26.10	3 108	51.20	6 718	34.96	2 358	48.62	3 503	33.19	1 098	42.89	3 791	47.88	1 466	43.74	-	-	-	-	137 078	33.14
1XL	170	78.21	-	-	-	-	-	-	-	-	-	-	-	-	-	-	-	-	-	-	-	-	170	78.21
1XS	34 085	14.40	-	-	-	-	-	-	-	-	-	-	-	-	-	-	-	-	-	-	-	-	35 402	15.15
1XXS	351	26.72	-	-	-	-	-	-	-	-	-	-	-	-	-	-	-	-	-	-	-	-	1 135	39.18
2L	30 438	58.00	18 954	62.01	1 500	67.32	2 748	61.09	2 016	70.13	4 046	68.48	15 027	48.69	1 730	69.16	1 552	63.61	1 613	47.37	2 218	60.98	96 577	58.55
2L/M	30 620	46.21	16 341	49.14	2 727	60.22	4 861	48.82	1 124	57.78	3 139	48.65	15 864	44.19	1 790	54.18	1 107	53.90	1 073	44.54	2 994	54.29	95 361	48.83
2M	26 817	35.93	15 748	37.15	2 853	53.29	4 630	37.83	327	44.60	4 060	37.61	28 551	35.04	865	50.65	1 704	50.56	3 854	38.12	2 292	50.43	107 757	37.93
2S	4 563	19.60	3 446	14.90	912	24.06	550	19.60	110	34.00	1 467	20.63	15 635	26.39	730	32.30	892	19.57	1 184	23.71	1 021	34.72	35 492	23.92
2S/M	3 337	25.81	3 288	17.63	456	30.54	878	28.70	290	42.52	453	23.55	166	23.89	200	30.00	80	30.00	-	-	-	-	11 870	23.65
2XL	-	-	-	-	-	-	-	-	-	-	-	-	-	-	-	-	-	-	-	-	-	-	-	-
2XS	-	-	-	-	-	-	-	-	-	-	-	-	-	-	-	-	-	-	-	-	-	-	674	7.89
2XXS	-	-	-	-	-	-	-	-	-	-	-	-	-	-	-	-	-	-	-	-	-	-	140	9.04
3L	4 159	44.33	1 148	47.94	30	50.00	1 117	56.01	-	-	120	38.67	2 113	28.60	-	-	232	65.24	-	-	-	-	9 029	43.47
3L/M	5 293	32.98	4 990	41.08	330	50.00	213	47.77	374	54.37	-	-	16	44.00	96	200.00	461	36.17	-	-	606	45.00	12 913	39.12
3M	4 230	30.61	2 575	30.91	410	39.39	532	28.52	110	25.00	468	31.77	5 946	24.97	-	-	1 368	44.77	1 079	31.40	699	46.67	20 079	30.27
3S/M	-	-	-	-	220	50.00	-	-	-	-	480	30.83	-	-	-	-	-	-	-	-	141	28.90	2 018	24.82
3XS	-	-	-	-	-	-	-	-	-	-	-	-	-	-	-	-	-	-	-	-	-	-	-	-
3XXS	-	-	-	-	-	-	-	-	-	-	-	-	-	-	-	-	-	-	-	-	-	-	-	-
4L	-	-	-	-	-	-	96	29.53	-	-	-	-	-	-	-	-	-	-	-	-	-	-	96	29.53
4L/M	-	-	-	-	-	-	354	19.03	-	-	-	-	16	35.94	-	-	220	40.00	-	-	-	-	890	26.50
4M	-	-	740	29.50	-	-	1 734	22.53	-	-	-	-	-	-	-	-	722	36.14	-	-	-	-	3 196	27.22
4S	-	-	-	-	-	-	-	-	-	-	-	-	787	6.97	-	-	10	30.00	-	-	-	-	797	7.26
4S/M	-	-	24	15.00	-	-	-	-	-	-	-	-	-	-	-	-	-	-	-	-	-	-	134	10.90
Total	910 067	50.63	426 375	49.79	92 241	53.25	122 603	49.04	37 216	56.65	67 767	50.57	224 673	40.80	75 739	60.77	30 323	52.55	32 798	43.57	29 987	57.18	2 332 786	50.06

Data disclaimer: Potatoes SA does not take responsibility for the accuracy or interpretation of company data re-purposed by 3rd parties

PTA & JHB markets: Average Prices - Different Sizes (only 10 kg bags)



DBN & CTN markets: Average Prices - Different Sizes (only 10 kg bags)



Mondial as % of total sales DBN 48%, CTN 81%
 Sifra as % of total sales DBN 9%, CTN 11%
 Lanorma as % of total sales DBN 0%, CTN 0%

Thank you for your time

Feel free to contact us

Dikgetho@potatoes.co.za

Jodie@potatoes.co.za



+27 (0)12 349 1906



6 De Havilland Crescent

Persequor Techno Park

Persequor Park

Pretoria



www.potatoes.co.za



Potatoes
Aartappels SA