



Weekly Market Information

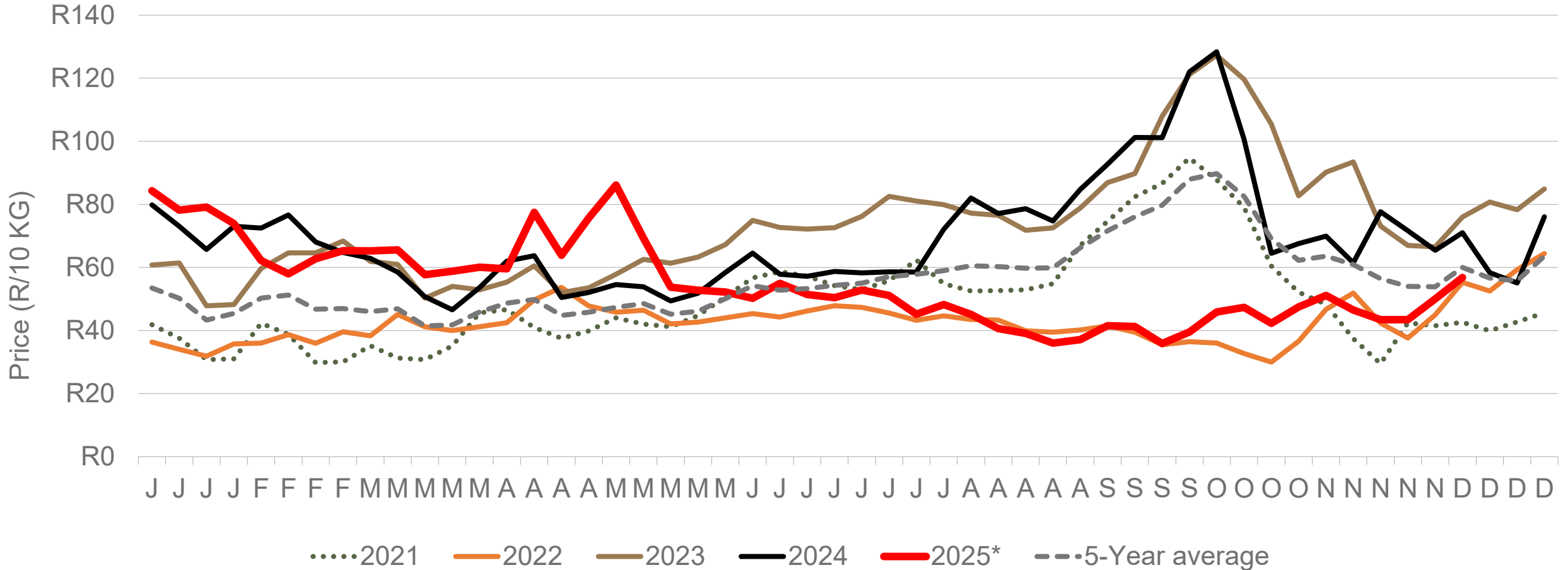
5 December 2025



**Potatoes
Aartappels SA**

www.potatoes.co.za

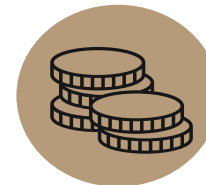
Average weekly price – all markets & all classes



Number of bags sold

3%

(Week on Week)



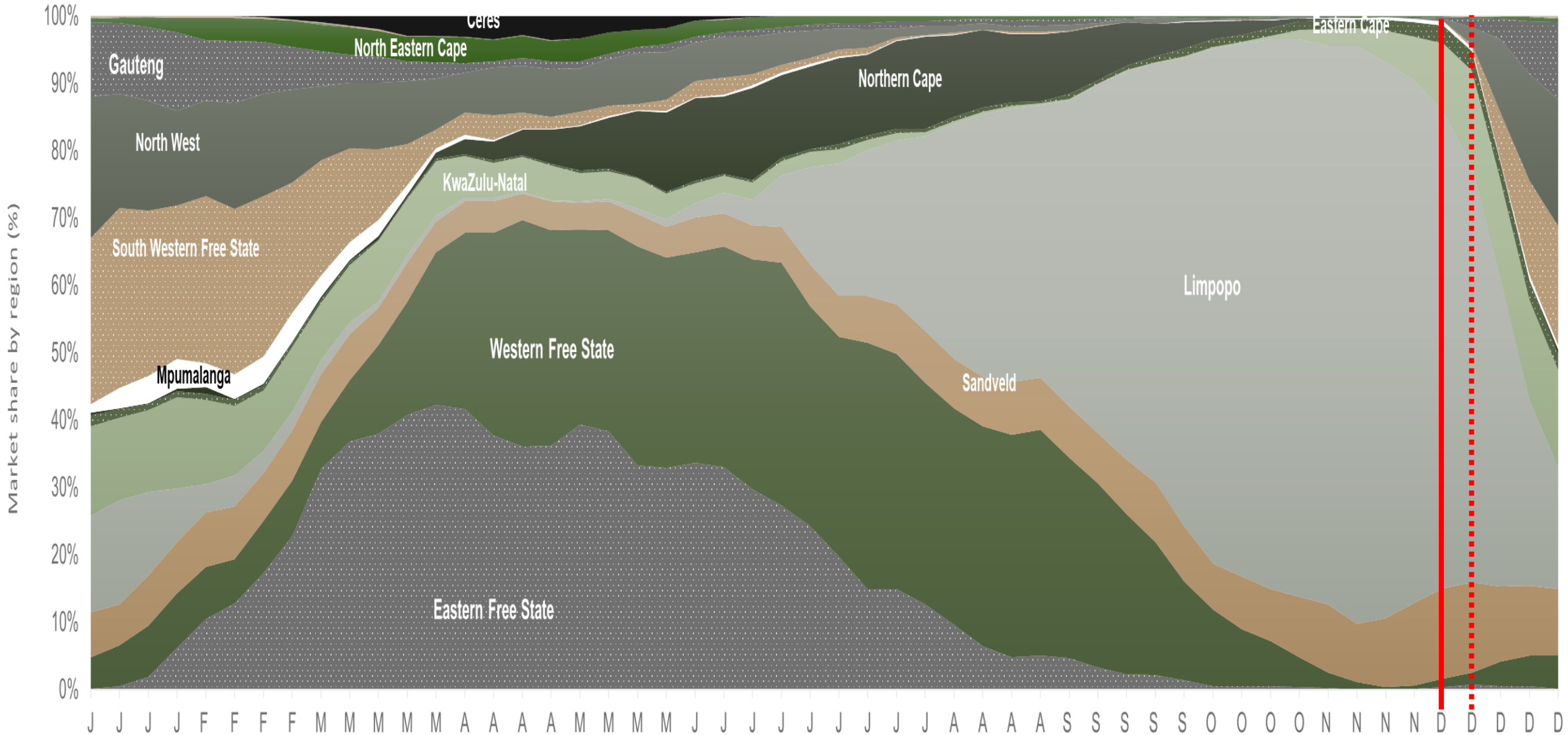
Average weekly price

13%

(Week on week)

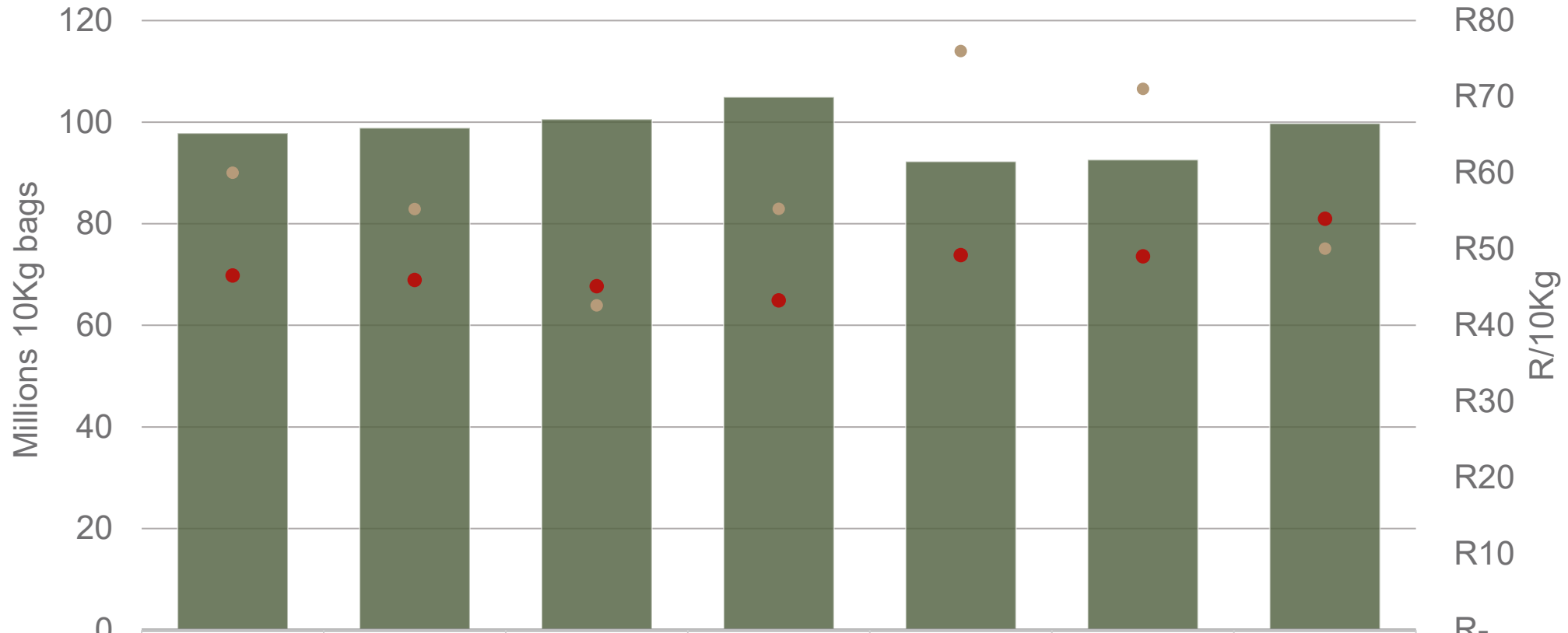


Market share of regions on fresh produce markets 2019-2024



Data disclaimer: Potatoes SA does not take responsibility for the accuracy or interpretation of company data re-purposed by 3rd parties

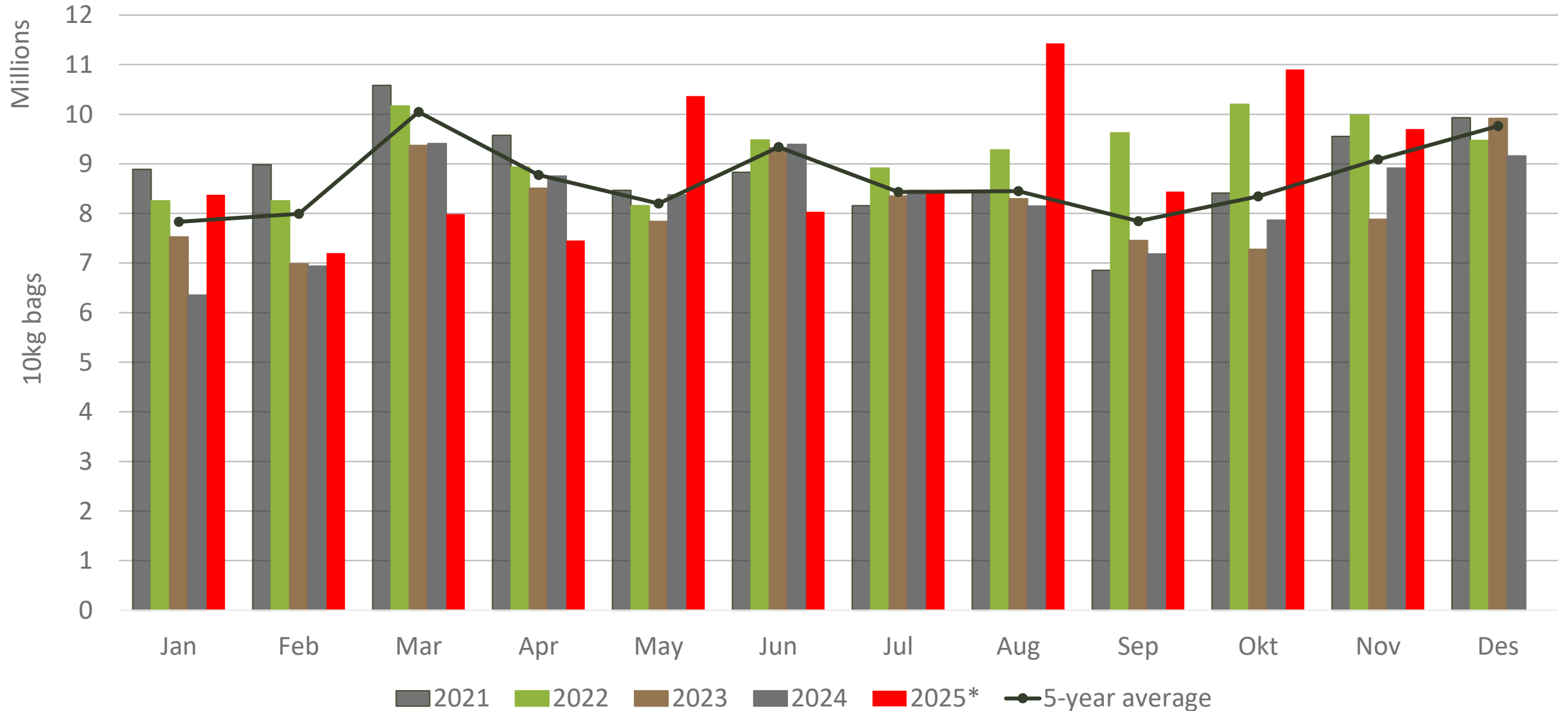
Cumulative total number of 10 kg bags sold on markets



Sold 1,920,709 bags **more** than the **5-year average** (2020 to 2024) of the first 49 weeks of 2025

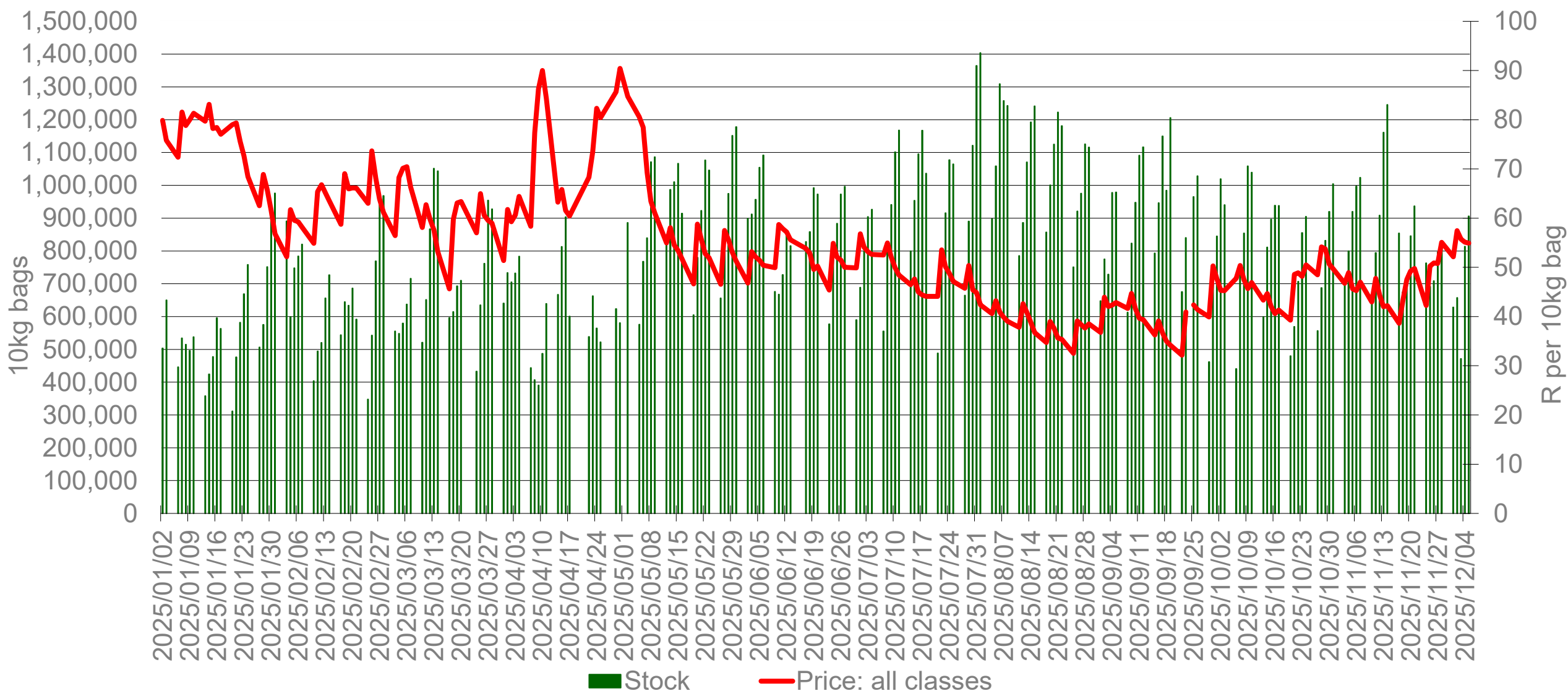
Data disclaimer: Potatoes SA does not take responsibility for the accuracy or interpretation of company data re-purposed by 3rd parties

Monthly sales volumes on markets: Potatoes



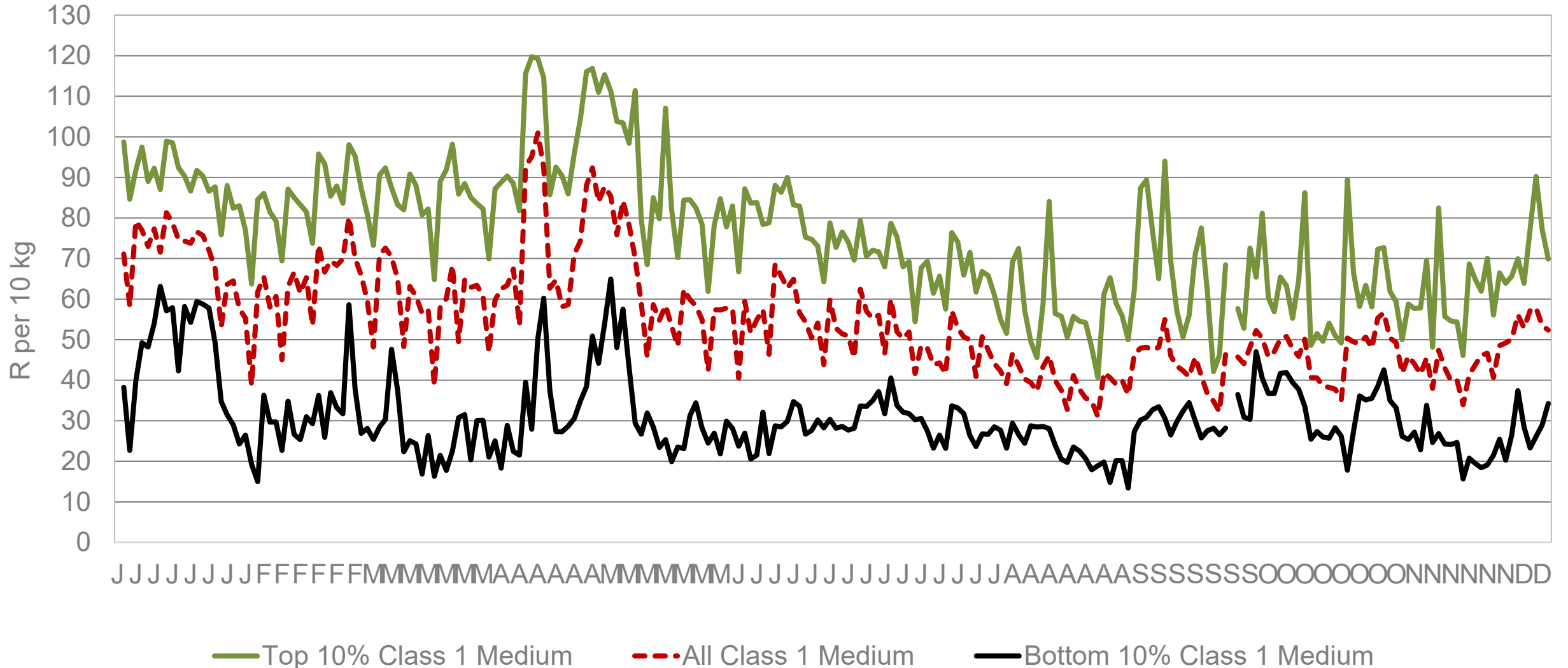
Data disclaimer: Potatoes SA does not take responsibility for the accuracy or interpretation of company data re-purposed by 3rd parties

RSA daily price versus daily available stocks (all classes & all sizes)



Data disclaimer: Potatoes SA does not take responsibility for the accuracy or interpretation of company data re-purposed by 3rd parties

JHB market daily : Top 10% versus bottom 10% prices – Class 1 Medium (since January 2025)



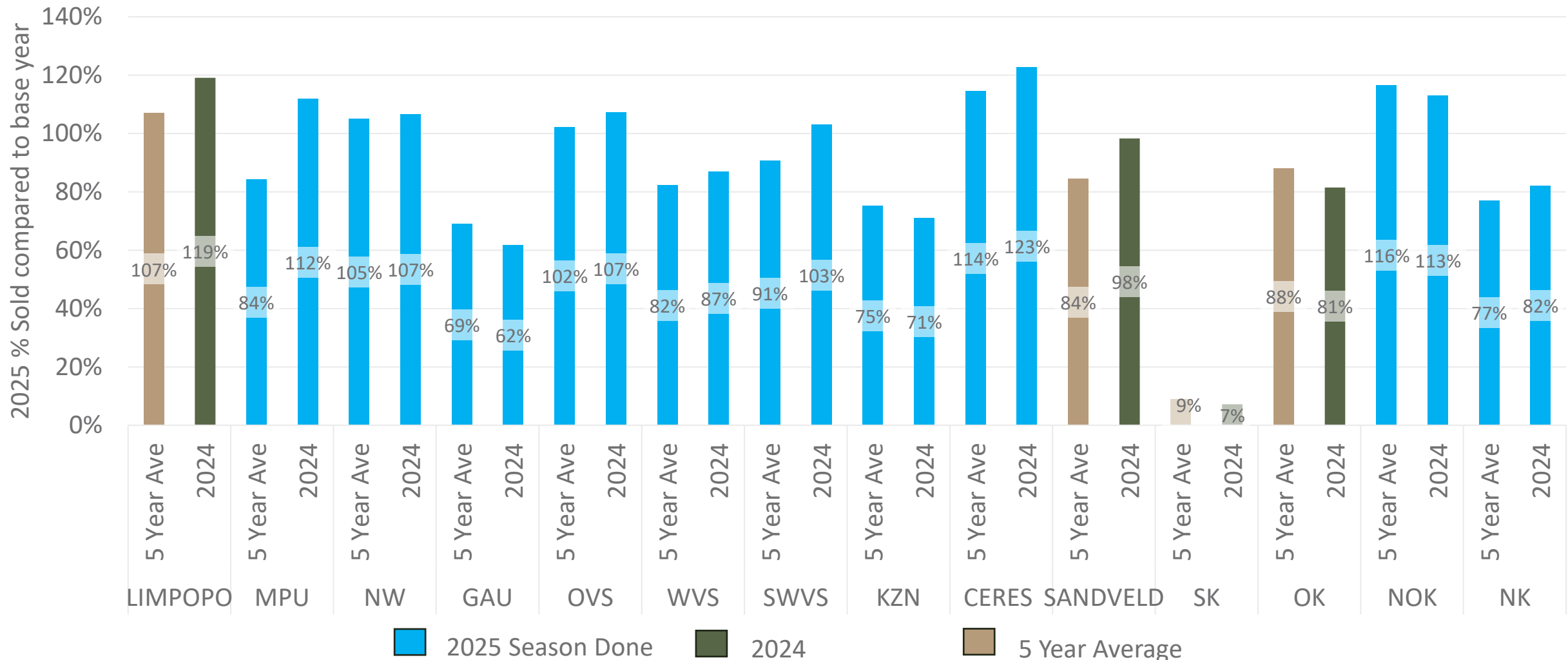
Data disclaimer: Potatoes SA does not take responsibility for the accuracy or interpretation of company data re-purposed by 3rd parties

FPM Sales pace comparison per region

2025 compared to 5-year average and 2024

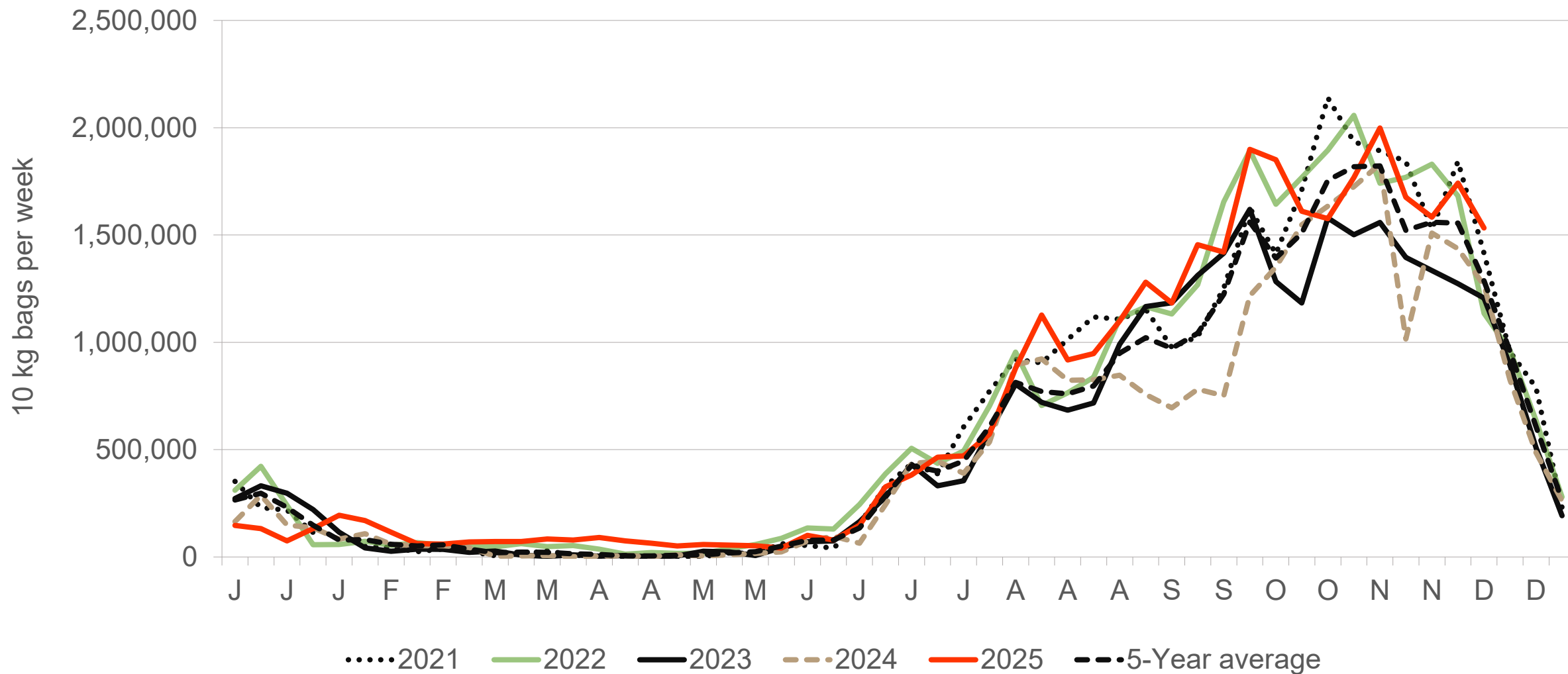


The *FPM Sales pace* compares the current year's cumulative volumes sold on the FPM with the previous year and the five-year average. Differences in these trends reflect variations in hectares planted, regional weather conditions, yield performance, and market timing. Blue indicates regions that are done delivering for this season. Seasons are based on calendar year.
Note: This comparison is based on total volumes sold, not on hectares planted



Data disclaimer: Potatoes SA does not take responsibility for the accuracy or interpretation of company data re-purposed by 3rd parties

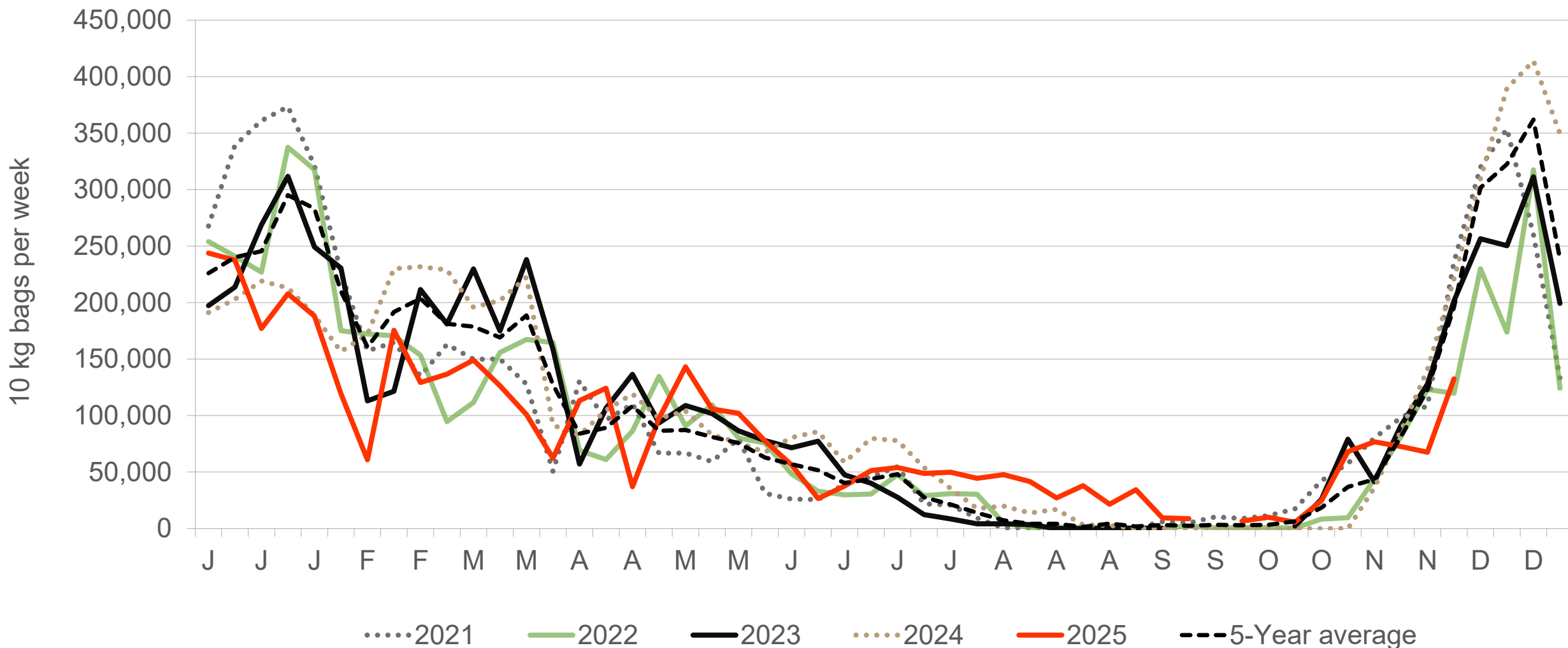
Limpopo: Amount of 10 kg bags per week sold on FPMs (all classes)



Sold 26% bags **more** than the first 49 weeks of 2024 and 3,943,598 bags **less** than the 5-year average (2020 to 2024) of the first 49 weeks of each year

Data disclaimer: Potatoes SA does not take responsibility for the accuracy or interpretation of company data re-purposed by 3rd parties

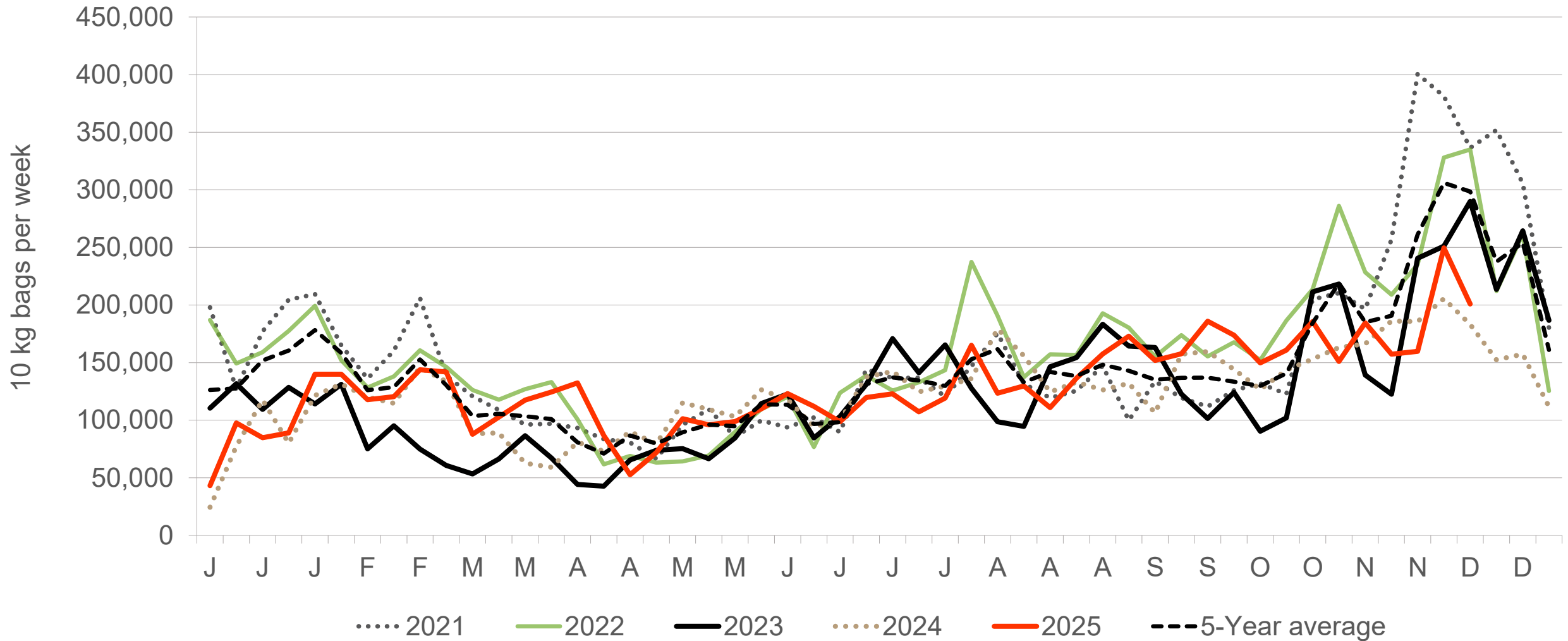
KwaZulu-Natal: Amount of 10 kg bags per week sold on FPMs (all classes)



Sold 11.88% bags **less** than the first 49 weeks of 2024 and 478,451 bags **less** than the 5-year average (2020 to 2024) of the first 49 weeks of each year.

Data disclaimer: Potatoes SA does not take responsibility for the accuracy or interpretation of company data re-purposed by 3rd parties

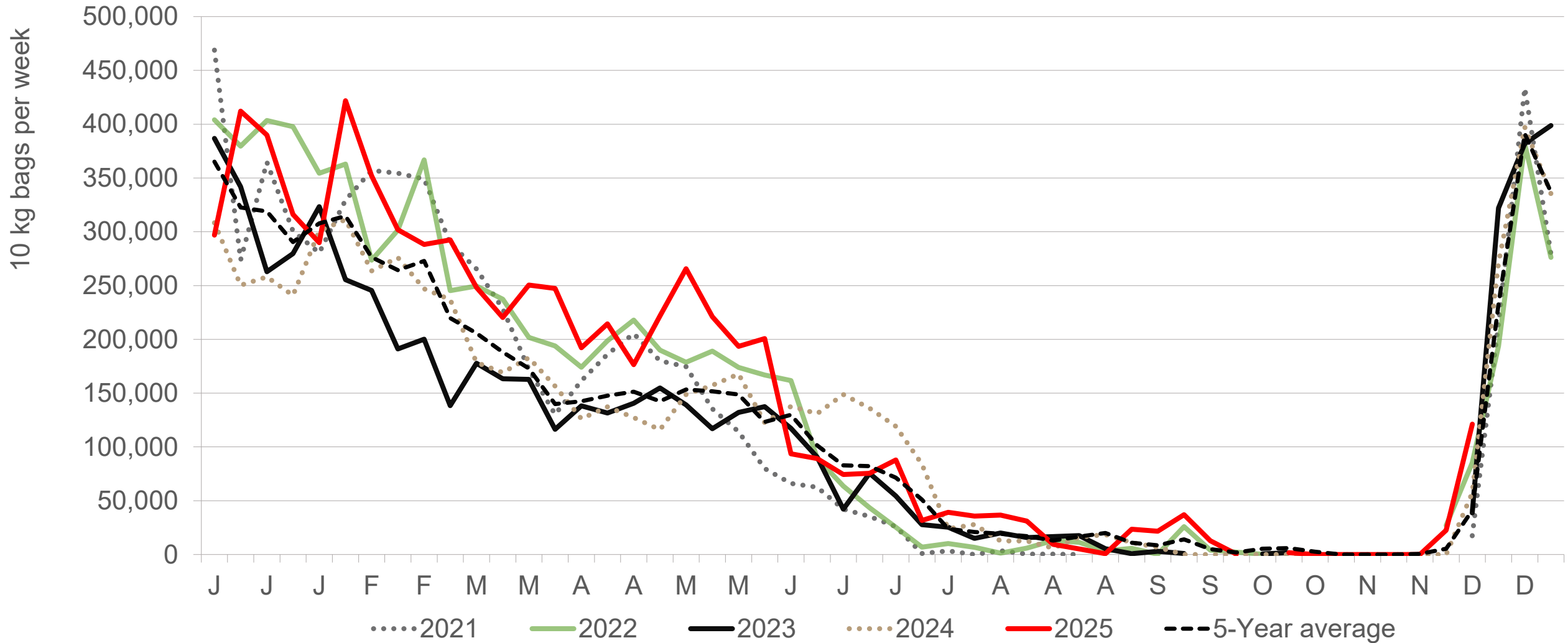
Sandveld: Amount of 10 kg bags per week sold on FPMs (all classes)



Sold 5% bags **more** than the first 49 weeks of 2024 and 516,551 bags **less** than the 5-year average (2020 to 2024) of the first 49 weeks of each year.

Data disclaimer: Potatoes SA does not take responsibility for the accuracy or interpretation of company data re-purposed by 3rd parties

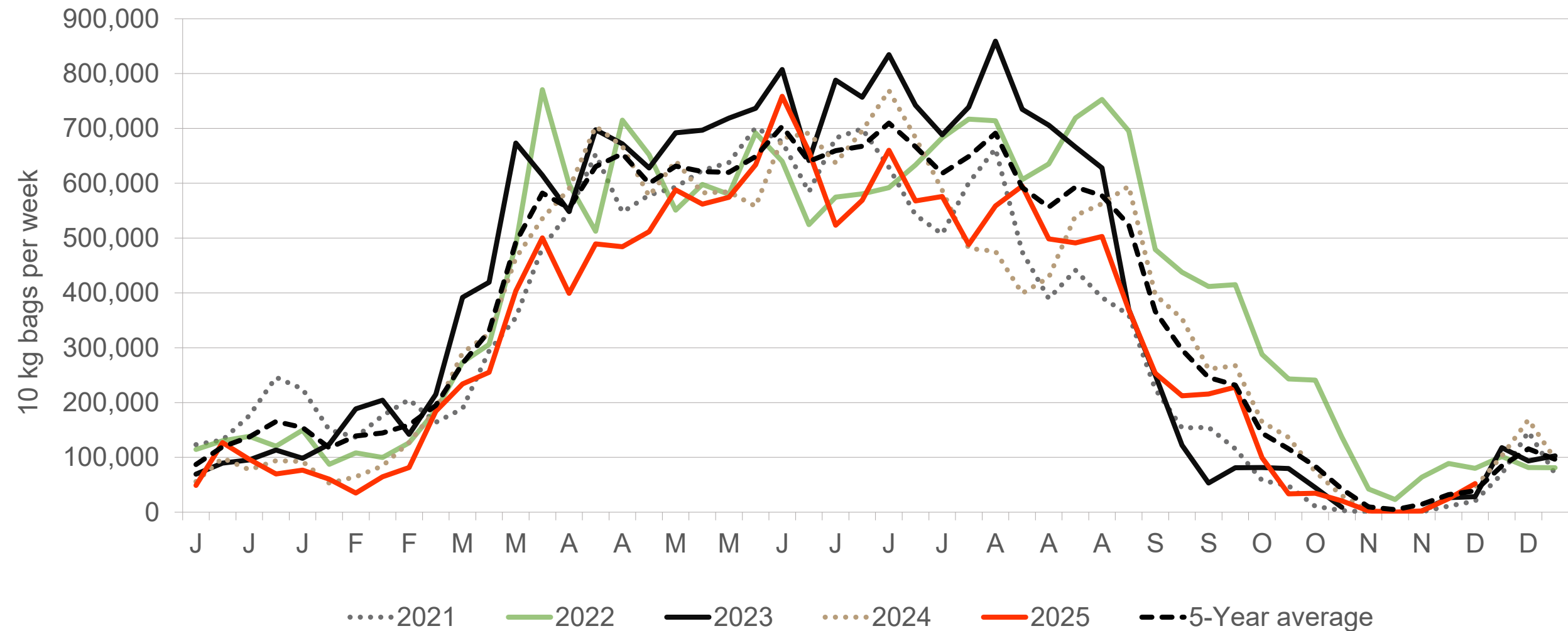
North-West: Amount of 10 kg bags per week sold on FPMs (all classes)



Sold 26% bags **more** than the first 49 weeks of 2024 and 1,293,379 **more** than the 5-year average (2020 to 2024) of the first 49 weeks of each year.

Data disclaimer: Potatoes SA does not take responsibility for the accuracy or interpretation of company data re-purposed by 3rd parties

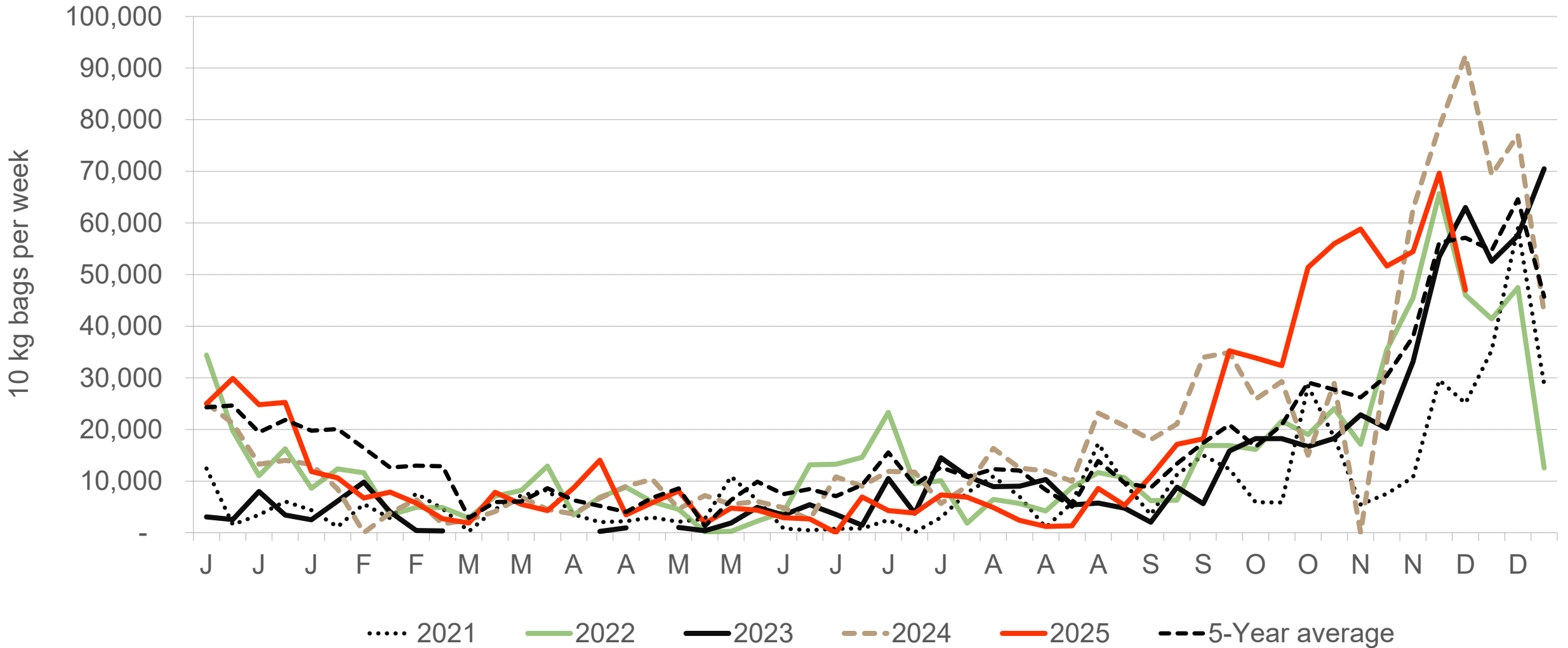
Western Free State : Amount of 10 kg bags per week sold on FPMs (all classes)



Sold 11% bags **less** than the first 49 weeks of 2024 and 3,053,968 bags **less** than the 5-year average (2020 to 2024) of the first 49 weeks of each year.

Data disclaimer: Potatoes SA does not take responsibility for the accuracy or interpretation of company data re-purposed by 3rd parties

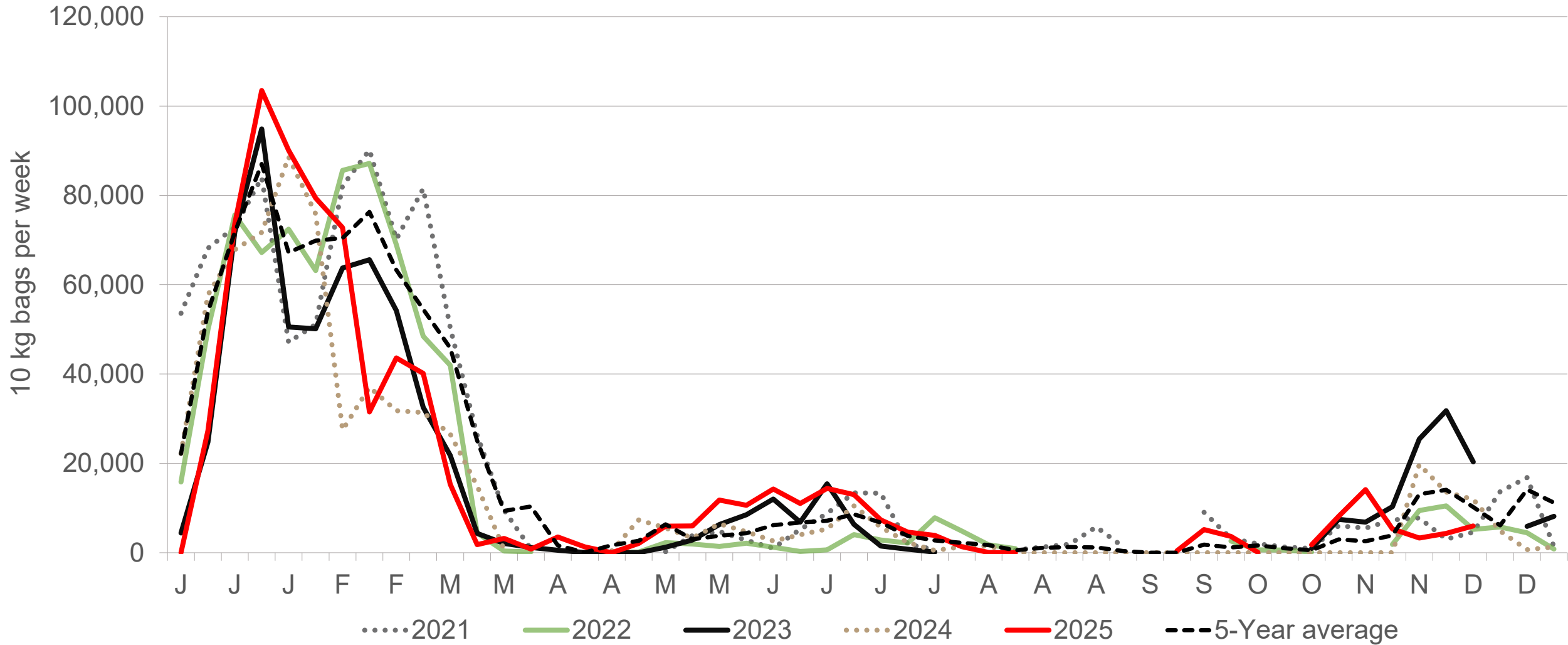
Eastern Cape: Amount of 10 kg bags per week sold on FPMs (all classes)



Sold 0% bags **more** than the first 49 weeks of 2024 and 142,377 bags **more** than the 5-year average (2020 to 2024) of the 49 weeks of each year.

Data disclaimer: Potatoes SA does not take responsibility for the accuracy or interpretation of company data re-purposed by 3rd parties

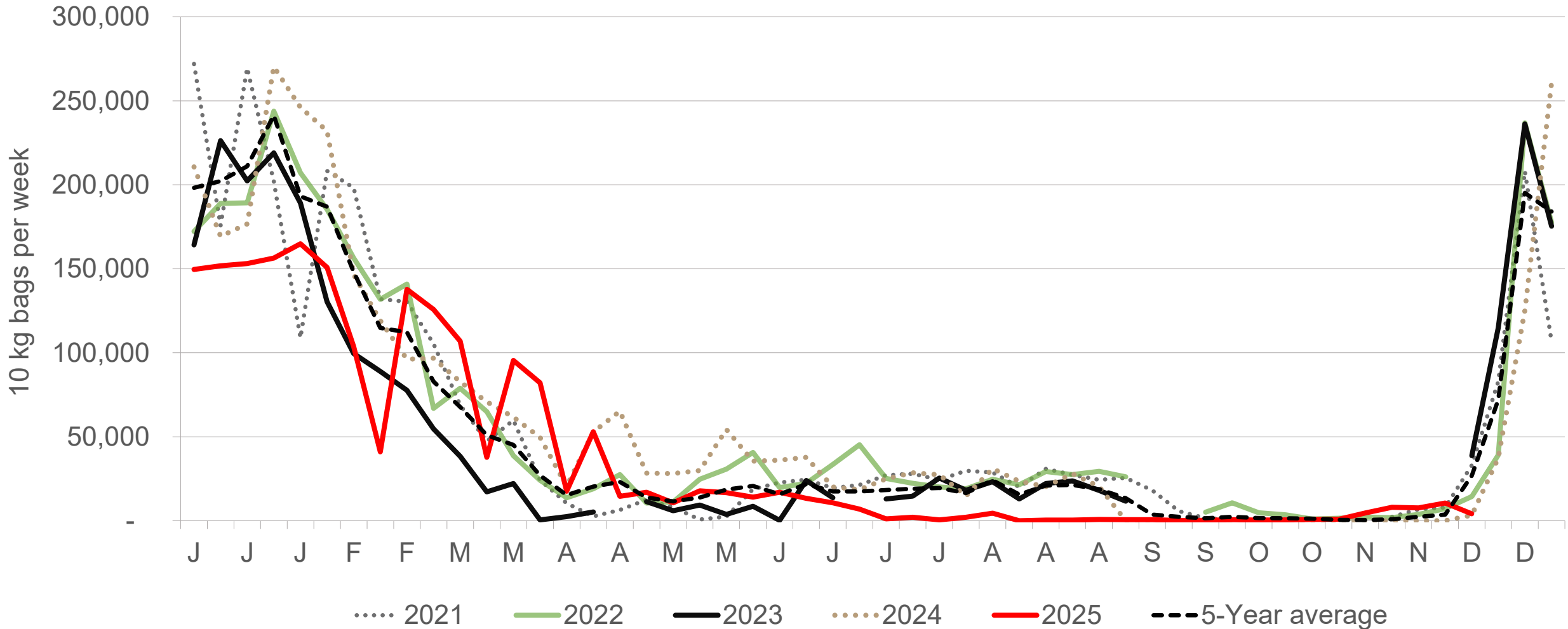
Mpumalanga: Amount of 10 kg bags per week sold on FPMs (all classes)



Sold 13% bags **more** than the first 49 weeks of 2024 and 107,257 bags **less** than the 5-year average (2020 to 2024) of the 49 weeks of each year.

Data disclaimer: Potatoes SA does not take responsibility for the accuracy or interpretation of company data re-purposed by 3rd parties

Gauteng: Amount of 10 kg bags per week sold on FPMs (all classes)



Sold 28% bags **less** than the first 49 weeks of 2024 and 409,298 bags **less** than the 5-year average (2020 to 2024) of the first 49 weeks of each year.

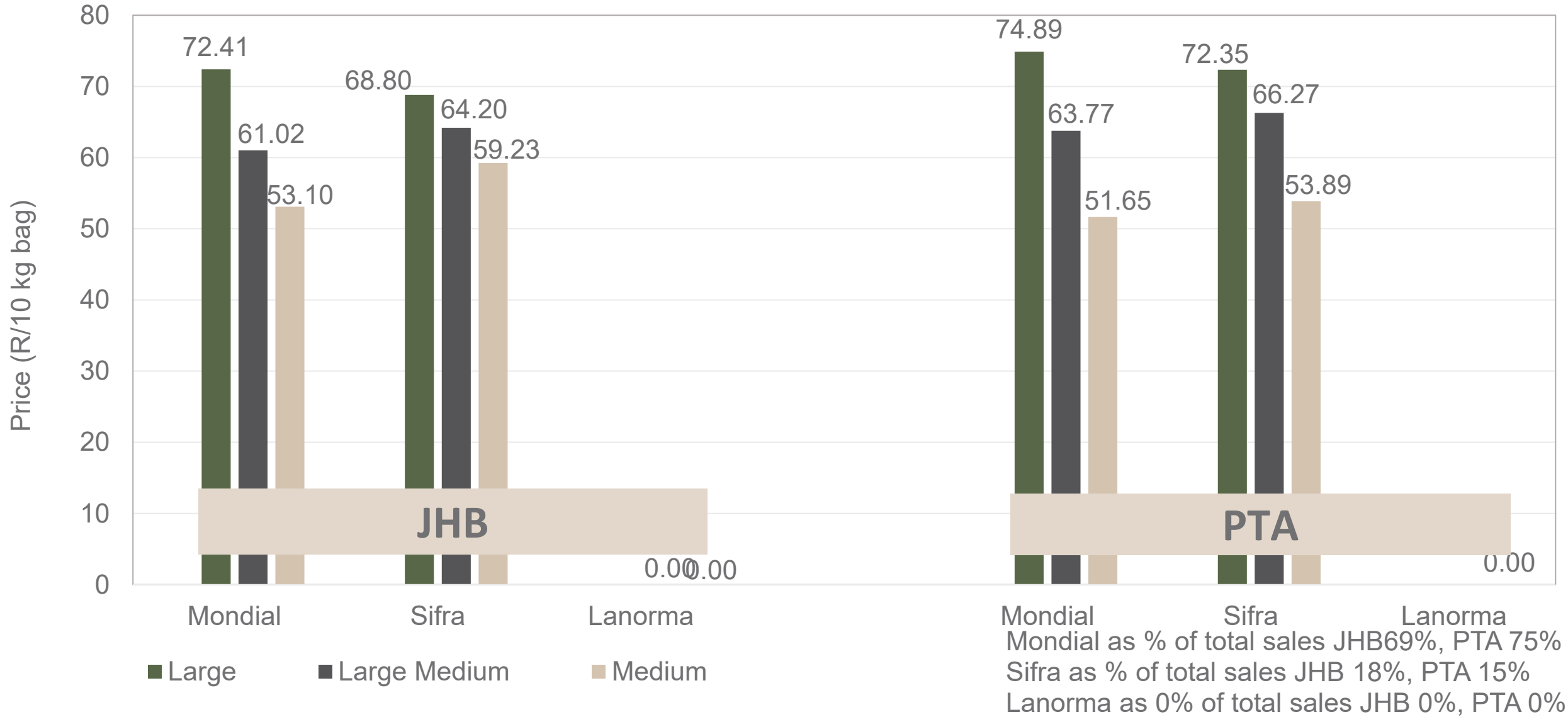
Data disclaimer: Potatoes SA does not take responsibility for the accuracy or interpretation of company data re-purposed by 3rd parties

Average weekly prices and volumes for 10 kg bags of potatoes sold on selected markets from selected production regions

Klas & Grootte	Limpopo				Limpopo				Limpopo				Sandveld		KwaZulu-Natal				Eastern Cape				All Regions		
	JOH		PRE		DUR		SPR		BLO		KLE		CAP		DUR		PIE		POR		EAS		All Markets		
	Volume 10kg	Prices R/10kg	Volume 10kg	Prices R/10kg	Volume 10kg	Prices R/10kg	Volume 10kg	Prices R/10kg	Volume 10kg	Prices R/10kg	Volume 10kg	Prices R/10kg	Volume 10kg	Prices R/10kg	Volume 10kg	Prices R/10kg	Volume 10kg	Prices R/10kg	Volume 10kg	Prices R/10kg	Volume 10kg	Prices R/10kg	Volume 10kg	Prices R/10kg	
1L	149 417	69.98	69 871	73.37	4 014	69.43	17 741	72.71	6 204	83.93	11 615	80.15	21 268	72.95	22 569	67.13	6 055	70.69	1 459	57.65	5 903	78.34	456 916	72.51	
1L/M	216 434	59.17	102 364	62.28	13 362	68.39	27 011	60.95	11 625	68.95	15 020	59.18	26 369	64.50	32 204	62.06	7 101	64.23	2 756	54.61	5 023	73.11	602 803	62.96	
1M	198 725	51.58	87 440	50.73	12 774	58.70	28 252	49.13	6 564	61.35	18 272	46.03	34 037	59.88	32 827	58.59	4 731	59.68	2 618	52.51	6 769	68.28	536 390	54.70	
1S	72 007	26.12	31 061	23.53	7 484	38.39	5 544	26.89	865	40.44	4 883	25.52	24 537	39.34	13 343	42.55	4 315	43.11	970	29.97	4 574	50.30	201 935	31.66	
1S/M	59 588	34.64	29 686	33.45	574	61.78	6 494	38.21	1 230	46.17	4 873	32.22	2 284	47.56	4 012	46.89	742	56.99	-	-	837	58.06	139 635	38.19	
1XL	-	-	-	-	-	-	-	-	-	-	-	-	-	-	-	-	-	-	-	-	-	-	-	-	
1XS	39 851	15.76	-	-	-	-	-	-	-	-	-	-	-	-	-	-	-	-	-	-	-	-	44 224	18.44	
1XXS	1 138	14.85	-	-	-	-	-	-	-	-	-	-	-	-	-	-	-	-	-	-	-	-	2 760	29.68	
2L	27 171	60.34	15 705	63.82	330	77.88	3 776	67.60	3 410	71.69	3 662	71.43	7 146	61.15	1 682	57.79	3 440	60.75	558	54.64	858	69.95	92 121	63.03	
2L/M	19 890	50.89	14 822	55.18	640	62.72	3 760	55.89	1 730	65.61	2 877	54.51	12 552	53.03	2 950	53.32	3 052	53.55	156	62.82	1 303	65.47	78 460	54.35	
2M	19 081	42.38	11 559	42.86	1 099	53.90	3 089	47.66	835	58.60	4 139	31.73	25 663	45.35	1 274	49.53	2 923	48.91	1 150	44.40	4 977	50.81	92 581	44.70	
2S	8 157	23.62	2 436	20.91	176	43.75	110	26.00	110	49.00	2 756	16.69	8 803	30.88	610	31.66	1 407	30.89	905	23.53	2 405	37.22	35 524	25.30	
2S/M	2 612	29.55	3 475	26.64	-	-	140	40.64	440	49.00	1 406	29.51	415	33.39	-	-	81	35.00	-	-	-	-	12 795	28.78	
2XL	-	-	-	-	-	-	-	-	-	-	-	-	-	-	-	-	-	-	-	-	-	-	-	-	
2XS	533	9.64	-	-	-	-	-	-	-	-	-	-	-	-	-	-	-	-	-	-	-	-	1 341	12.98	
2XXS	-	-	-	-	-	-	-	-	-	-	-	-	-	-	-	-	-	-	-	-	-	-	240	7.70	
3L	1 900	45.70	550	44.00	-	-	661	62.66	-	-	456	45.94	338	29.96	-	-	870	46.34	-	-	-	-	10 058	51.97	
3L/M	6 788	32.14	1 701	44.72	126	90.00	379	46.40	990	48.33	1 760	42.44	-	-	776	44.39	1 635	36.44	-	-	220	49.32	16 236	39.47	
3M	3 290	29.95	1 952	38.81	-	-	201	36.47	-	-	260	33.08	2 190	18.01	100	50.00	1 231	44.03	232	37.20	1 954	48.23	16 270	35.70	
3S/M	110	14.00	-	-	-	-	-	-	-	-	-	-	-	-	-	-	-	-	-	-	-	259	25.91	1 680	23.73
3XS	-	-	-	-	-	-	-	-	-	-	-	-	-	-	-	-	-	-	-	-	-	-	-	-	
3XXS	-	-	-	-	-	-	-	-	-	-	-	-	-	-	-	-	-	-	-	-	-	-	-	-	
4L	-	-	26	30.00	-	-	219	59.68	-	-	-	-	332	40.00	-	-	138	41.45	-	-	-	-	715	45.94	
4L/M	-	-	-	-	-	-	-	-	-	-	-	-	257	29.19	-	-	420	38.48	-	-	-	-	797	37.97	
4M	-	-	2 086	16.47	-	-	-	-	-	-	-	-	147	26.63	-	-	945	33.01	-	-	-	-	3 298	22.70	
4S	-	-	486	5.84	-	-	-	-	-	-	-	-	1 249	11.32	-	-	390	21.38	-	-	-	-	2 125	11.91	
4S/M	-	-	-	-	-	-	-	-	-	-	-	-	-	-	-	-	-	-	-	-	-	-	845	5.59	
Total	826 782	51.09	383 637	53.33	43 735	56.43	99 391	54.83	35 153	66.46	72 835	50.76	184 682	50.53	115 118	57.54	41 134	53.57	10 804	48.36	36 198	60.49	2 402 542	54.88	

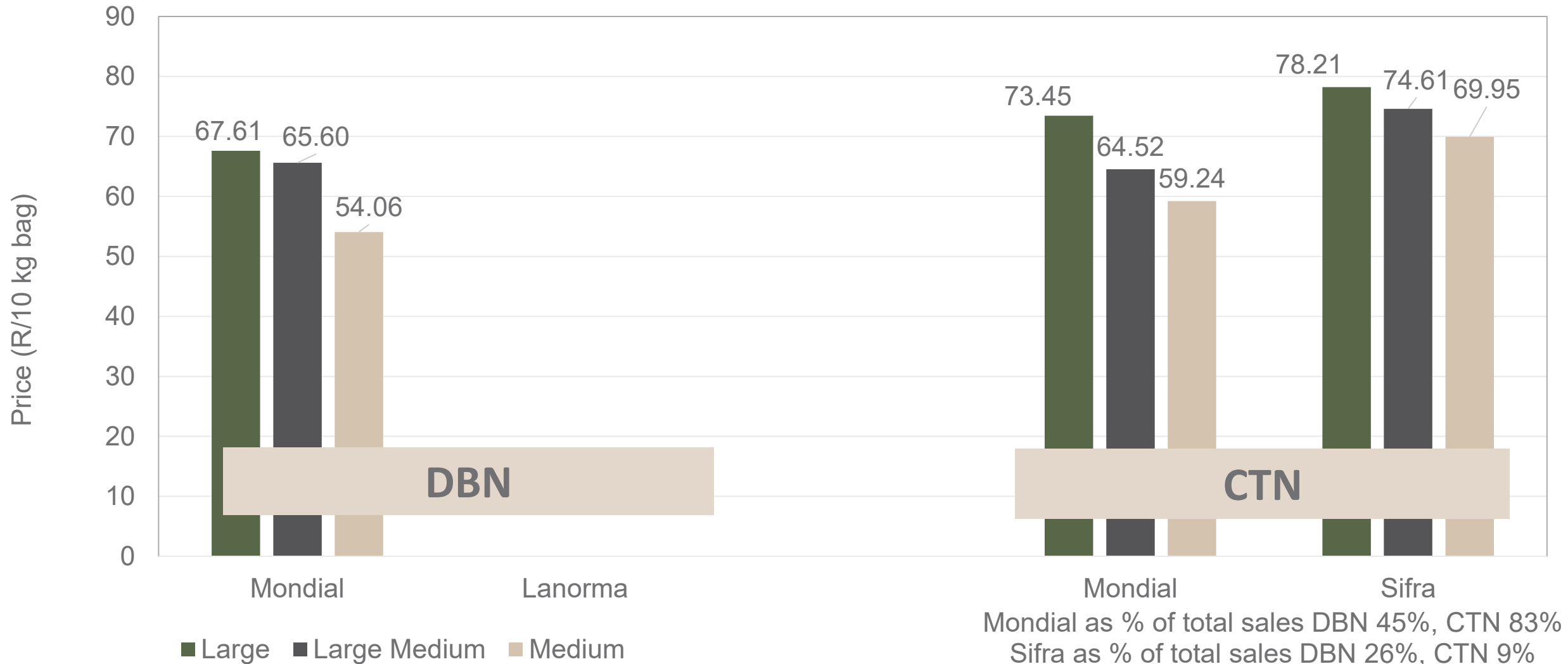
Data disclaimer: Potatoes SA does not take responsibility for the accuracy or interpretation of company data re-purposed by 3rd parties

PTA & JHB markets: Average Prices - Different Sizes (only 10 kg bags)



Data disclaimer: Potatoes SA does not take responsibility for the accuracy or interpretation of company data re-purposed by 3rd parties

DBN & CTN markets: Average Prices - Different Sizes (only 10 kg bags)



Mondial as % of total sales DBN 45%, CTN 83%
 Sifra as % of total sales DBN 26%, CTN 9%
 Lanorma as % of total sales DBN 0%, CTN 0%


Data disclaimer: Potatoes SA does not take responsibility for the accuracy or interpretation of company data re-purposed by 3rd parties

Thank you for your time


Feel free to contact us

 Dikgetho@potatoes.co.za

Jodie@potatoes.co.za

 +27 (0)12 349 1906

 6 De Havilland Crescent
Persequor Techno Park
Persequor Park
Pretoria

 www.potatoes.co.za



Potatoes
Aartappels SA