



Weekly Market Information

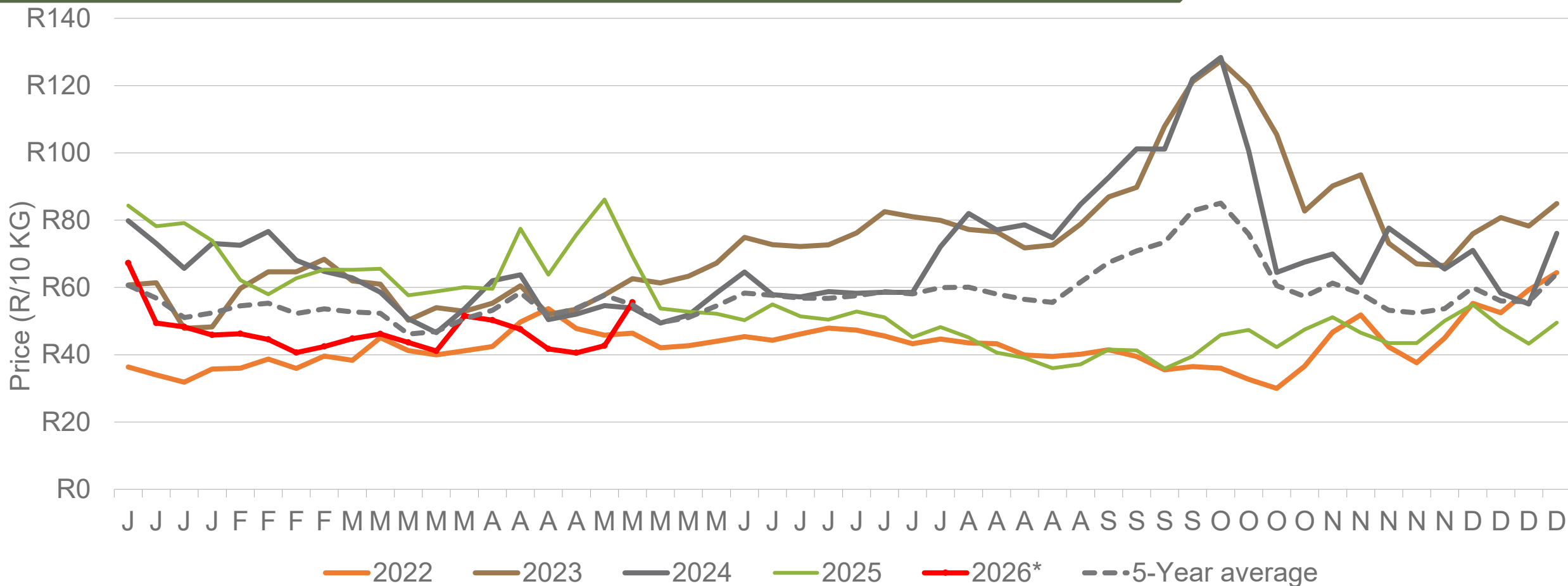
8 May 2026



**Potatoes
Aartappels SA**

www.potatoes.co.za

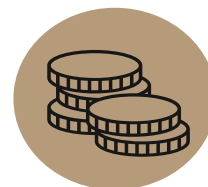
Average weekly price – all markets & all classes



Number of bags sold

4%

(Week on Week)



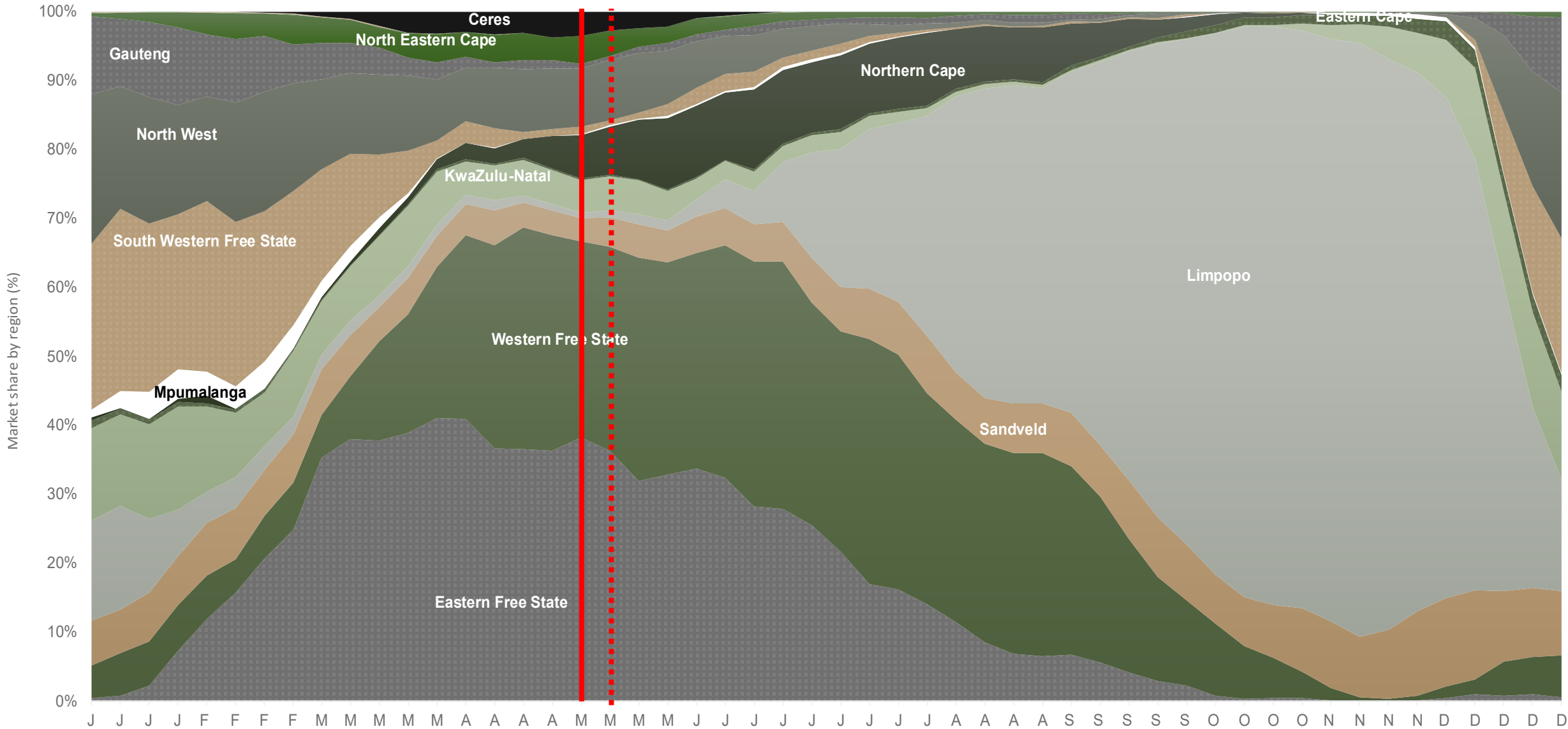
Average weekly price

30%

(Week on week)

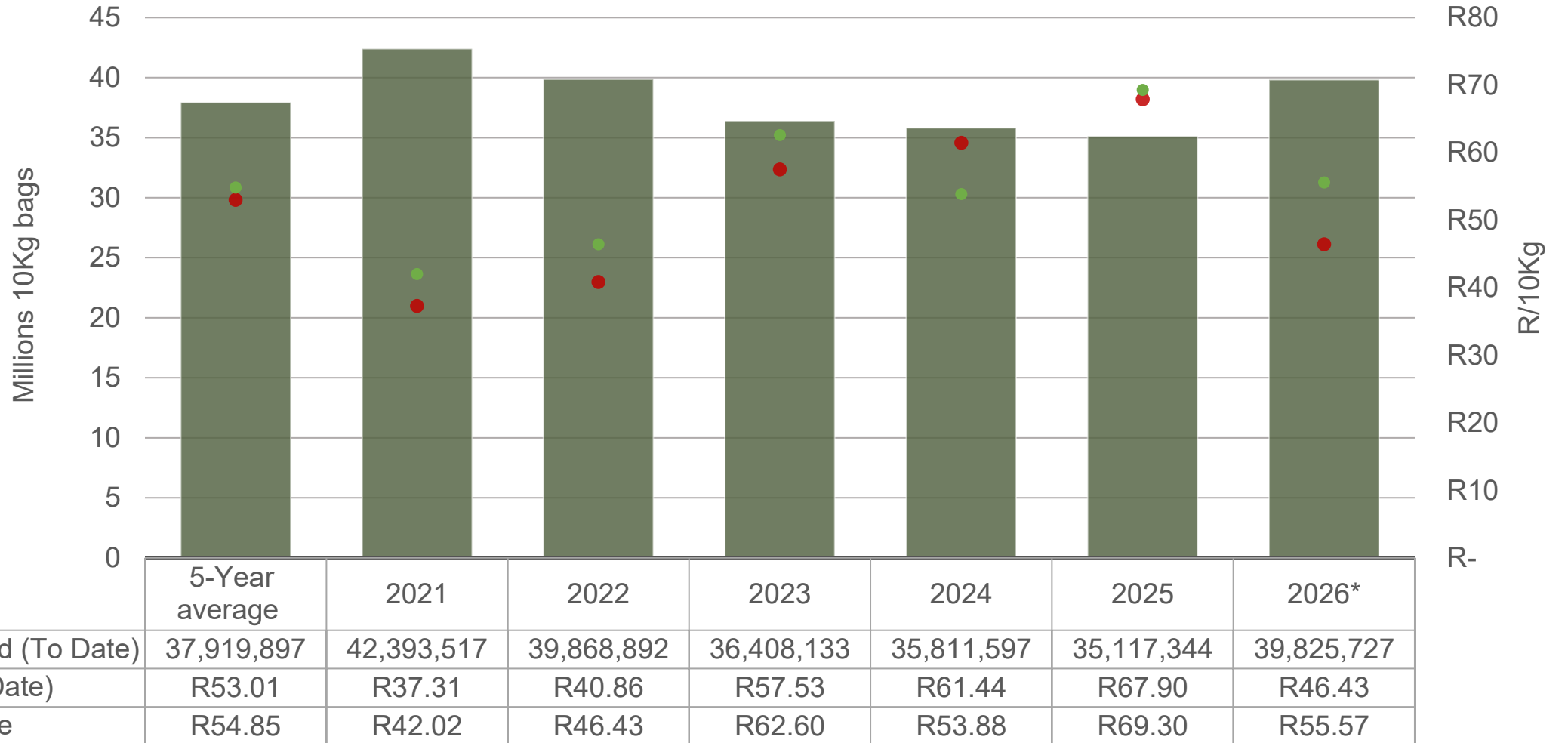


Market share of regions on fresh produce markets 2021-2025



Data disclaimer: Potatoes SA does not take responsibility for the accuracy or interpretation of company data re-purposed by 3rd parties

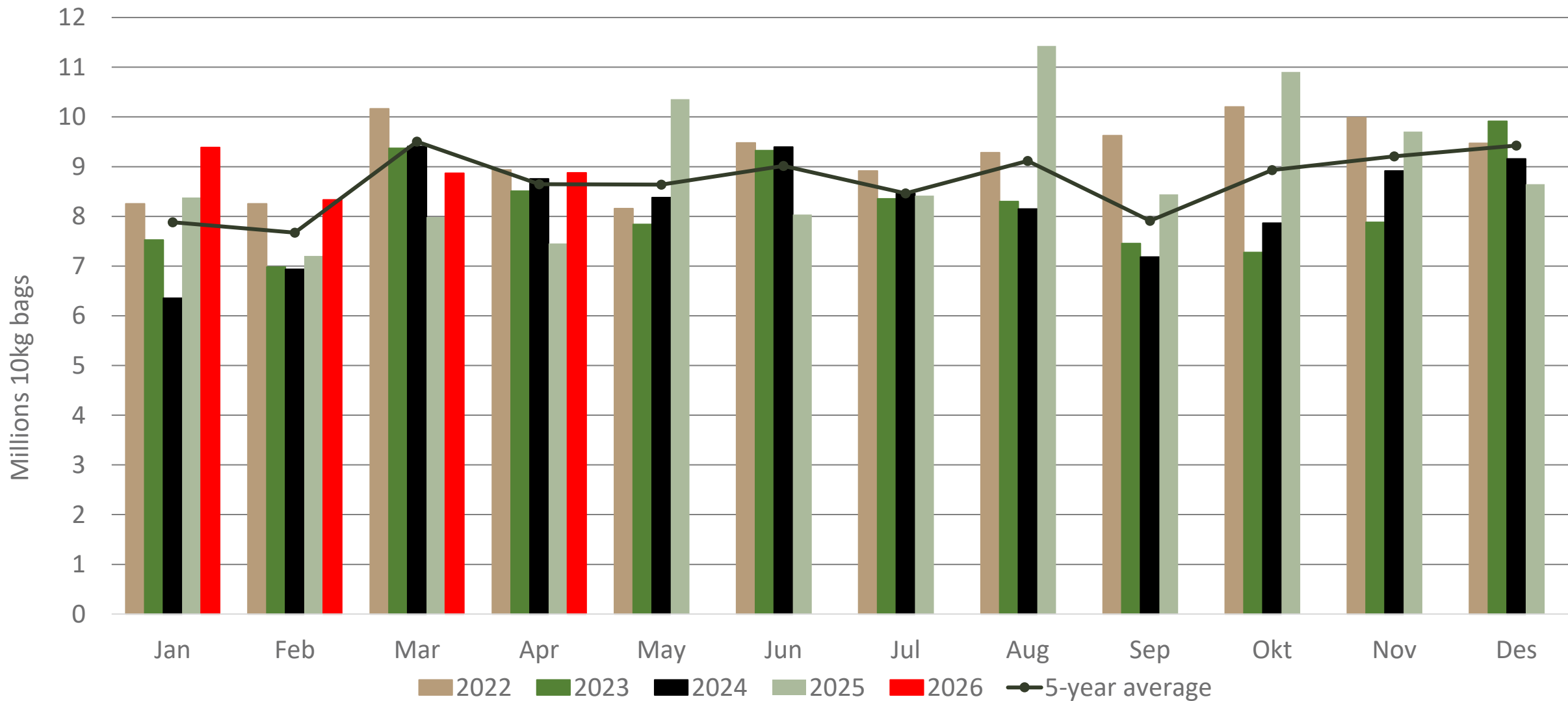
Cumulative total number of 10 kg bags sold on markets



Sold 1,905,830 bags **more** than the **5-year average** (2021 to 2025) of the first 19 weeks of 2026

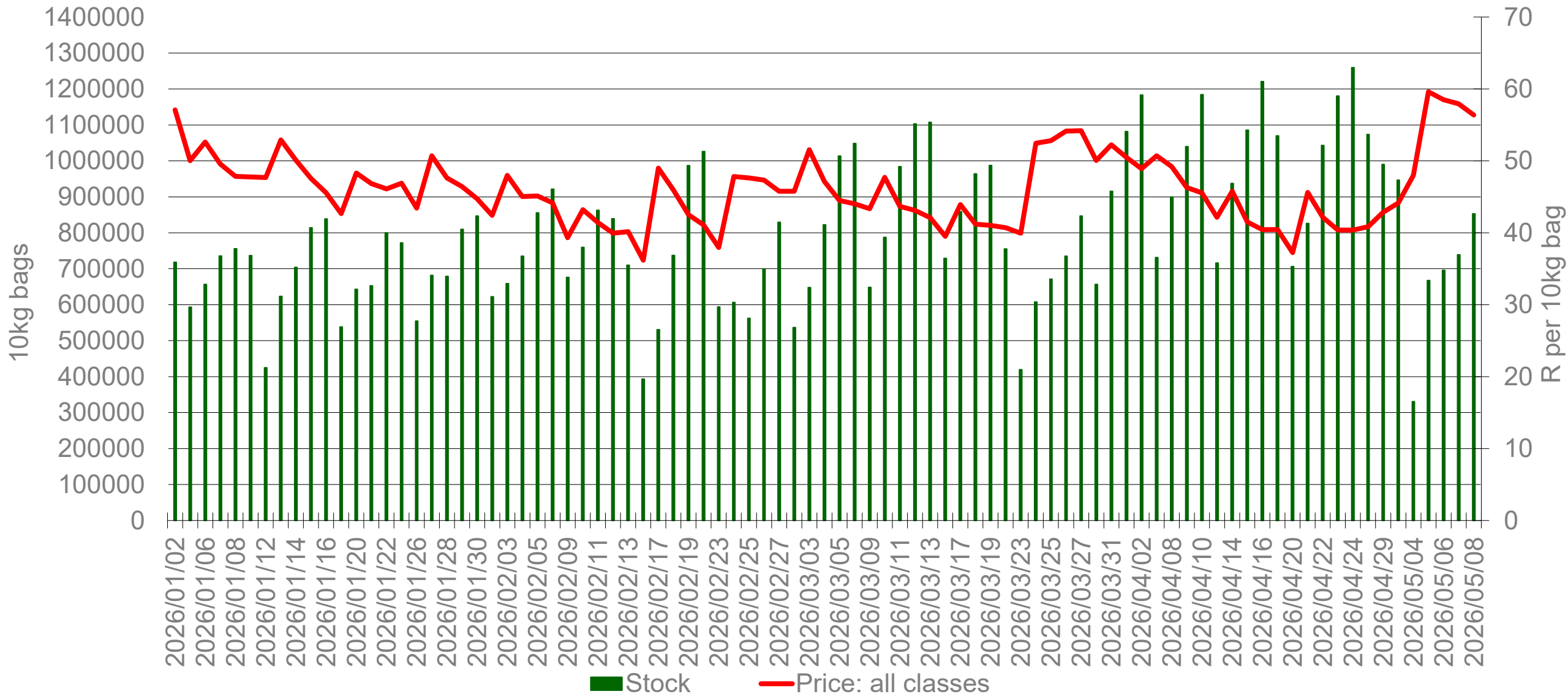
Data disclaimer: Potatoes SA does not take responsibility for the accuracy or interpretation of company data re-purposed by 3rd parties

Monthly sales volumes on markets: Potatoes



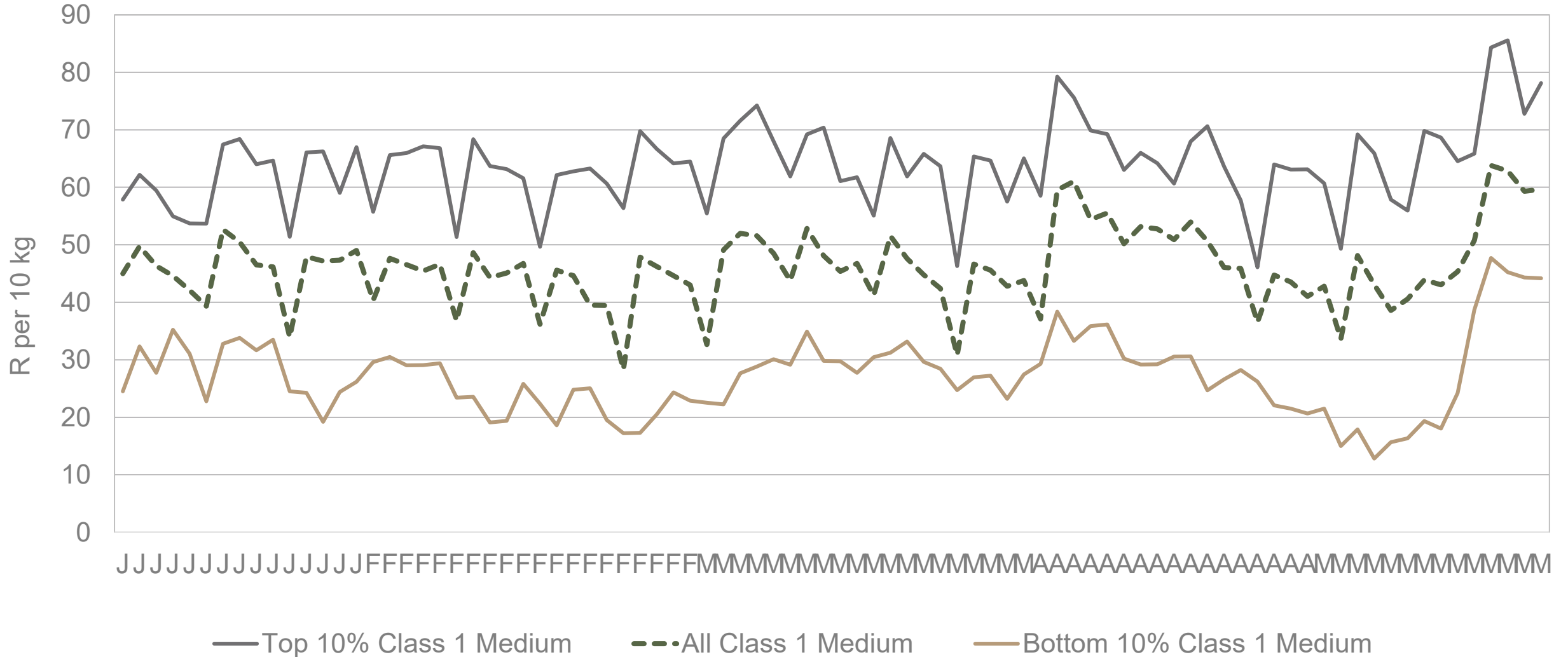
Data disclaimer: Potatoes SA does not take responsibility for the accuracy or interpretation of company data re-purposed by 3rd parties

RSA daily price versus daily available stocks (all classes & all sizes)



Data disclaimer: Potatoes SA does not take responsibility for the accuracy or interpretation of company data re-purposed by 3rd parties

JHB market daily : Top 10% versus bottom 10% prices – Class 1 Medium (since January 2026)



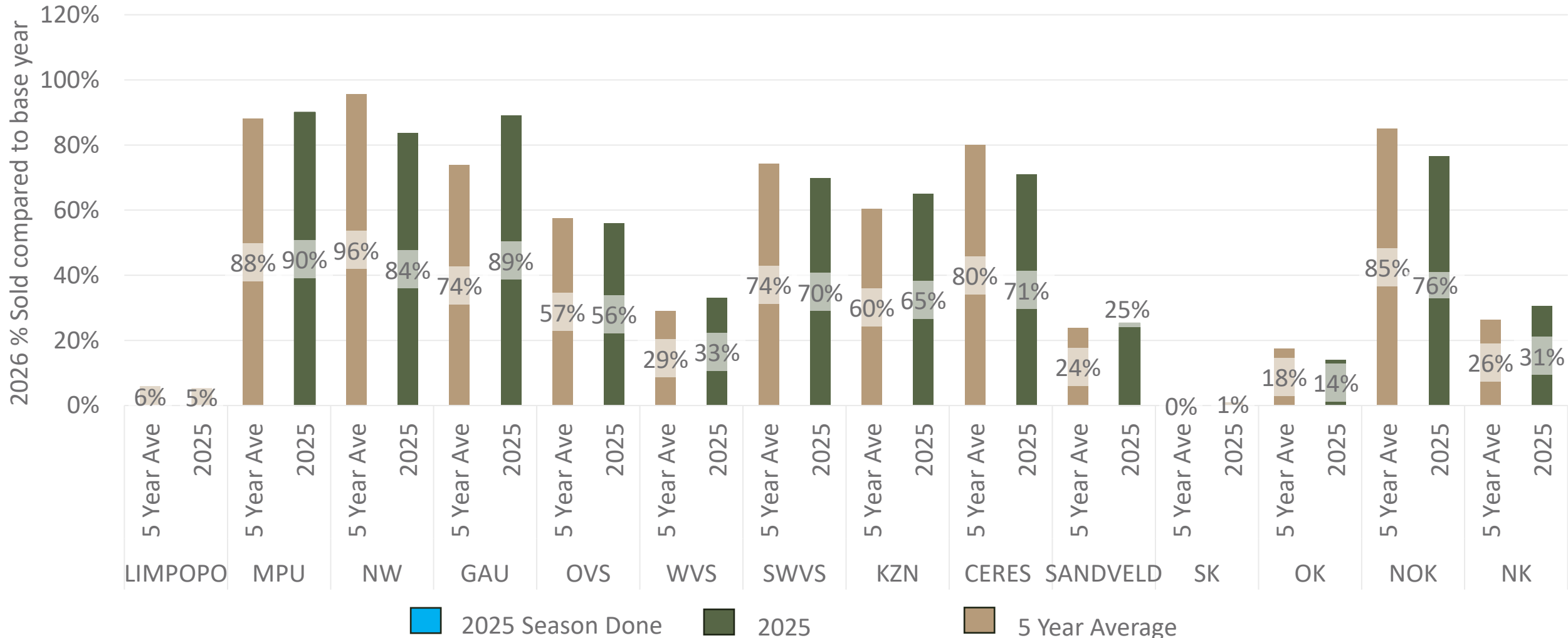
Data disclaimer: Potatoes SA does not take responsibility for the accuracy or interpretation of company data re-purposed by 3rd parties

FPM Sales pace comparison per region

2026 compared to 5-year average and 2025

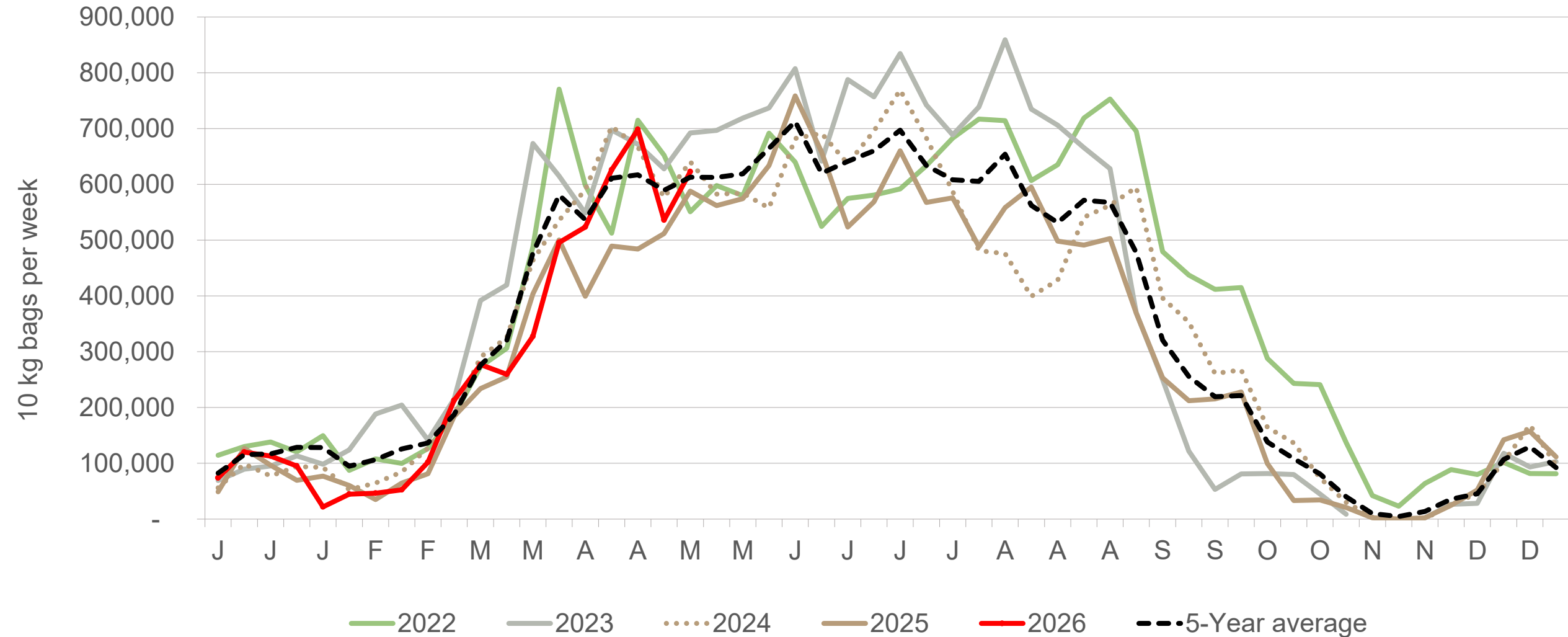


The *FPM Sales pace* compares the current year's cumulative volumes sold on the FPM with the previous year and the five-year average. Differences in these trends reflect variations in hectares planted, regional weather conditions, yield performance, and market timing. Blue indicates regions that are done delivering for this season. Seasons are based on calendar year.
Note: This comparison is based on total volumes sold, not on hectares planted



Data disclaimer: Potatoes SA does not take responsibility for the accuracy or interpretation of company data re-purposed by 3rd parties

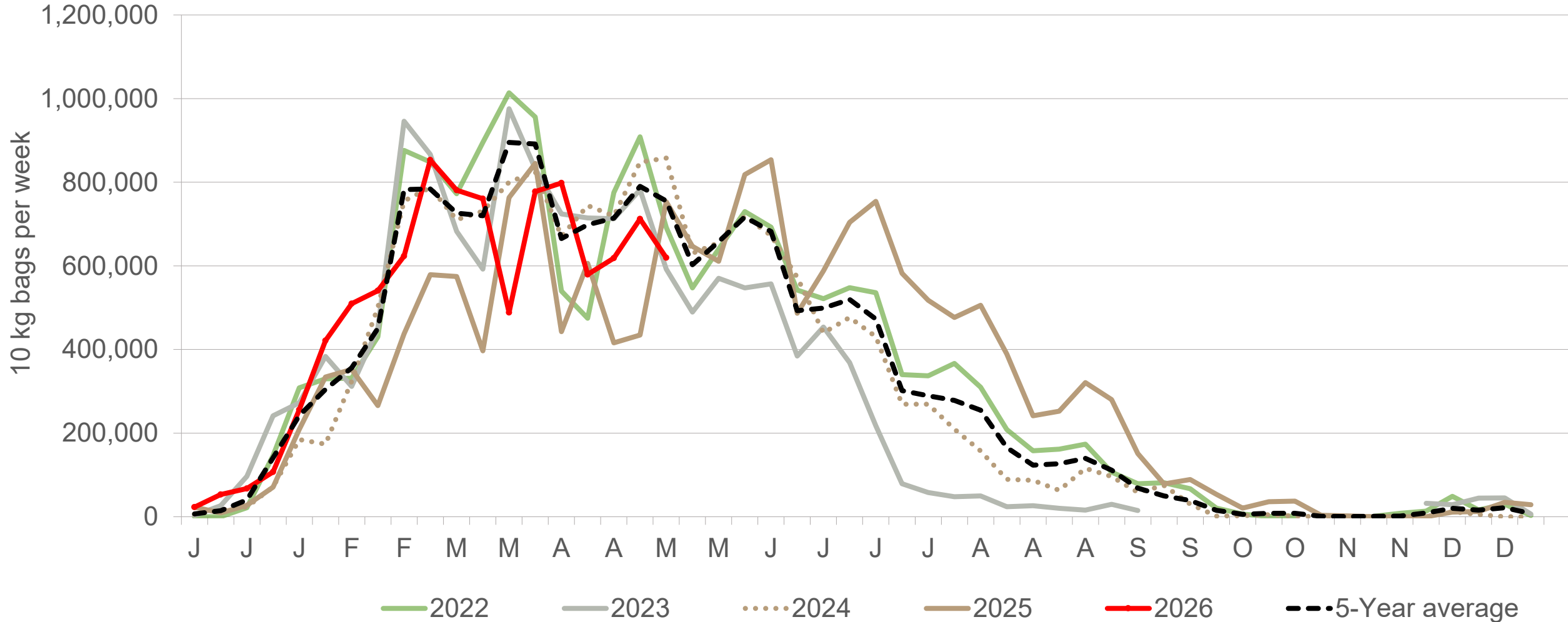
Western Free State : Amount of 10 kg bags per week sold on FPMs (all classes)



Sold 11% bags **more** than the first 19 weeks of 2025 and 594,428 bags **less** than the 5-year average (2021 to 2025) of the first 19 weeks of each year.

Data disclaimer: Potatoes SA does not take responsibility for the accuracy or interpretation of company data re-purposed by 3rd parties

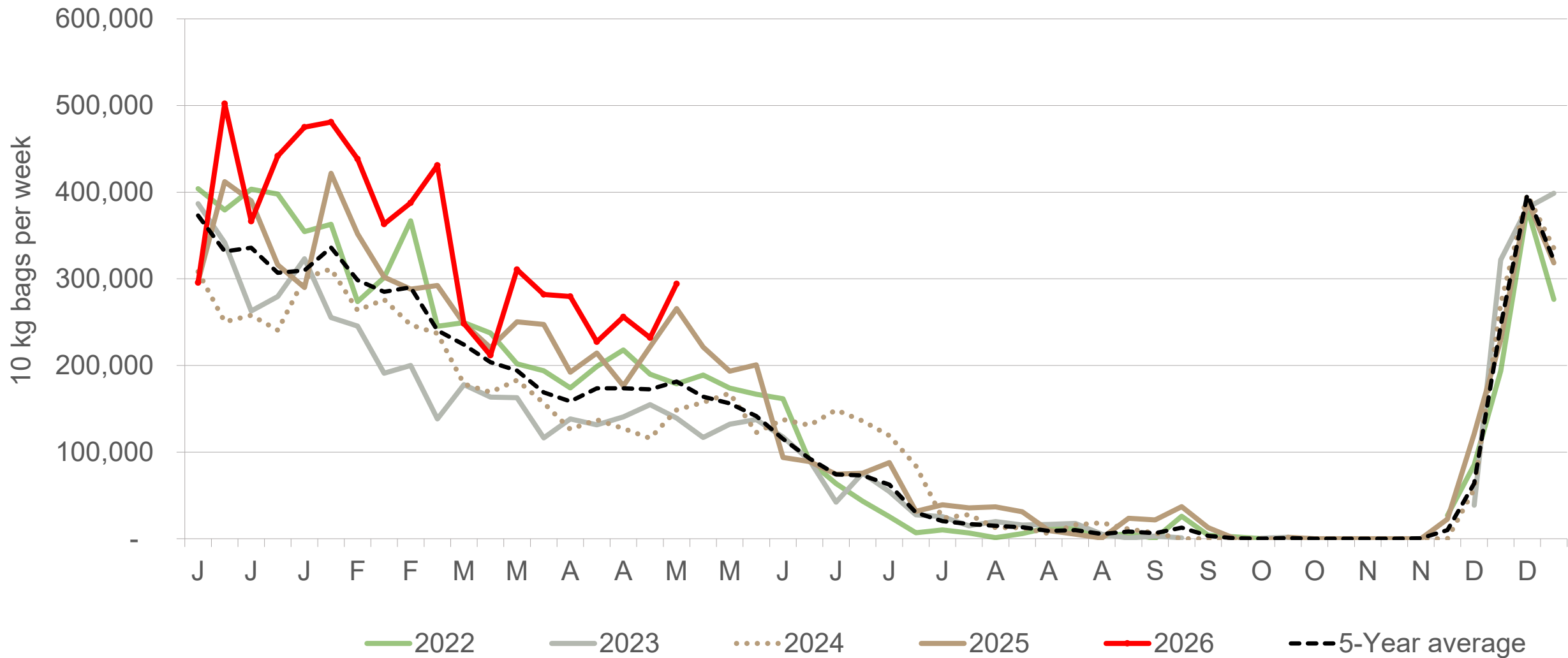
Eastern Free State: Amount of 10 kg bags per week sold on FPMs (all classes)



Sold 27% bags **more** than the first 19 weeks of 2025 and 387,748 **less** than the 5-year average (2021 to 2025) of the first 19 weeks of each year.

Data disclaimer: Potatoes SA does not take responsibility for the accuracy or interpretation of company data re-purposed by 3rd parties

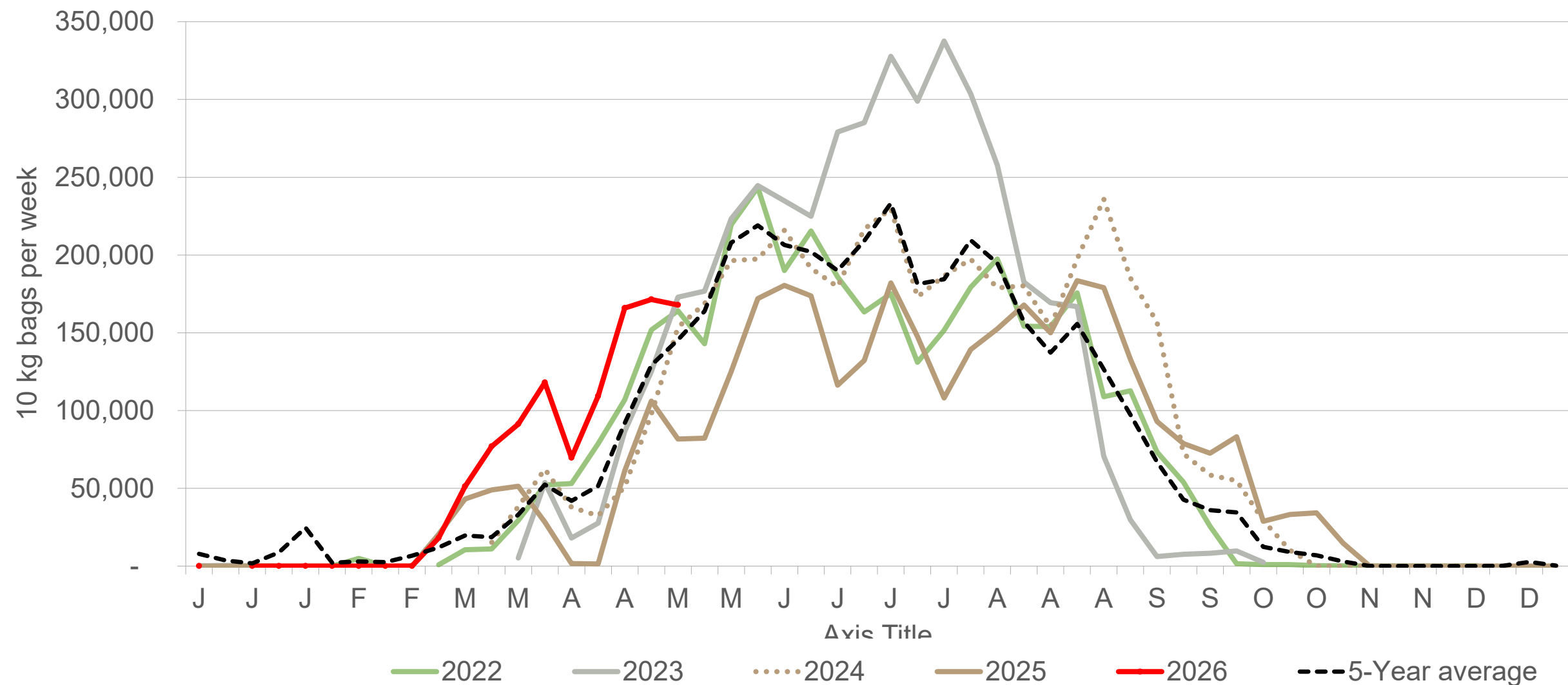
North-West: Amount of 10 kg bags per week sold on FPMs (all classes)



Sold 21% bags **more** than the first 19 weeks of 2025 and 1,767,176 **more** than the 5-year average (2021 to 2025) of the first 19 weeks of each year.

Data disclaimer: Potatoes SA does not take responsibility for the accuracy or interpretation of company data re-purposed by 3rd parties

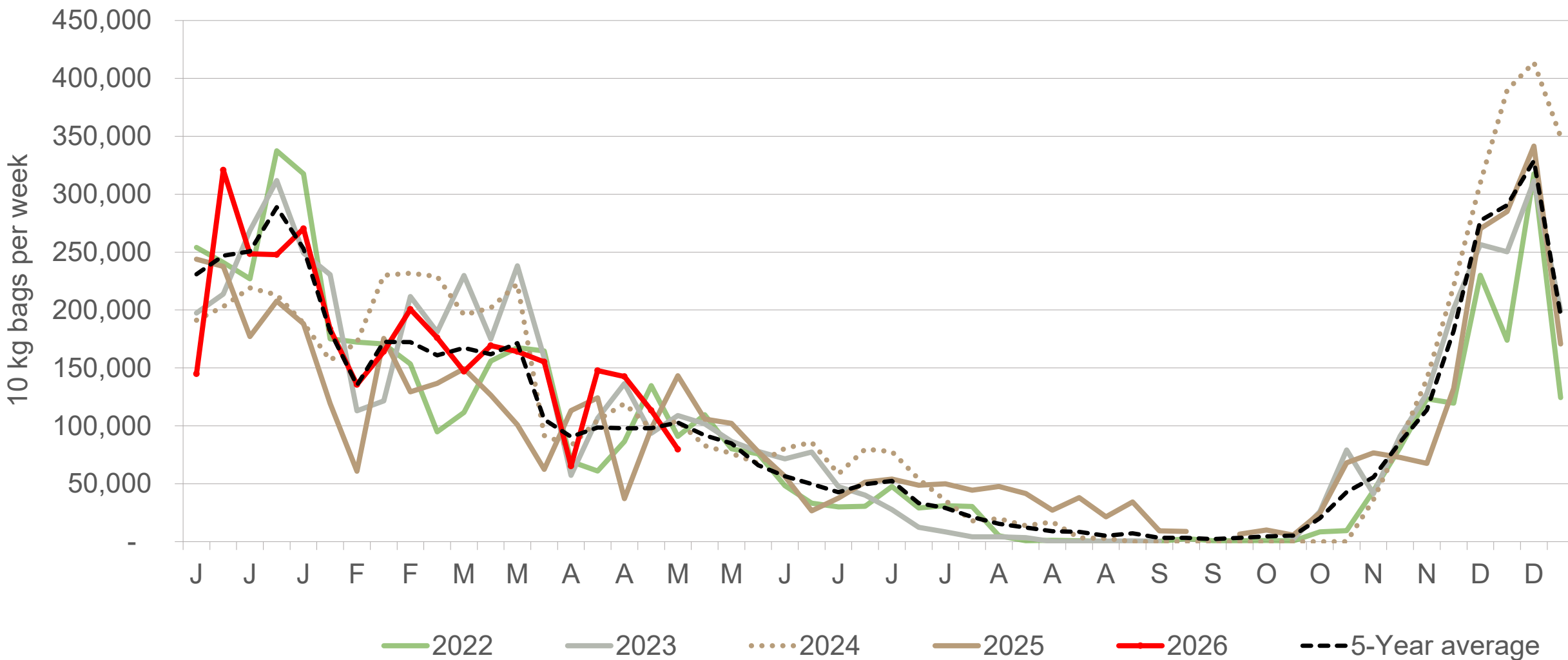
Northern Cape: Amount of 10 kg bags per week sold on FPMs (all classes)



Sold 134% bags **more** than the first 19 weeks of 2025 and 382,820 bags **more** than the 5-year average (2021 to 2025) of the first 19 weeks of each year.

Data disclaimer: Potatoes SA does not take responsibility for the accuracy or interpretation of company data re-purposed by 3rd parties

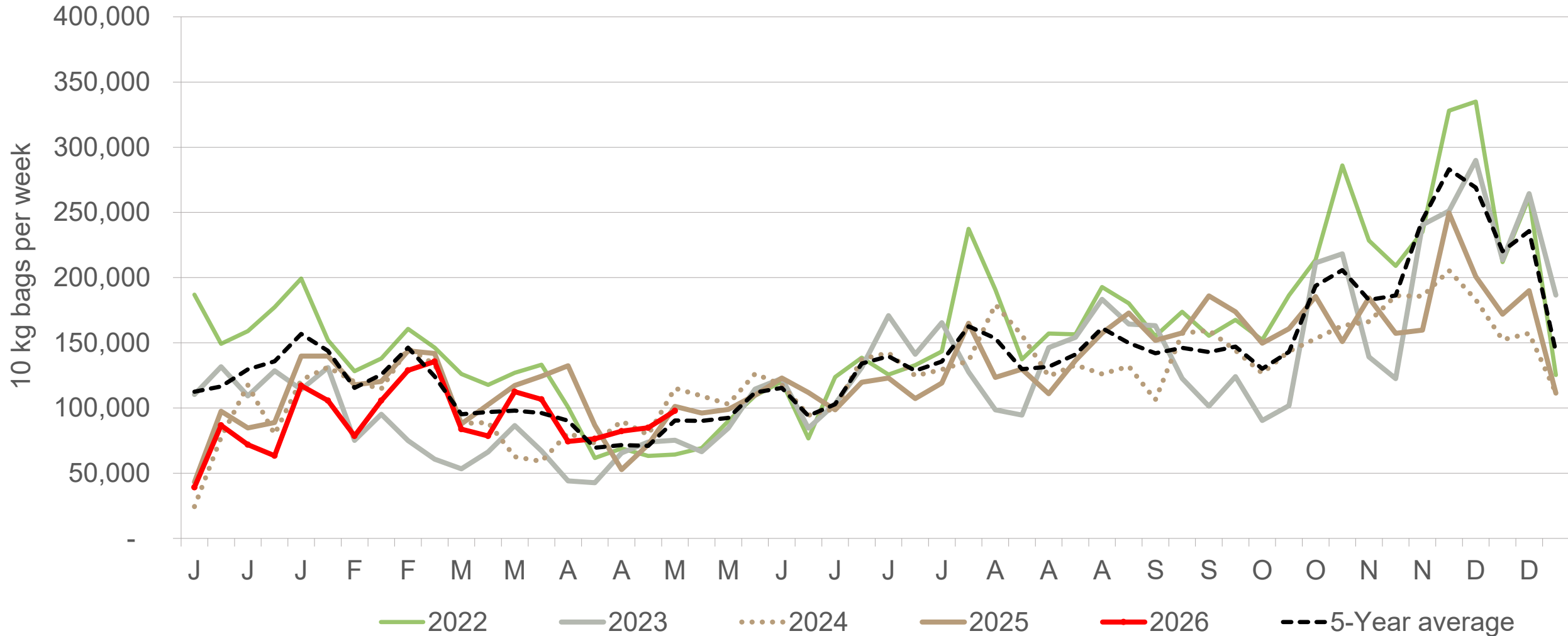
KwaZulu-Natal: Amount of 10 kg bags per week sold on FPMs (all classes)



Sold 25% bags **more** than the first 19 weeks of 2025 and 89,937 bags **more** than the 5-year average (2021 to 2025) of the first 19 weeks of each year.

Data disclaimer: Potatoes SA does not take responsibility for the accuracy or interpretation of company data re-purposed by 3rd parties

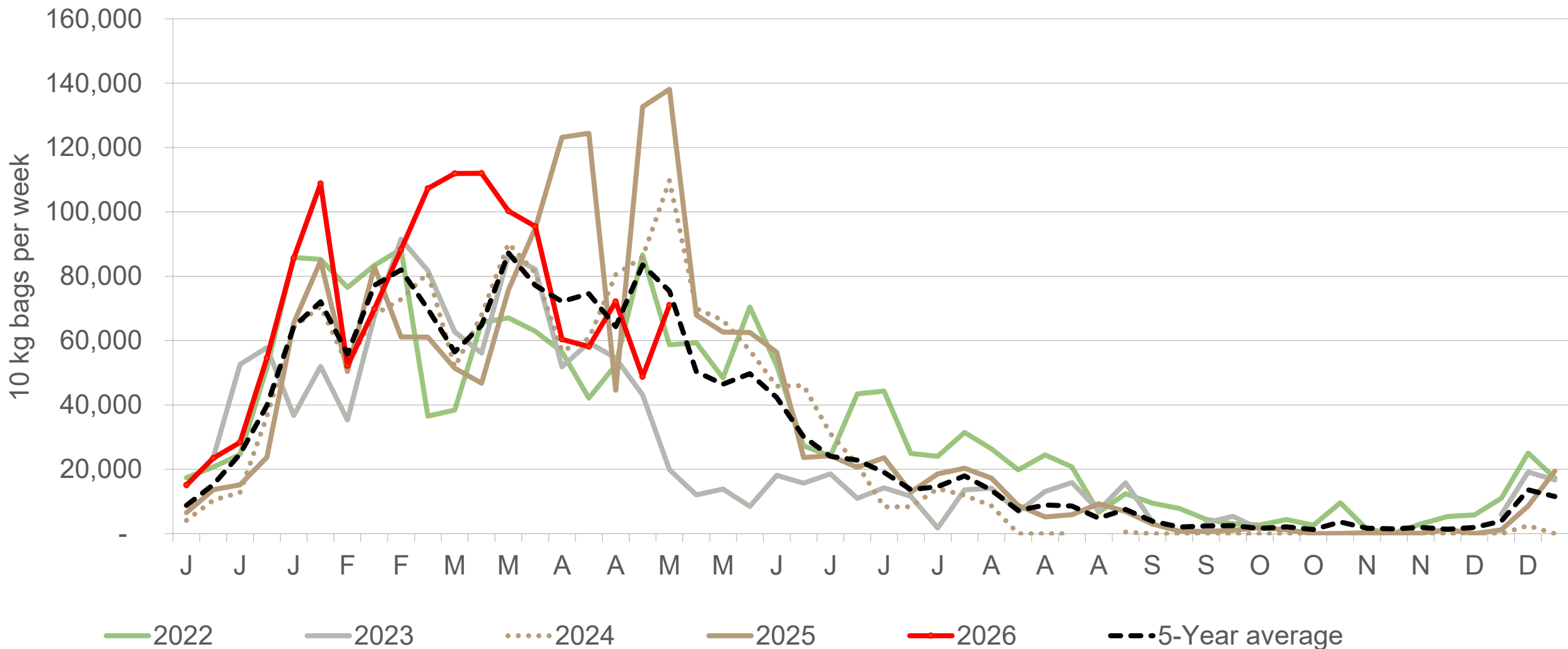
Sandveld: Amount of 10 kg bags per week sold on FPMs (all classes)



Sold 13% bags **less** than the first 19 weeks of 2025 and 355,495 bags **less** than the 5-year average (2021 to 2025) of the first 19 weeks of each year.

Data disclaimer: Potatoes SA does not take responsibility for the accuracy or interpretation of company data re-purposed by 3rd parties

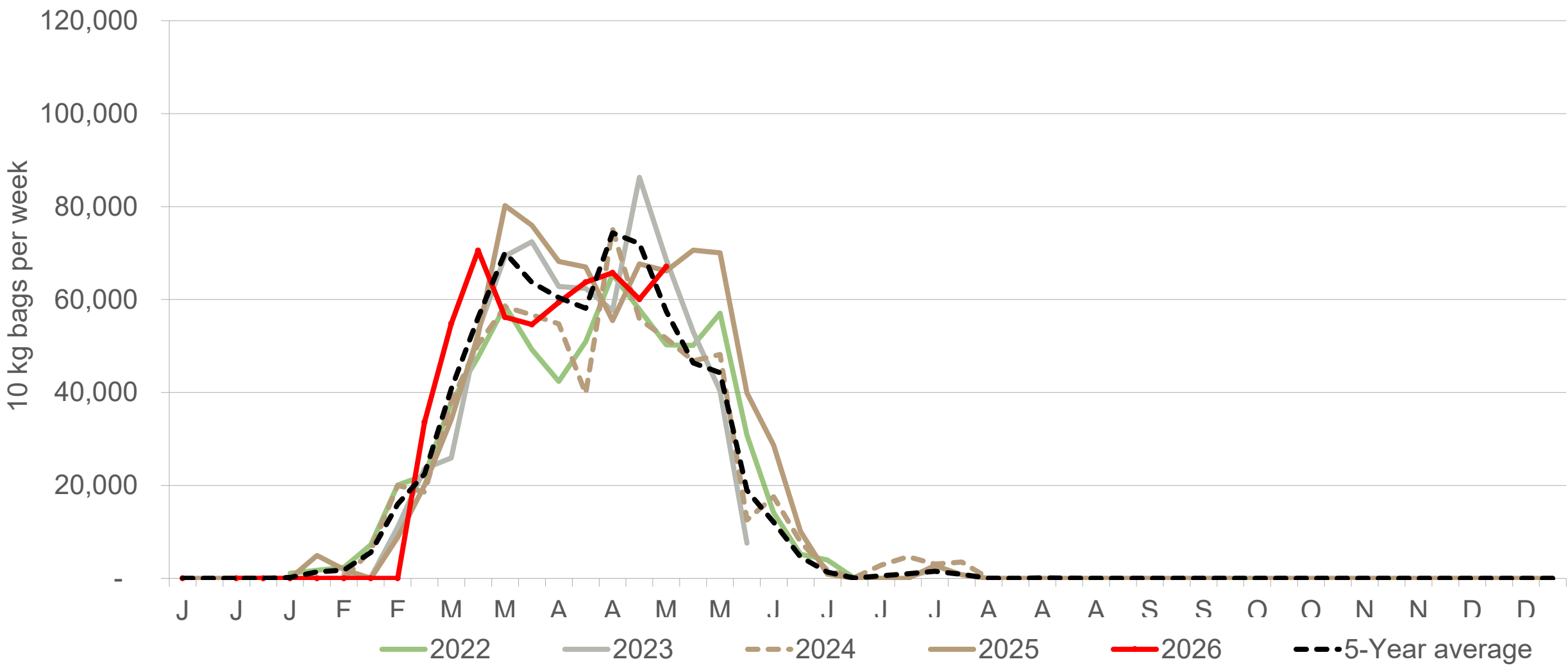
North Eastern Cape: Amount of 10 kg bags per week sold on FPMs (all classes)



Sold 5% bags **more** than the first 19 weeks of 2025 and 198,333 bags **more** than the 5-year average (2021 to 2025) of the first 19 weeks of each year.

Data disclaimer: Potatoes SA does not take responsibility for the accuracy or interpretation of company data re-purposed by 3rd parties

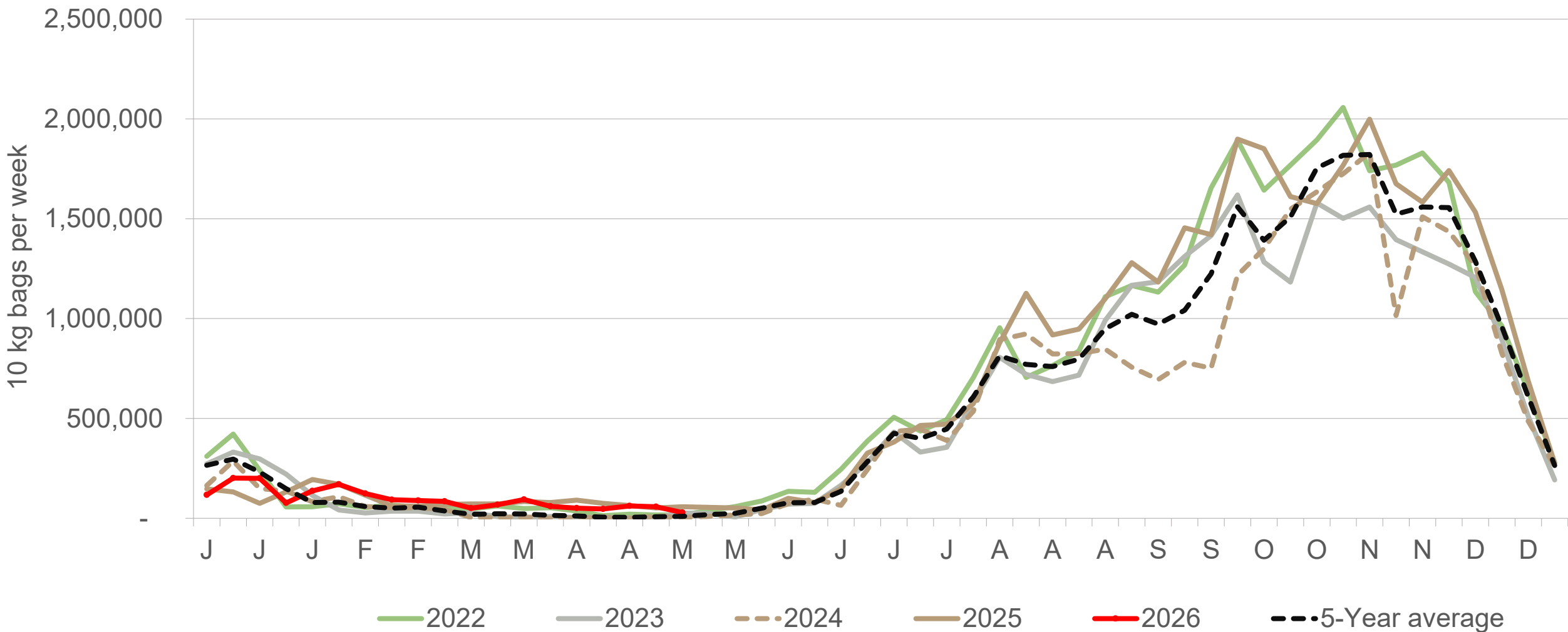
Ceres: Amount of 10 kg bags per week sold on FPMs (all classes)



Sold 3% bags **less** than the first 3 weeks of 2025 and 14,495 bags **less** than the 5-year average (2021 to 2025) of the first 19 weeks of each year.

Data disclaimer: Potatoes SA does not take responsibility for the accuracy or interpretation of company data re-purposed by 3rd parties

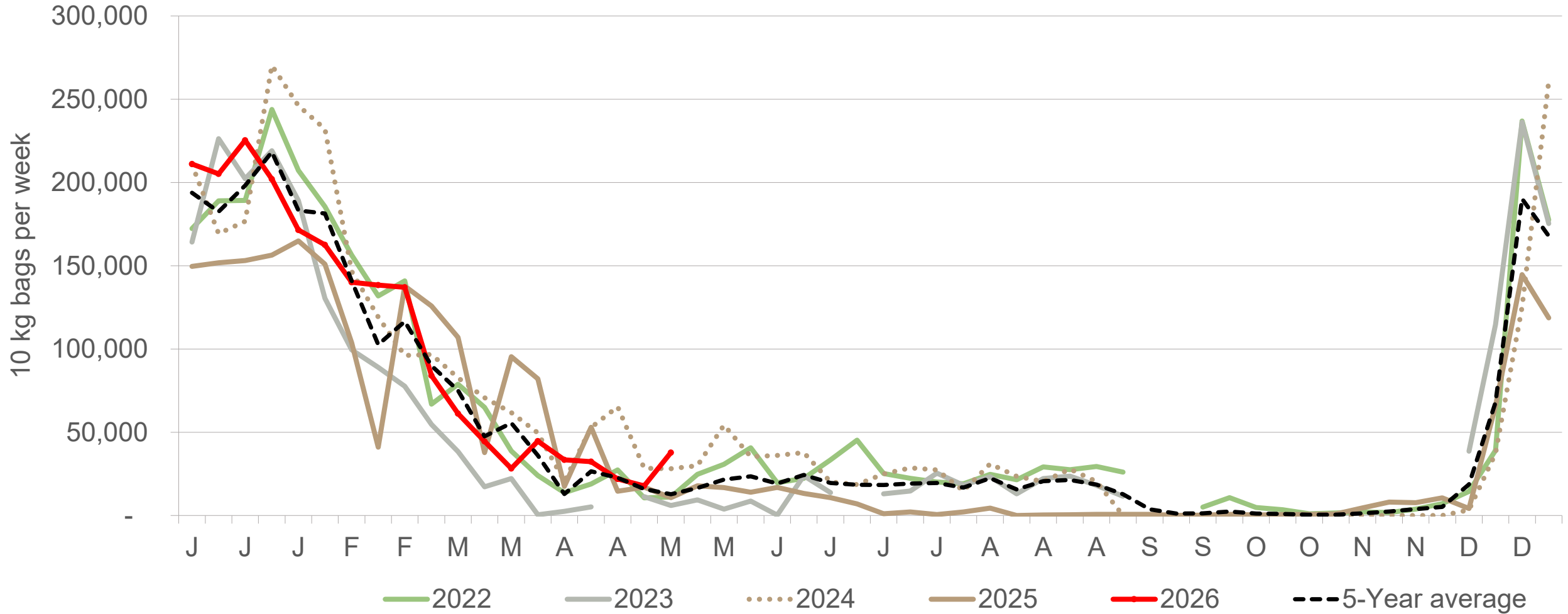
Limpopo: Amount of 10 kg bags per week sold on FPMs (all classes)



Sold 1% bags **more** than the first 19 weeks of 2025 and 344,897 bags **more** than the 5-year average (2021 to 2025) of the first 19 weeks of each year

Data disclaimer: Potatoes SA does not take responsibility for the accuracy or interpretation of company data re-purposed by 3rd parties

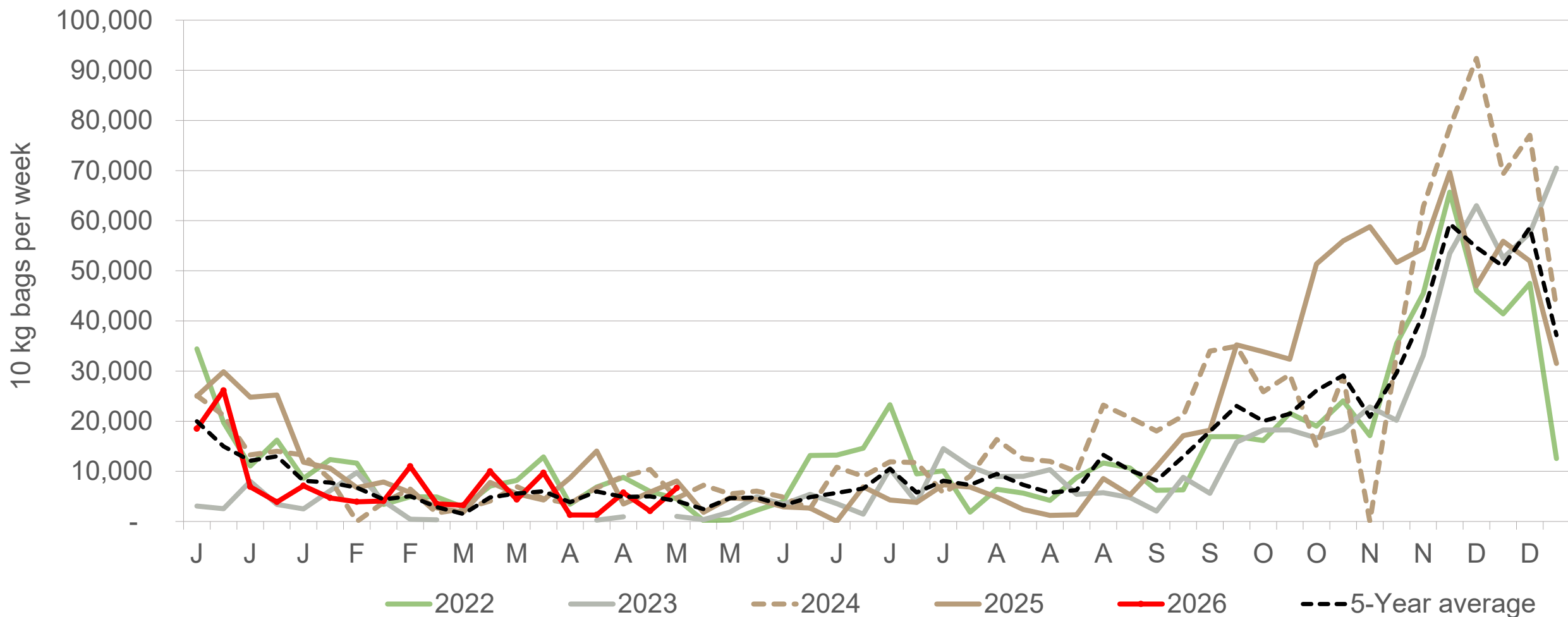
Gauteng: Amount of 10 kg bags per week sold on FPMs (all classes)



Sold 13% bags **more** than the first 19 weeks of 2025 and 86,294 bags **more** than the 5-year average (2021 to 2025) of the first 19 weeks of each year.

Data disclaimer: Potatoes SA does not take responsibility for the accuracy or interpretation of company data re-purposed by 3rd parties

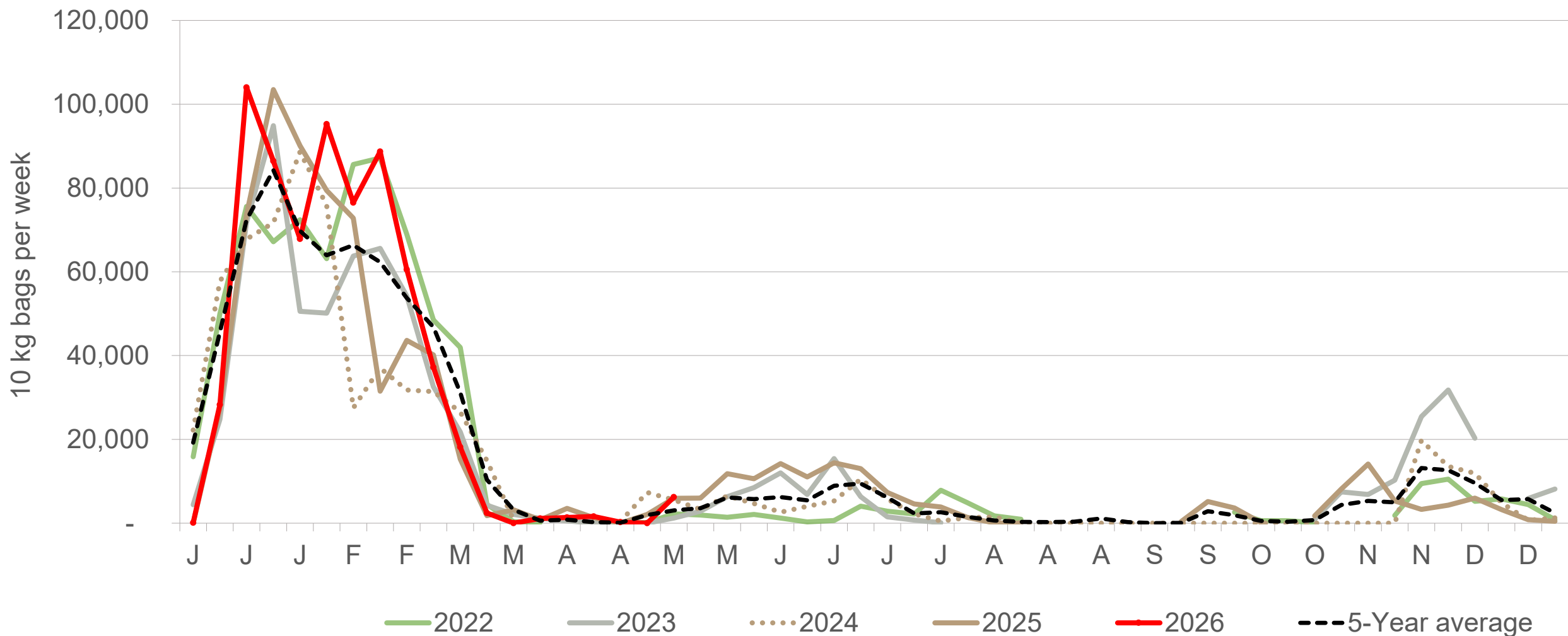
Eastern Cape: Amount of 10 kg bags per week sold on FPMs (all classes)



Sold 36% bags **less** than the first 19 weeks of 2025 and 2,760 bags **less** than the 5-year average (2021 to 2025) of the 19 weeks of each year.

Data disclaimer: Potatoes SA does not take responsibility for the accuracy or interpretation of company data re-purposed by 3rd parties

Mpumalanga: Amount of 10 kg bags per week sold on FPMs (all classes)



Sold 13% bags **more** than the first 19 weeks of 2025 and 40,309 bags **more** than the 5-year average (2021 to 2025) of the 19 weeks of each year.

Data disclaimer: Potatoes SA does not take responsibility for the accuracy or interpretation of company data re-purposed by 3rd parties

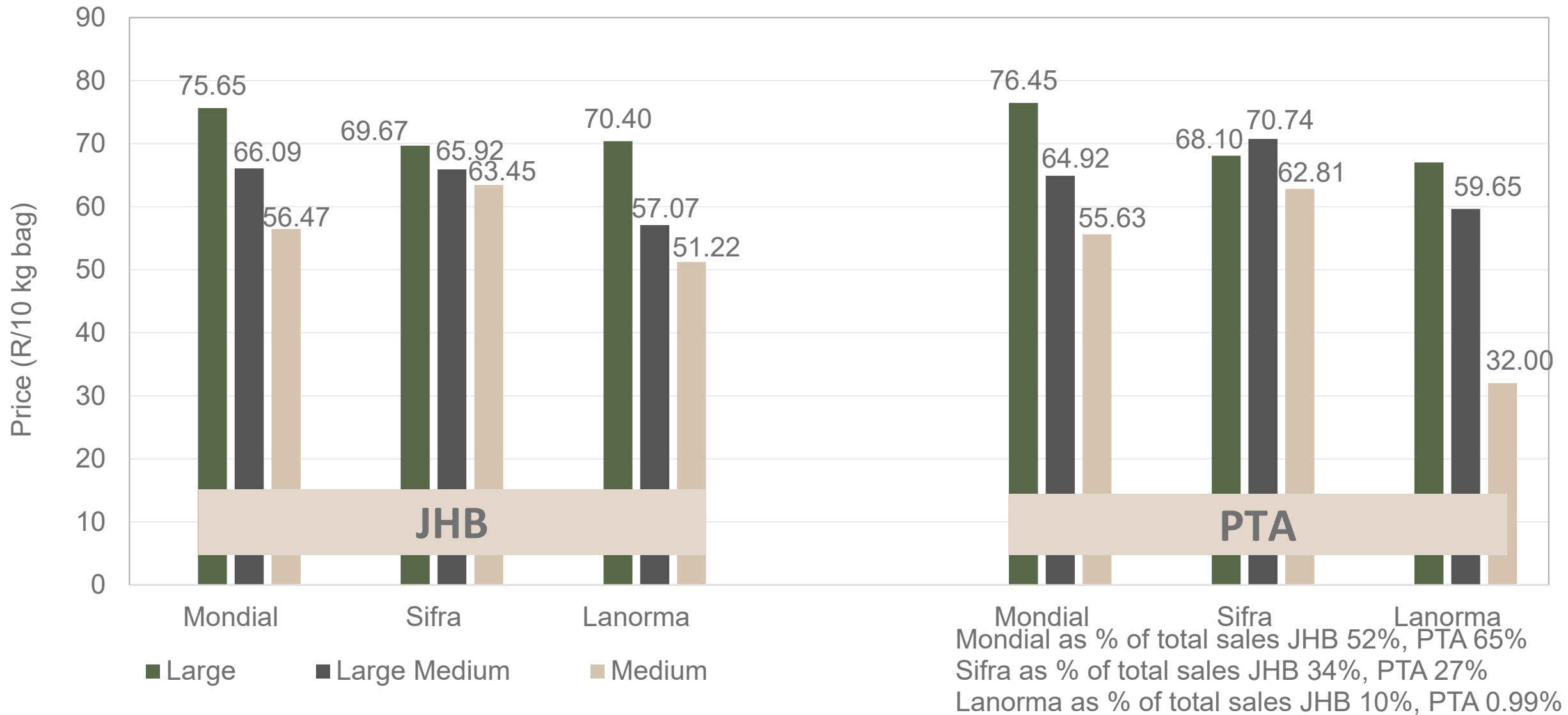
Average weekly prices and volumes for 10 kg bags of potatoes sold on selected markets from selected production regions



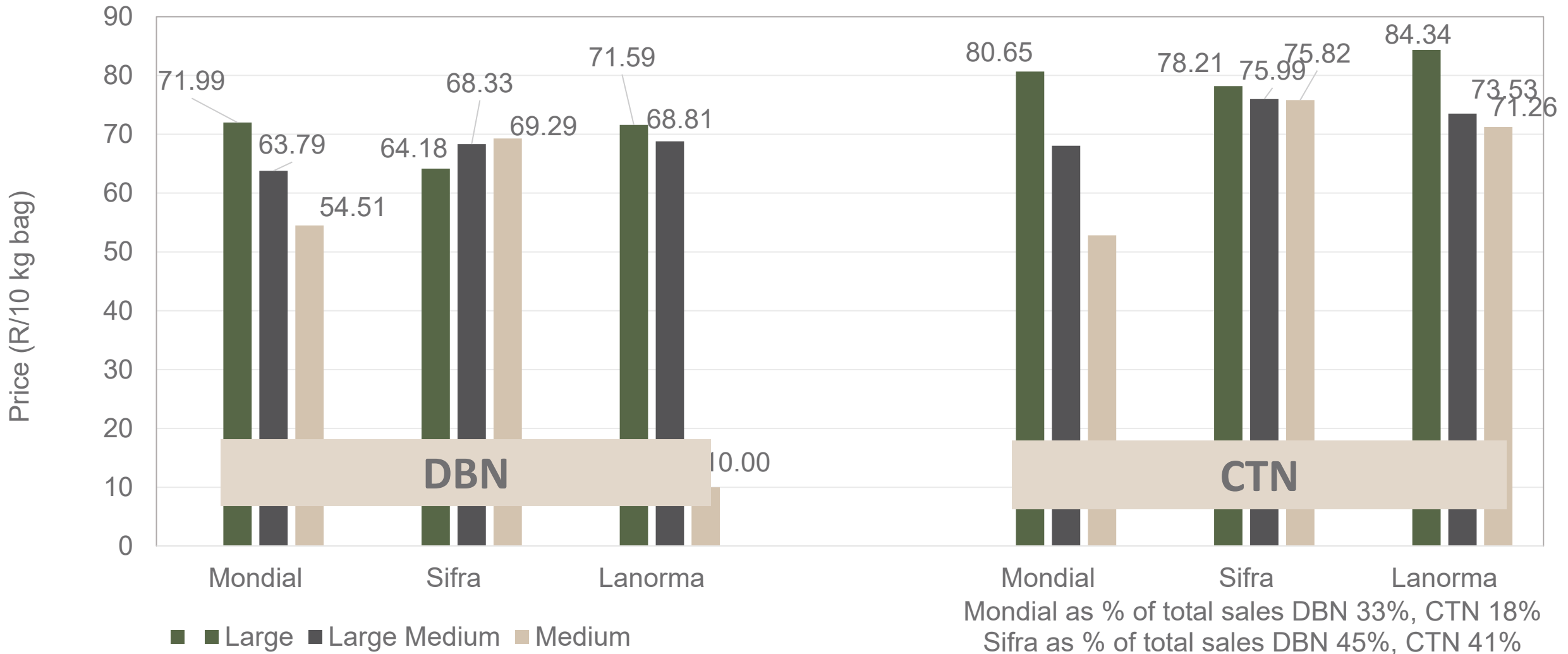
Klas & Grootte	Eastern Free State				Western Free State				North West				Northern Cape				Sandveld		KwaZulu-Natal				All Regions	
	JOH		PRE		JOH		PRE		JOH		PRE		JOH		PRE		CAP		DUR		PIE		All Markets	
	Volume	Prices	Volume	Prices	Volume	Prices	Volume	Prices	Volume	Prices	Volume	Prices	Volume	Prices	Volume	Prices	Volume	Prices	Volume	Prices	Volume	Prices	Volume	Prices
	10kg	R/10kg	10kg	R/10kg	10kg	R/10kg	10kg	R/10kg	10kg	R/10kg	10kg	R/10kg	10kg	R/10kg	10kg	R/10kg	10kg	R/10kg	10kg	R/10kg	10kg	R/10kg	10kg	R/10kg
1L	75 905	75.13	24 251	75.35	37 128	72.60	22 257	75.25	15 257	65.64	8 701	68.50	10 574	68.04	3 452	69.12	3 512	83.55	13 137	65.23	784	58.09	342 739	71.70
1L/M	76 986	64.03	26 367	64.10	71 063	65.57	24 229	69.68	17 272	67.91	12 524	72.03	19 573	55.44	5 555	60.71	11 593	73.81	12 127	60.15	3 345	50.32	458 479	64.10
1M	47 810	55.80	19 150	56.26	62 278	59.80	16 266	60.52	15 651	65.33	10 638	67.79	12 992	53.31	4 752	52.47	16 490	69.08	4 202	47.89	6 379	48.99	384 289	59.63
1S	13 330	32.75	4 732	29.16	8 203	37.33	1 366	34.82	18 468	34.60	4 405	35.58	1 565	27.72	328	25.25	11 875	37.82	770	40.00	2 437	33.07	126 784	34.67
1S/M	15 974	45.41	8 977	44.23	25 540	45.63	5 057	47.60	15 548	47.39	4 305	46.24	3 332	41.49	1 957	34.13	1 446	31.23	759	49.28	480	55.13	145 920	46.35
1XL	1 350	73.06	-	-	-	-	-	-	-	-	-	-	-	-	-	-	-	-	-	-	-	-	2 450	71.69
1XS	2 642	23.04	-	-	8 323	26.07	-	-	9 444	31.70	-	-	219	18.00	-	-	-	-	-	-	-	-	21 957	27.73
1XXS	-	-	-	-	-	-	-	-	-	-	-	-	-	-	-	-	-	-	-	-	-	-	100	60.00
2L	21 003	63.31	15 252	66.50	8 586	60.92	8 677	66.97	4 101	58.09	1 213	60.52	2 407	57.94	446	47.20	3 141	60.07	1 630	56.47	210	46.81	121 212	61.40
2L/M	8 631	57.76	10 324	60.87	9 668	52.97	17 726	59.46	3 457	46.94	751	62.17	6 516	50.57	1 743	46.23	9 840	56.84	3 020	56.76	638	34.22	131 536	53.66
2M	13 648	46.31	11 413	49.17	11 286	46.00	11 918	54.29	5 330	40.19	571	49.07	2 639	46.24	1 391	38.57	11 058	53.75	1 431	42.80	4 976	36.55	137 405	46.44
2S	3 030	29.19	4 332	32.84	2 051	28.63	1 268	21.28	-	-	330	31.67	826	26.66	440	20.03	4 137	24.77	-	-	110	40.00	28 118	27.61
2S/M	4 256	32.22	655	43.02	3 815	37.52	4 082	43.81	810	29.77	208	36.59	440	34.75	788	21.42	315	34.05	363	6.03	-	-	29 069	34.11
2XL	-	-	-	-	-	-	-	-	-	-	-	-	-	-	-	-	-	-	-	-	-	-	110	60.00
2XS	-	-	-	-	-	-	-	-	-	-	-	-	-	-	-	-	-	-	-	-	-	-	2 373	13.68
2XXS	-	-	-	-	-	-	-	-	-	-	-	-	-	-	-	-	-	-	-	-	-	-	-	-
3L	6 318	59.43	15 777	54.84	1 540	42.76	2 021	48.38	148	17.83	-	-	4 530	46.20	531	46.59	690	38.78	-	-	-	-	44 342	50.74
3L/M	10 217	43.38	2 798	49.38	8 247	43.01	3 484	47.85	3 740	43.97	1 776	45.89	780	37.76	130	35.38	-	-	-	-	183	31.27	64 237	44.45
3M	9 246	39.08	4 946	39.46	8 674	36.07	5 584	36.57	3 791	39.38	1 613	45.11	4 769	34.27	456	31.25	2 498	28.57	110	30.00	-	-	80 272	36.21
3S/M	1 114	31.42	1 760	36.44	-	-	80	15.06	440	25.00	235	26.51	35	5.00	90	7.00	-	-	-	-	-	-	7 420	30.12
3XS	-	-	-	-	-	-	-	-	-	-	-	-	-	-	-	-	-	-	-	-	-	-	-	-
3XXS	-	-	-	-	-	-	-	-	-	-	-	-	-	-	-	-	-	-	-	-	-	-	-	-
4L	-	-	3 902	43.24	-	-	-	-	-	-	-	-	-	-	-	-	138	30.00	-	-	-	-	4 260	42.55
4L/M	-	-	1 430	45.42	-	-	-	-	-	-	-	-	-	-	-	-	-	-	-	-	-	-	5 181	32.91
4M	-	-	1 033	31.08	-	-	103	29.42	-	-	-	-	-	-	11	9.00	754	20.55	-	-	110	35.00	4 739	31.22
4S	-	-	-	-	-	-	-	-	-	-	-	-	-	-	-	-	-	-	-	-	-	-	-	-
4S/M	-	-	190	25.00	-	-	-	-	-	-	-	-	-	-	-	-	-	-	-	-	-	-	190	25.00
Total	311 570	59.46	157 838	57.33	266 402	57.27	125 022	60.89	113 457	51.46	49 215	60.61	71 253	52.13	22 070	51.00	92 797	50.09	39 537	56.36	21 622	42.44	2 183 411	55.52

Data disclaimer: Potatoes SA does not take responsibility for the accuracy or interpretation of company data re-purposed by 3rd parties

PTA & JHB markets: Average Prices - Different Sizes (only 10 kg bags)



DBN & CTN markets: Average Prices - Different Sizes (only 10 kg bags)




Mondial as % of total sales DBN 33%, CTN 18%
 Sifra as % of total sales DBN 45%, CTN 41%
 Lanorma as % of total sales DBN 1.95%, CTN 32%

Thank you for your time


Feel free to contact us

 Lebo@potatoes.co.za

Jodie@potatoes.co.za

 +27 (0)12 349 1906

 6 De Havilland Crescent
Persequor Techno Park
Persequor Park
Pretoria

 www.potatoes.co.za



Potatoes
Aartappels SA